

IF IT IS FOUND DESIRABLE TO CHANGE ANY TOLERANCE OR OTHER DETAIL SPECIFIED ON THIS DRAWING NOTIFY THE PURCHASER PROMPTLY.		DIMENSIONS IN INCHES UNLESS OTHERWISE SPECIFIED					
MAXIMUM ALLOWABLE TOLERANCES HAVE BEEN DETERMINED AND DEVIATIONS WILL BE CAUSE FOR REJECTION. REMOVE ALL BURRS AND SHARP EDGES.							
ISSUE	ITEM	CHANGED FROM	DATE	CH. NO.	DRAFTS	CHECKER	ENG. APP.
X		ENG RELEASE	7 JULY 1970		SS		
XI		REVISED	MAY 18 1971		FR		

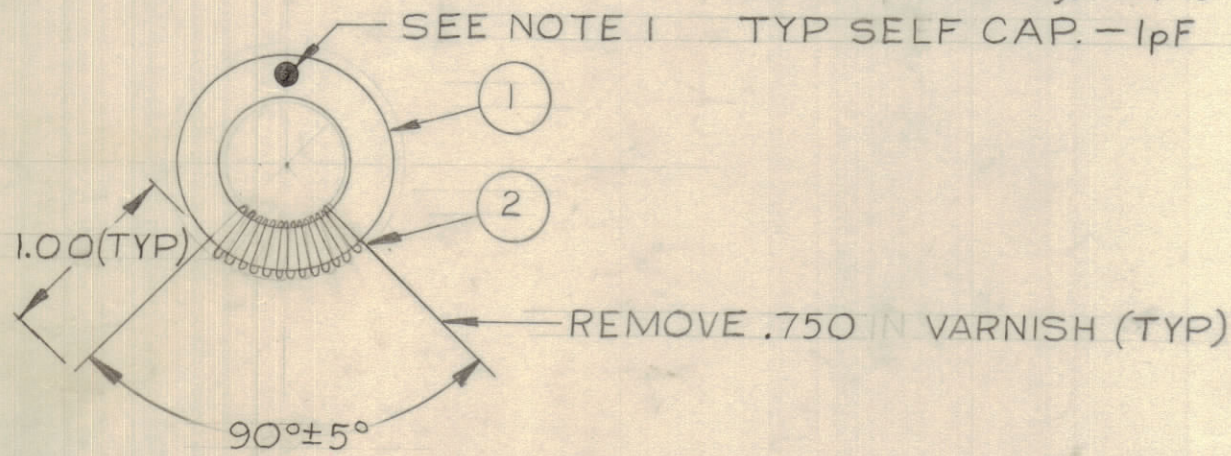
REQ.	ITEM	PART NO.	DESCRIPTION	SYMBOL
	1	CI10012-T68-2	CORE, THOROID	
	2	WI123-24	WIRE, MAGNET	
	3	GL104-2	INSULATING VARNISH	
	4	WI122-30	WIRE, MAGNET	

**TEST SPECIFICATION:**

RESONATE WITH THE STANDARD 100pF CAPACITOR, & 56pF SET ON Cp DIAL AT 8MHz USING AN "RX" METER & A COUNTER.

**CL10050-1**

NO. OF TURNS 14.5 (REF)  
WIRE-ITEM 2 AS REQ'D  
INDUCTANCE 2.39μH±1%  
TYP SELF CAP. - 1pF



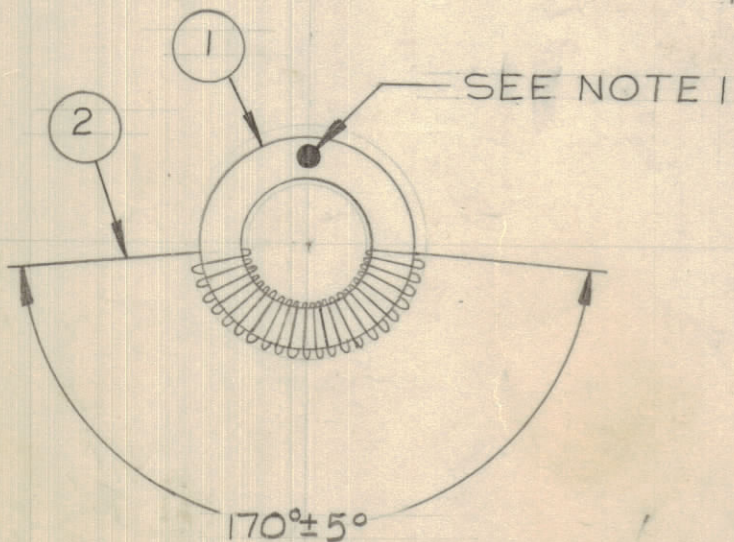
SEE NOTE 4 FOR DIPPING

**TEST SPECIFICATION:**

RESONATE WITH A 103pF (ZERO METER AT +10pF) ABOUT +10pF) CAPACITOR AT 8MHz USING AN "RX" METER & A COUNTER.

**CL10050-2**

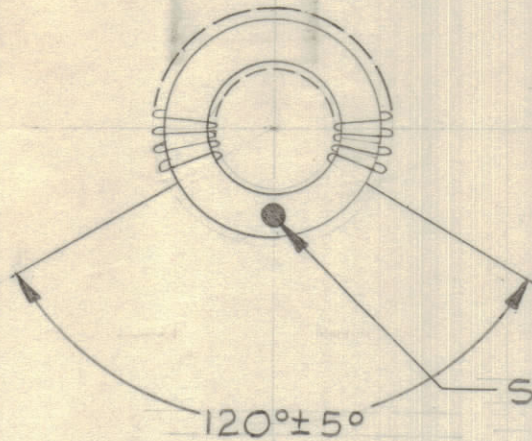
NO. OF TURNS 22.5 (REF)  
WIRE-ITEM 2 AS REQ'D  
INDUCTANCE 3.74μH±1%  
TYP SELF CAP. - 1pF



SEE NOTE 4 FOR DIPPING

**TEST SPECIFICATION**

RESONATE WITH A 75.5pF CAPACITOR AT 8MHz, USING AN "RX" METER & A COUNTER.



**CL10050-3**

NO. OF TURNS -27.5 (REF)  
WIRE-ITEM 2 AS REQ'D  
INDUCTANCE 5.0μH±1%  
TYP SELF CAP. - 1pF

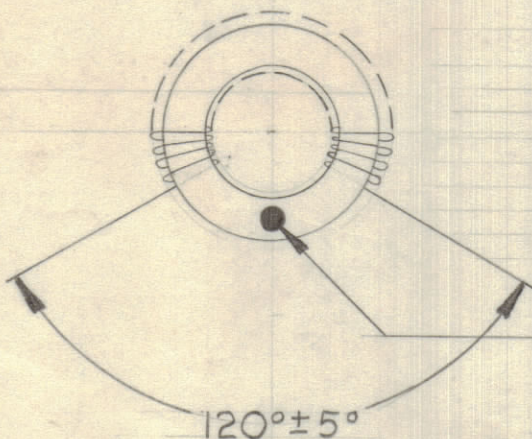
SEE NOTE 1  
SEE NOTE 4 FOR DIPPING

**PRE-VARNISH TEST SPECIFICATION**

RESONATE WITH THE STANDARD 1950pF CAPACITOR AT 1.425MHz USING AN "RX" METER & A COUNTER.

**FINAL TEST**

RESONATE WITH A SELECTED 1650pF CAPACITOR AT 1.56MHz ±1KHz USING AN "RX" METER & A COUNTER



**CL10050-4**

NO. OF TURNS -32 (REF)  
WIRE-ITEM 2 AS REQ'D  
INDUCTANCE 6.35μH±1%  
TYP SELF CAP - 1pF

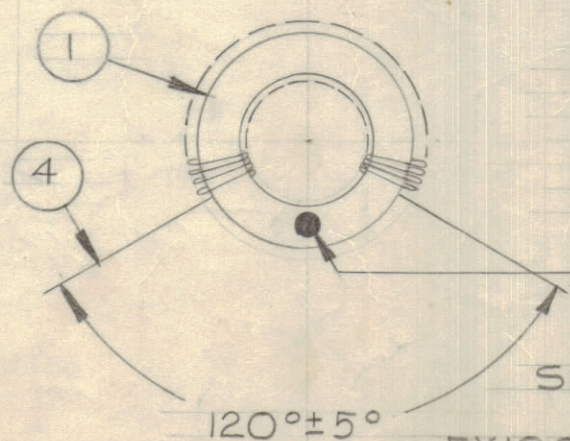
SEE NOTE 1  
SEE NOTE 4 FOR DIPPING

**PRE-VARNISH TEST SPECIFICATION**

RESONATE WITH THE STANDARD 1300pF CAPACITOR & +14 pF SET ON Cp DIAL AT 975KHz WITH AN "RX" METER & A COUNTER.

**FINAL TEST**

RESONATE WITH A SELECTED 1300pF CAPACITOR & +14 pF SET ON Cp DIAL AT 975KHz ±1KHz WITH AN "RX" METER & A COUNTER.



**CL10050-5**

NO. OF TURNS 56 (REF)  
WIRE-ITEM 4 AS REQ'D  
INDUCTANCE 19.45μH±1%  
TYP SELF CAP. - 2pF

SEE NOTE 1  
SEE NOTE 4 FOR DIPPING

- CL10050 XI
- USE "RX" METER & A COUNTER FOR MEASUREMENTS DURING TEST. USE COUNTER TO DETERMINE FREQUENCY.
  - FINAL TEST TO VALUES STATED & APPLY TOLERANCE AS FOLLOWS
    - CL10050-1 ±1pF
    - CL10050-2 ±.5pF
    - CL10050-3 ±.5pF
    - CL10050-4 ±.5pF
    - CL10050-5 ±.5pF
  - AFTER ADJUSTING, DIP IN INSULATING VARNISH (ITEM 3) BAKE FOR ONE HOUR AT 125°C THEN COOL FOR ONE HOUR AT -20°C.
  - TEST & ADJUST AS PER SPECIFICATION
  - WIND COIL WITH TURNS EVENLY SPACED OVER INDICATED LENGTH.
  - MARK COIL WITH .125 DIA. COLOURED DOT-POSITION SHOWN - CL10050-1 BROWN; CL10050-2 RED; CL10050-3 ORANGE; CL10050-4 YELLOW; CL10050-5 GREEN
- NOTES:

STOCK SIZE		TMC (Canada) LIMITED OTTAWA ONTARIO	
MATERIAL		COIL, RF	
TYPE & TEMPER		LTS	
HEAT TREAT. SPEC.		CHECKED	FINAL APPROVAL
FINISH & SPEC. NO.		CL10050 XI	

TOLERANCES		SCALE: NTS
ALL OTHERS	DEC. DIM. ± .06 FRAC. DIM. ± 1/64 ANGULAR DIM. ± 0° 30'	DRILL, PUNCH, COMMERCIAL STOCK SIZES AND MANUFACTURERS TOLERANCES ARE NOT INCLUDED.

FX10035	TE 4 FOR DIPPING	7 JULY 1970
FX10034		
MODEL	PROJECT NO.	ASS'Y. NO.
		DATE
USED ON		