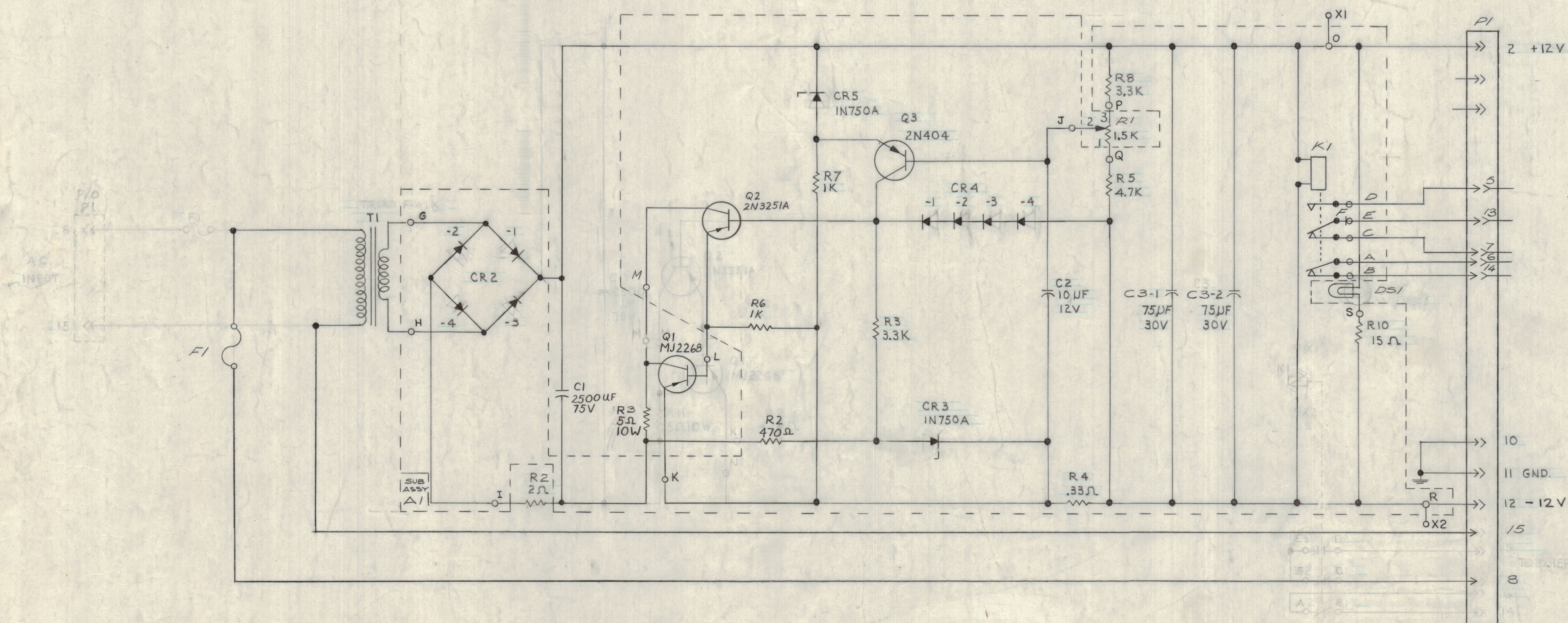


REVISIONS							
ZONE	LTR	DESCRIPTION	DATE	E.M.N.NO	DRAFT	CHKD	APPD
	A	GENERAL REVISIONS	11-15-67		ROG	JFP	
	B	Q1 WAS 2N297A, CR4-4 ADDED	12-5-67		ROG	JFP	
	C	REDRAWN COMPLETELY, FORMER MULTRONICS NO. D237302G	12-6-67		EAI	JFP	JFP
	D	GENERAL REVISIONS	2-19-68		C.B.	JFP	JFP
	Ø	REDRAW 40E12D7011	6-5-68		C. GARDNER	JFP	
	A	ADDED P/O PI	1-23-69		MT		
	B	NOTES ADDED & UPDATED	3/12/69		SE		



- ~NOTES~
- ALL REF SYMBOLS INSIDE DOTTED LINE P/O PC SUBASSEMBLY AND ARE PREFIXED BY A1
  - ALL REF SYMBOLS PREFIXED BY THE FOLLOWING
 

LEFT SUPPLY	1A27A1
RIGHT "	1A27A2
  - SCHEMATIC TYPICAL FOR BOTH SUPPLIES
  - CR2 DIODES IN 5198, CR4 DIODES IN 4245

	SPT-3KVHF	API38
QTY / UNIT	MODEL USED ON	ASSY NO.
APPLICATION		
CODE		
NOTICE TO PERSONS RECEIVING THIS DRAWING		
THE TECHNICAL MATERIEL CORPORATION claims proprietary right in the material disclosed hereon. This drawing is issued in confidence for engineering information only and may not be reproduced or used to manufacture anything shown hereon without permission from THE TECHNICAL MATERIEL CORPORATION to the user. This drawing is loaned for mutual assistance and is subject to recall at any time.		

QTY. REQ.	ITEM	PART NO.	DESCRIPTION	SYMBOL
LIST OF MATERIAL				
THE TECHNICAL MATERIEL CORP. MAMARONECK, NEW YORK				
SCHEMATIC DIAGRAM POWER SUPPLY. AP 138				
SIZE	CODE IDENT. NO.	DWG NO.	ISSUE	
D	82679	CK8108	B	
SCALE			SHEET	OF