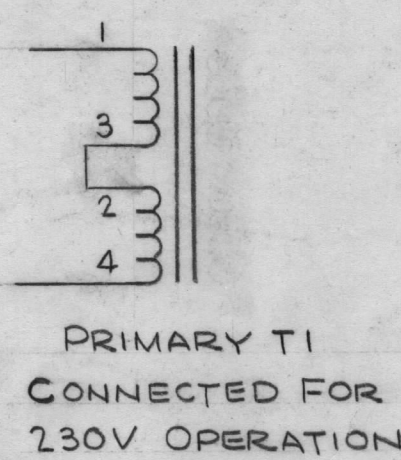
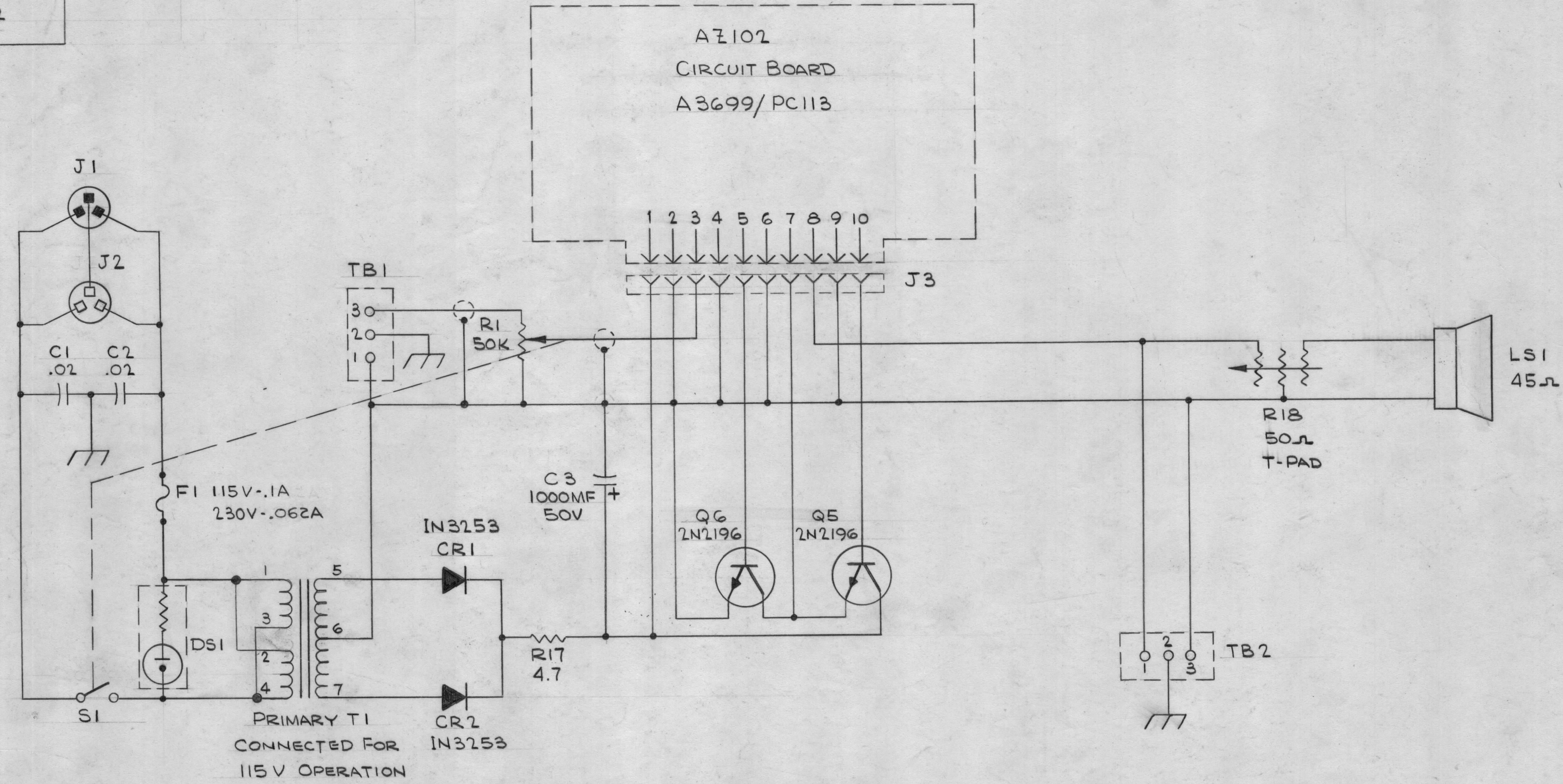


LAST SYMBOL
C3
CR2
DS1
F1
J3
LS1
Q6
R18
S1
TB2

MISSING SYMBOLS*
C4 THRU C10
CR3 THRU CR6
Q1 THRU Q4
R2 THRU R16

* - SYMBOLS LOCATED ON A7102
CIRCUIT BOARD. (SEE CK751)

REVISIONS						
ZONE	SYM	DESCRIPTION	DATE	E.M.N. NO.	DRAFT	APPD
	X	EXPERIMENTAL RELEASE	2-3-65		HLA	
	X1	ADD. JUMPER BETWEEN J1 & J2; REV. XFMR WIRING; REV. PADS	4-15-65		HLA	
	Ø	ORIGINAL RELEASE FOR PRODUCTION	4/19/65		HLA	
D6	A	SYM. F1 230V/.062A. WAS 230V/.2A.	5-3-65	14004	Alan	<i>[Signature]</i>
D6	B	F1 WAS 115V-.1A, 230V-.062A	4/27/66	15646	JL	<i>[Signature]</i>
	C	F1 .1A WAS .062A, .062A WAS .032A	3-16-66	15963	LRL	<i>[Signature]</i>



- UNLESS OTHERWISE SPECIFIED
- 1- ALL RESISTOR VALUES ARE IN OHMS
 - 2- ALL CAPACITORS ARE IN MICROFARAD
 - 3- --- DENOTES CHASSIS GROUND
 - 4- --- DENOTES COMMON GROUND

NOTES

H3S-7		
Q'TY./UNIT	MODEL USED ON	ASS'Y. NO.
SCALE	CODE	
THE CONTENTS OF THIS DRAWING ARE THE EXCLUSIVE PROPERTY OF THE TECHNICAL MATERIEL CORP. ITS UNAUTHORIZED USE OR REPRODUCTION IN WHOLE OR IN PART IS STRICTLY FORBIDDEN.		

REQ'D.	ITEM	PART NUMBER	DESCRIPTION	SYMBOL
LIST OF MATERIAL				
MATERIAL		THE TECHNICAL MATERIEL CORP. MAMARONECK, NEW YORK		
FINISH		TITLE DIAGRAM, SCHEMATIC SPEAKER		
UNLESS OTHERWISE SPECIFIED DIMENSIONS ARE IN INCHES AND INCLUDE CHEMICALLY APPLIED OR PLATED FINISHES		DRAWN H. AUSTIN	DATE 2-3-65	FINAL APPROVAL <i>[Signature]</i>
DECIMALS .X ± .05 .XX ± .01 .XXX ± .005		CHECKED <i>[Signature]</i>	DATE 4/19/65	DATE 4/20/65
TOLERANCES		ELECT. DES. <i>[Signature]</i>	DATE	CK 899
FRACTIONS ± 1/64 ANGLES ± 0° 30'		MECH. DES.	DATE	C
				REV. LTR.

CK899
C