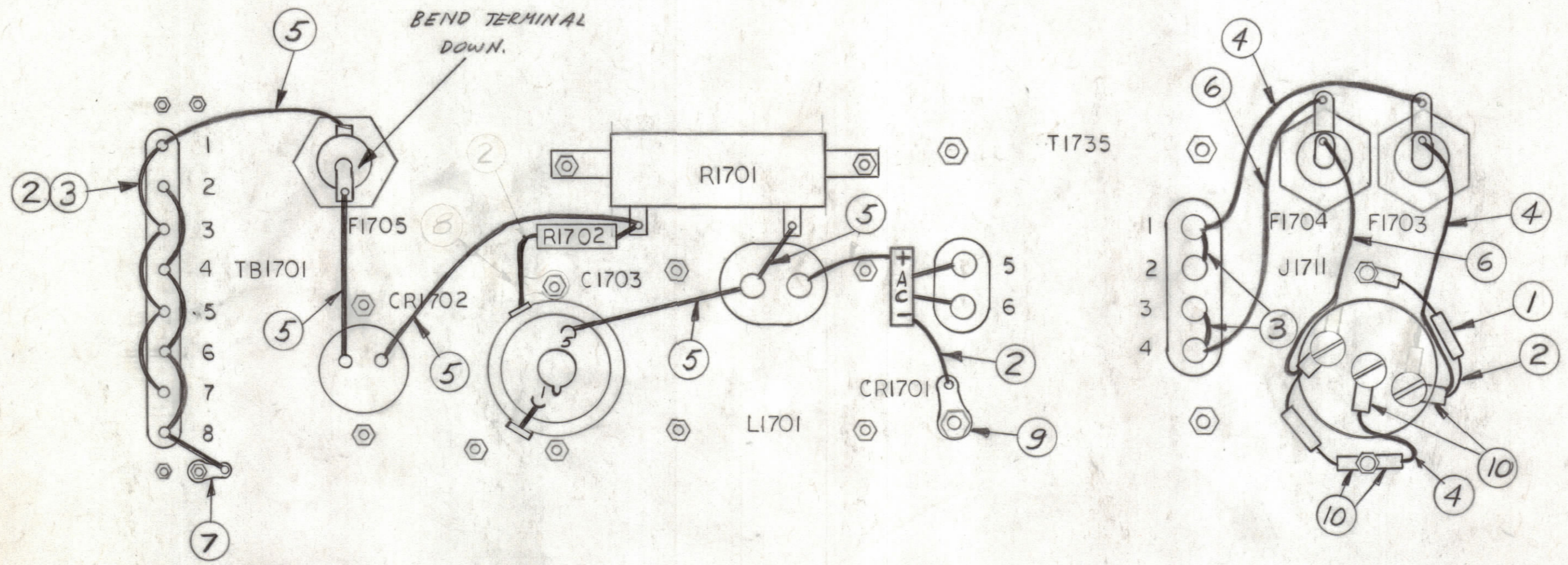


REVISIONS						
ZONE	LTR	DESCRIPTION	DATE	E.M.N.NO	DRAFT	CHKD APPD



QTY. REQ.	ITEM	PART NO.	DESCRIPTION	SYMBOL
6	10	TE156-32947	TERM. LUG, INS.	
1	9	TE104-3	TERM. LOCKING	
1	8	TE104-2	TERM. LOCKING	
1	7	TE104-1	TERM. LOCKING	
	6	MWC20(7)U9	WIRE, ELEC, INS.	
	5	MWC20(7)U2	WIRE, ELEC, INS.	
	4	MWC20(7)U0	WIRE, ELEC, INS.	
X	3	WL100-6	WIRE, BUSS	
X	2	PX100-1-034	INS SLUG	
2	1	CC100-16	CAP. DISC	E1786

LIST OF MATERIAL					
FINAL APPROVAL	DATE	THE TECHNICAL MATERIEL CORP. MAMARONECK, NEW YORK WIRING DIAGRAM AX8009 28VDC P.S. (17)			
MECH. DES.	DATE				
ELECT. DES.	DATE				
CHECKED	DATE				
DRAWN	DATE	SIZE	CODE IDENT. NO.	DWG NO.	ISSUE
		C	82679	CK8029	1
MATERIAL		SCALE	SHEET		OF
FINISH					

1	AX8009	
QTY / UNIT	MODEL USED ON	ASS'Y NO.
APPLICATION		
	CODE	
<small>NOTICE TO PERSONS RECEIVING THIS DRAWING</small> <small>THE TECHNICAL MATERIEL CORPORATION claims proprietary right in the material disclosed herein. This drawing is issued in confidence for engineering information only and may not be reproduced or used to manufacture anything shown hereon without permission from THE TECHNICAL MATERIEL CORPORATION to the user. This drawing is loaned for mutual assistance and is subject to recall at any time.</small>		

UNLESS OTHERWISE SPECIFIED DIMENSIONS ARE IN INCHES AND INCLUDE CHEMICALLY APPLIED OR PLATED FINISHES

TOLERANCES ON
DECIMALS .X ± .05
.XX ± .01
.XXX ± .005
FRACTIONS ± 1/64
ANGLES ± 0° -30'

CK8029