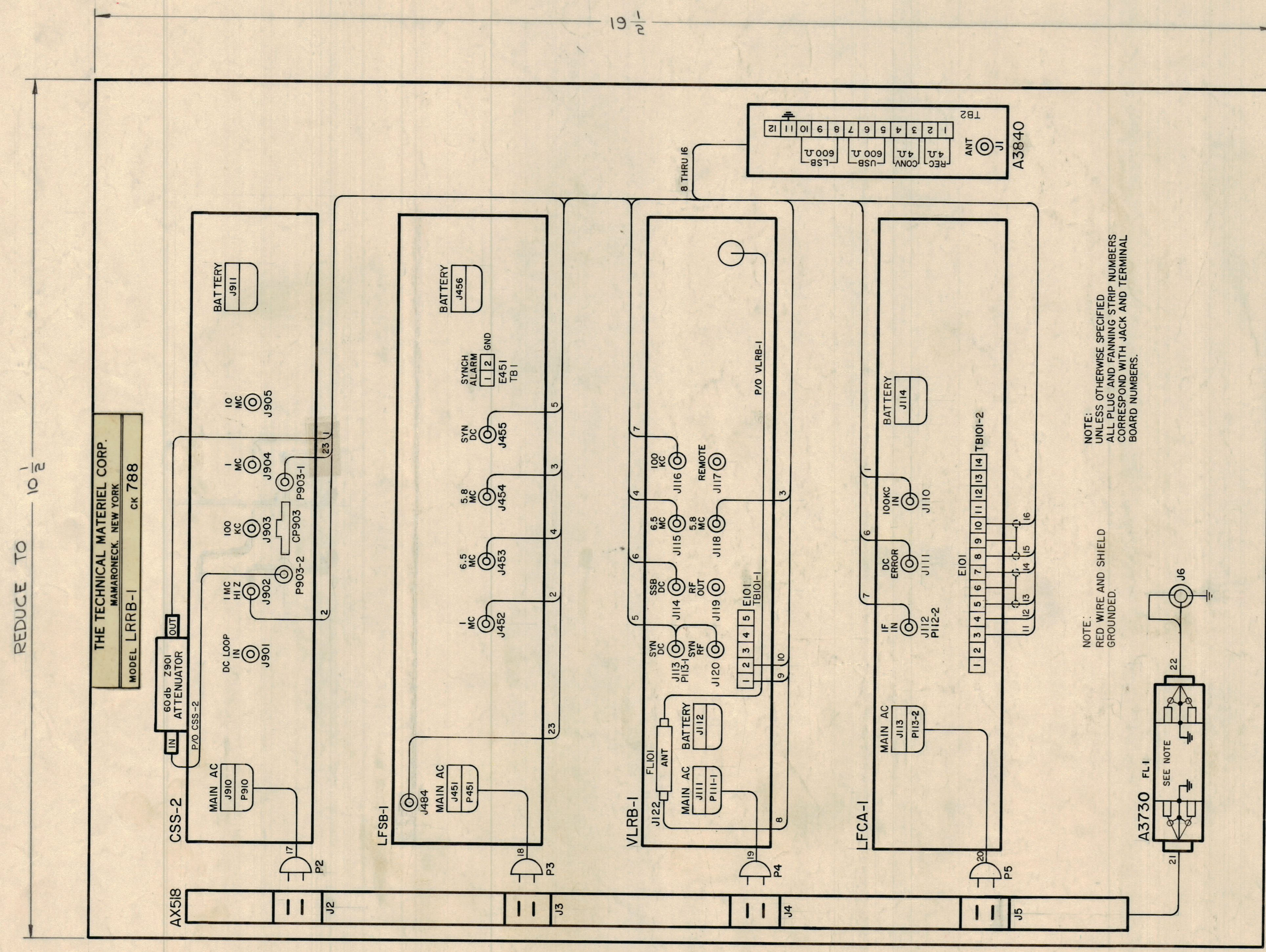
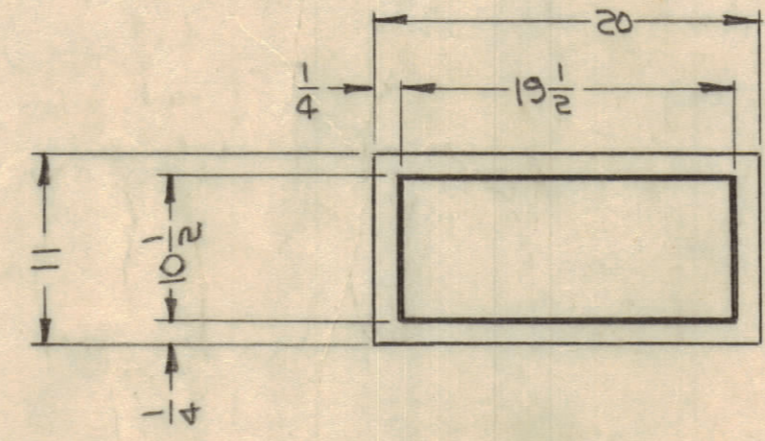


REVISIONS						
ZONE	SYM	DESCRIPTION	DATE	E.M.N. NO.	DRAFT	CHKD
X	X	EXPERIMENTAL RELEASE	9-16-64	X		
X	X	TB NO. ADDED, NOTE ADDED, FL NO. ADDED, P. NO. ADDED	10-19-64	X		
P	P	ORIGINAL RELEASE FOR PRODUCTION	10-20-64			
D9	A	ON CSS-2, LINE 23 FR. 1903 TO LINE 2 ADD. PICT. REVISED TO INCLUDE	12-7-64	13071		
C9		"CP903", "P903-1", "P903-2", ON LF3B-1, "J484" ADDED.				



REDUCE TO 10 1/2

THE TECHNICAL MATERIEL CORP.
MAMARONECK, NEW YORK
MODEL LRRB-1 ck 788



NOTES

LRRB-1		ASSY. NO.
QTY./UNIT	MODEL USED ON	
SCALE	CODE	
	A	

THE CONTENTS OF THIS DRAWING ARE THE EXCLUSIVE PROPERTY OF THE TECHNICAL MATERIEL CORP. ITS UNAUTHORIZED USE OR REPRODUCTION IN WHOLE OR IN PART IS STRICTLY FORBIDDEN.

REQ'D.	ITEM	PART NUMBER	DESCRIPTION	SYMBOL
M. STURMER LIST OF MATERIAL				
MATERIAL		THE TECHNICAL MATERIEL CORP. MAMARONECK, NEW YORK		
FINISH		TITLE DIAGRAM, WIRING		
UNLESS OTHERWISE SPECIFIED DIMENSIONS ARE IN INCHES AND INCLUDE CHEMICALLY APPLIED OR PLATED FINISHES		DRAWN	DATE	FINAL APPROVAL
DECIMALS		XX ± .01	10-19-64	
FRACTIONS		± 1/64		
TOLERANCES		± 0° 30'		
ELECT. DES.		CK788		A
MECH. DES.		DATE		REV. LTR.
SHEET		1		STOCK NO. 4404

CK788 A