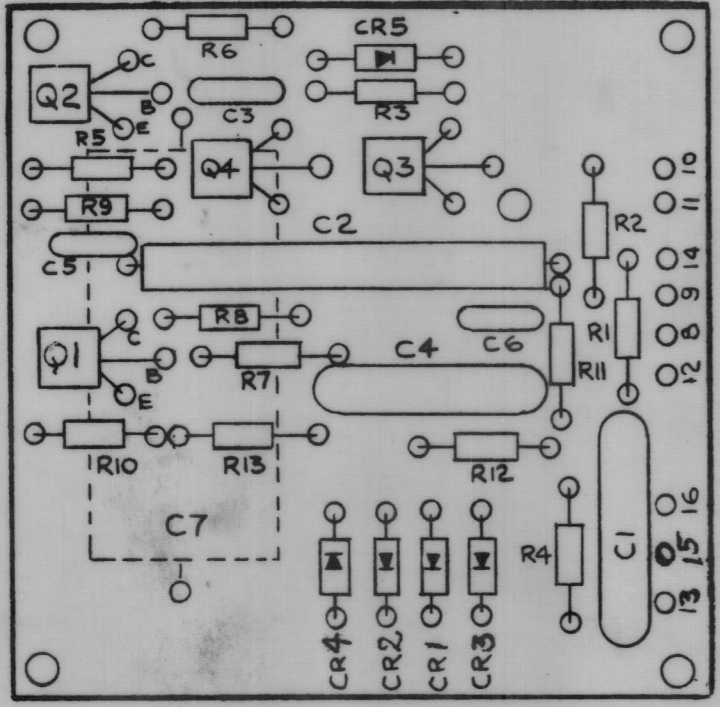
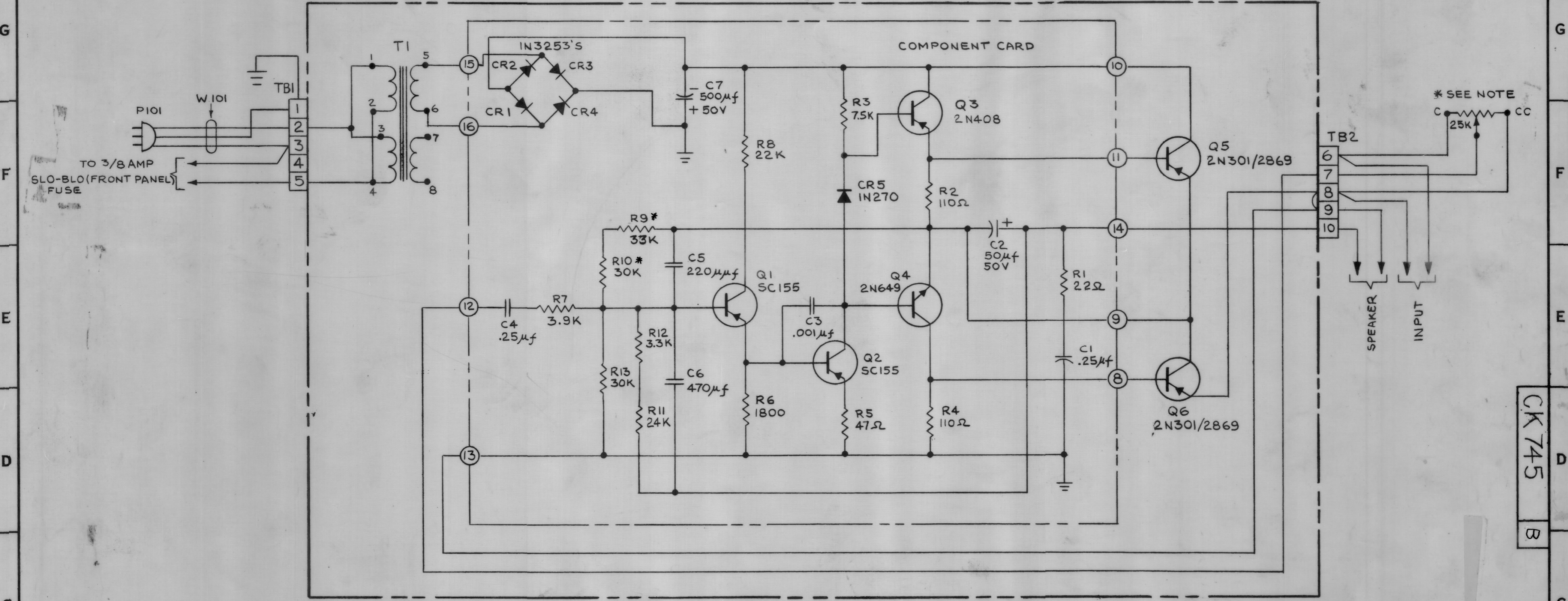


REVISIONS					
ZONE	SYM	DESCRIPTION	DATE	E.M.N. NO.	DRAFT
	0	ORIGINAL RELEASE FOR PRODUCTION	5/18/64	0	A.M.
	A	W101 WAS CA101, TBI WAS T1, TB2 WAS T2	7.28.64	11599	W.B.
	B	* ADDED TO R9, R10. NOTE ADDED	8-17-65	14599	H.V.V.

AZ-104



COMPONENT CARD LAYOUT

*NOTE: TOTAL RESISTANCE OF R9 & R10 SELECTED AT FACTORY FOR 1/2 SUPPLY VOLTAGE ACROSS Q6 (COLLECTOR TO EMITTER).

* NOTE: SEE BSP SCHEMATIC FOR REF SYMBOL ALL RESISTORS ARE ± 5%

NOTES

BSP1A,2A,3A	
QTY./UNIT	MODEL USED ON
SCALE	ASS'Y. NO.
	CODE
	A

REQ'D.	ITEM	PART NUMBER	DESCRIPTION	SYMBOL
HAY LIST OF MATERIAL				
MATERIAL				
FINISH				
THE TECHNICAL MATERIEL CORP. MAMARONECK, NEW YORK				
TITLE				
SCHEMATIC DIAGRAM & COMPONENT CARD LAYOUT (AZ104)				
DRAWN	W.B.	DATE	5-16-64	FINAL APPROVAL
CHECKED	W.B.	DATE	5-18-64	
ELECT. DES.	H.V.V.	DATE	5-19-64	
MECH. DES.		DATE		
CK 745				B
SHEET				REV. LTR.

THE CONTENTS OF THIS DRAWING ARE THE EXCLUSIVE PROPERTY OF THE TECHNICAL MATERIEL CORP. ITS UNAUTHORIZED USE OR REPRODUCTION IN WHOLE OR IN PART IS STRICTLY FORBIDDEN.

CK 745
B