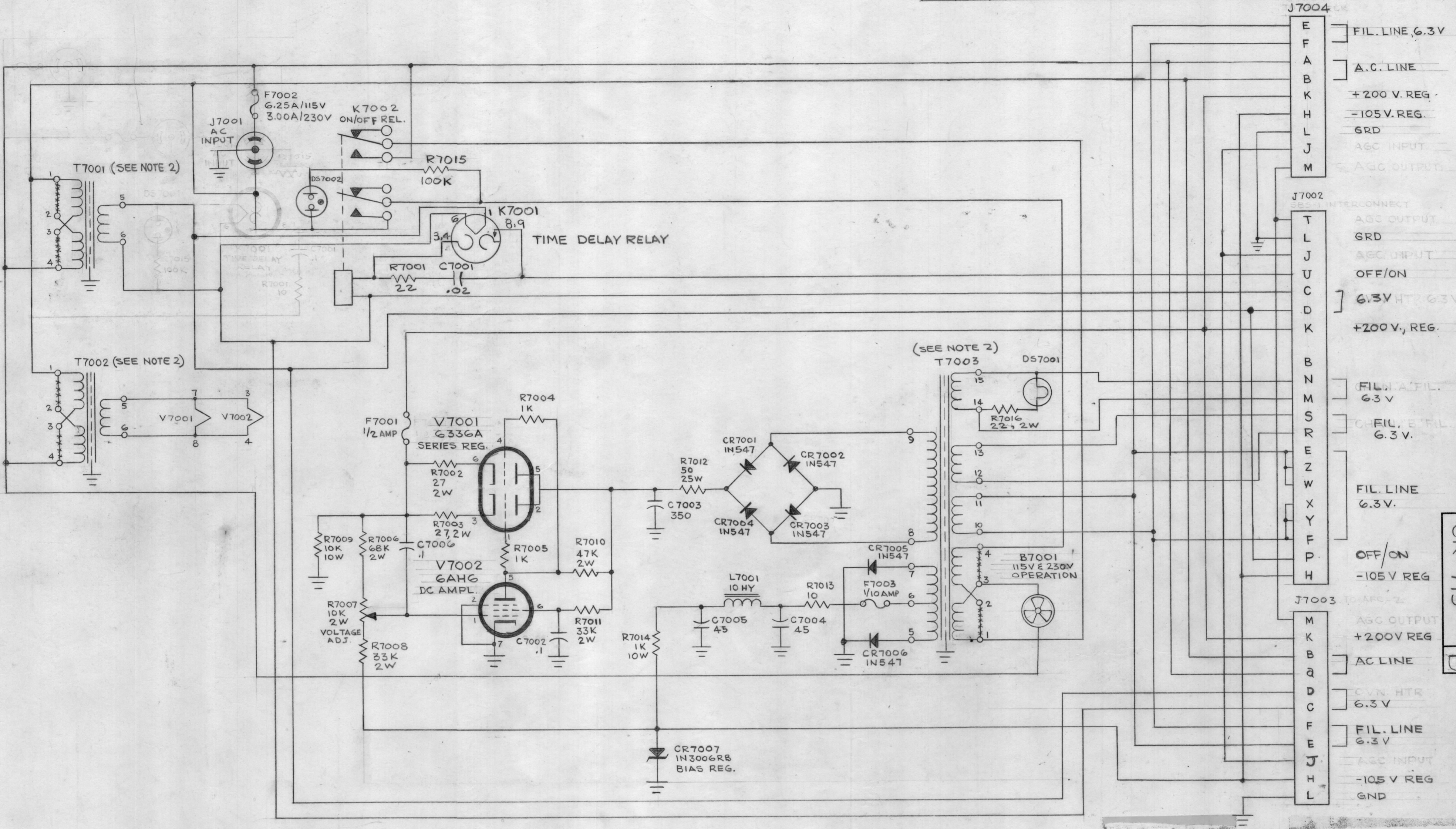
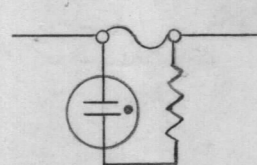


REVISIONS										REVISIONS					
ZONE	SYM	DESCRIPTION	DATE	E.M.N. NO.	DRAFT	CHKD	APPD	ZONE	SYM	DESCRIPTION	DATE	E.M.N. NO.	DRAFT	CHKD	APPD
A		K7001, R7001, C7001, RELOCATED, C7001 F.R. WAS #1	5/20/65	1412	E	JTB		X		EXPERIMENTAL RELEASE	3/20/64		JTB		
B		CONN. ADDED BET PINS 2 & 3 ON J7002, OFF. PINS ADDED TO P	8-4-65	14615	E	JTB	MMK	AG	X1	#3 NOTE WITH CHART & DIAGRAM ADDED	7/10/64	#	JTB	@	JTB
										ORIGINAL RELEASE FOR PRODUCTION	8-18-64	#	SEG		



- NOTES:
- UNLESS OTHERWISE SPECIFIED, RESISTORS ARE IN OHMS, 1/2 WATT, CAPACITORS ARE IN MICRO-FARADS.
  - FOR 230V OPERATION, REMOVE JUMPERS BETWEEN PINS 1 & 2, 3 & 4 OF T7001, T7002 & T7003. CONNECT JUMPERS BETWEEN PINS 2 & 3 OF T7001, T7002 & T7003.
  - ALL FUSEHOLDERS ARE INDICATOR TYPE AS SHOWN BELOW. SYMBOLS ARE AS FOLLOWS:



FOR FUSE	LAMP	RES.
F7001	DS7003	R7017
F7002	DS7004	R7018
F7003	DS7005	R7019

LAST SYMBOLS	MISSING SYM.
B7001	
C7006	
CR7007	
DS7005	
F7003	
J7004	
K7002	
L7001	
R7019	
T7003	
V7002	

NOTES

MFP-1		
QTY./UNIT	MODEL USED ON	ASS'Y. NO.
SCALE	CODE	
	A	
THE CONTENTS OF THIS DRAWING ARE THE EXCLUSIVE PROPERTY OF THE TECHNICAL MATERIEL CORP. ITS UNAUTHORIZED USE OR REPRODUCTION IN WHOLE OR IN PART IS STRICTLY FORBIDDEN.		

REQ'D.	ITEM	PART NUMBER	DESCRIPTION	SYMBOL
AALTONEN LIST OF MATERIAL				
MATERIAL				
FINISH				
UNLESS OTHERWISE SPECIFIED DIMENSIONS ARE IN INCHES AND INCLUDE CHEMICALLY APPLIED OR PLATED FINISHES			TITLE	
DECIMALS .X ± .05 .XX ± .01 .XXX ± .005			THE TECHNICAL MATERIEL CORP. MAMARONECK, NEW YORK	
FRACTIONS ± 1/64 ANGLES ± 0° 30'			DIAGRAM, SCHEMATIC, ELECTRICAL (POWER SUPPLY)	
DRAWN	DATE	FINAL APPROVAL	DATE	
T. RAMIREZ	2/6/64	RJC		
CHECKED	DATE			
@	8-17-64			
ELECT. DES.	DATE			
JTB	8/19/64			
MECH. DES.	DATE			
SHEET			CK-719	
			REV. LTR.	
			B	