

NOTICE TO PERSONS RECEIVING THIS DRAWING

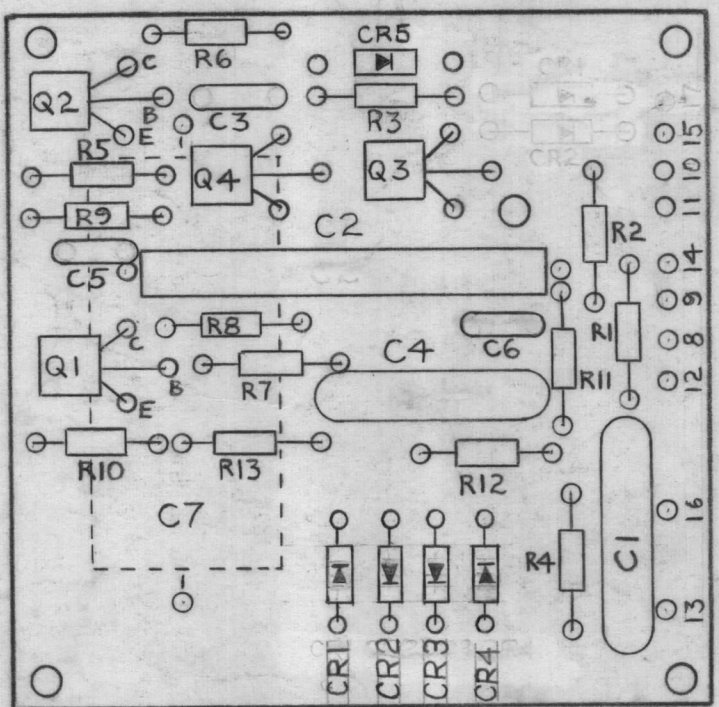
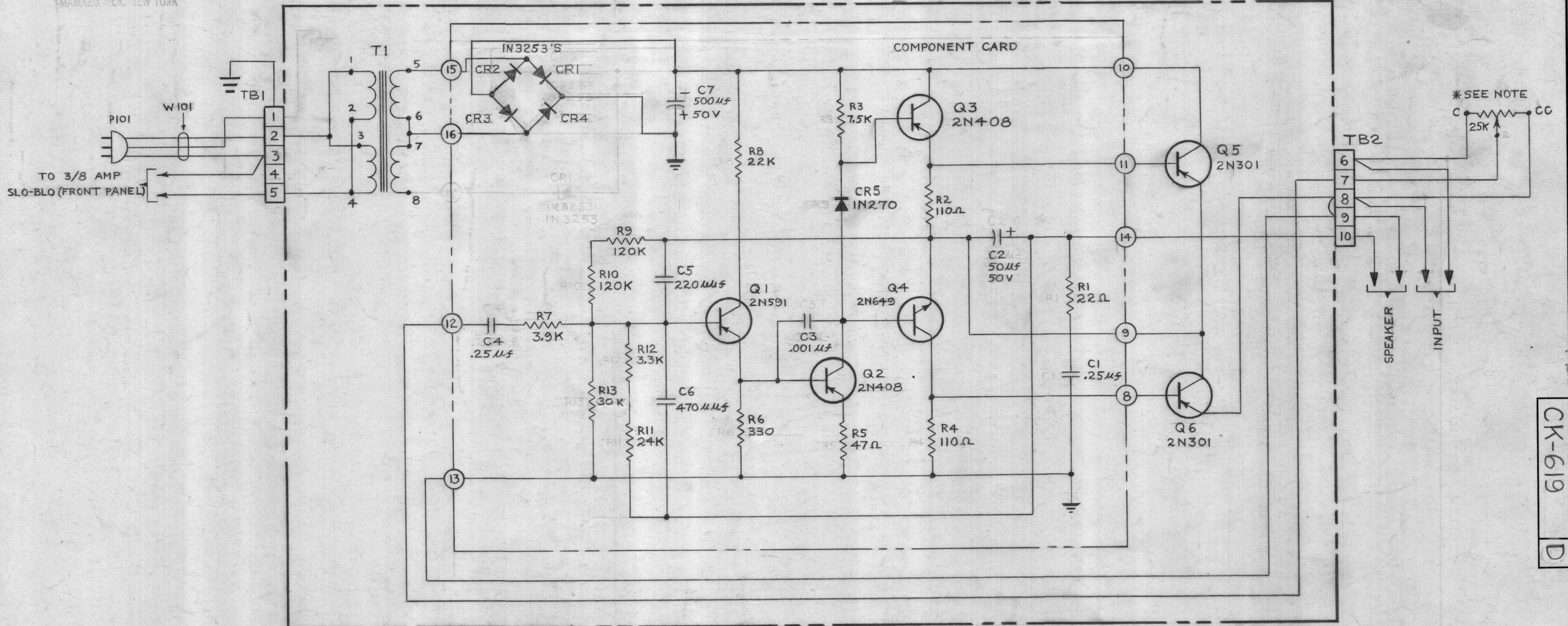
THE TECHNICAL MATERIEL CORPORATION claims proprietary right in the material disclosed hereon. This drawing is issued in confidence for engineering information only and may not be reproduced or used to manufacture anything shown hereon without permission from THE TECHNICAL MATERIEL CORPORATION to the user. This drawing is loaned for mutual assistance and is subject to recall at any time.

Property of:

THE TECHNICAL MATERIEL CORPORATION
MAMARONECK, NEW YORK

REVISIONS						
ZONE	SYM	DESCRIPTION	DATE	E.M.N. NO.	DRAFT	CHKD
E5	A	R13 WAS 30K	5-1-63	8949		
E5,D4	B	R13 WAS 6.8K, R6 WAS 1K	8-5-63	9710	AK	
G5,B7	C	BRIDGE RECT. WAS FULL WAVE TYPE, T1 GND. SYM. RELOC. CR1, CR2, CR3 RELOC., CR4 ADDED.	4-14-64	11190	A.M.	
F1,G6	D	TB1 & TB2 WERE T1 & T2	8-14-64	12126	BSB	

AZ-100 REF



COMPONENT CARD LAYOUT

* NOTE: SEE BSP SCHEMATIC FOR REF SYMBOL.
ALL RESISTORS ARE ± 5%

NOTES

BSP		
Q'TY./UNIT	MODEL USED ON	ASS'Y. NO.
SCALE	CODE	

THE CONTENTS OF THIS DRAWING ARE THE EXCLUSIVE PROPERTY OF THE TECHNICAL MATERIEL CORP. ITS UNAUTHORIZED USE OR REPRODUCTION IN WHOLE OR IN PART IS STRICTLY FORBIDDEN.

REQ'D.	ITEM	PART NUMBER	DESCRIPTION	SYMBOL
STRUMER LIST OF MATERIAL				
MATERIAL THE TECHNICAL MATERIEL CORP. MAMARONECK, NEW YORK				
FINISH TITLE SCHEMATIC DIAGRAM & COMPONENT CARD LAYOUT AZ100				
DRAWN <i>n. Reta</i>		DATE 1/8/63	FINAL APPROVAL <i>BP</i>	
CHECKED <i>AK</i>		DATE 4/3/63		
ELECT. DES. <i>AK</i>		DATE 4-3-63	CK-619	
MECH. DES. <i>AK</i>		DATE 4-3-63	D	
DECIMALS .X ± .05 .XX ± .01 .XXX ± .005			FRACTIONS ± 1/64 ANGLES ± 0° 30'	
TOLERANCES			SHEET	