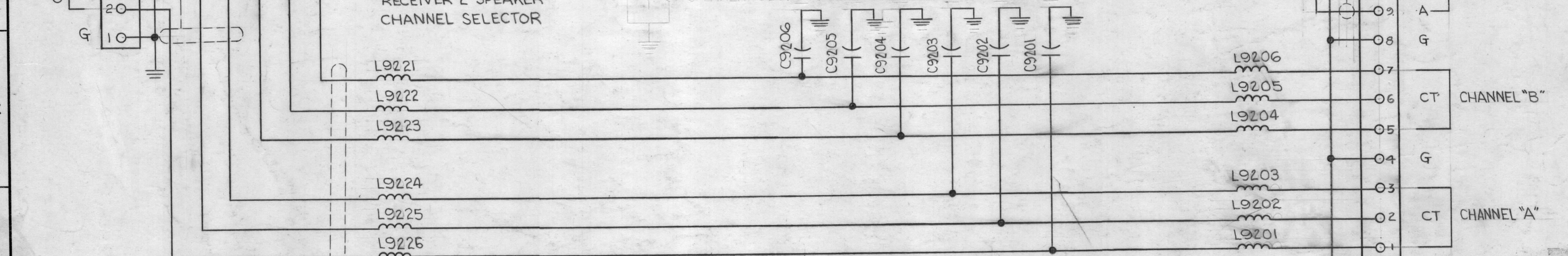
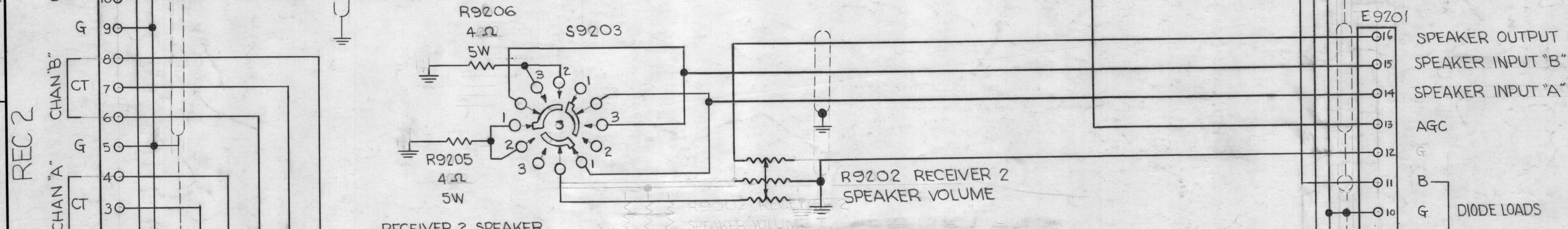
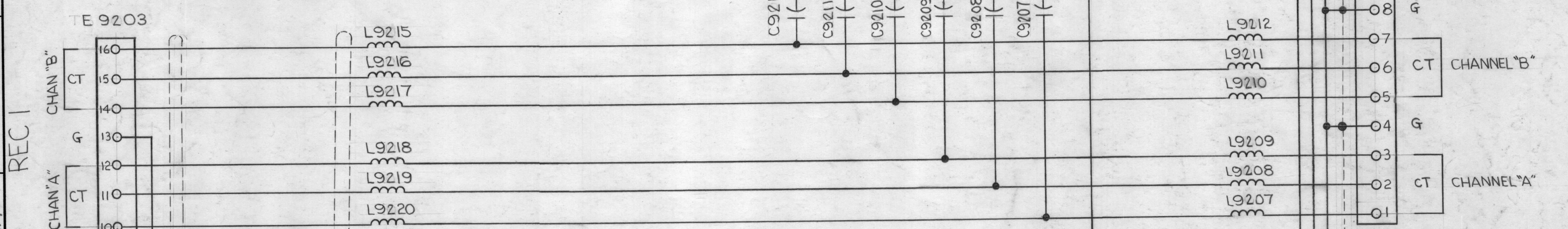
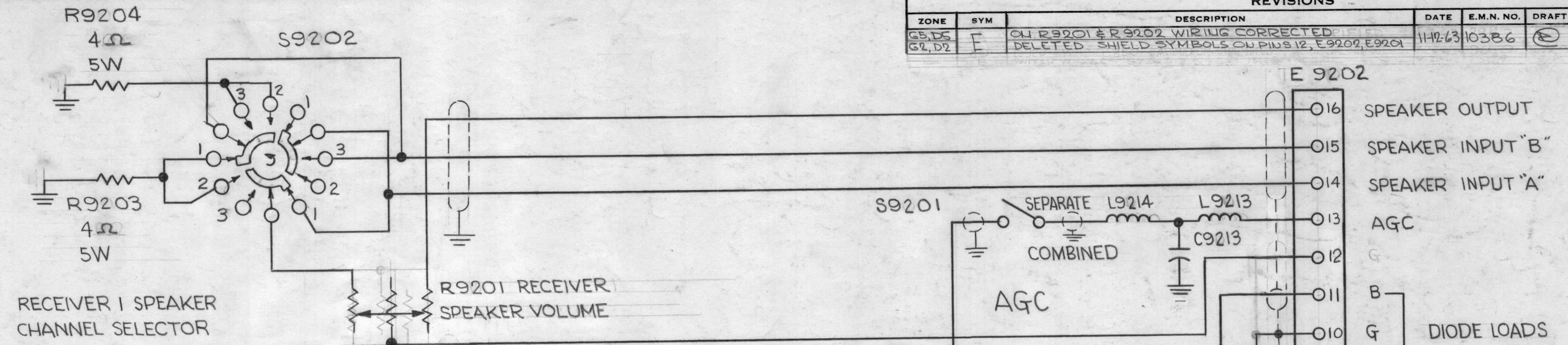


NOTICE TO PERSONS RECEIVING THIS DRAWING

THE TECHNICAL MATERIEL CORPORATION claims proprietary right in the material disclosed herein. This drawing is issued in confidence for engineering information only and may not be reproduced or used to manufacture anything shown hereon without permission from THE TECHNICAL MATERIEL CORPORATION to the user. This drawing is prepared for mutual assistance and is subject to change without notice.

Property of
THE TECHNICAL MATERIEL CORPORATION
MAMARONECK, N.Y.

ZONE		SYM	DESCRIPTION	DATE	E.M.N. NO.	DRAFT	CHKD	APPD
G5, D5	G2, D2	E	CH R9201 & R9202 WIRING CORRECTED	11-12-63	103B6			
			DELETED SHIELD SYMBOLS ON PINS 12, E9202, E9201					



- NOTES:**
- 1- ALL SWITCHES SHOWN IN POSITION 1 CHANNEL A.
 - 2- ALL SWITCHES SHOWN FROM WIRED SIDE.
 - 3- ALL CHOKES ARE 10 μ h.
 - 4- ALL CAPACITORS ARE 50 μ mf.

SWITCH POSITIONS	SPEAKER CHANNEL
1	"A"
2	OFF
3	"B"

LAST SYMBOLS
C9213
L9226
S9203
TB9203

REQ'D.	ITEM	PART NUMBER	DESCRIPTION	SYMBOL
LIST OF MATERIAL				
THE TECHNICAL MATERIEL CORP. MAMARONECK, NEW YORK				
TITLE SCHEMATIC DIAGRAM HSP-2				
DRAWN <i>P. Juchin</i>		DATE <i>6-21-62</i>	FINAL APPROVAL <i>[Signature]</i>	
CHECKED <i>[Signature]</i>		DATE		
ELECT. DES. <i>R. KOHN</i>		DATE <i>3 JULY 62</i>	SHEET CK-595	
MECH. DES.		DATE	REV. LTR. E	

Q'TY./UNIT	MODEL USED ON	ASS'Y. NO.
1	HSP-2	
SCALE	CODE	

THE CONTENTS OF THIS DRAWING ARE THE EXCLUSIVE PROPERTY OF THE TECHNICAL MATERIEL CORP. ITS UNAUTHORIZED USE OR REPRODUCTION IN WHOLE OR IN PART IS STRICTLY FORBIDDEN.

NOTES