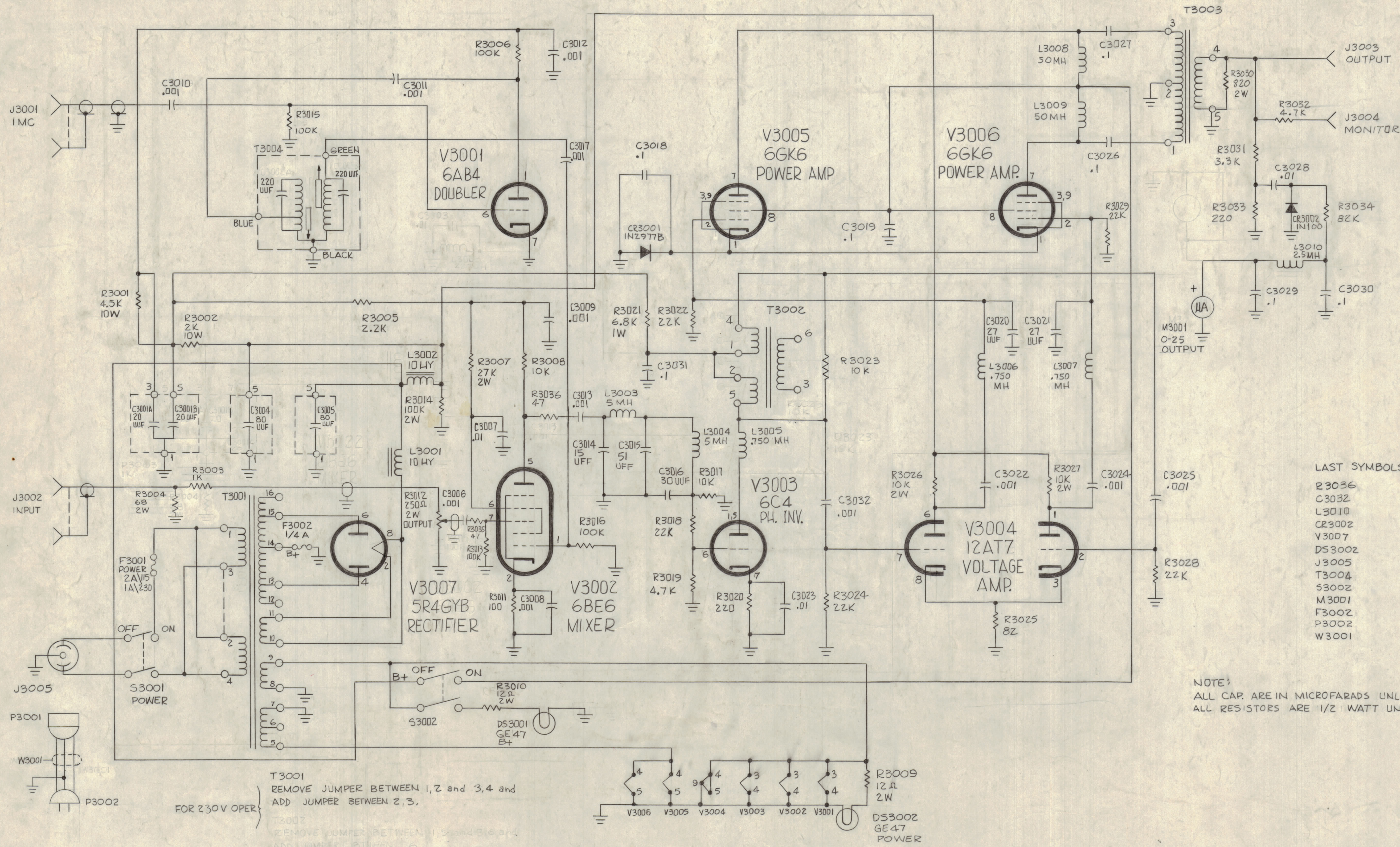


NOTICE TO PERSONS RECEIVING THIS DRAWING

THE TECHNICAL MATERIEL CORPORATION claims proprietary right in the material disclosed herein. This drawing is issued in confidence for engineering information only and may not be reproduced or used to manufacture anything shown herein without permission from THE TECHNICAL MATERIEL CORPORATION to the user. This drawing is loaned for mutual assistance and is subject to recall at any time.

Property of:
THE TECHNICAL MATERIEL CORPORATION
MAMARONECK, NEW YORK

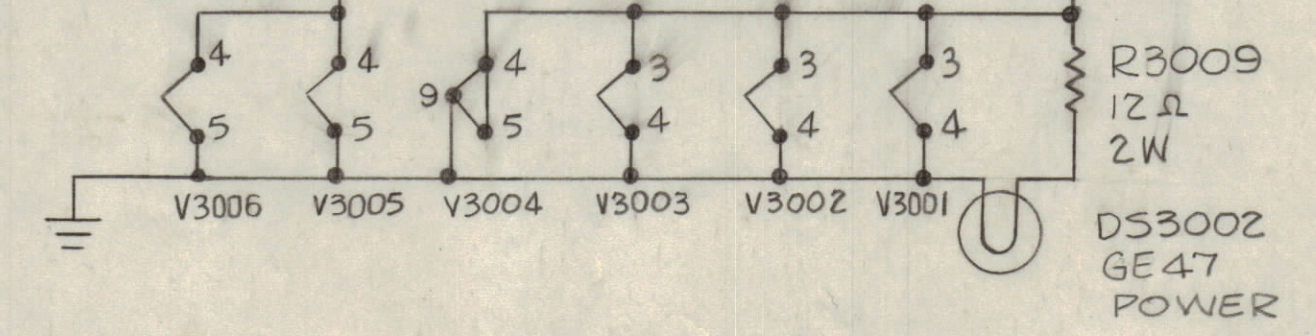


- | | |
|--------------|-----------------|
| LAST SYMBOLS | MISSING SYMBOLS |
| R3036 | C3003 |
| C3032 | C3002 |
| L3010 | |
| CR3002 | |
| V3007 | |
| DS3002 | |
| J3005 | |
| T3004 | |
| S3002 | |
| M3001 | |
| F3002 | |
| P3002 | |
| W3001 | |

NOTE:
ALL CAP. ARE IN MICROFARADS UNLESS NOTED.
ALL RESISTORS ARE 1/2 WATT UNLESS NOTED.

T3001
REMOVE JUMPER BETWEEN 1,2 and 3,4 and
ADD JUMPER BETWEEN 2,3.
FOR 230V OPER.

T3002
REMOVE JUMPER BETWEEN 1,5 and 6,8 and
ADD JUMPER BETWEEN 1,6.



SYM	ZONE	DESCRIPTION	DATE	CH. NO.	DRAWN	CHECKER	ENG. APP.
D	D6	R3023 RELOCATED	3-25-63	8	W		
C	D6	OUTPUT ADDED TO T3001, R3004 RELOCATED, C3002 DELETED	5-17-62	6692	G.B.		
B	D6	TIE POINT BETWEEN R3036 & C3013 DELETED	5-25-62	6754	H.F.		
A	E7	ADDED JUNCTION BETWEEN R3036 & C3013	1-4-62	6083	H.F.		
	F8	64 C3003 Deleted; Ont T3003 Terminals Revised; L3000 SERIES CHANGED					
	G3	R3001, P3002, W3001 Added; 2W Added to R3030					

UNLESS OTHERWISE SPECIFIED:
DIMENSIONS ARE IN INCHES
TOLERANCES ON
FRACTIONS ± 1/64
DECIMALS ± .005
ANGLES ± 1/2°

SCALE

MAXIMUM ALLOWABLE TOLERANCES HAVE BEEN DETERMINED AND ANY DEVIATIONS WILL BE CAUSE FOR REJECTION. REMOVE ALL BURRS & SHARP EDGES

REQ. UNIT	MODEL	SECTION	ASS'Y. NO.	DATE	TYPE & TEMPER.	HEAT TREAT. SPEC.	FINISH & S.P.C. NO.
	LFA-2			11-20-61			
USED ON				FINISH & S.P.C. NO.			

REQ. ITEM	PART NO.	DESCRIPTION	SYMBOL
THE TECHNICAL MATERIEL CORP. MAMARONECK, NEW YORK			
SCHEMATIC DIAGRAM (LFA-2)			
DRAWN: RUZZO			
CHECKED: [Signature]			
FINAL APPROVAL: [Signature]			
CK-544			
SHEET OF			

CK-544 D