

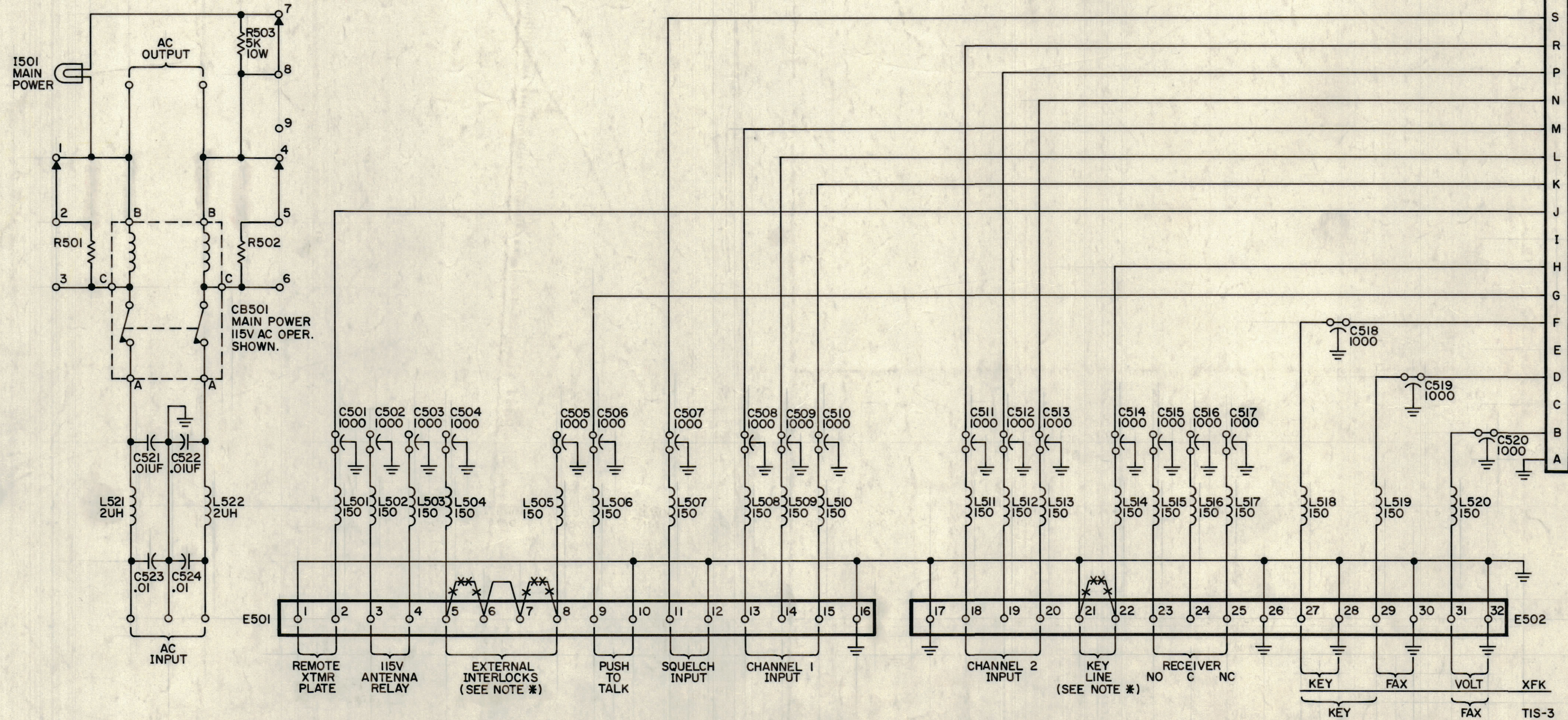
NOTE TO PERSONS RECEIVING THIS DRAWING

THE TECHNICAL MATERIEL CORPORATION claims proprietary right in the material disclosed herein. This drawing is issued in confidence for engineering information only and may not be reproduced or used to manufacture anything shown herein without permission from THE TECHNICAL MATERIEL CORPORATION to the user. This drawing is loaned for mutual assistance and is subject to recall at any time.

Property of:
THE TECHNICAL MATERIEL CORPORATION
MAMARONECK, NEW YORK

FOR 230V AC OPERATION OF CB501

- 1- REMOVE STRAP MARKED FROM TERMINAL 1 AND ATTACH TO TERMINAL 3.
- 2- " " " " " " " " 4.
- 3- " " " " " " " " 7.



LAST SYMBOLS	MISSING SYMBOLS
C524	
CB501	
E502	
F502	
150I	
J503	
L522	
R503	

NOTE * WHEN EXTERNAL INTERLOCKS AND/OR KEYLINE IS USED REMOVE JUMPERS MARKED *** FROM TERMINALS 5 & 6, 7 & 8 AND 21 & 22.

UNLESS OTHERWISE SPECIFIED
ALL CAPACITORS ARE IN MICRO-MICROFARADS
ALL COILS ARE IN MILLIHENRIES.

CK-493

SYM	ZONE	DESCRIPTION	DATE	CH. NO.	DRAFTS	CHECKER	ENG. APP.
UNLESS OTHERWISE SPECIFIED:							SCALE
DIMENSIONS ARE IN INCHES							MAXIMUM ALLOWABLE TOLERANCES HAVE BEEN DETERMINED AND ANY DEVIATIONS WILL BE CAUSE FOR REJECTION. REMOVE ALL BURRS & SHARP EDGES
FRACTIONS ± 1/64		DECIMALS ± .005		ANGLES ± 1/2°			

REQ. ITEM	PART NO.	DESCRIPTION	SYMBOL
THE TECHNICAL MATERIEL CORP. MAMARONECK, NEW YORK			
SCHEMATIC, DIAGRAM (MODEL APP-5)			
DRAWN		J.C. BIELE	
CHECKED		Ron Kohn	
FINAL APPROVAL			
CK-493			
ELEC. DES. APP.		MECH. DES. APP.	
SHEET OF			

REQ. PER UNIT	MODEL	SECTION	ASSY. NO.	DATE
	APP-5			3-23-61
USED ON				
FINISH & SPEC. NO.				