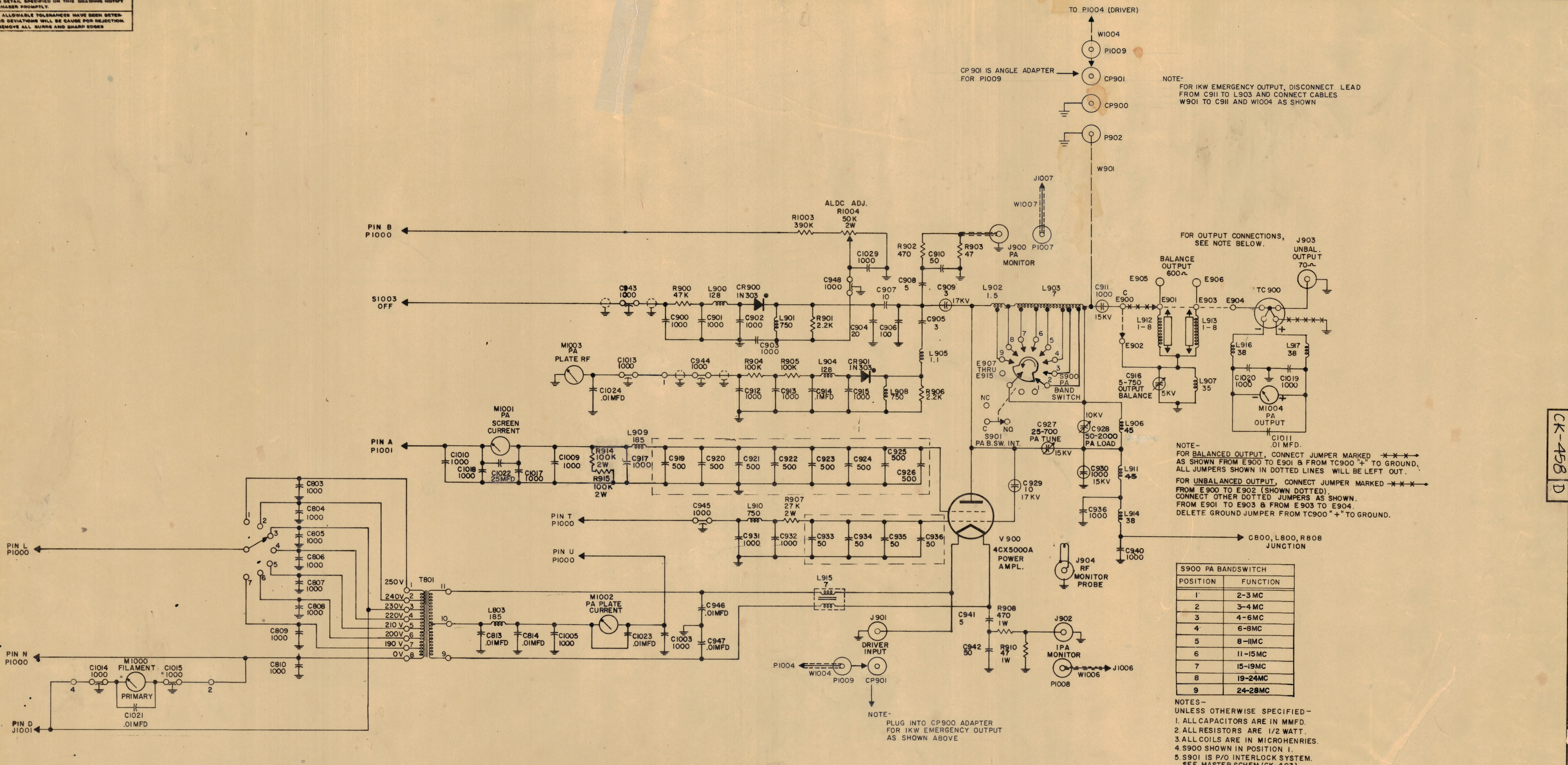


IF IT IS FOUND DESIRABLE TO CHANGE ANY TOLERANCE OR OTHER DETAIL DESCRIBED ON THIS DRAWING NOTIFY THE PURCHASER PROMPTLY.
 MAXIMUM ALLOWABLE TOLERANCES HAVE BEEN DETERMINED AND DEVIATIONS WILL BE CAUSE FOR REJECTION. REMOVE ALL BURNS AND SHARP EDGES.



NOTE-
 FOR 1KW EMERGENCY OUTPUT, DISCONNECT LEAD FROM C911 TO L903 AND CONNECT CABLES W901 TO C911 AND W1004 AS SHOWN

FOR OUTPUT CONNECTIONS, SEE NOTE BELOW.

NOTE-
 FOR BALANCED OUTPUT, CONNECT JUMPER MARKED *** AS SHOWN FROM E900 TO E901 & FROM TC900 "+" TO GROUND, ALL JUMPERS SHOWN IN DOTTED LINES WILL BE LEFT OUT.
 FOR UNBALANCED OUTPUT, CONNECT JUMPER MARKED *** FROM E900 TO E902 (SHOWN DOTTED), CONNECT OTHER DOTTED JUMPERS AS SHOWN. FROM E901 TO E903 & FROM E903 TO E904. DELETE GROUND JUMPER FROM TC900 "+" TO GROUND.

S900 PA BANDSWITCH	
POSITION	FUNCTION
1	2-3 MC
2	3-4 MC
3	4-6 MC
4	6-8 MC
5	8-11 MC
6	11-15 MC
7	15-19 MC
8	19-24 MC
9	24-28 MC

NOTES-
 UNLESS OTHERWISE SPECIFIED-
 1. ALL CAPACITORS ARE IN MMFD.
 2. ALL RESISTORS ARE 1/2 WATT.
 3. ALL COILS ARE IN MICROHENRIES.
 4. S900 SHOWN IN POSITION 1.
 5. S901 IS P/O INTERLOCK SYSTEM. SEE MASTER SCHEM.(CK-403) FOR CONNECTIONS.
 6. THE 800 & 1000 SYMBOL SERIES SHOWN ARE NOT P/O P.A.

LAST SYMBOLS
 C948
 CR901
 *E915
 J904
 L917
 R915
 S901
 TC900
 W900
 *NOTE
 E907 THRU E915 ARE S900 CONTACTS
 W901
 P902

MISSING SYMBOLS
 C937, 938, 918
 P900, 901

R909, 911, 912, 913
 W900

NOTE-
 PLUG INTO CP900 ADAPTER FOR 1KW EMERGENCY OUTPUT AS SHOWN ABOVE

D	1	On S900 Contacts Revised	8/24/60	5480	WJL	[Signature]
C	1	Feed Thru #1 was C1001, #2 was C1000, #4 was C1002	1/1/60	3850	Ru	[Signature]
B	2	E915 was E913	1/15/60	3705	Ru	[Signature]
A	1	W901, P902, CP900 & CP901 AND APPLYING NOTES ADDED				
A	2	C1022 was .01 MFD	8-22-60		Ru	[Signature]
A	1	R914, R915 ADDED				

1	GPT-10KR AX-236	8-8-60
REQ PER UNIT	PROJECT P.O.	DATE
	ABST. NO.	
	USED ON	

REQ	ITEM	PART NO.	DESCRIPTION	SYMBOL
			THE TECHNICAL MATERIEL CORP. MAMARONECK, NEW YORK	
			SCHEMATIC DIAGRAM	
			P.A. SECTION 2-28 M6	
			DRAWN [Signature]	
			ELEC. DES. APP. [Signature]	
			MECH. DES. APP. [Signature]	
			CHECKED [Signature]	
			FINAL APPROVAL [Signature]	
				CK-458 D

CK-458 D