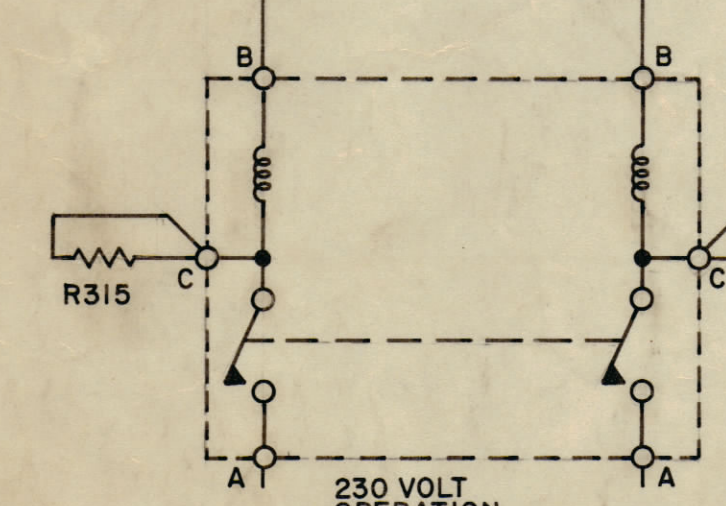
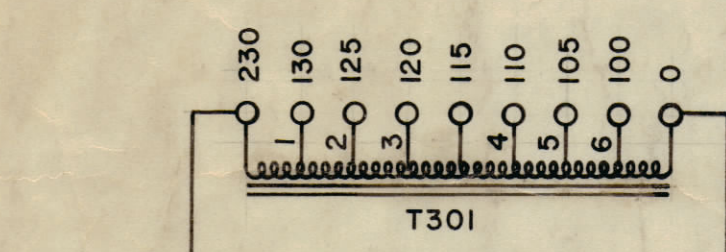


IF IT IS FOUND DESIRABLE TO CHANGE ANY TOLERANCE OR OTHER DETAIL SPECIFIED ON THIS DRAWING NOTIFY THE PURCHASER PROMPTLY.  
 MAXIMUM ALLOWABLE TOLERANCES HAVE BEEN DETERMINED AND DEVIATIONS WILL BE CAUSE FOR REJECTION. REMOVE ALL BURRS AND SHARP EDGES.

NOTES— UNLESS OTHERWISE SPECIFIED.  
 1— ALL CAPACITORS ARE IN MICROFARADS.  
 2— ALL RESISTORS ARE IN OHMS. 1/2 WATT.  
 3— ALL COILS ARE IN MICROHENRIES.

LAST SYMBOLS  
 C306  
 CB303  
 E302  
 F304  
 I303  
 J303  
 K303  
 L303  
 M301  
 R316  
 S303  
 T303  
 V305  
 CR301

MISSING SYMBOLS  
 R309  
 R312

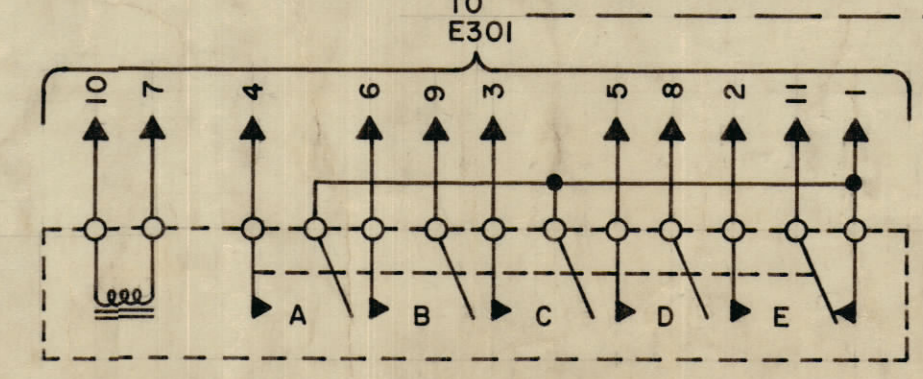
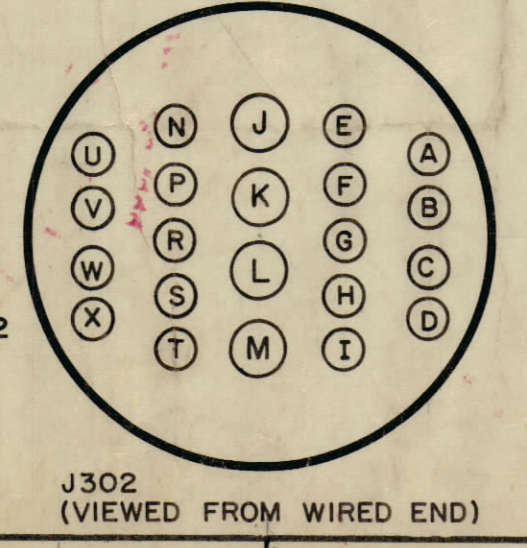
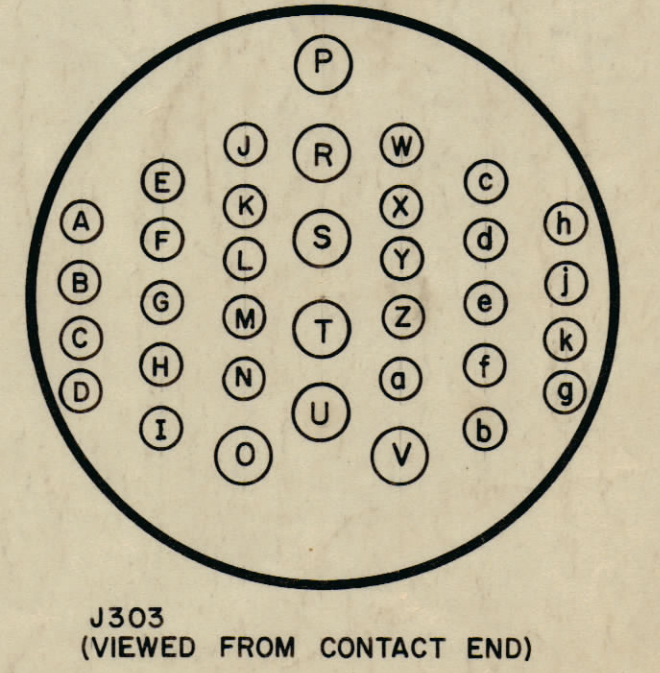
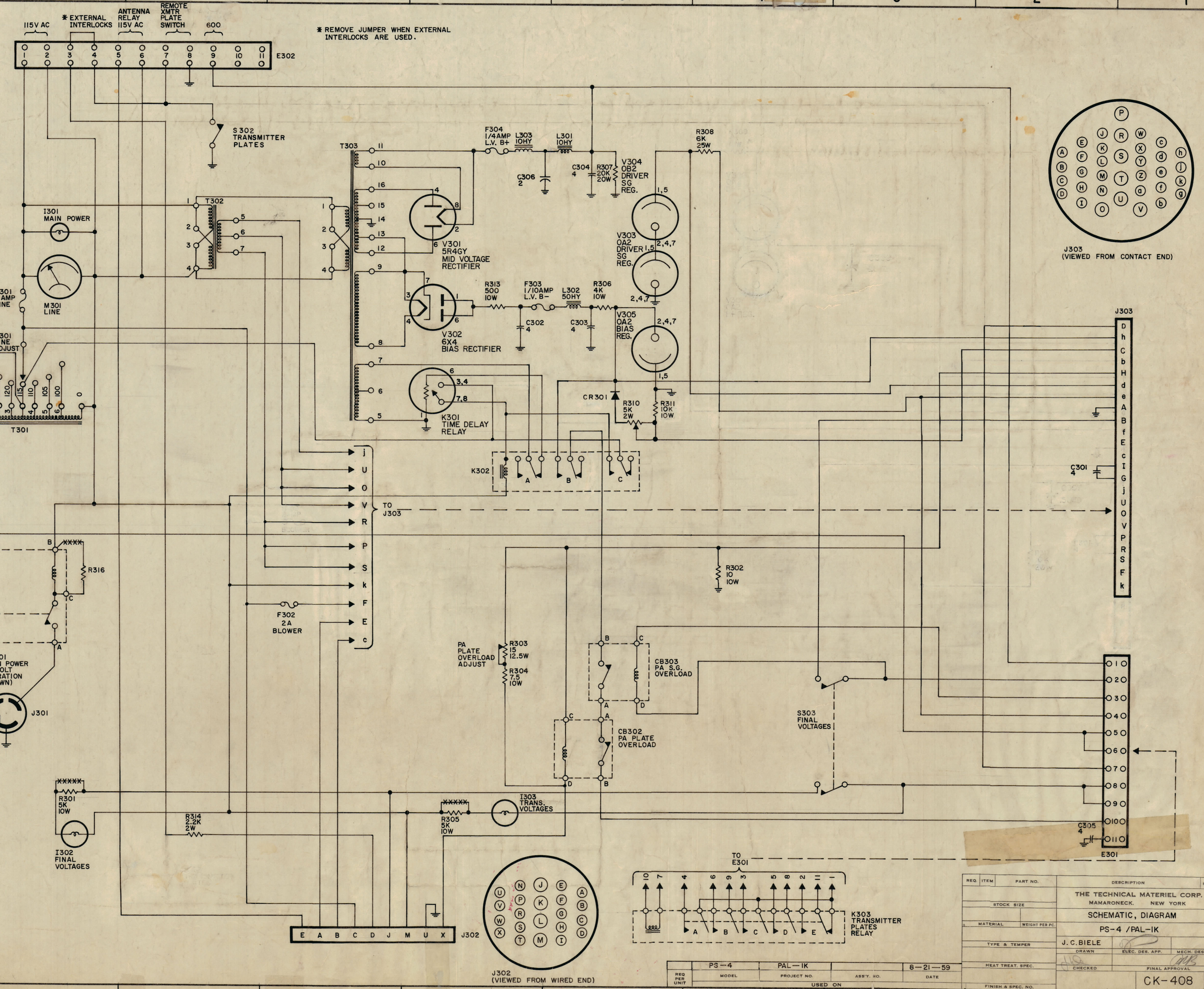


NOTE— FOR 230 VOLT OPERATION OF CB301.  
 1. DISCONNECT LEADS MARKED XXXXX  
 2. CONNECT R315 & R316 TO TERMINAL "C" OF CB301.  
 3. CONNECT WHITE LEAD OF T301 TO TERMINAL 230.

ISSUE	ITEM	CHANGED FROM	DATE	CN. NO.	DRAFTS	CHECKER	ENG. APP.
K	1	On K301 pin 7, 8, 4, 3, 4, wire 8	3-10-61	4360	RU	OKS	RK
J	2	CR-301 was Added	11-1-60	3453	RU	OKS	RK
H	1	Value of R311 was 4.7K, 2W	11-8-60	3425	OKS	OKS	RK
G	1	F302 ADDED (left side)	11-8-60	3425	OKS	OKS	RK
F	1	COMPLETELY REVISED	11-8-60	3301	OKS	OKS	RK
E	1	R318 DELETED	8-24-60	2875	RU	OKS	RK
D	1	T301 WAS T305 (SYMBOL REVERSED)	11-2-59	1584	OKS	OKS	RK
C	1	R317 WAS 3K, 10W	11-2-59	1584	OKS	OKS	RK
B	1	R306, R307 ADDED	11-2-59	1584	OKS	OKS	RK
A	1	R311 DELETED	10-2-59	1864	OKS	OKS	RK

ALL DEC. DIM. ±  
 OTHERS FRACTIONAL DIM. ±  
 ANGULAR DIM. ±

DRILL, PUNCH, COMMERCIAL STOCK  
 SIZES AND MANUFACTURERS  
 TOLERANCES ARE NOT INCLUDED.



REQ. ITEM	PART NO.	DESCRIPTION	SYMBOL
THE TECHNICAL MATERIEL CORP. MAMARONECK, NEW YORK			
STOCK SIZE			
MATERIAL WEIGHT PER PC.			
TYPE & TEMPER			
HEAT TREAT. SPEC.			
FINISH & SPEC. NO.			

SCHEMATIC DIAGRAM  
 PS-4 / PAL-1K

J. C. BIELE  
 DRAWN ELEC. DES. APP. MECH. DES. APP.

PS-4 PAL-1K  
 PROJECT NO. ASSY. NO. 8-21-59  
 USED ON DATE

CK-408