

ISSUE ITEM	CHANGED FROM	DATE	CN. NO.	DRAFTS	CHECKER	ENG. APP.
A 1	CASING & CON. ADDED	1/27/56	1	1	W.P.	A.J.J.
B 2	ES01, ES02, ES03, ES04 CARRIERS ES06 WAS P506	11/1/56	2	6	W.P.	A.J.J.
C 1	ES01 - Terminals 13 & 14 Conn- "11" / 27 / 57 Added Conn. to Pins "D" & "E" of ES01 Added Ref-cr-330 ES01, ES02, ES03, ES04 CARRIERS ES06 WAS P506	11/27/57	3	6	W.P.	A.J.J.

DRILL, PUNCH, COMMERCIAL STOCK
SIZES AND MANUFACTURERS
TOLERANCES ARE NOT INCLUDED.

SCALE: (COMB "C")

600Ω AUDIO IN (COMB "B")
KEY LINE OUT ANT RELAY
REMOTE IN 1270V DC
12 VDC
LINE IN SINGLE PHASE

REQ. ITEM	PART NO.	DESCRIPTION	SYMBOL
		THE TECHNICAL MATERIEL CORP. NEW YORK	
		MAMARONECK, NEW YORK	
		SCHEMATIC DIAGRAM	
		CABINET FRAME	
		DRAWN	
		ELEC. DES. APP.	
		MECH. DES. APP.	
		CHECKED	
		FINAL APPROVAL	
		CK-321	D

FINISH & SPEC. NO.	USED ON
	PROJECT NO. 271
	MODEL GPT-750
	ASSY. NO.
	DATE 2-28-56

STOCK SIZE	WEIGHT PER PC.

TYPE & TEMPER.

HEAT TREAT. SPEC.

FINISH & SPEC. NO.

DESCRIPTION

SYMBOL

DESCRIPTION

SYMBOL

DESCRIPTION

SYMBOL

DESCRIPTION

SYMBOL

DESCRIPTION

SYMBOL

DESCRIPTION

SYMBOL

DESCRIPTION

SYMBOL

DESCRIPTION

SYMBOL

DESCRIPTION

SYMBOL

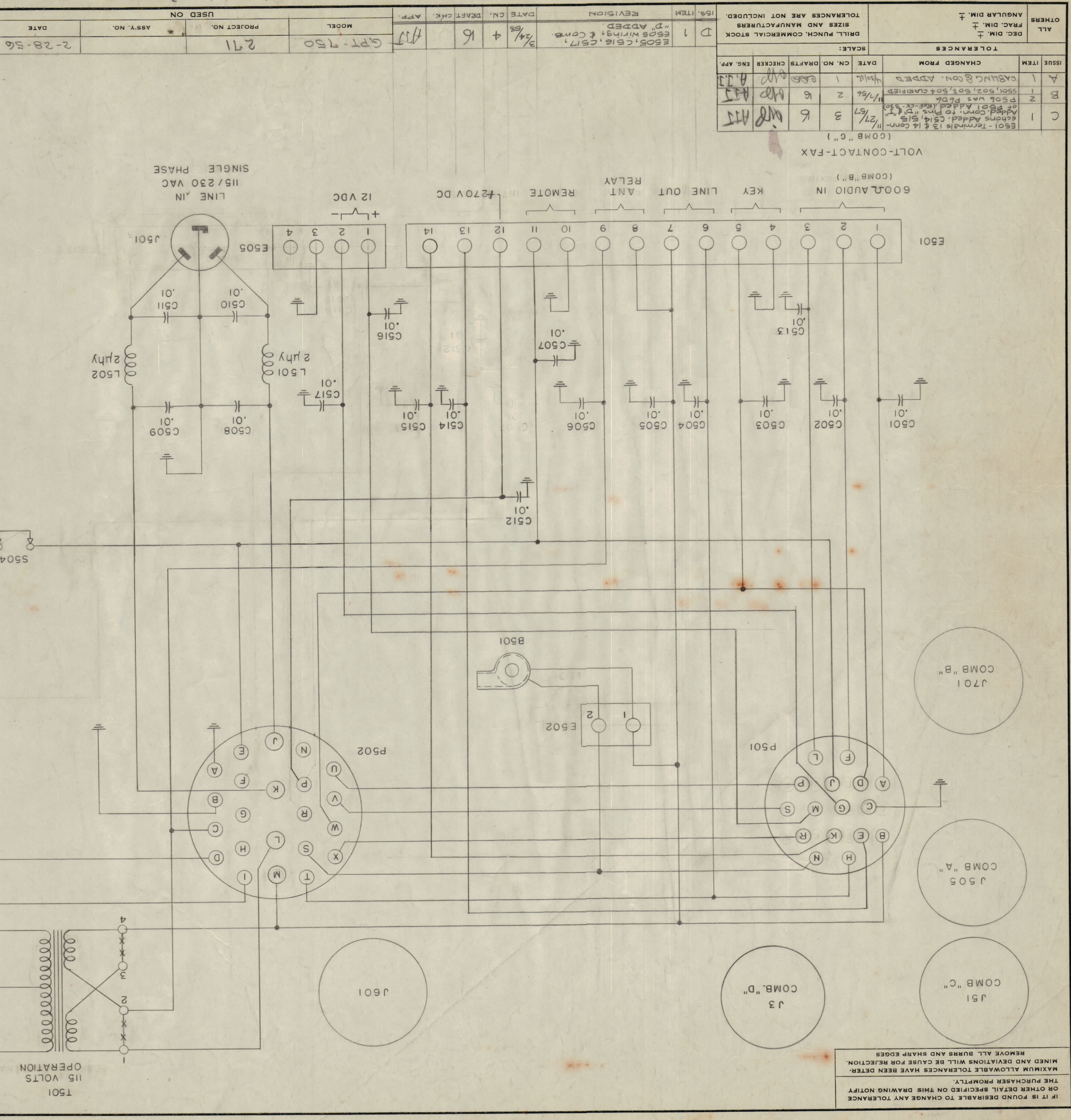
DESCRIPTION

SYMBOL

DESCRIPTION

SYMBOL

DESCRIPTION



NOTE: ALL CAPACITORS ARE IN μfd

REMOVE JUMPERS ** AND PLACE BETWEEN TERMINALS 2 & 3 AS SHOWN ABOVE.

FOR 230 VOLTS OPERATION

TO PLATE CAPS

115 VOLTS OPERATION

230 VOLTS OPERATION

IF IT IS FOUND DESIRABLE TO CHANGE ANY TOLERANCE OR OTHER DETAIL SPECIFIED ON THIS DRAWING NOTIFY THE PURCHASER PROMPTLY.
MAXIMUM ALLOWABLE TOLERANCES HAVE BEEN DETERMINED AND DEVIATIONS WILL BE CAUSE FOR REJECTION.
REMOVE ALL BURRS AND SHARP EDGES