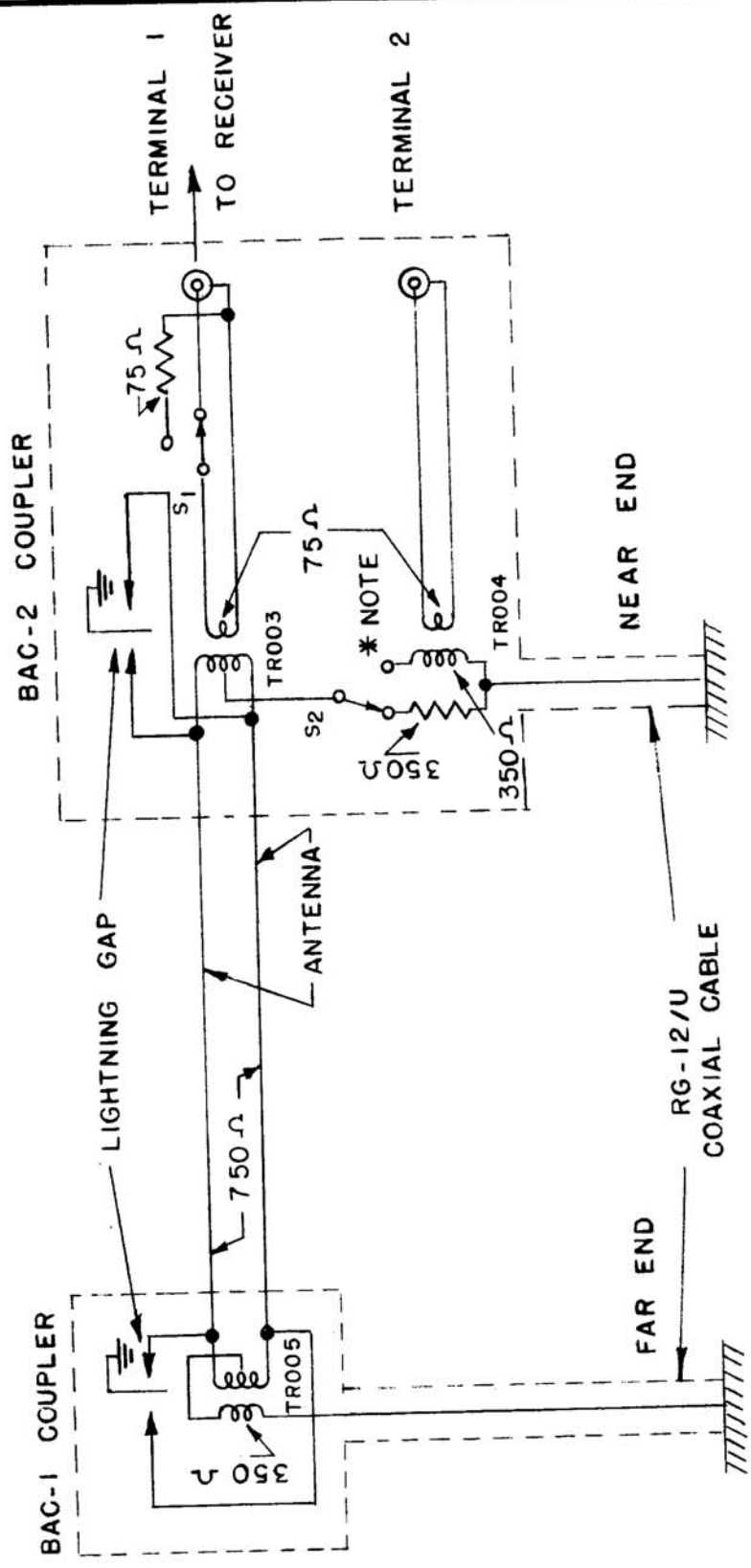


CM-311

to 64%

DIRECTION OF RECEIVED SIGNAL



* NOTE :

THIS SWITCH IS CONNECTED TO THE COIL SIDE AND A RECEIVER CONNECTED TO TERMINAL 2 FOR SIMULTANEOUS RECEPTION OF SIGNALS IN EITHER DIRECTION.

FIGURE 2 DIRECTION OF RECEIVED SIGNAL FROM NEAR END

was approved (8/11/55)

DATE	6-7-51
DRN.	<i>[Signature]</i>
CHKD.	<i>[Signature]</i>
APPD.	<i>[Signature]</i>

BEVERAGE WAVE ANNTENNA COUPLER

MODEL BAC-1, BAC-2

THE TECHNICAL MATERIEL CORPORATION MAMARONECK, NEW YORK

SHEET OF NO. *PK-11*