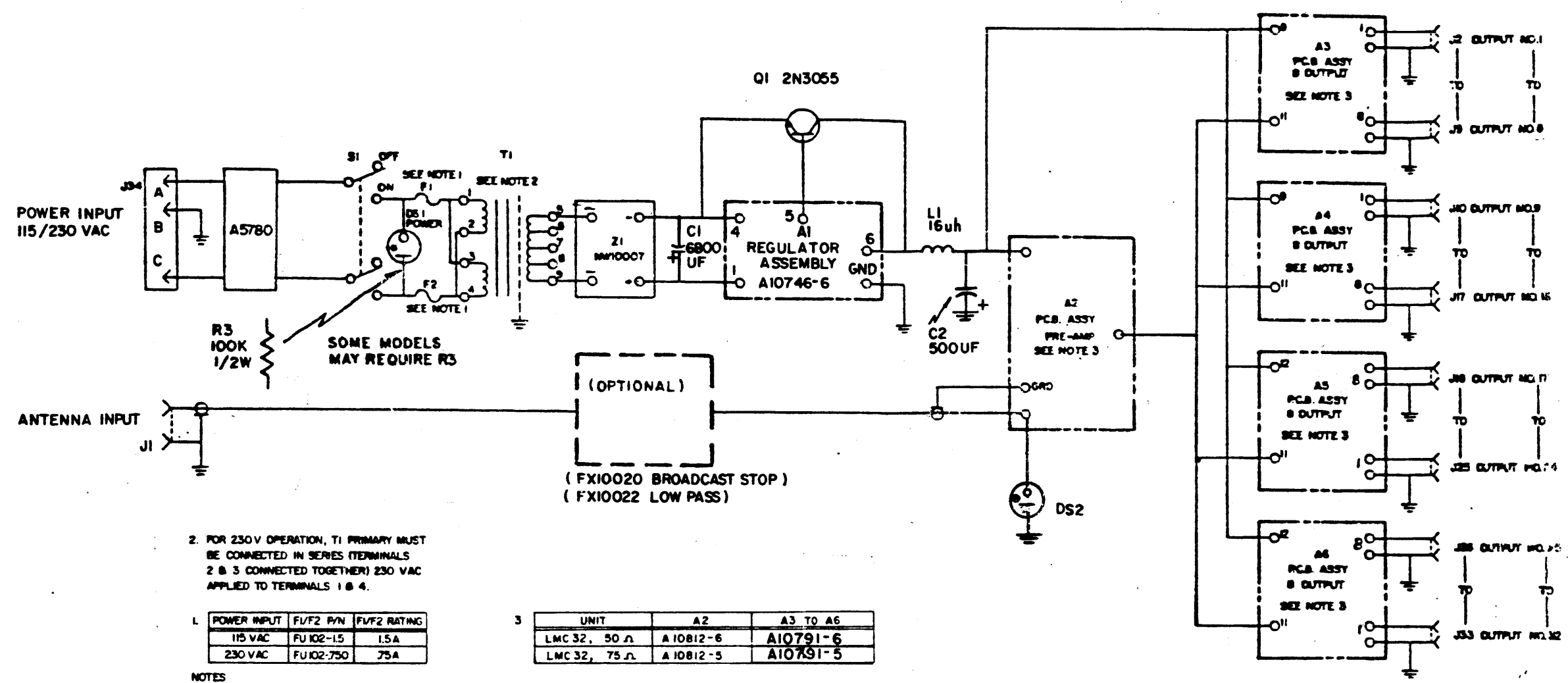


REVISIONS						DATE	APPROVED
E.M.N. NO.	DRAFT	CHKD	ZONE	LTR	DESCRIPTION		
					ORIGINAL RELEASE for PRODUCTION	1-22-81	



2. FOR 230 V OPERATION, T1 PRIMARY MUST BE CONNECTED IN SERIES (TERMINALS 2 & 3 CONNECTED TOGETHER) 230 VAC APPLIED TO TERMINALS 1 & 4.

POWER INPUT	F1/F2 I/P/N	F1/F2 RATING
115 VAC	FU102-15	1.5A
230 VAC	FU102-750	75A

NOTES

UNIT	A2	A3 TO A6
LMC 32, 50 Ω	A10812-6	A10791-6
LMC 32, 75 Ω	A10812-5	A10791-5

REQ'D	ITEM	PART NUMBER	DESCRIPTION	SYM.
LIST OF MATERIAL				
THE TECHNICAL MATERIEL CORP. MAMARONECK, NEW YORK				
DIAGRAM SCHEMATIC LMC-32A (OVERALL)				
SIZE	CODE IDENT. NO.	DWG NO.	ISSUE	
B	82679	CK2239	∅	
SCALE			SHEET	OF

QTY / UNIT	MODEL USED ON	ASS'Y NO.
1	LMC-32A	
APPLICATION		
CODE		
<p>NOTICE TO PERSONS RECEIVING THIS DRAWING THE TECHNICAL MATERIEL CORPORATION claims proprietary right in the material disclosed hereon. This drawing is issued in confidence for engineering information only and may not be reproduced or used to manufacture anything shown hereon without permission from THE TECHNICAL MATERIEL CORPORATION to the user. This drawing is loaned for mutual assistance and is subject to recall at any time.</p>		

UNLESS OTHERWISE SPECIFIED DIMENSIONS ARE IN INCHES AND INCLUDE CHEMICALLY APPLIED OR PLATED FINISHES

DECIMALS: .X ± .05, .XX ± .01, .XXX ± .005
 FRACTIONS: 1/64, ANGLES: 0°-30'

FINISH

FINAL APPROVAL: _____ DATE: _____
 MECH. DES. _____ DATE: _____
 ELECT. DES. _____ DATE: _____
 CHECKED _____ DATE: _____
 DRAWN _____ DATE: _____