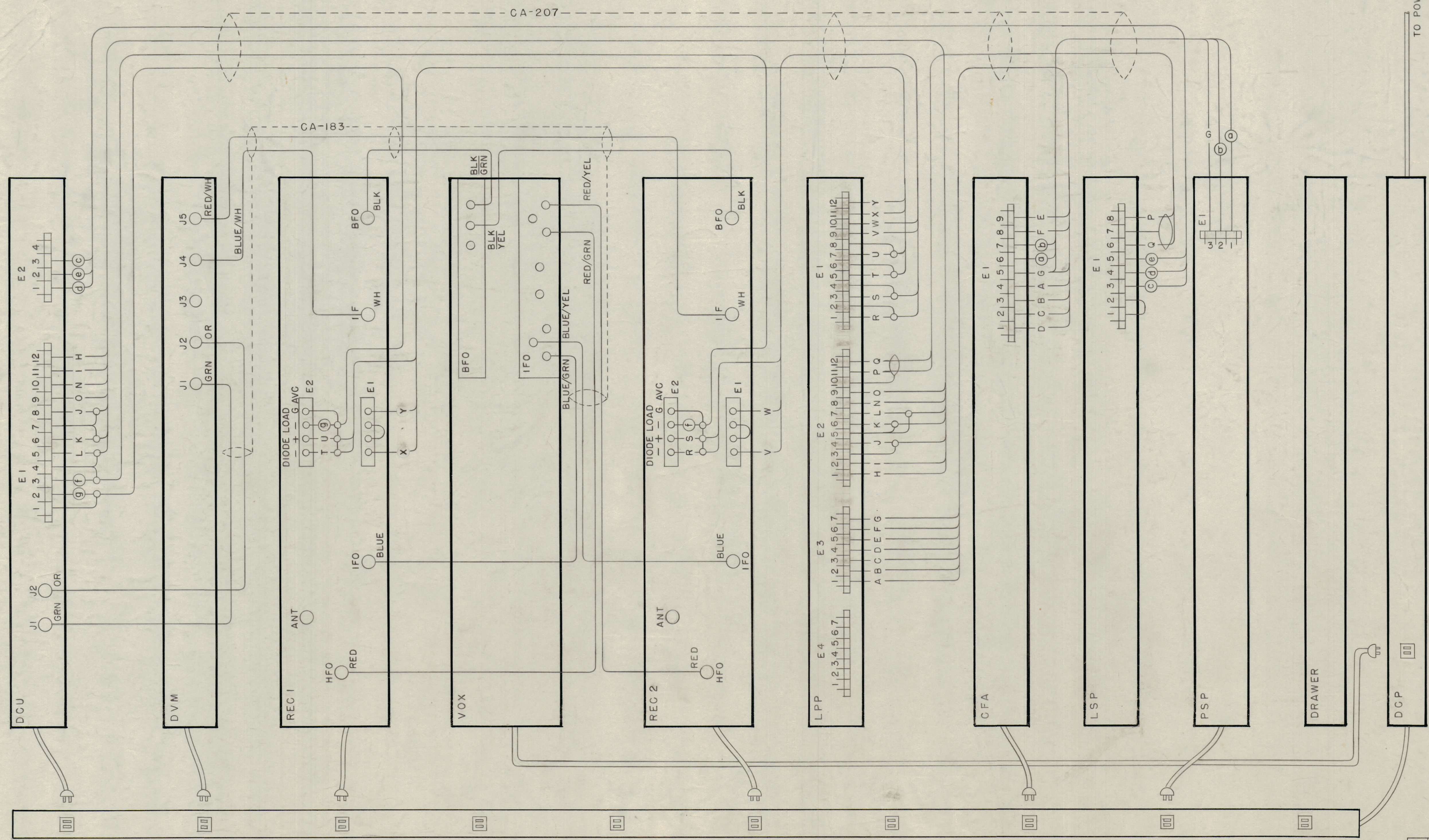


IF IT IS FOUND DESIRABLE TO CHANGE ANY TOLERANCE OR OTHER DETAIL SPECIFIED ON THIS DRAWING NOTIFY THE PURCHASER PROMPTLY.
 MAXIMUM ALLOWABLE TOLERANCES HAVE BEEN DETERMINED AND DEVIATIONS WILL BE CAUSE FOR REJECTION. REMOVE ALL BURRS AND SHARP EDGES

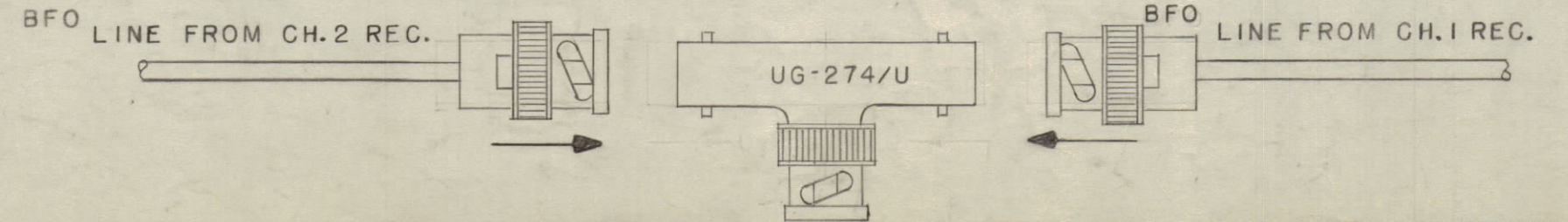
NOTICE TO PERSONS RECEIVING THIS DRAWING

THE TECHNICAL MATERIEL CORPORATION claims proprietary right in the material disclosed herein. This drawing is issued in confidence for engineering information only and may not be reproduced or used to manufacture anything shown herein without permission from THE TECHNICAL MATERIEL CORPORATION to the user. This drawing is loaned for mutual assistance and is subject to recall at any time.

Property of:
 THE TECHNICAL MATERIEL CORPORATION
 MAMARONECK, NEW YORK



NOTE
 FOR MASTER-SLAVE OPERATION, WHERE THE VOX HAS BEEN REMOVED FROM THE RACK FOR REPAIRS OR TEMPORARY USE ELSEWHERE, PART NO. UG-274/U SHOULD BE SUBSTITUTED FOR THE VOX BFO, IFO AND HFO TIE POINTS AS FOLLOWS-



ISSUE	ITEM	CHANGED FROM	DATE	CN. NO.	DRAFTS	CHECKER	ENG. APP.
TOLERANCES							
ALL DEC. DIM. ±		DRILL, PUNCH, COMMERCIAL STOCK					
OTHERS FRAC. DIM. ±		SIZES AND MANUFACTURERS					
		TOLERANCES ARE NOT INCLUDED.					

DDR-2A	PROJECT NO.	ASSY. NO.	DATE
USED ON			

REQ. ITEM	PART NO.	DESCRIPTION	SYMBOL
THE TECHNICAL MATERIEL CORP.			
MAMARONECK, NEW YORK			
CABINET CABLING DIAGRAM			
DDR-2A			
CDD2-17-54	A0J0	MECH. DES. APP.	
DRAWN		ELEC. DES. APP.	
CHECKED		FINAL APPROVAL	
SUPERCEDES CK-230		CK-239	

CK-239