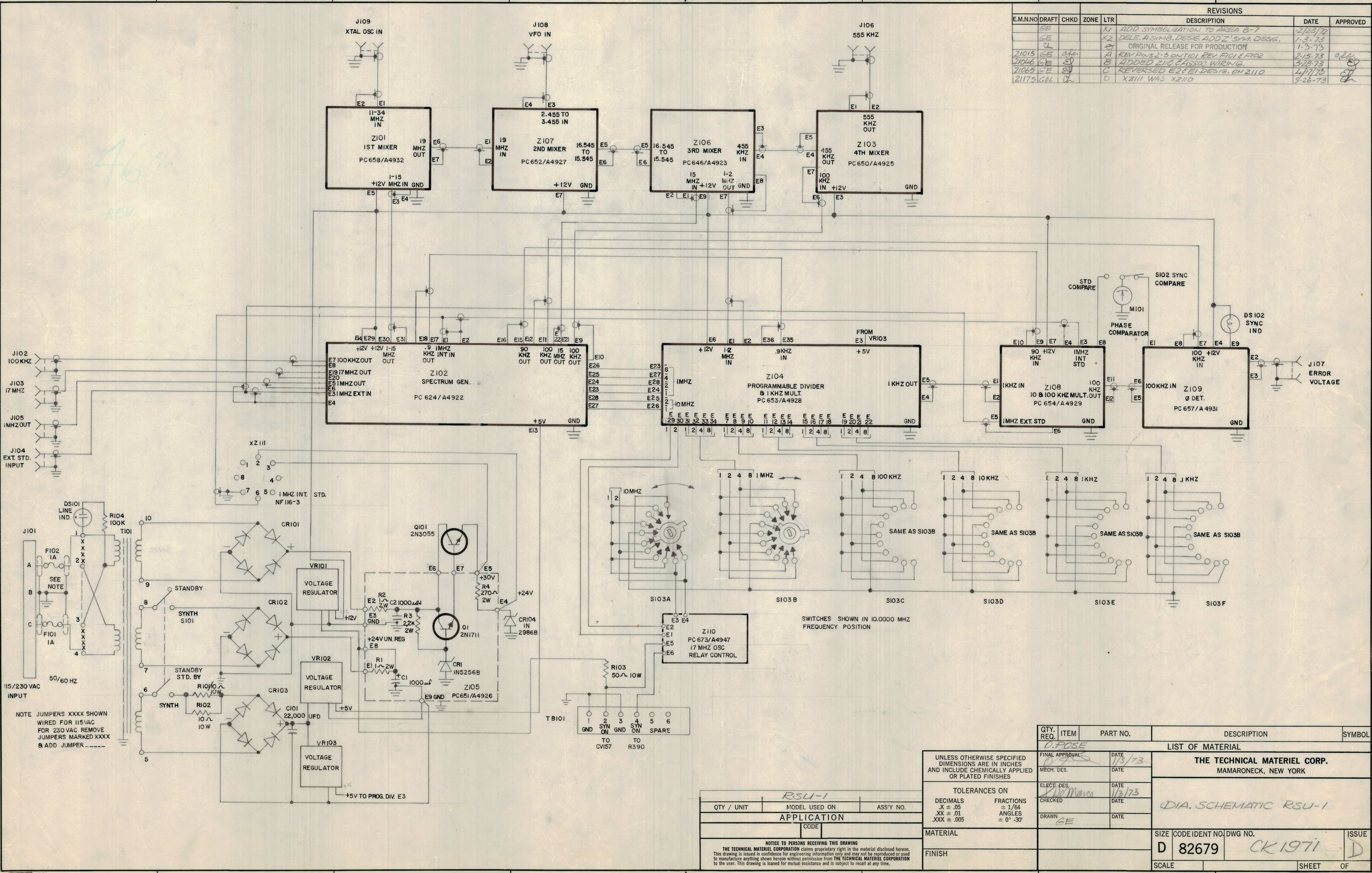


REVISIONS							
E.M.N.O	DRAFT	CHKD	ZONE	LTR	DESCRIPTION	DATE	APPROVED
GE			X1		ADD SYMBOLIZATION TO AREA B-7	12/23/72	
GE			X2		DELE. A SYMB. DESIG. ADD 'Z' SYM. DESIG.	1-3-73	
CL					ORIGINAL RELEASE FOR PRODUCTION	1-3-73	
Z1015	GE	aka	A		REV PINS 2-3 ON T101 REV F101 & F102	2-15-73	aka
Z1046	GE	SD	B		ADDED Z110 CASSOC WIRING	3-28-73	
Z1065	GE	SD	C		REVERSED E2 & E1 DESIG. ON Z110	4-17-73	
Z1175	CLL	DL	D		XZ111 WAS XZ110	9-26-73	



46%
REF.

NOTE JUMPERS XXXX SHOWN WIRED FOR 115VAC FOR 230VAC REMOVE JUMPERS MARKED XXXX & ADD JUMPER -----

RSU-1		
QTY / UNIT	MODEL USED ON	ASS'Y NO.
APPLICATION		
CODE		
NOTICE TO PERSONS RECEIVING THIS DRAWING		
THE TECHNICAL MATERIEL CORPORATION claims proprietary right in the material disclosed hereon. This drawing is issued in confidence for engineering information only and may not be reproduced or used to manufacture anything shown hereon without permission from THE TECHNICAL MATERIEL CORPORATION to the user. This drawing is loaned for mutual assistance and is subject to recall at any time.		

QTY. REQ.	ITEM	PART NO.	DESCRIPTION	SYMBOL
	LIST OF MATERIAL			
	FINAL APPROVAL	DATE		
	MECH. DES.	DATE		
	ELECT. DES.	DATE		
	CHECKED	DATE		
	DRAWN	DATE		

THE TECHNICAL MATERIEL CORP. MAMARONECK, NEW YORK		
DIA. SCHEMATIC RSU-1		
SIZE	CODE IDENT NO.	DWG NO.
D	82679	CK1971
SCALE	SHEET OF	

CK1971