

REVISIONS					
ZONE	LTR	DESCRIPTION	DATE	DRAFT	CHK'D
C		REDRAWN, WAS THREE SHEETS, "D" SIZE	2-22-71	RM	CE/ML

- T1**
1. K3-10 (134)
 2. K56-1 (113), T2-2 (J)
 3. T2-4 (145), T2-3 (165)
 5. CPTB-71 (71)

- T2**
1. K26-4 (171)
 2. T1-2 (J), T3-2 (J)
 3. T1-3 (185), K26-9 (146)
 4. K2-15 (143), T1-3 (145)
 5. K9-9 (170)
 6. K8-8 (144)

- T3**
1. CPTB-74 (188), T3-3 (J)
 2. T2-2 (J), K52-1 (142)
 3. T3-1 (J), K22-12 (169)
 5. CPTB-73 (168)

- K5**
1. K7-1 (29), K22-1 (139)
 4. K4-15 (51)
 8. CPTB-6 (6)
 9. K8-16 (43)
 11. CPTB-9 (9), K26-10 (135)
 12. K8-5 (46)
 15. CPTB-65 (187)
 16. CPTB-66 (188)

- K7**
1. K8-1 (28), K5-1 (29)
 4. CPTB-14 (14)
 6. CPTB-19 (19)
 7. K6-16 (53)
 8. K6-9 (37)
 9. K1-12 (36)
 15. D9-A (54)
 16. K6-12 (39)

- K22**
1. K5-1 (39), K26-1 (97)
 4. K25-13 (98), K22-12 (J)
 12. T3-3 (169), K22-4 (J)
 13. K27-10 (99)

- K26**
1. K27-1 (160), K22-1 (97)
 4. T2-1 (171), K26-12 (J)
 6. CPTB-29 (86)
 7. K20-5 (80)
 9. T2-3 (146), K30-8 (101)
 10. K5-11 (135)
 12. K26-4 (J), CPTB-28 (85)
 13. K50-7 (196), K10-14 (194)

- K50**
1. K51-1 (70), K53-1 (139)
 4. CPTB-46 (120), K50-12 (J)
 9. CPTB-41 (115)
 10. K32-13 (140), K52-10 (141)
 12. K50-4 (J)
 13. K51-13 (147), K54-13 (148)
 6. K32-12 (137)
 7. K26-13 (196)
 15. K8-8 (195)
 16. D57-K (198)

- K52**
1. T3-2 (142), K53-1 (149)
 4. CPTB-48 (122), K52-12 (J)
 6. K52-12 (J)
 7. K32-12 (150), CPTB-63 (63)
 9. CPTB-61 (151)
 10. K50-10 (141), K53-10 (152)
 12. K52-4 (J), K52-6 (J)
 13. K51-13 (153), K53-13 (154)

- K6**
1. K9-1 (26), K8-1 (27)
 4. CPTB-13 (13)
 9. CPTB-5 (5), K7-8 (37)
 10. D8-A (59)
 11. K2-12 (38)
 12. CPTB-4 (4), K7-16 (39)
 15. CPTB-10 (10)
 16. K7-7 (33), K20-9 (133)

- K8**
1. K6-1 (27), K7-1 (28)
 4. CPTB-15 (15)
 5. K9-10 (45), K5-12 (46)
 6. K9-15 (47)
 8. K50-15 (195), T2-6 (144)
 9. K4-10 (49)
 12. CPTB-7 (7)
 13. K3-12 (42), K8-16 (J)
 15. K9-6 (48)
 16. K8-13 (J), K5-9 (43)

- K25**
1. CPTB-34 (90)
 4. CPTB-40 (96)
 9. CPTB-38 (94)
 10. CPTB-37 (93)
 12. CPTB-23 (87)
 13. K22-4 (98)

- K27**
1. K31-1 (104), K26-1 (100)
 4. K21-9 (81)
 5. K30-8 (105), K51-6 (74)
 6. CPTB-25 (75)
 9. CPTB-39 (95)
 10. K22-13 (99)

- K51**
1. K50-1 (70), K54-1 (69)
 4. K21-9 (81)
 6. K27-5 (74), K32-6 (75)
 7. K32-7 (73)
 9. CPTB-58 (58)
 10. K53-10 (155), K54-10 (156)
 12. K51-4 (J)
 13. K50-13 (147), K52-13 (153)

- K53**
1. K50-1 (39), K52-1 (49)
 4. K53-12 (J), CPTB-47 (121)
 9. CPTB-59 (52)
 10. K52-10 (152), K51-10 (155)
 12. K53-4 (J)
 13. K52-13 (154), K31-4 (138)

- K9**
1. K10-1 (25), K6-1 (26)
 4. CPTB-16 (16)
 5. D11-A (56)
 6. K8-15 (48)
 9. CPTB-8 (8), T2-5 (170)
 10. K4-12 (44), K8-5 (45)
 12. K21-12 (190)
 13. K10-9 (191), K15 (40)
 15. K8-6 (47)
 16. D12-A (61)

- K10**
1. K2-1 (24), K9-1 (25)
 4. D9-K (60)
 8. K1-13 (31)
 9. CPTB-11 (11), K10-15 (J)
 14. K26-13 (194)
 15. K9-13 (191), K10-9 (J)

- K30**
1. K20-1 (106), K31-1 (107)
 4. CPTB-36 (92)
 8. K21-5 (103), K26-9 (101)
 9. K31-15 (108)
 13. K56-13 (109), K31-10 (110)

- K31**
1. K30-1 (107), K27-1 (104)
 4. K53-13 (138), K31-10 (J)
 9. K56-10 (162), CPTB-35 (91)
 10. K30-13 (110), K31-4 (J)
 15. K30-9 (108)
 16. CPTB-32 (89)

- K54**
1. K51-1 (69), K55-1 (68)
 4. CPTB-50 (124), K54-12 (J)
 9. CPTB-56 (129)
 10. K51-10 (157), K55-10 (157)
 12. K54-4 (J)
 13. K50-13 (148), K55-13 (158)

- K55**
1. K54-1 (68), K47-1 (67)
 4. K55-12 (J), CPTB-51 (128)
 9. CPTB-57 (130)
 10. K54-10 (157), K49-10 (159)
 12. K55-4 (J)
 13. K54-13 (158), K49-13 (160)

- K1**
1. CPTB-20 (20), K3-1 (21)
 4. CPTB-2 (2), K1-12 (J)
 12. K1-4 (J), K7-9 (36)
 13. K2-13 (32), K10-8 (31)
 15. K9-13 (40), K2-15 (41)
 16. CPTB-17 (17)

- K3**
1. K1-1 (21), K4-1 (22)
 4. D6-A (55), K3-12 (J)
 6. K4-9 (50)
 7. CPTB-12 (12)
 9. K4-15 (35)
 10. K4-16 (30), T1-1 (134)
 12. K3-4 (J), K8-13 (42)
 13. K4-13 (34), CPTB-62 (62)

- K**

- K20**
1. K21-1 (111), K30-1 (106)
 4. CPTB-22 (68)
 5. K26-7 (80), K32-6 (79)
 6. CPTB-26 (84)
 9. K6-16 (133)
 19. K56-10 (112), K32-13 (184)

- K32**
1. CPTB-60 (37), K49-1 (64)
 4. CPTB-52 (52), D57 (K) (76)
 6. K20-5 (79), K51-6 (75)
 7. K51-7 (73), CPTB-44 (118)
 - 10.
 12. K52-7 (150), K50-6 (197)
 13. K20-10 (180), K50-10 (140)
 14. K21-9 (82)
 15. K21-8 (83)

- K**

- K2**
1. K4-1 (23), K10-1 (24)
 4. CPTB-3 (3), K2-12 (J)
 12. K2-4 (J), K6-11 (38)
 13. K1-13 (32), K4-13 (33)
 15. K1-15 (41), T2-4 (143)
 16. CPTB-18 (18)

- K4**
1. K3-1 (22), K2-1 (23)
 4. K4-12 (J), D5-A (56)
 9. K3-6 (50), CPTB-72 (72)
 10. CPTB-11 (11), K8-9 (49)
 12. K4-4 (J), K9-10 (44)
 13. K2-13 (33), K3-13 (34)
 15. K3-9 (35), K5-4 (51)
 16. D5-K (57), K3-10 (30)

- K56**
1. T1-2 (113), K21-1 (114)
 4. K56-12 (J), CPTB-30 (87)
 10. K20-10 (112), K31-9 (102)
 12. K56-4 (J)
 13. K30-13 (108)
 9. CPTB-31 (88)

- K21**
1. K56-1 (114), K20-1 (111)
 4. CPTB-21 (67)
 8. K32-15 (83), CPTB-24 (70)
 9. K27-4 (81), K32-14 (82)
 11. CPTB-27 (192)
 12. K9-12 (190)

- K47**
1. K55-1 (67), K49-1 (66)
 4. D58-K (77), CPTB-43 (117)
 4. K47-12 (J)
 9. CPTB-53 (126)
 10. K49-10 (161), CPTB-42 (116)
 12. K47-4 (J)
 13. K49-13 (162), CPTB-55 (128)

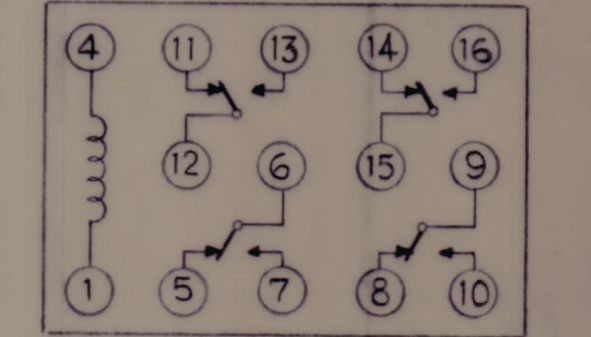
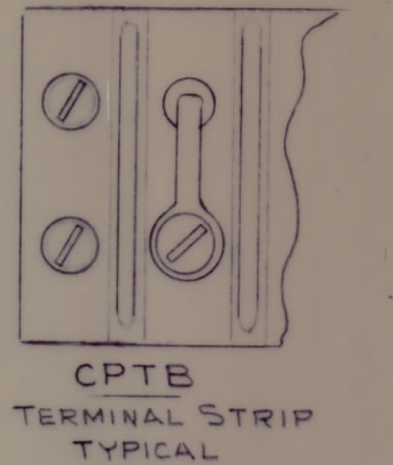
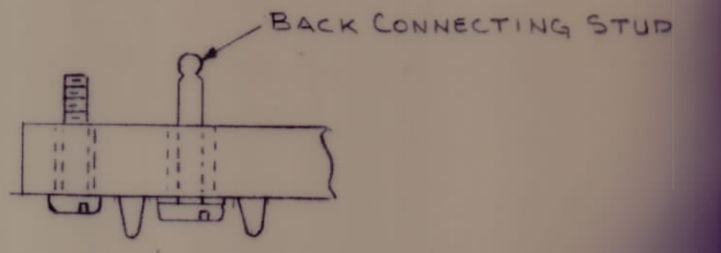
- K49**
1. K32-1 (64), K47-1 (66)
 4. CPTB-45 (115), K49-12 (J)
 9. CPTB-54 (127)
 10. K47-10 (161), K55-10 (155)
 12. K49-4 (J)
 13. K55-13 (163), K47-13 (162)

20	K1-1(20)
19	K7-6(19)
18	K2-16(18)
17	K1-16(17)
16	K9-4(16)
15	K8-4(15)
14	K7-4(14)
13	K6-4(13)
12	K8-7(12)
11	K4-10(11)
10	K6-15(10)
9	K5-11(9)
8	K9-9(8)
7	K8-12(7)
6	K5-8(6)
5	K6-9(5)
4	K6-12(4)
3	K2-4(3)
2	K1-4(2)
1	K10-9(1)

40	K25-4(96)
39	K27-9(95)
38	K25-9(94)
37	K25-10(93)
36	K30-4(92)
35	K31-9(91)
34	K25-1(90)
33	
32	K31-16(89)
31	K56-9(88)
30	K56-4(87)
29	K26-6(86)
28	K26-12(85)
27	K21-11(192)
26	K20-6(84)
25	K27-6(75)
24	K21-8(70)
23	K25-12(62)
22	K20-4(68)
21	K21-4(67)

60	C1-1(163)
59	K32-1(167)
58	K53-9(132)
57	K51-9(131)
56	K55-9(130)
55	K54-9(129)
54	K47-13(128)
53	K47-9(126)
52	K32-4(52)
51	K55-4(125)
50	K54-4(124)
49	K53-4(123)
48	K52-4(122)
47	K51-4(121)
46	K50-4(120)
45	K49-4(119)
44	K32-7(118)
43	K47-4(117)
42	K47-10(116)
41	K50-9(115)

80	
79	
78	
77	
76	
75	
74	T3-1(183)
73	T3-5(168)
72	K4-9(72)
71	T1-5(71)
70	
69	
68	
67	
66	K516(188)
65	K515(187)
64	D57-A(64)
63	K52-7(63)
62	K3-13(62)
61	K52-9(61)

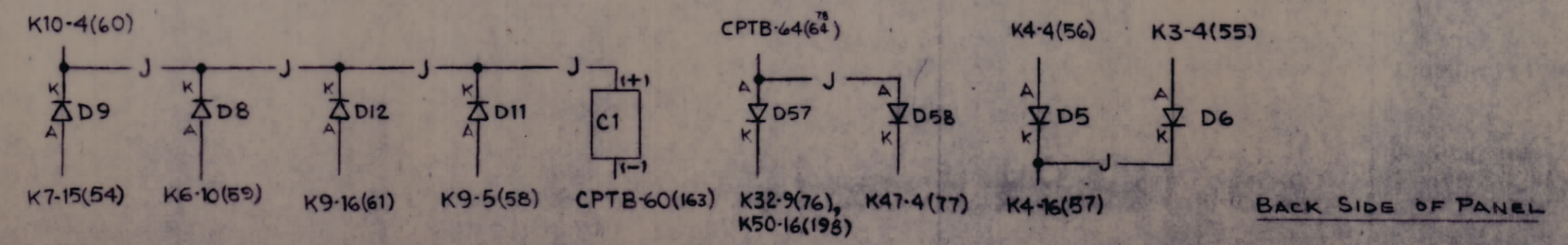


CPTB

CPTB

CPTB

CPTB



QTY REQ	QTY REQ	QTY REQ	ITEM	PART NO.	MANUFACTURER	DESCRIPTION
PARTS LIST						
THE TMC SYSTEMS AND POWER CORPORATION SPRINGFIELD, VIRGINIA						
DRAWN MITCH DATE 9-28-70						
CHECKED DATE						
D. ENG. DATE						
P. ENG. DATE						
P. MGR. DATE						
CHIEF, ENG. DEPT. DATE						
LAST No. ASSIGNED 198						
SIZE	CODE IDENT NO	DWG. NO.				
D	24146	CK1724				
SCALE			SHEET OF			

INTERPRET DRAWING PER LISTED DOCUMENTS

UNLESS OTHERWISE SPECIFIED DIMENSIONS ARE IN INCHES AND INCLUDE CHEMICALLY APPLIED OR PLATED FINISHES REMOVE ALL BURRS AND SHARP EDGES

TOLERANCES ON FRACTIONS ANGLES DECIMALS

MATERIAL

FINISH

NOTICE TO PERSONS RECEIVING THIS DRAWING THE TMC SYSTEMS AND POWER CORPORATION claims proprietary right in the material disclosed herein. This drawing is issued in confidence for engineering information only and may not be reproduced or used to manufacture anything shown herein without permission from THE TMC SYSTEMS AND POWER CORPORATION to the user. This drawing is loaned for mutual assistance and is subject to recall at any time.