

5

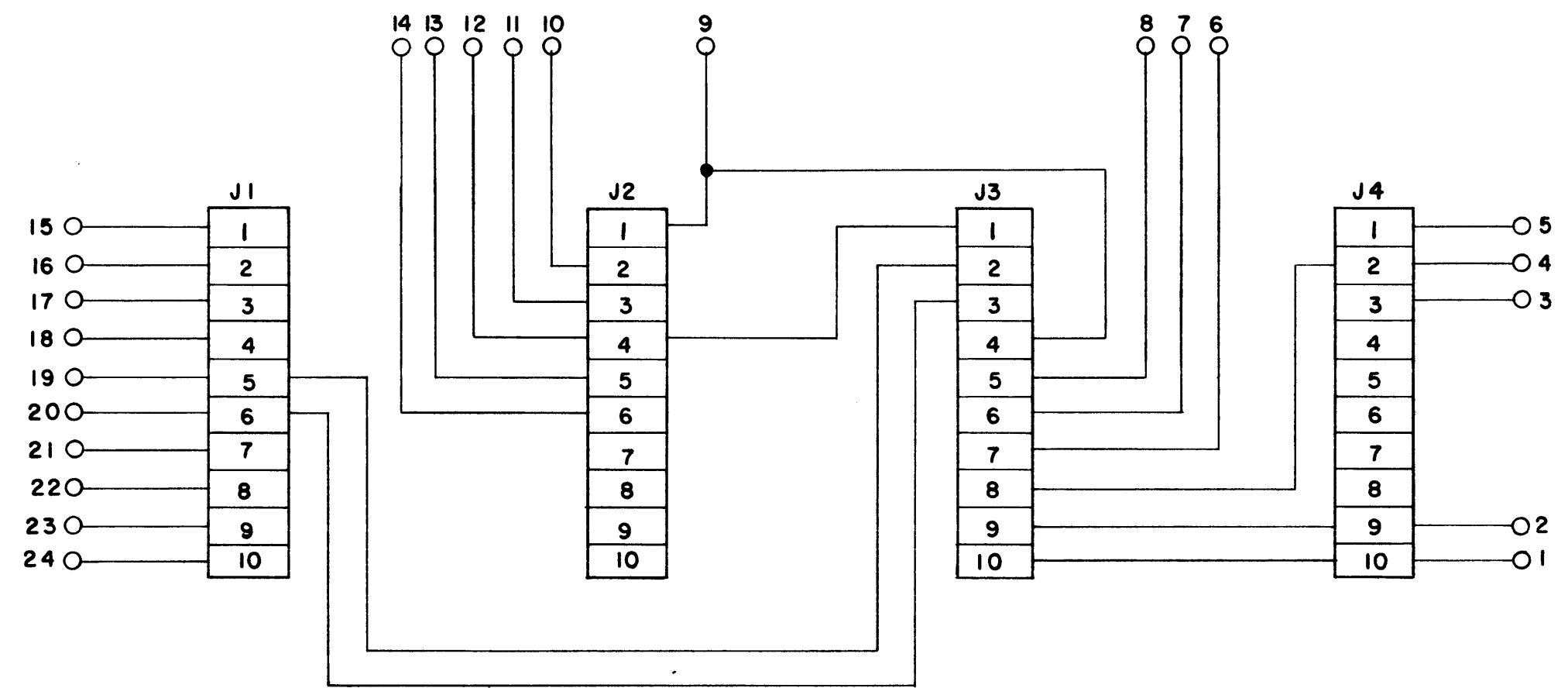
4

3

2

1

REVISIONS						
ZONE	LTR	DESCRIPTION	DATE	E.M.N.NO	DRAFT	CHKD APPD
	X	EXP RELEASE	8/11/69	✓	KD	
	X <sub>i</sub>	REVISED & UPDATED	8/21/69		KD	
	∅	ORIGINAL RELEASE	9/13/69		W	



A4778 / PC 510

REQ'D	ITEM	PART NUMBER	DESCRIPTION	SYM.
			LIST OF MATERIAL	
<p><i>POSEM</i></p> <p>THE TECHNICAL MATERIEL CORP. MAMARONECK, NEW YORK</p> <p>DIAGRAM SCHEMATIC REC IF</p>				
FINISH APPROVAL <i>[Signature]</i> MECH. DES.		DATE 9/13/69	THE TECHNICAL MATERIEL CORP. MAMARONECK, NEW YORK DIAGRAM SCHEMATIC REC IF	
ELECT. DES. <i>[Signature]</i> CHECKED <i>[Signature]</i> DRAWN <i>[Signature]</i>		DATE 8/22/69	DATE 8/22/69	DATE 8/11/69
MATERIAL FINISH		SIZE B	CODE IDENT. NO. 82679	DWG NO. CK 1658
		SCALE NONE	SHEET	OF

MTR( ) - 150		
QTY / UNIT	MODEL USED ON	ASS'Y NO.
APPLICATION		
CODE		
NOTICE TO PERSONS RECEIVING THIS DRAWING THE TECHNICAL MATERIEL CORPORATION claims proprietary right in the material disclosed hereon. This drawing is issued in confidence for engineering information only and may not be reproduced or used to manufacture anything shown hereon without permission from THE TECHNICAL MATERIEL CORPORATION to the user. This drawing is loaned for mutual assistance and is subject to recall at any time.		

UNLESS OTHERWISE SPECIFIED DIMENSIONS ARE IN INCHES AND INCLUDE CHEMICALLY APPLIED OR PLATED FINISHES

DECIMALS: .X ± .05, .XX ± .01, .XXX ± .005  
 FRACTIONS: 1/64  
 TOLS.: ANGLES 0° - 30'  
 MATERIAL: FINISH

5

4

3

2

1