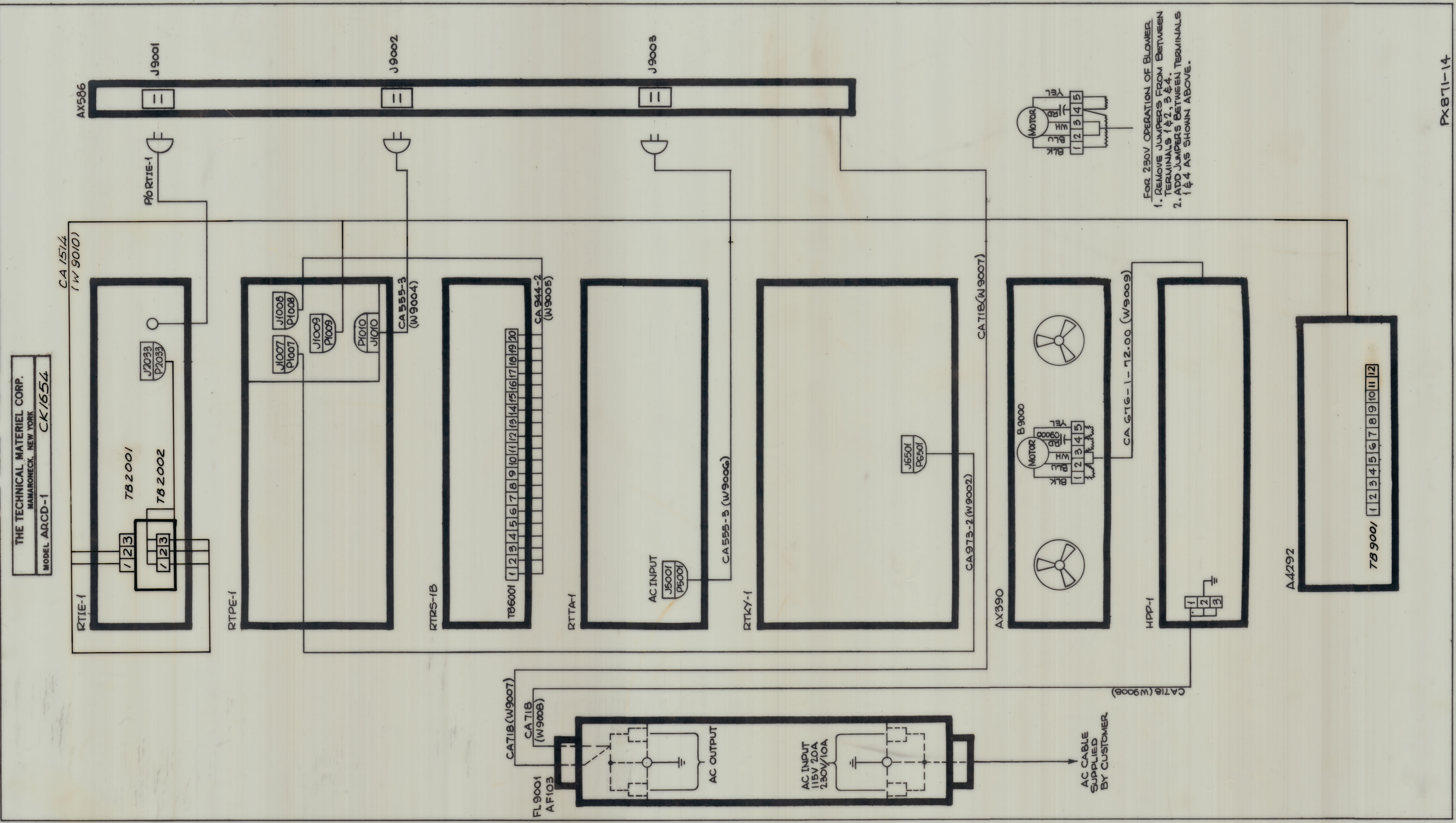


REVISIONS						
ZONE	SYM	DESCRIPTION	DATE	E.M.N. NO.	DRAFT	CHKD
		ORIGINAL RELEASE FOR PRODUCTION	8/5/63			GE



FOR 230V OPERATION OF BLOWER.  
 1. REMOVE JUMPERS FROM BETWEEN TERMINALS 1 & 2, 3 & 4.  
 2. ADD JUMPERS BETWEEN TERMINALS 1 & 4 AS SHOWN ABOVE.

THE TECHNICAL MATERIEL CORP.  
 MAMARONECK, NEW YORK  
 MODEL ARCD-1 CK1654

THIS SCHEMATIC IS FOR  
 ARCD-1 (SP)  
 SERIAL N°S: 10808, 10809  
 TMC S.O. # 514356

FOR LAMINATION DETAILS  
 REFER TO PX871-14

NOTES

Q'TY./UNIT	MODEL USED ON	ASBY. NO.
	ARCD-1 (SP)	

UNLESS OTHERWISE SPECIFIED  
 DIMENSIONS ARE IN INCHES AND INCLUDE  
 CHEMICALLY APPLIED OR PLATED FINISHES

DECIMALS: .X ± .08, .XX ± .01, .XXX ± .008  
 FRACTIONS: ± 1/64, ANGLES: ± 0° 30'

MATERIAL FOR LAMINATING REFER TO PX871		THE TECHNICAL MATERIEL CORP. MAMARONECK, NEW YORK	
TITLE: WIRING DIAGRAM ARCD-1	DATE: 8/5/63	FINAL APPROVAL: [Signature]	DATE: 8/5/63
DRAWN: G. EVANGELIST	CHECKED: [Signature]	ELECT. DES.:	DATE:
CK1654		REV. LTR.	

REDUCE TO 10 1/2"

CK1654

G  
F  
E  
D  
C  
B  
A

11 10 9 8 7 6 5 4 3 2 1

TMC FORM 111 11 10 9 8 7 6 5 4 3 2 1 REPROVAL NO. 4408