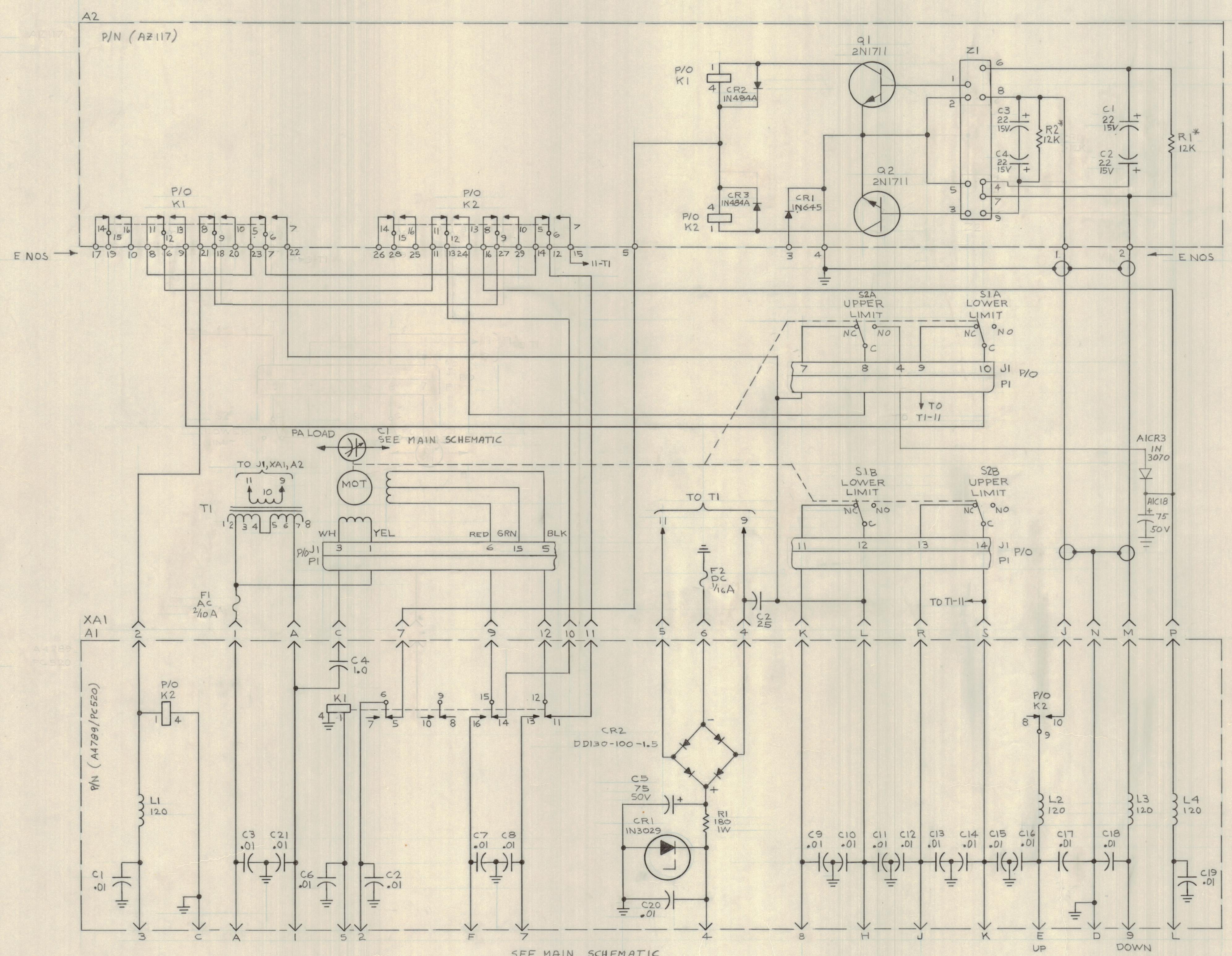


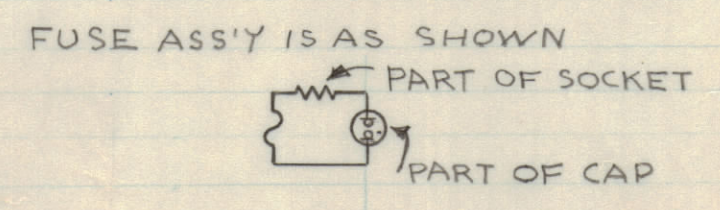
REVISIONS							
E.M.N.NO	DRAFT	CHKD	ZONE	LTR	DESCRIPTION	DATE	APPROVED
				X	EXP. RELEASE	10/3/69	
				X <sub>1</sub>	REV S1 & S2 SYN.	10/27/69	
				X <sub>2</sub>	ADD A1C18, A1C23	11/7/69	
				X <sub>3</sub>	K1 PINS 1-4 REVERSED	2/26/70	
					ORIGINAL RELEASE FOR PRODUCTION	3/24/70	



\* NOMINAL VALUE. ACTUAL VALUE SET AT FACTORY DURING CALIBRATION.

LAST SYMBOLS		
A1	A2	C2
A1C22	A2C4	F2
A1C3	A2C3	J1
A1K2	A2E29	P1
A1L4	A2K2	S2
A1R1	A2Q2	T1
A1XK2	A2R2	W1
	A2XK2	XA1
	A2Z1	XF2

NOTE  
 PARTIAL DESIGNATION SHOWN. PREFIX WITH SUBASSEMBLY DESIGNATION  
 UNLESS OTHERWISE SPECIFIED  
 ALL RESISTANCE VALUES ARE IN OHMS, 1/4 WATT  
 ALL CAPACITORS ARE IN μF  
 ALL INDUCTORS ARE IN μH



REDRAWN FROM X9 SKETCH W/CHANGES

REF CK1643.1644

QTY. REQ.	ITEM	PART NO.	DESCRIPTION	SYMBOL
	LIST OF MATERIAL			
	THE TECHNICAL MATERIEL CORP. MAMARONECK, NEW YORK			
	DIAGRAM SCHEMATIC			
	LOAD CAPACITOR ASS'Y A703			
	SIZE	CODE IDENT NO.	DWG NO.	ISSUE
	D	82679	CK 1628	
	SCALE		SHEET	OF

TOLERANCES ON	
DECIMALS	FRACTIONS
.X ± .05	± 1/64
.XX ± .01	ANGLES
.XXX ± .005	± 0° - 30'

QTY / UNIT	MODEL USED ON	ASS'Y NO.
	GPTR -10KYA	AX5084
APPLICATION		
CODE		
MATERIAL		
FINISH		

NOTICE TO PERSONS RECEIVING THIS DRAWING  
 THE TECHNICAL MATERIEL CORPORATION claims proprietary right in the material disclosed herein. This drawing is issued in confidence for engineering information only and may not be reproduced or used to manufacture anything shown herein without permission from THE TECHNICAL MATERIEL CORPORATION to the user. This drawing is loaned for mutual assistance and is subject to recall at any time.