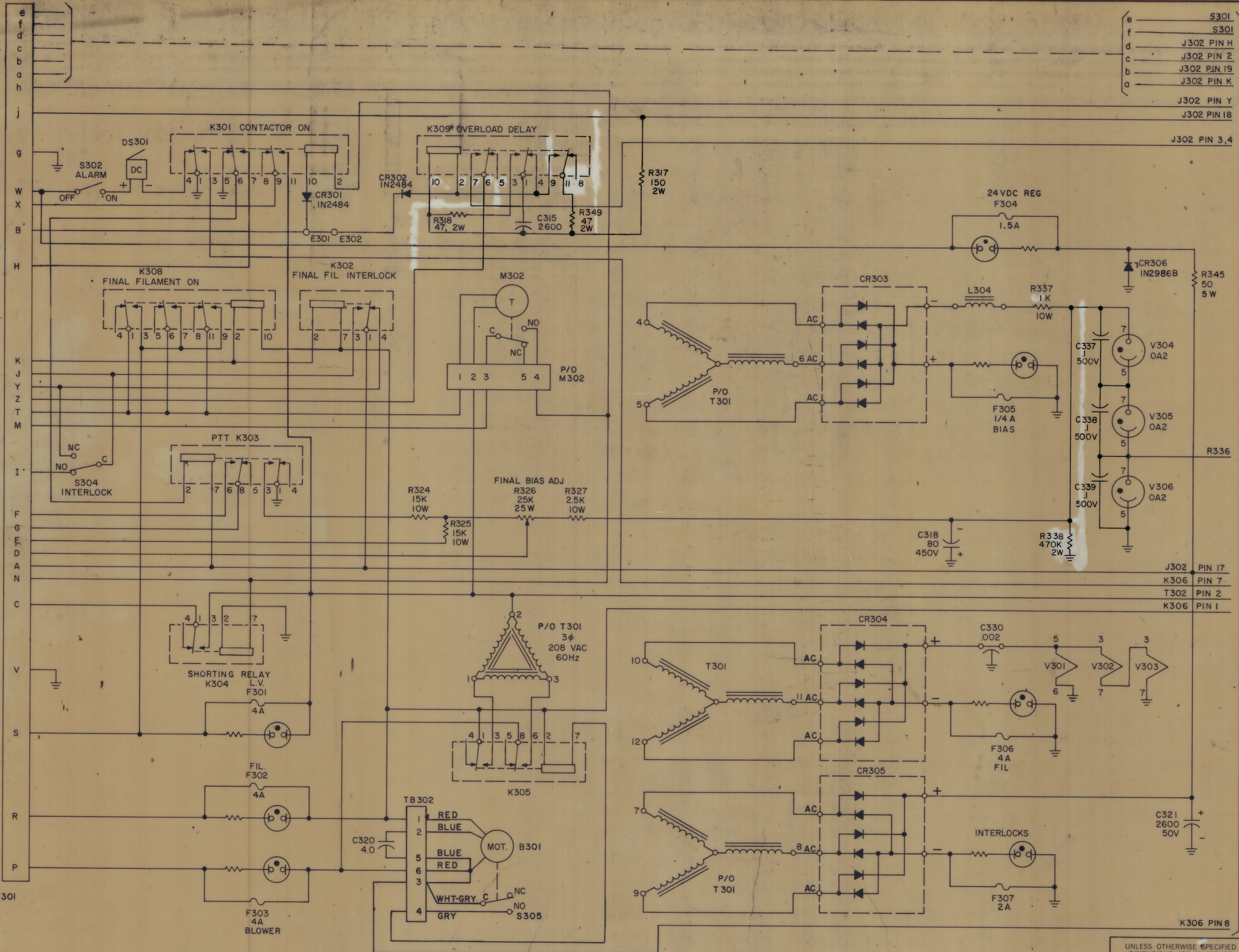


REVISIONS						
ZONE	LTR	DESCRIPTION	DATE	E.M.N.NO	DRAFT	CHKD
	X	EXP. RELEASE	7-22-68			
	XI	SEE SHEET 2	8-13-68			
		ORIGINAL RELEASE FOR PRODUCTION	9-10-69			
	A	REVISED & UPDATED	5-13-60	19423	GE	



SEE SHEET 2 OF 2

QTY. REQ.	ITEM	PART NO.	DESCRIPTION	SYMBOL
			<b>F. BUDETTI</b>	
LIST OF MATERIAL				
THE TECHNICAL MATERIEL CORP. MAMARONECK, NEW YORK				
<b>DIAGRAM SCHEMATIC (DRIVER)</b>				
SIZE		CODE IDENT. NO.	DWG. NO.	
D		82679	CK 1539	
SCALE				
SHEET 1 OF 2				

UNLESS OTHERWISE SPECIFIED DIMENSIONS ARE IN INCHES AND INCLUDE CHEMICALLY APPLIED OR PLATED FINISHES

TOLERANCES ON

DECIMALS	FRACTIONS
X ± .05	± 1/64
XX ± .01	ANGLES
.XXX ± .005	± 0°-30'

I	<b>BCT-10KA (P-15)</b>
QTY / UNIT	MODEL USED ON ASS'Y NO.
APPLICATION	
CODE	

NOTICE TO PERSONS RECEIVING THIS DRAWING

THE TECHNICAL MATERIEL CORPORATION claims proprietary right in the material disclosed herein. This drawing is issued in confidence for engineering information only and may not be reproduced or used to manufacture anything shown herein without permission from THE TECHNICAL MATERIEL CORPORATION to the user. This drawing is loaned for mutual assistance and is subject to recall at any time.

8 7 6 5 4 3 2 1

e f d c b a h j g w x b h k j y z t m i f g e d a n c v s r p

J301

J302 PIN 3,4

J302 PIN 17

K306 PIN 7

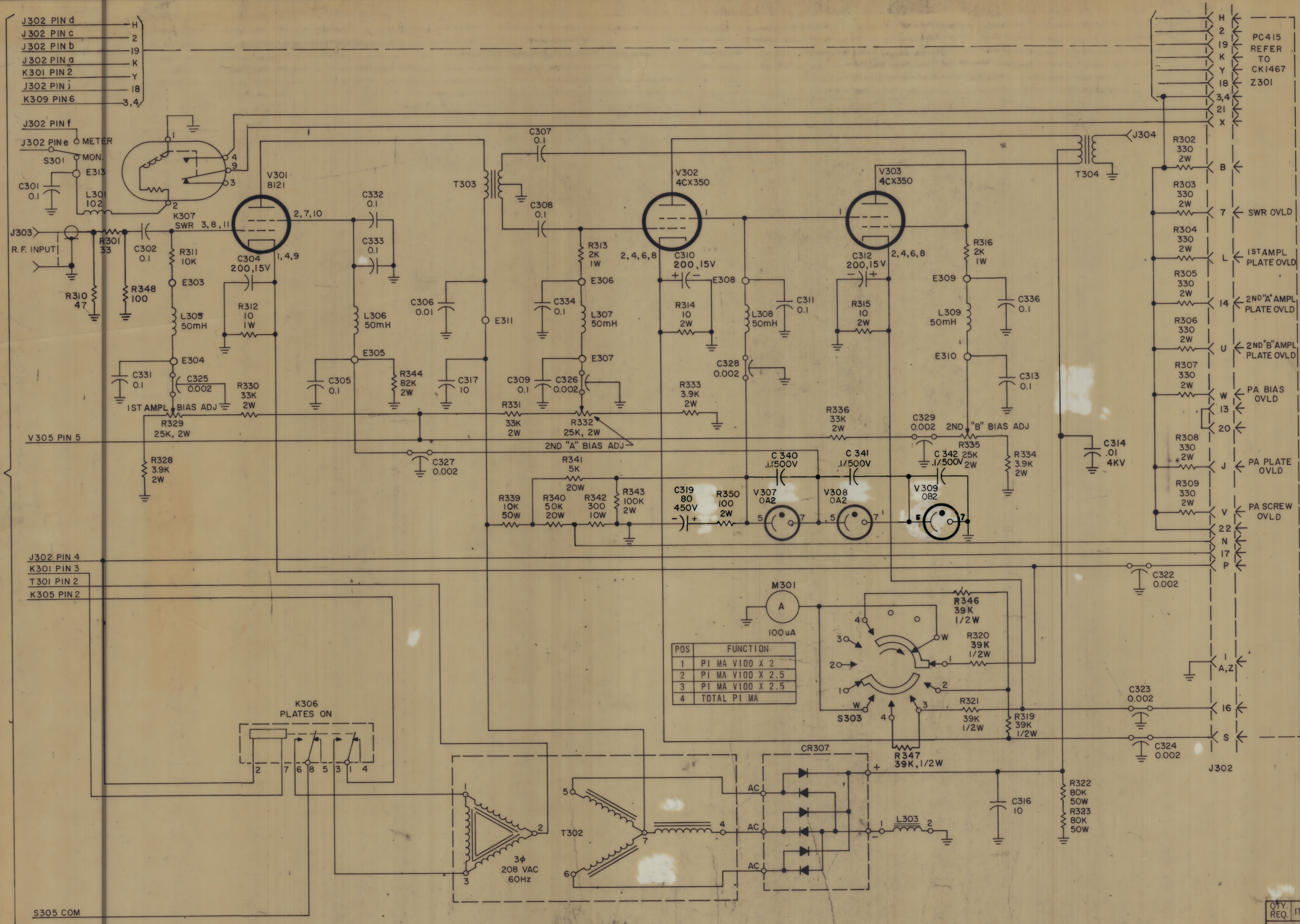
T302 PIN 2

K306 PIN 1

K306 PIN 8

8 7 6 5 4 3 2 1



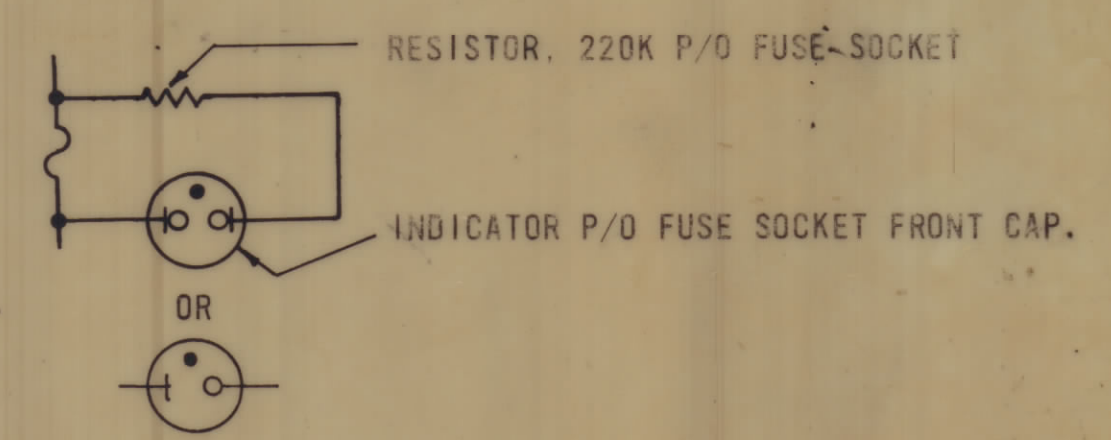


REVISIONS						
ZONE	LTR	DESCRIPTION	DATE	E.M.N. NO.	DRAFT	CHKD APPD
X		EXP. RELEASE	7-22-65			
X1		DELETED L302 & E312	8-13-68			
B		ORIGINAL RELEASE FOR PRODUCTION	4-9-69			
A		REVISED & UPDATED	5-14-69	19423		

300 SERIES	
LAST SYMBOL	MISSING SYMBOL
B301	B300
C342	C300, 303, 335
CR307	CR300
DS301	DS300
E313	E300, 312
F307	F300
K309	K300
L309	L300, 302
M302	M300
R350	
S305	S300
T304	T300
V309	V300
J302	J300
TB302	TB300, 301
Z301	

- UNLESS OTHERWISE SPECIFIED:
1. ALL RESISTORS ARE IN OHMS.
  2. ALL CAPACITORS ARE IN MICROFARADS.
  3. ALL INDUCTANCE VALUES ARE IN MICROHENRIES.

FUSE NOTES:



POS	FUNCTION
1	PI MA V100 X 2
2	PI MA V100 X 2.5
3	PI MA V100 X 2.5
4	TOTAL PI MA

D

C

B

A

D

C

B

A

QTY. REQ.	ITEM	PART NO.	DESCRIPTION	SYMBOL
	F. BUDETTI		LIST OF MATERIAL SK 3290 CK 683	
<p>UNLESS OTHERWISE SPECIFIED DIMENSIONS ARE IN INCHES AND INCLUDE CHEMICALLY APPLIED OR PLATED FINISHES</p>				
<p>TOLERANCES ON</p>				
DECIMALS		FRACTIONS		
.X ± .05		± 1/64		
.XX ± .01		ANGLES ± 0' - 30'		
.XXX ± .005				
<p>FINAL APPROVAL: <i>[Signature]</i> DATE: 7/23/68</p> <p>MECH. DES: DATE: 7-22-65</p> <p>ELECT. DES: DATE: 7-23-65</p> <p>CHECKED: <i>[Signature]</i> DATE: 7-23-65</p> <p>DRAWN: <i>[Signature]</i> DATE: 7-23-65</p>				
<p>THE TECHNICAL MATERIEL CORP. MAMARONECK, NEW YORK</p>				
<p>DIAGRAM SCHEMATIC (DRIVER)</p>				
SIZE		CODE IDENT. NO.	DWG NO.	ISSUE
D		82679	CK 1539	A
SCALE: — SHEET 2 OF 2				

APPLICATION		
CODE	MODEL USED	ASS'Y NO.
	BCT-10KA (P-15)	

NOTICE TO PERSONS RECEIVING THIS DRAWING

THE TECHNICAL MATERIEL CORPORATION claims proprietary right in the material disclosed hereon. This drawing is issued in confidence for engineering information only and may not be reproduced or used to manufacture anything shown herein without permission from THE TECHNICAL MATERIEL CORPORATION to the user. This drawing is loaned for mutual assistance and is subject to recall at any time.