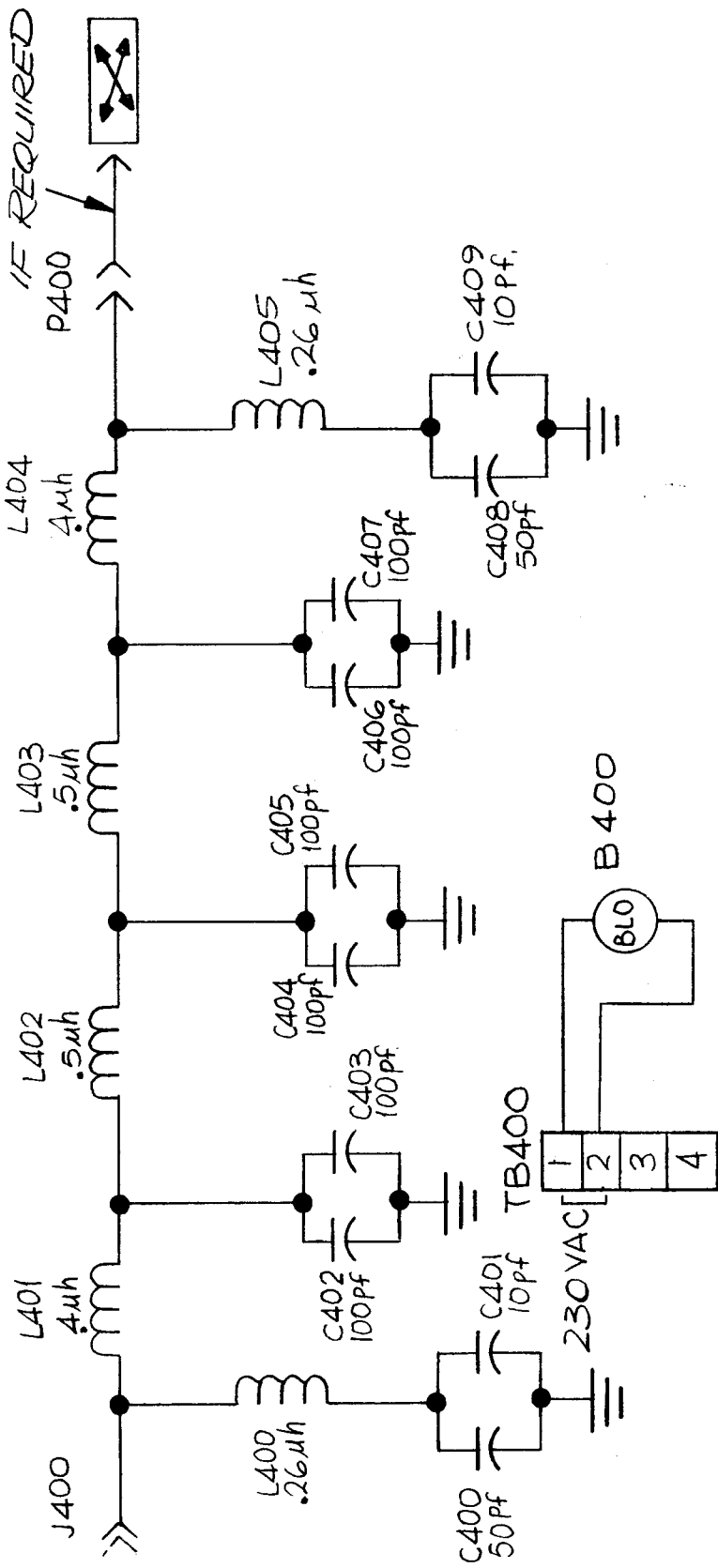


CK1209 B

USED ON
 MODEL LPFA-10K
 ASS'Y. NO. 9-14-66
 DATE

LOOSE ITEM
 CP 400
 IF REQUIRED



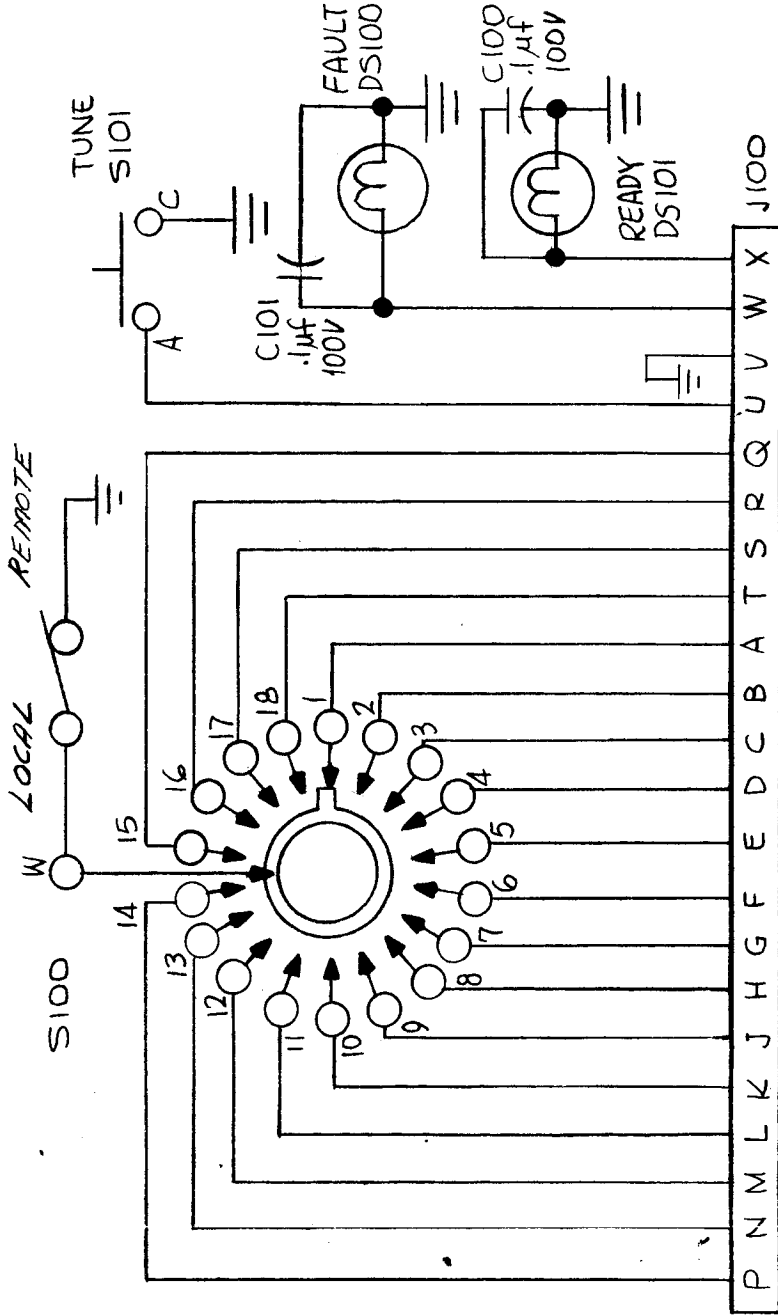
REQ. PER UNIT	MODEL	ASS'Y. NO.	DATE	SYMBOL
1	LPFA-10K	9-14-66		B
FIBUDETTI DESCRIPTION				
THE TECHNICAL MATERIEL CORP. MAMARONECK. NEW YORK				
DIAGRAM, SCHEMATIC				
LOW PASS FILTER, FIXED.				
PART NO.		DRAWN		
STOCK SIZE		CHECKED		
MATERIAL		ELEC. DES. APP.		
TYPE & TEMPER		MECH. DES. APP.		
HEAT TREAT. SPEC.		FIN. APPROV.		
FINISH & SPEC. NO.		CK1209 B		
SYM	DESCRIPTION	DATE	CH. NO.	DRAFTS
B	RELOC. DIR. COUPLER	8/24/72	20821	GE
A	BLOWER CIRCUITRY ADDED.	5.11.67	18208	WH
Ø	ORIGINAL RELEASE FOR PRODUCTION	5/3/67	Ø	CV
X	EXP. RELEASE	9-13-66	X	CV
SCALE				
UNLESS OTHERWISE SPECIFIED DIMENSIONS ARE IN INCHES AND INCLUDE CHEMICALLY APPLIED OR PLATED FINISHES				
TOLERANCES				
DECIMALS .X ±.05 .XX ±.01 .XXX ±.005				
FRACTIONS ± 1/64 ANGLES ± 0° 30'				
CODE				

REG. PER UNIT 1	USED ON	
	MODEL AXG31	DATE 9-13-66

CK1212 A

S100 TRANSMITTER FREQUENCY

POS.	FUNCTION	MHZ
1	2-2.5	
2	2.5-3	
3	3-4	
4	4-5	
5	5-6	
6	6-7	
7	7-9	
8	9-11	
9	11-13	
10	13-15	
11	15-17	
12	17-19	
13	19-22	
14	22-24	
15	24-26	
16	26-28	
17	28-29	
18	29-30	

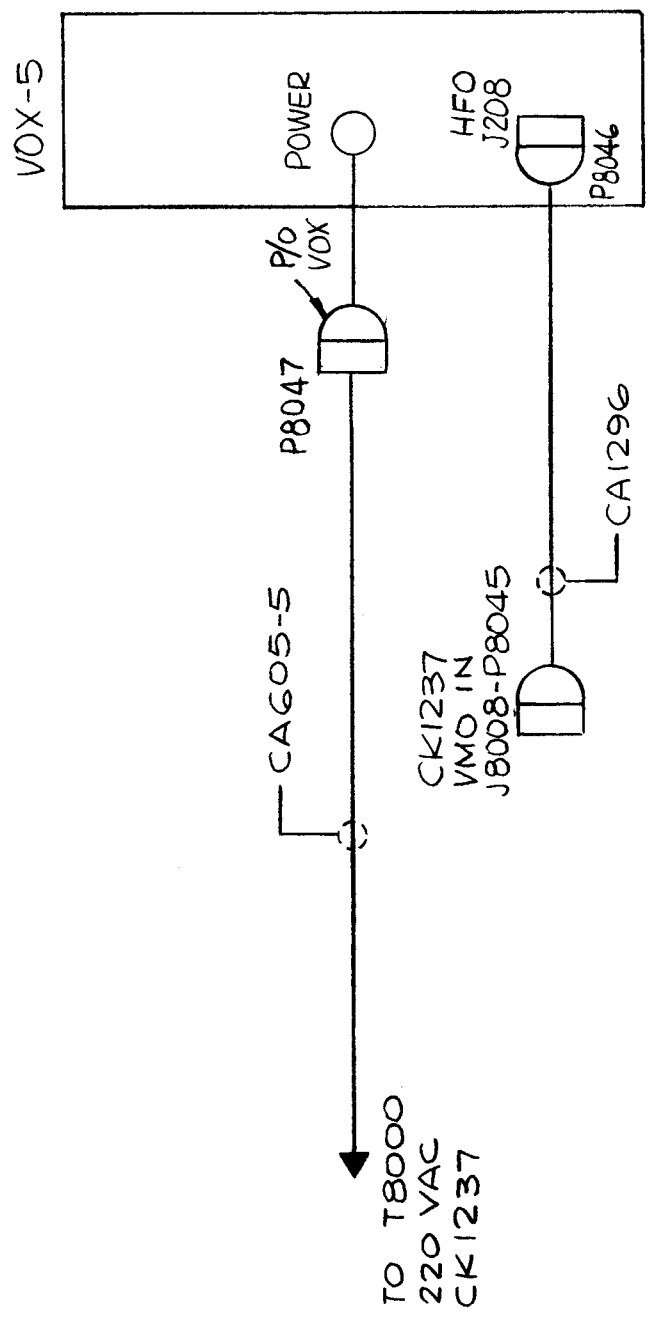


SYM	DESCRIPTION	DATE	CH. NO.	DRAFTS	CHECKER	ENG. APP.	SCALE	TOLERANCES	
								DECIMALS	FRACTIONS
A	LOCAL & REMOTE REVERSED.	3-6-67	17924	LAK	[Signature]	[Signature]		.X ± .05	± 1/64
Ø	ORIGINAL RELEASE FOR PRODUCTION	12-30-66		RME	[Signature]	[Signature]		.XX ± .01	± 0° 30'
X2	C100, C101 ADDED	11-16-66		[Signature]	[Signature]	[Signature]		.XXX ± .005	
X1	S102 ADDED	10-17-66		[Signature]	[Signature]	[Signature]			
X	EXP RELEASE	9-16-66		[Signature]	[Signature]	[Signature]			

REQ. ITEM	PART NO.	DESCRIPTION	SYMBOL
		F. BUDETTI	
		THE TECHNICAL MATERIEL CORP. MAMARONECK, NEW YORK	
		DIAGRAM, SCHEMATIC	

0213/ML
 FINAL APPROVAL
 CK1212 A

REQ. PER UNIT	USED ON
1	MODEL
	ASS'Y. NO.
	DATE
	11-9-66
	RAK 110-2 P17ST(2.5K)
	CK1233



REQ. ITEM	PART NO.	DESCRIPTION	SYMBOL
		BUDETTI	
		THE TECHNICAL MATERIEL CORP. MAMARONECK. NEW YORK	
		DIAGRAM, WIRING	
		STOCK SIZE	
		MATERIAL	
		TYPE & TEMPER	
		HEAT TREAT. SPEC.	
		FINISH & SPEC. NO.	
		MECH. DES. APP.	
		ELEC. DES. APP.	
		CHECKED	
		DRAWN	
		FINAL APPROVAL	
		CK1233	

TO T8000
220 VAC
CK1237

CK1237
VMO IN
J8008-P8045

VOX-5

POWER

HFO
J208

P8046

CA1296

CA605-5

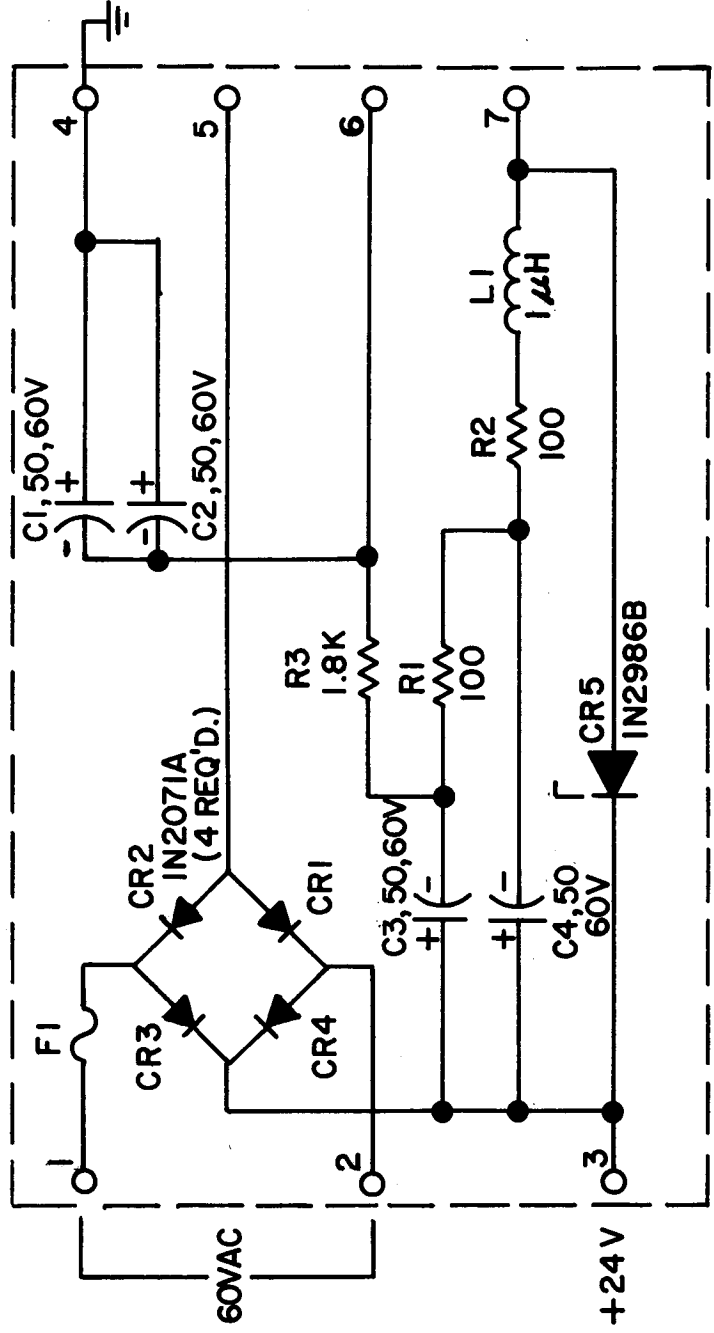
P8047

VOX

REQ. PER UNIT	1	USED ON	DATE
MODEL	SMEC-1	ABBY. NO.	12-13-66
	SMEE-1		12-13-66

CKI263

LAST SYMBOLS	
C4	
CR5	
F1	
L1	
R3	

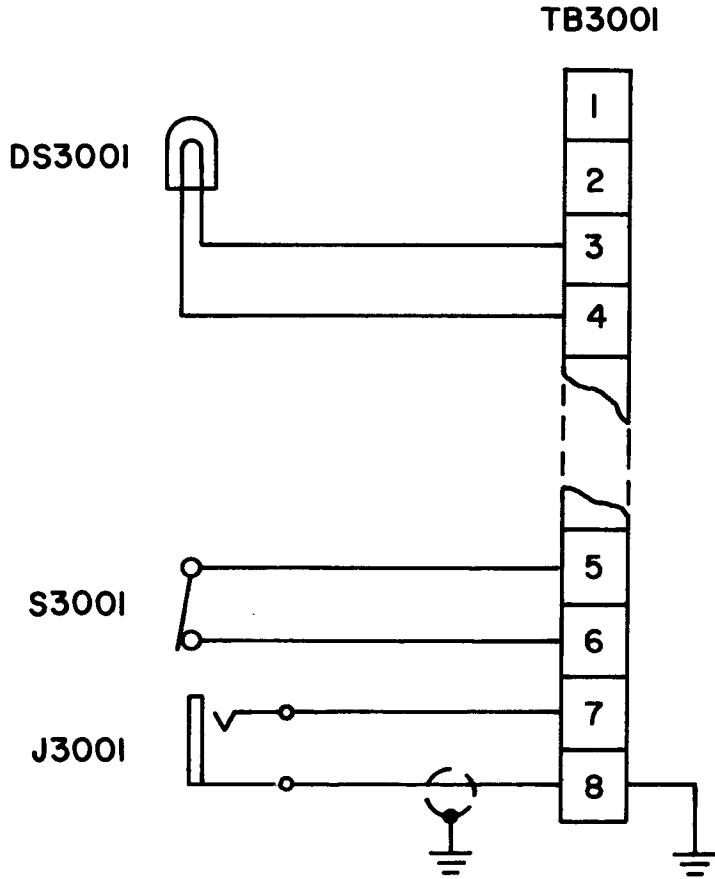


UNLESS OTHERWISE SPECIFIED

- 1 - ALL RESISTANCE VALUES ARE IN OHMS, 1 / 2 WATT.
- 2 - ALL CAPACITANCE VALUES ARE IN MICROFARADS.

REQ. ITEM		PART NO.		DESCRIPTION	SYMBOL
				THE TECHNICAL MATERIEL CORP. MAMARONECK, NEW YORK.	
				DIAGRAM, SCHEMATIC	
				POWER SUPPLY	
				H-AUSTIN	
				DRAWN	
				CHECKED	
				FINAL APPROVAL	
				CKI263	

APPLICATION			REVISIONS							
QTY	MODEL USED ON	ASS'Y NO.	LTR	DESCRIPTION	DATE	E.M.N.NO	DRAFT	CHKD	APPD	
1	KIT 319		X	EXPERIMENTAL RELEASE	3.23.67	—	W.H.W			
			Ø	ORIGINAL RELEASE FOR PRODUCTION	3.23.67	—	W.H.W			

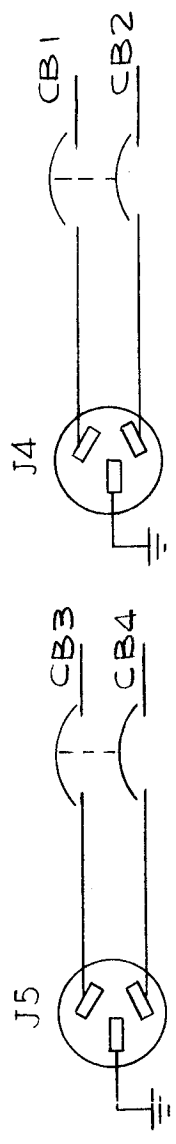
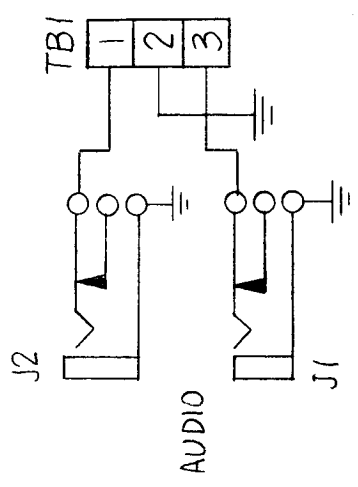


<small>UNLESS OTHERWISE SPECIFIED DIMENSIONS ARE IN INCHES AND INCLUDE CHEMICALLY APPLIED OR PLATED FINISHES</small> <small>DECIMALS FRACTIONS</small> <small>X ± .05 1/64</small> <small>.XX ± .01 TOLS. ANGLES</small> <small>.XXX ± .005 0°-30'</small>	REQ'D	ITEM	PART NUMBER	DESCRIPTION	SYM.	
	L. BUTLER			LIST OF MATERIAL		
	THE TECHNICAL MATERIEL CORP.			MAMARONECK, NEW YORK		
	DIAGRAM, SCHEMATIC					
	<small>NOTICE TO PERSONS RECEIVING THIS DRAWING</small> <small>THE TECHNICAL MATERIEL CORPORATION claims proprietary right in the material disclosed hereon. This drawing is issued in confidence for engineering information only and may not be reproduced or used to manufacture anything shown hereon without permission from THE TECHNICAL MATERIEL CORPORATION to the user. This drawing is loaned for mutual assistance and is subject to recall at any time.</small>			SIZE	CODE IDENT. NO.	DWG NO.
			A	82679	CK1267	Ø
			SCALE	SHEET		OF

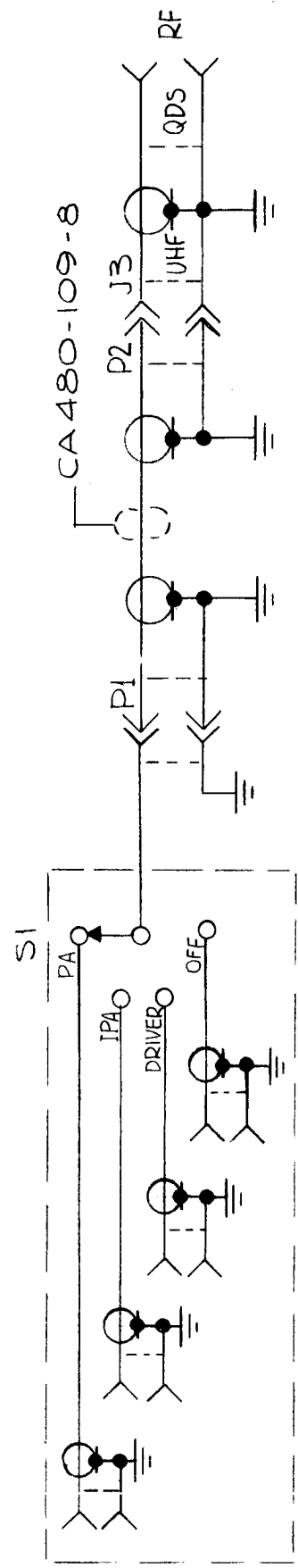
M/L DA

REQ. PER UNIT	1
MODEL	APP-10A
USED ON ASSY. NO.	
DATE	12-22-66

CK1271

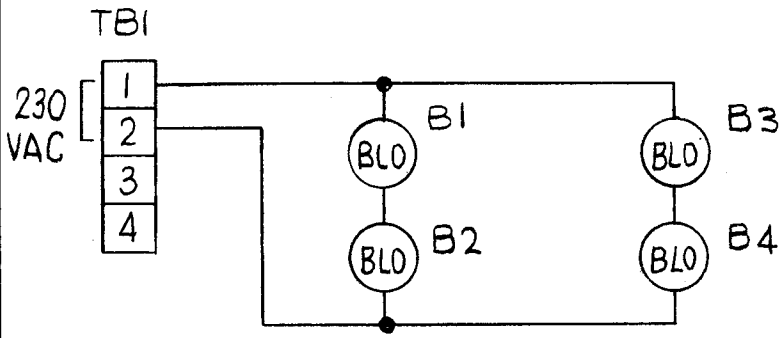
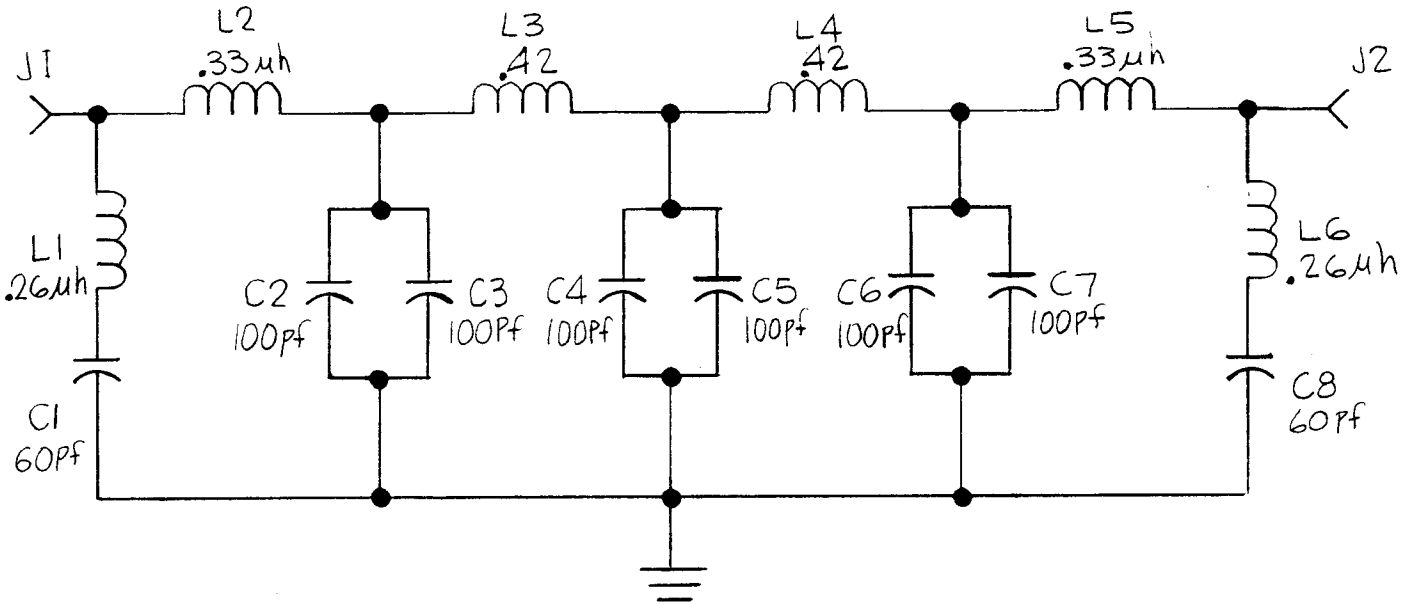


MONITOR



REQ. ITEM	PART NO.	DESCRIPTION	SYMBOL
		THE TECHNICAL MATERIEL CORP. MAMARONECK. NEW YORK	
		DIAGRAM, SCHEMATIC	
		APP 10A	
		CHECKED	
		DRAWN	
		HEAT TREAT. SPEC.	
		FINISH & SPEC. NO.	
		TYPE & TEMPER	
		MATERIAL	
		STOCK SIZE	
		SCALE	
		DATE	
		CH. NO.	
		CHECKER	
		DRAFTS	
		ENG. APP.	
		DESCRIPTION	
		UNLESS OTHERWISE SPECIFIED DIMENSIONS ARE IN INCHES AND INCLUDE CHEMICALLY APPLIED OR PLATED FINISHES	
		TOLERANCES	
		FRACTIONS	
		DECIMALS	
		ANGLES	
		CODE	
		EXP. RELEASE	
		SI REVISED	
		SI CLARIFIED	
		ORIGINAL RELEASE FOR PRODUCTION	
		3-1-67	
		3-1-67	
		2-17-67	
		12-22-66	
		APP 10A	
		CK1271	
		CK1271	

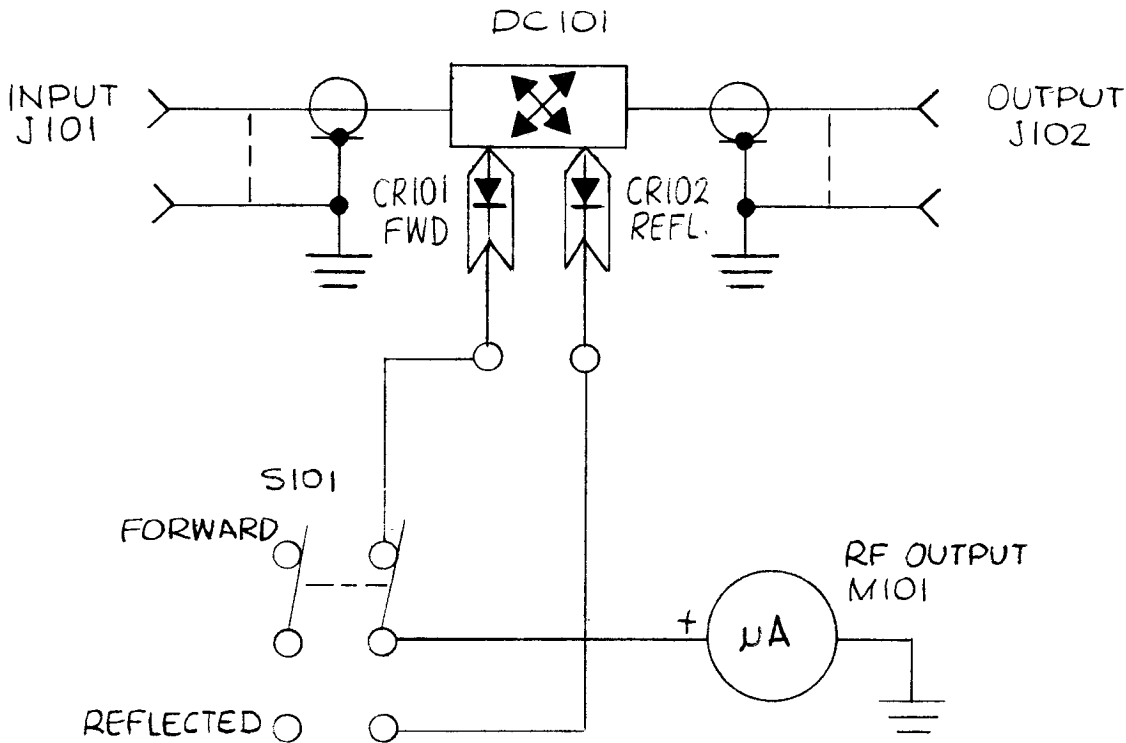
APPLICATION			REVISIONS							
QTY	MODEL USED ON	ASS'Y NO.	LTR	DESCRIPTION	DATE	E.M.N.NO	DRAFT	CHKD	APPD	
	LPFA-40K		X	EXP. RELEASE	1-17-67					
			Ø	ORIG. RELEASE FOR PROD.	5/3/67	Ø	CV			
			A	BLOWER CIRCUITRY ADD.	5.11.67	18208	WLB			



UNLESS OTHERWISE SPECIFIED DIMENSIONS ARE IN INCHES AND INCLUDE CHEMICALLY APPLIED OR PLATED FINISHES	REQ'D	ITEM	PART NUMBER	DESCRIPTION	SYM.
DECIMALS .X ± .05 .XX ± .01 .XXX ± .005 FRACTIONS 1/64 ANGLES 0° - 30°		F. BUDETTI		LIST OF MATERIAL	
MATERIAL				THE TECHNICAL MATERIEL CORP. MAMARONECK, NEW YORK	
FINISH				DIAGRAM, SCHEMATIC	

NOTICE TO PERSONS RECEIVING THIS DRAWING THE TECHNICAL MATERIEL CORPORATION claims proprietary right in the material disclosed hereon. This drawing is issued in confidence for engineering information only and may not be reproduced or used to manufacture anything shown hereon without permission from THE TECHNICAL MATERIEL CORPORATION to the user. This drawing is loaned for mutual assistance and is subject to recall at any time.	SIZE	CODE IDENT. NO.	DWG NO.	ISSUE
	A	82679	CK 1278	A
SCALE			SHEET	OF

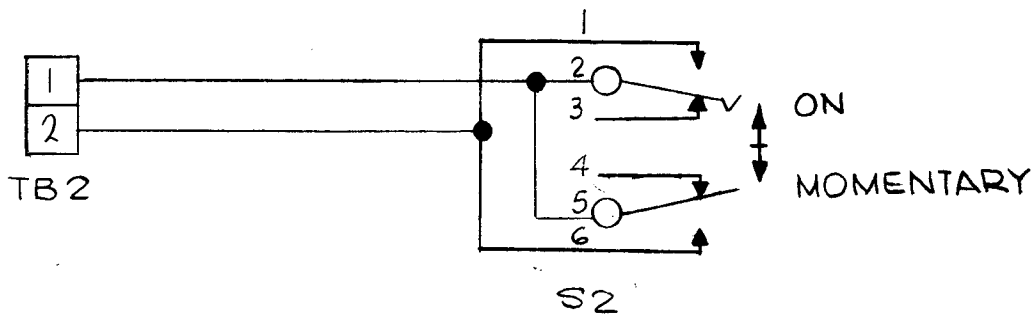
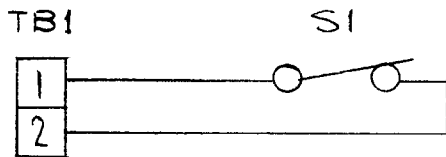
APPLICATION			REVISIONS						
QTY	MODEL USED ON	ASS'Y NO.	LTR	DESCRIPTION	DATE	E.M.N.NO	DRAFT	CHKD	APPD
	SWRA-1K		X	EXP. RELEASE	1-23-67		<i>MB</i>	<i>MB</i>	<i>MB</i>
			Ø	ORIGINAL RELEASE FOR PRODUCTION	3-28-67		<i>MB</i>	<i>MB</i>	



UNLESS OTHERWISE SPECIFIED DIMENSIONS ARE IN INCHES AND INCLUDE CHEMICALLY APPLIED OR PLATED FINISHES		REQ'D	ITEM	PART NUMBER	DESCRIPTION	SYM.	
DECIMALS: .X ± .05, .XX ± .01, .XXX ± .005 FRACTIONS: 1/64, ANGLES: 0° - 30'		F. BUDETTI LIST OF MATERIAL					
MATERIAL		APPROVAL <i>[Signature]</i>		DATE 3/27/67		THE TECHNICAL MATERIEL CORP. MAMARONECK, NEW YORK DIAGRAM, SCHEMATIC	
FINISH		MECH. DES.		DATE			
		ELECT. DES. <i>[Signature]</i>		DATE 27 MAR 67			
		CHECKED <i>[Signature]</i>		DATE			
		DRAWN <i>[Signature]</i>		DATE 1-23-67			
NOTICE TO PERSONS RECEIVING THIS DRAWING THE TECHNICAL MATERIEL CORPORATION claims proprietary right in the material disclosed hereon. This drawing is issued in confidence for engineering information only and may not be reproduced or used to manufacture anything shown hereon without permission from THE TECHNICAL MATERIEL CORPORATION to the user. This drawing is loaned for mutual assistance and is subject to recall at any time.				SIZE A	CODE IDENT. NO. 82679	DWG NO. CK1280	ISSUE Ø
				SCALE	SHEET		OF

APPLICATION			REVISIONS						
QTY	MODEL USED ON	ASS'Y NO.	LTR	DESCRIPTION	DATE	E.M.N.NO	DRAFT	CHKD	APPD
1	AX 560A		X	EXP. RELEASE	2-27-67		<i>[Signature]</i>	<i>[Signature]</i>	<i>[Signature]</i>
			Ø	ORIGINAL RELEASE FOR PRODUCTION	3-28-67		<i>[Signature]</i>	<i>[Signature]</i>	<i>[Signature]</i>

TEST KEY
(SHOWN IN CENTER POSITION)



UNLESS OTHERWISE SPECIFIED DIMENSIONS ARE IN INCHES AND INCLUDE CHEMICALLY APPLIED OR PLATED FINISHES		REQ'D ITEM	PART NUMBER	DESCRIPTION	SYM.
DECIMALS: .X ± .05, .XX ± .01, .XXX ± .005 FRACTIONS: 1/64, ANGLES: 0°-30'		F. BUDETTI LIST OF MATERIAL			
MATERIAL		FIN. APPR. <i>[Signature]</i> MECH. DES. <i>[Signature]</i>	DATE DATE	THE TECHNICAL MATERIEL CORP. MAMARONECK, NEW YORK	
FINISH		ELECT. DES. <i>[Signature]</i> CHECKED <i>[Signature]</i> DRAWN <i>[Signature]</i>	DATE DATE DATE	DIAGRAM, SCHEMATIC	
NOTICE TO PERSONS RECEIVING THIS DRAWING THE TECHNICAL MATERIEL CORPORATION claims proprietary right in the material disclosed hereon. This drawing is issued in confidence for engineering information only and may not be reproduced or used to manufacture anything shown hereon without permission from THE TECHNICAL MATERIEL CORPORATION to the user. This drawing is loaned for mutual assistance and is subject to recall at any time.		SIZE A	CODE IDENT. NO. 82679	DWG NO. CK1298	ISSUE Ø
SCALE			SHEET OF		