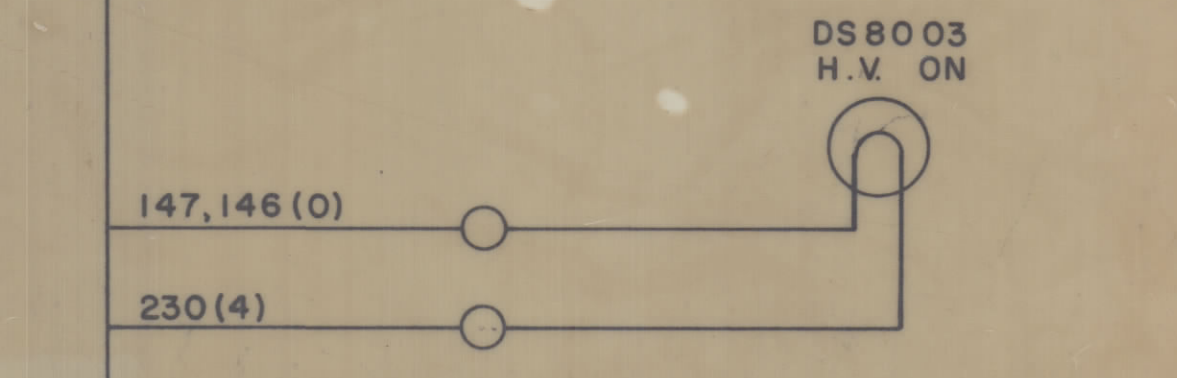
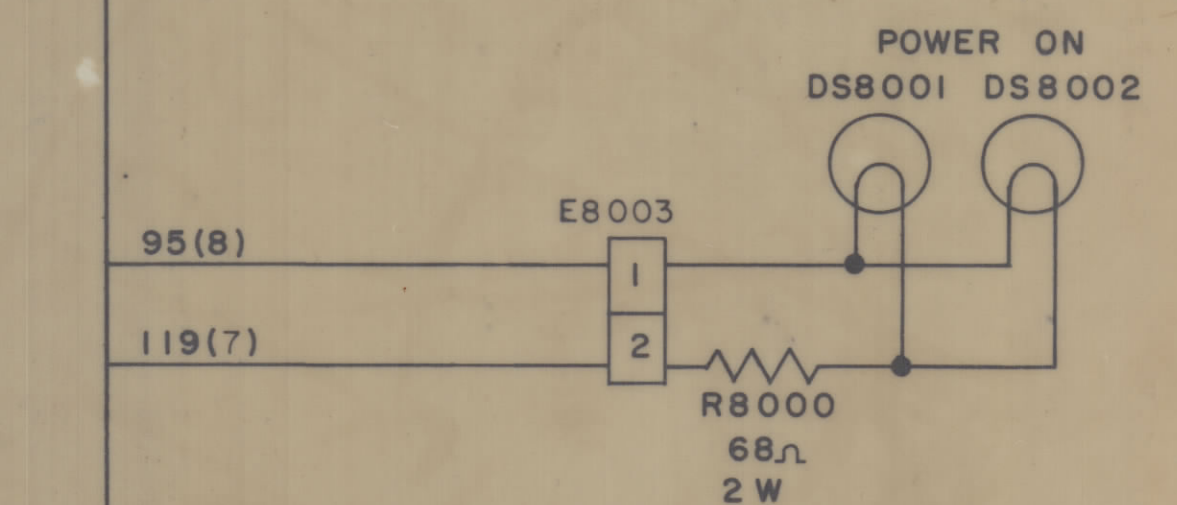
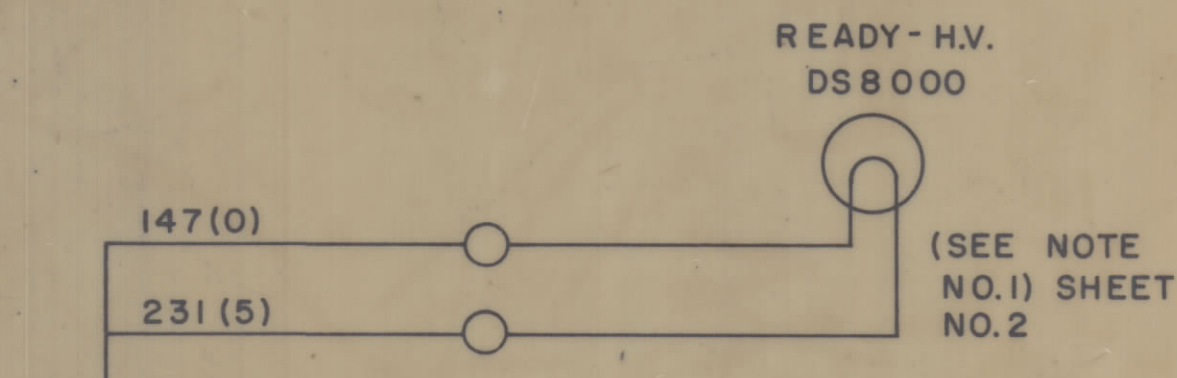
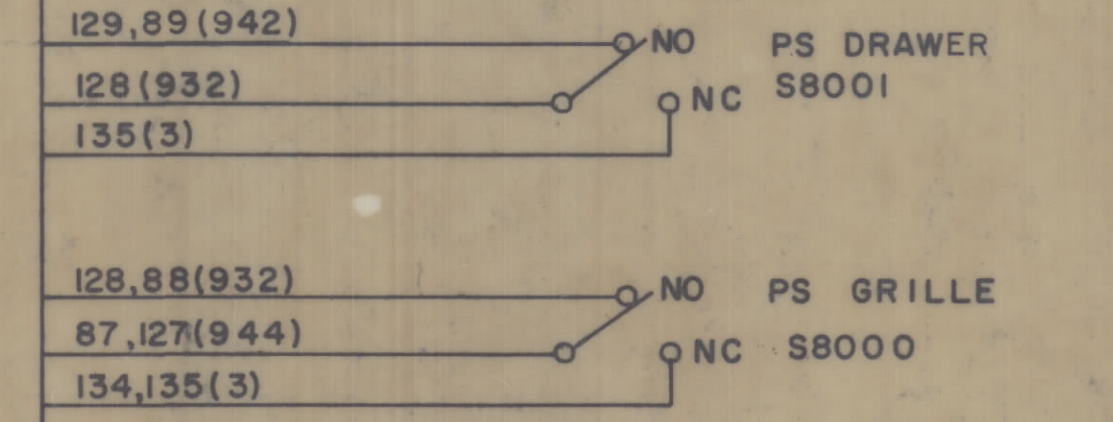
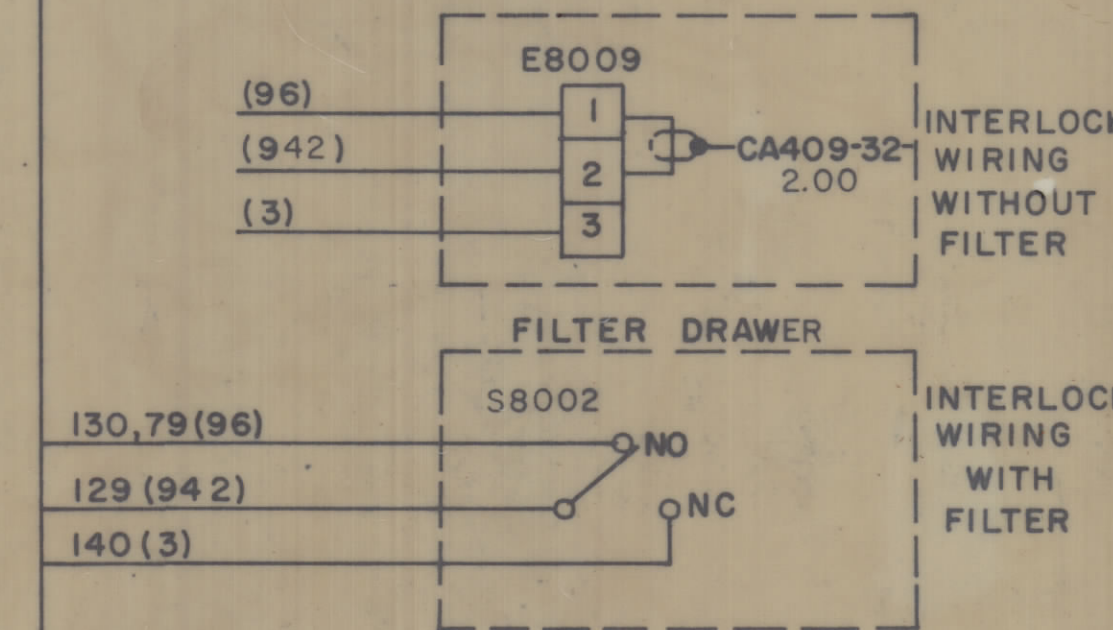
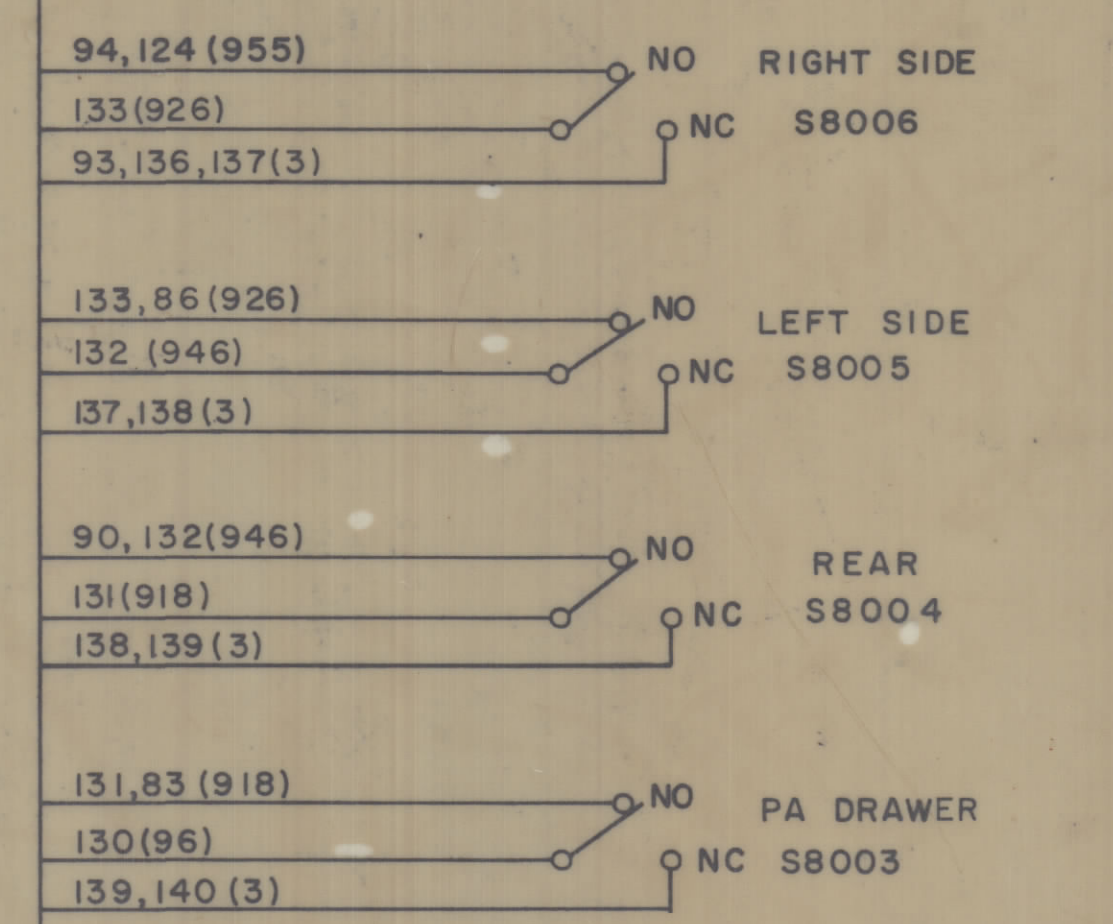
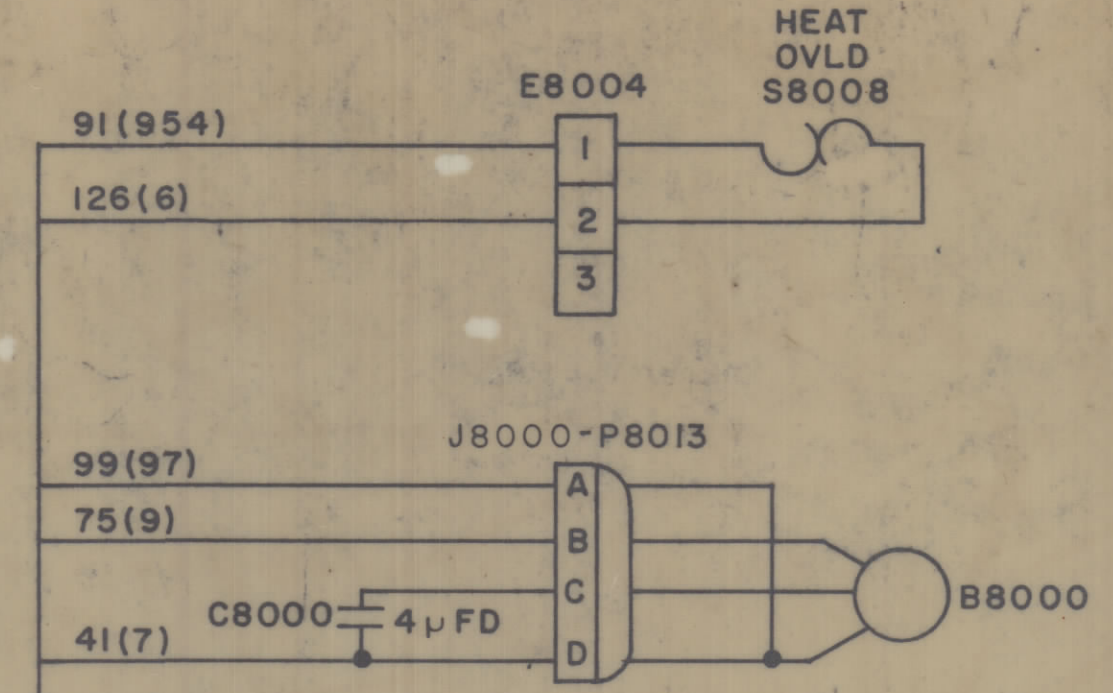
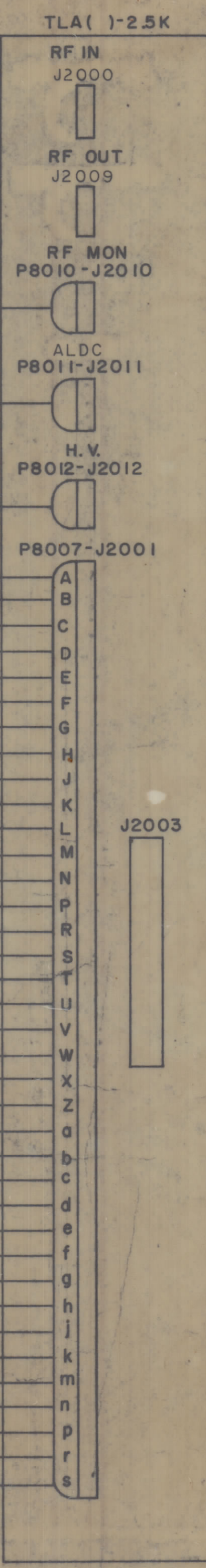
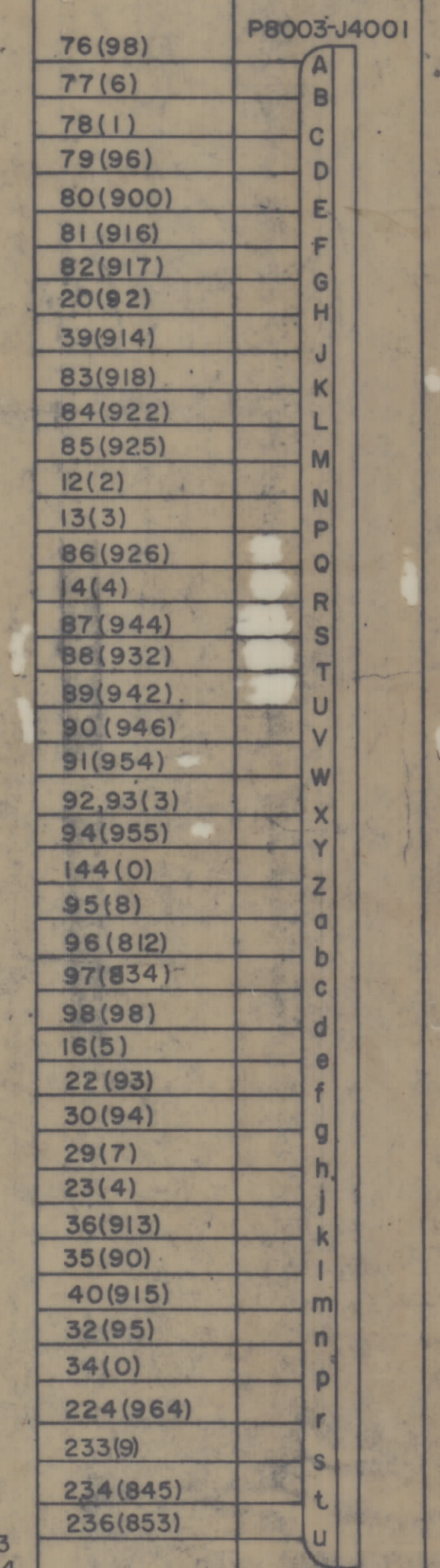
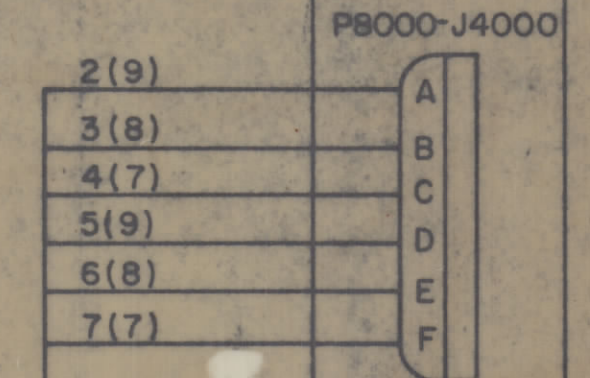
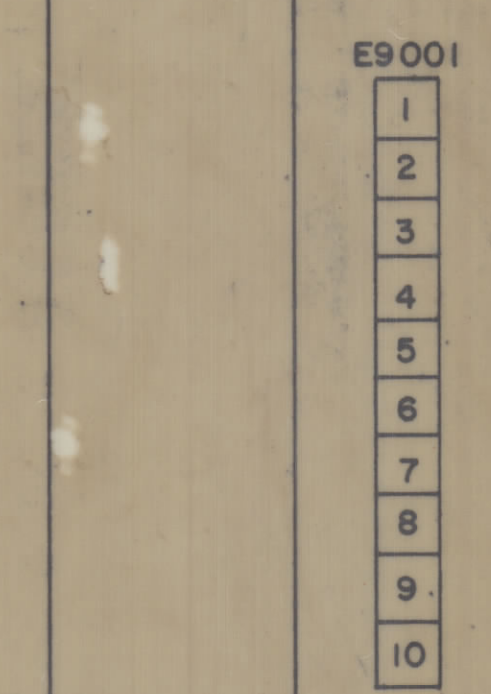
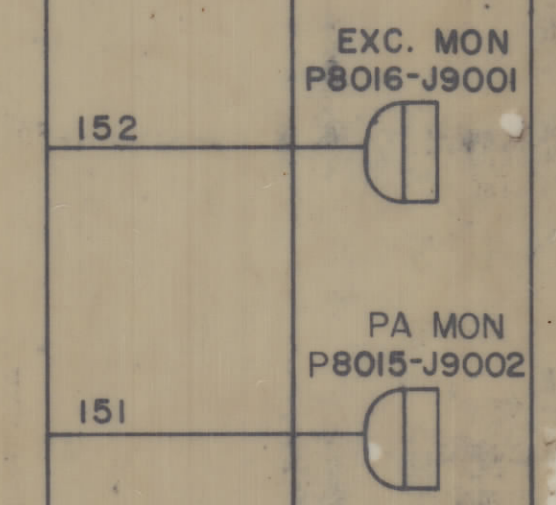
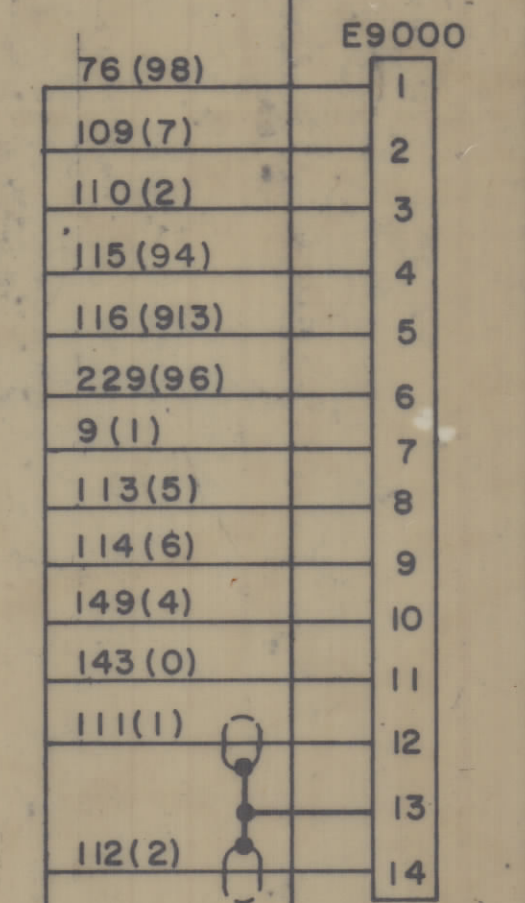


		REVISIONS					
ZONE	LTR	DESCRIPTION	DATE	E.M.N.NO	DRAFT	CHKD	APPD
	X	EXP. RELEASE	11-11-64				
	X1	ON TCP IT. 20 8-83 REV.	11-14-64				
	X2	S8007 DELETED ON B8000	3-2-67				
	Ø	ORIGINAL RELEASE FOR PROD	3-3-67			RME	
	A	ON P8003 PIN 4 NO 234 ADDED SEE SHEET 2 OF 3	3-13-67	17952	GDL		
	B	SEE SHEET 3	5-12-67	18201	L.A.K.		
	C	ON P8003 PIN 4 NO 236 (853) ADDED	12-12-67	18671	H.S.		
	D	SEE SHEET 2 OF 3	1-16-68	18722	H.S.		
	E	SEE SHEET 2 OF 3	1-10-74	21197			

AS REQ
AX633
AX646
AX647 ALARM



229,152,149,116
115,114,113,112
111,110,109,9

76,143,151

236,234,233
224,98,97,96,92,85,84
82,81,80,78,77,76,40,39
36,35,34,32,30,29,23,22
20,16,14,13,12,7,6,5,4,3,2

93,94,95,144
88,89,90,91
79,83,86,87

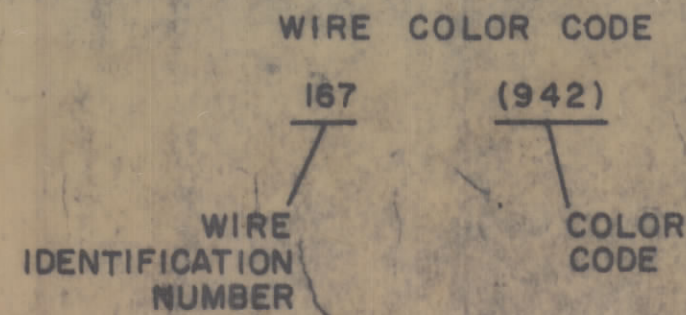
151,150
145,108,107,106
105,104,103,102
101,100,68,66,65
64,63,62,61,60,59
58,57,56,55,54,53
52,51,50,49,48,47
46,45,44,43,42,41

136,134,127,126,124,99,94,93
91,90,89,88,87,86,83,79,75,41

TO SHEET 2

CA1266

148,144,143,142 145,146



QTY / UNIT	MODEL USED ON	ASS'Y NO.
	TST(1)2.5K,RAK110-2	
APPLICATION		
CODE		

NOTICE TO PERSONS RECEIVING THIS DRAWING
THE TECHNICAL MATERIEL CORPORATION claims proprietary right in the material disclosed herein. This drawing is issued in confidence for engineering information only and may not be reproduced or used to manufacture anything shown herein without permission from THE TECHNICAL MATERIEL CORPORATION to the user. This drawing is loaned for mutual assistance and is subject to recall at any time.

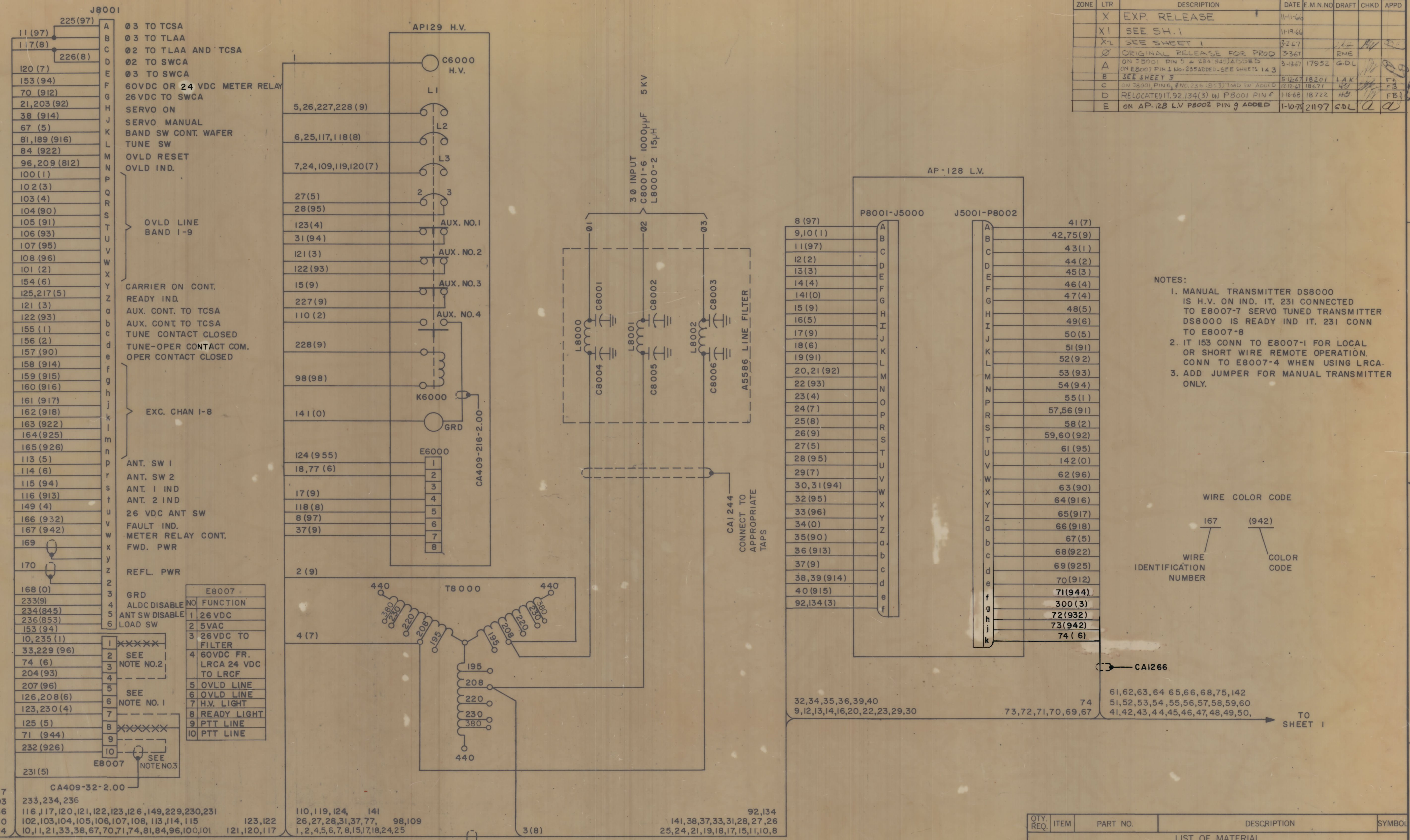
UNLESS OTHERWISE SPECIFIED DIMENSIONS ARE IN INCHES AND INCLUDE CHEMICALLY APPLIED OR PLATED FINISHES

TOLERANCES ON
DECIMALS .X ± .05
.XX ± .01
.XXX ± .005
FRACTIONS ± 1/64
ANGLES ± 0° 30'

QTY. REQ.	ITEM	PART NO.	DESCRIPTION	SYMBOL
LIST OF MATERIAL				
THE TECHNICAL MATERIEL CORP. MAMARONECK, NEW YORK				
DIAGRAM, WIRING				
SIZE		CODE IDENT. NO.	DWG NO.	ISSUE
D		82679	CK 1237	E
SCALE: NONE		M/L	SHEET 1	OF 3

B CK1237 E

REVISIONS							
ZONE	LTR	DESCRIPTION	DATE	E.M.N.NO	DRAFT	CHKD	APPD
	X	EXP. RELEASE	11-11-66				
	X1	SEE SH. 1	11-19-66				
	X2	SEE SHEET 1	3-2-67				
	Ø	ORIGINAL RELEASE FOR PROD	3-3-67			RME	
	A	ON J8001 PIN 5 & 234-945 ADDED ON E8007 PIN 1 NO. 235 ADDED-SEE SHEETS 1 & 3	3-13-67	17952		GDL	
	B	SEE SHEET 3	5-12-67	18201		LAK	
	C	ON J8001 PIN 6, NO. 236 (933) LAMP SW ADDED	12-12-67	18671		H3	
	D	RELOCATED IT. 92, 134 (3) ON P8001 PIN F	11-16-68	18722		H3	
	E	ON AP-128 LV P8002 PIN 9 ADDED	1-10-71	21197		CBL	



J8001	DESCRIPTION
11 (97)	Ø3 TO TCSA
117 (8)	Ø3 TO TLAA
226 (8)	Ø2 TO TLAA AND TCSA
120 (7)	Ø2 TO SWCA
153 (94)	Ø3 TO SWCA
70 (912)	60VDC OR 24 VDC METER RELAY
21,203 (92)	26VDC TO SWCA
38 (914)	SERVO ON
67 (5)	SERVO MANUAL
81,189 (916)	BAND SW CONT. WAFER
84 (922)	TUNE SW
96,209 (812)	OVLD RESET
100 (1)	OVLD IND.
102 (3)	
103 (4)	
104 (90)	
105 (91)	
106 (93)	
107 (95)	
108 (96)	
101 (2)	
154 (6)	
125,217 (5)	OVLD LINE BAND 1-9
121 (3)	
122 (93)	
155 (1)	
156 (2)	
157 (90)	
158 (914)	
159 (915)	
160 (916)	
161 (917)	
162 (918)	
163 (922)	
164 (925)	
165 (926)	
113 (5)	
114 (6)	
115 (94)	
116 (913)	
149 (4)	
166 (932)	
167 (942)	
169	
170	
168 (0)	
233 (9)	
234 (845)	
236 (853)	
153 (94)	
10,235 (1)	
33,229 (96)	
74 (6)	
204 (93)	
207 (96)	
126,208 (6)	
123,230 (4)	
125 (5)	
71 (944)	
232 (926)	
231 (5)	

DESCRIPTION	NO	FUNCTION
	1	26 VDC
	2	5VAC
	3	26VDC TO FILTER
	4	60VDC FR. LRCA 24 VDC TO LRCA
	5	OVLD LINE
	6	OVLD LINE
	7	H.V. LIGHT
	8	READY LIGHT
	9	PTT LINE
	10	PTT LINE

DESCRIPTION	NO	FUNCTION
	1	26 VDC
	2	5VAC
	3	26VDC TO FILTER
	4	60VDC FR. LRCA 24 VDC TO LRCA
	5	OVLD LINE
	6	OVLD LINE
	7	H.V. LIGHT
	8	READY LIGHT
	9	PTT LINE
	10	PTT LINE

P8001-J5000	J5001-P8002
8 (97)	41 (7)
9,10 (1)	42,75 (9)
11 (97)	43 (1)
12 (2)	44 (2)
13 (3)	45 (3)
14 (4)	46 (4)
141 (0)	47 (4)
15 (9)	48 (5)
16 (5)	49 (6)
17 (9)	50 (5)
18 (6)	51 (91)
19 (91)	52 (92)
20,21 (92)	53 (93)
22 (93)	54 (94)
23 (4)	55 (1)
24 (7)	57,56 (91)
25 (8)	58 (2)
26 (9)	59,60 (92)
27 (5)	61 (95)
28 (95)	142 (0)
29 (7)	62 (96)
30,31 (94)	63 (90)
32 (95)	64 (916)
33 (96)	65 (917)
34 (0)	66 (918)
35 (90)	67 (5)
36 (913)	68 (922)
37 (9)	69 (925)
38,39 (914)	70 (912)
40 (915)	71 (944)
92,134 (3)	300 (3)
	72 (932)
	73 (942)
	74 (6)

NOTES:
 1. MANUAL TRANSMITTER DS8000 IS H.V. ON IND. IT. 231 CONNECTED TO E8007-7 SERVO TUNED TRANSMITTER DS8000 IS READY IND IT. 231 CONN TO E8007-8
 2. IT 153 CONN TO E8007-1 FOR LOCAL OR SHORT WIRE REMOTE OPERATION. CONN TO E8007-4 WHEN USING LRCA.
 3. ADD JUMPER FOR MANUAL TRANSMITTER ONLY.

WIRE COLOR CODE
 167 (942)
 WIRE IDENTIFICATION NUMBER COLOR CODE

TO SHEET 3

235,232,217
209,208,207,204,203
189,170,169,168,167,166
165,164,163,162,161,160
159,158,157,156,155,154

CA409-32-2.00
233,234,236
116,117,120,121,122,123,126,149,229,230,231
102,103,104,105,106,107,108,113,114,115
10,11,21,33,38,67,70,71,74,81,84,96,100,101
123,122
121,120,117

110,119,124,141
26,27,28,31,37,77,98,109
1,2,4,5,6,7,8,15,17,18,24,25

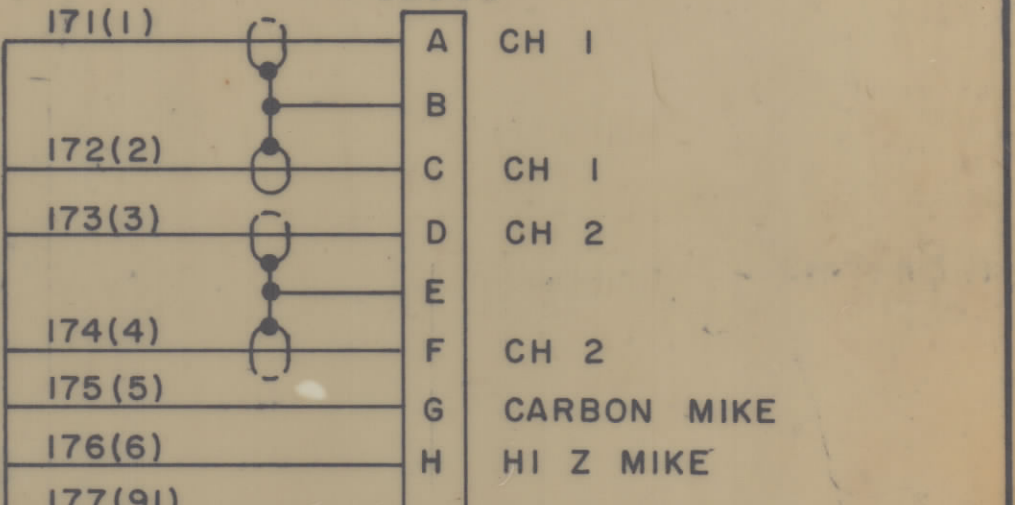
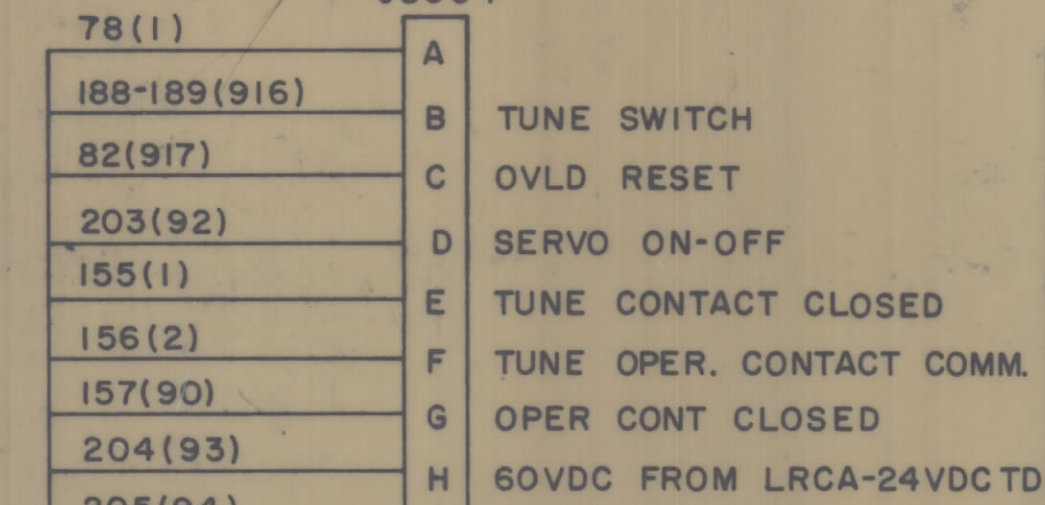
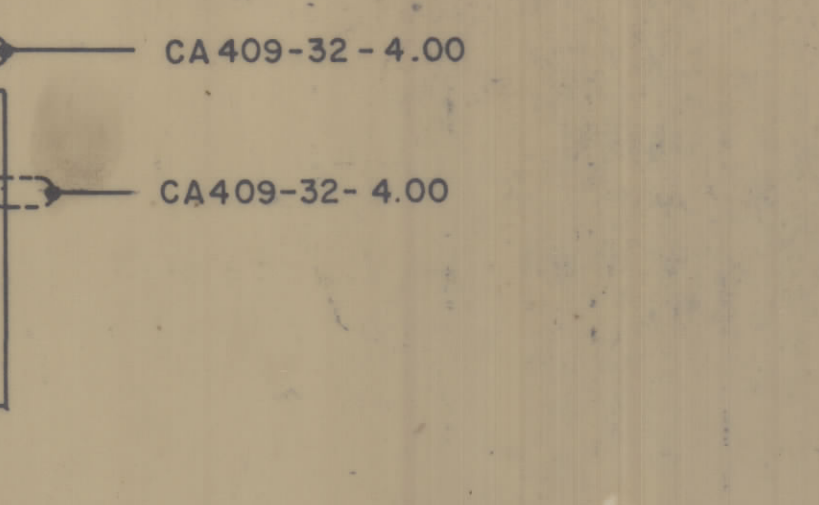
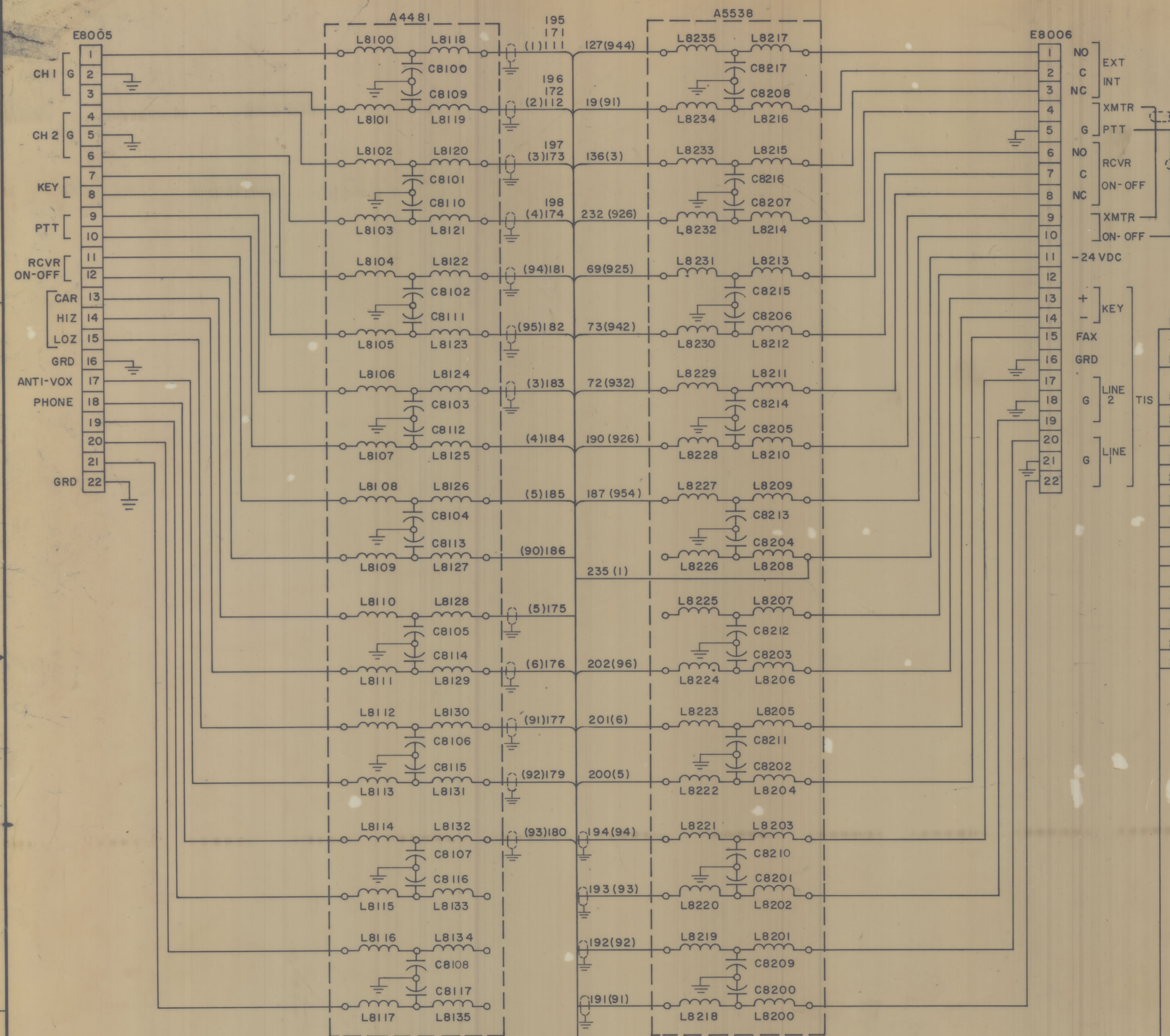
92,134
141,38,37,33,31,28,27,26
25,24,21,19,18,17,15,11,10,8

32,34,35,36,39,40
9,12,13,14,16,20,22,23,29,30

74
73,72,71,70,69,67
61,62,63,64,65,66,68,75,142
51,52,53,54,55,56,57,58,59,60
41,42,43,44,45,46,47,48,49,50,
TO SHEET 1

QTY. REQ.	ITEM	PART NO.	DESCRIPTION	SYMBOL
LIST OF MATERIAL				
UNLESS OTHERWISE SPECIFIED DIMENSIONS ARE IN INCHES AND INCLUDE CHEMICALLY APPLIED OR PLATED FINISHES				
TOLERANCES ON DECIMALS X ± .05 XX ± .01 XXX ± .005 FRACTIONS ± 1/64 ANGLES ± 0°-30'				
MATERIAL FINISH				
SIZE CODE IDENT. NO. DWG. NO. ISSUE				
D 82679 CK 1237 E				
SCALE 1/16" = 1" SHEET 2 OF 3				

REVISIONS							REVISIONS								
ZONE	LTR	DESCRIPTION	DATE	E.M.N. NO.	DRAFT	CHKD	APPD	ZONE	LTR	DESCRIPTION	DATE	E.M.N. NO.	DRAFT	CHKD	APPD
A		ON A4481 & A5538 WIRTS 190, 187, 235 ADDED WIRE 232 WAS 190 ON E8006 JUMBERS FROM TENS 4 TO 5 & 5 TO 10 ADDED LETT. 94 MIN 9, 10 & 11 ADDED ON J8003 No. 232 AT PINV DELETED.	3/2/67	17952	GDL			X	EXP. RELEASE		11-11-67				
B		CA480-133-5.00 WAS CA409-133-5.00	5-12-67	18201	L.A.K.			X1	SEE SH. 1		11-14-67				
C		SEE SHEET 1 & 2	12-12-67	18671	H.P.			X2	SEE SHEET 1		3-2-67				
D		SEE SHEET 2 OF 3	1-16-68	18722	H.P.				ORIGINAL RELEASE FOR PROD		3-3-67			RME	
E		SEE SH 2 OF 3	1-10-74												



L8100 - L8135 10µH
 L8200 - L8235 510µF
 C8100 - C8117
 C8200 - C8217

197, 198, 200, 201, 202, 232, 235
 185, 186, 187, 190, 191, 192, 193, 194, 195, 196
 174, 175, 176, 177, 178, 180, 181, 182, 183, 184
 19, 69, 72, 73, 111, 112, 127, 136, 171, 172, 173

148, 168, 178,
 199, 216, 218, 223

215, 217
 211, 212, 213, 214
 205, 206, 209, 210
 80, 166, 167, 169, 170

218, 215, 214, 213, 212, 211
 210, 206, 205, 202, 201
 200, 199, 198, 197, 196
 195, 194, 193, 192, 191

221, 222
 207, 208, 219, 220,
 157, 188, 189, 203, 204
 78, 82, 85, 97, 155, 156

223, 222, 221, 220, 219, 190
 188, 187, 186, 185, 184, 183
 182, 181, 180, 179, 178, 177
 176, 175, 174, 173, 172, 171

165, 224
 160, 161, 162, 163, 164
 150, 152, 154, 158, 159

QTY / UNIT	TST (2.5K, RAK110.2)	ASS'Y NO.
APPLICATION		
CODE		
MATERIAL		
FINISH		

UNLESS OTHERWISE SPECIFIED DIMENSIONS ARE IN INCHES AND INCLUDE CHEMICALLY APPLIED OR PLATED FINISHES	FINAL APPROVAL MECH. DES.	DATE 3/2/67
TOLERANCES ON DECIMALS .X ± .05 .XX ± .01 .XXX ± .005	ELECT. DES. CHECKED	DATE 2/10/67
MATERIAL		
FINISH		

QTY. REQ.	ITEM	PART NO.	DESCRIPTION	SYMBOL
LIST OF MATERIAL				
THE TECHNICAL MATERIEL CORP. MAMARONECK, NEW YORK				
DIAGRAM, WIRING				
SIZE	CODE	IDENT. NO.	DWG. NO.	ISSUE
D	82679	CK 1237		E
SCALE	SHEET 3 OF 3			

NOTICE TO PERSONS RECEIVING THIS DRAWING
 THE TECHNICAL MATERIEL CORPORATION claims proprietary right in the material disclosed herein. This drawing is issued in confidence for engineering information only and may not be reproduced or used to manufacture anything shown hereon without permission from THE TECHNICAL MATERIEL CORPORATION to the user. This drawing is loaned for mutual assistance and is subject to recall at any time.