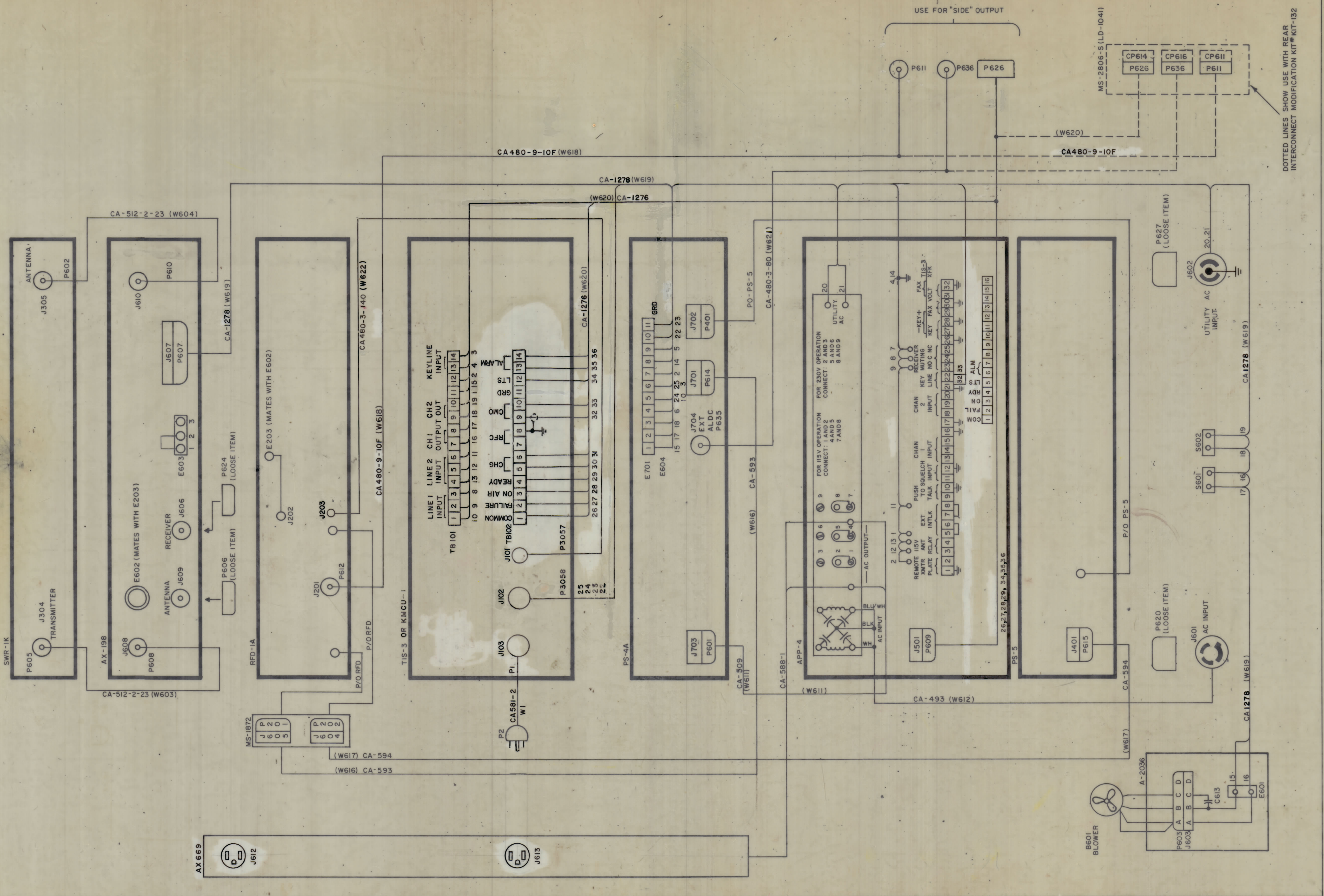


THE TECHNICAL MATERIEL CORP.
MAMARONECK, NEW YORK
MODEL SBT-IKE-6
CK 1215-A



DOTTED LINES SHOW USE WITH REAR INTERCONNECT MODIFICATION KIT KIT-132

NOTICE TO PERSONS RECEIVING THIS DRAWING
THE TECHNICAL MATERIEL CORPORATION claims proprietary right in the material disclosed herein. This drawing is issued in confidence for engineering information only and may not be reproduced or used to manufacture anything shown herein without permission from THE TECHNICAL MATERIEL CORPORATION to the effect that this drawing is loaned for mutual assistance and is subject to recall at any time.
Property of:
THE TECHNICAL MATERIEL CORPORATION
MAMARONECK, NEW YORK

A	UPDATED	6-5-67	18260	G.D.L.	APP	FE	J.A.
X	ORIGINAL RELEASE FOR PRODUCTION	10-3-66		CV			
X	EXPERIMENTAL RELEASE	9-28-66	X	RME			
BYM	ZONE	DESCRIPTION	DATE	CH. NO.	DRAFTS	CHECKER	ENG. APP.
UNLESS OTHERWISE SPECIFIED.							
DIMENSIONS ARE IN INCHES							
TOLERANCES ON FRACTIONS ± 1/64 DECIMALS ± .005 ANGLES ± 1/2°							
MAXIMUM ALLOWABLE TOLERANCES HAVE BEEN DETERMINED AND ANY DEVIATIONS WILL BE CAUSE FOR REJECTION. REMOVE ALL BURRS & SHARP EDGES							

REQ. ITEM	PART NO.	DESCRIPTION	SYMBOL
STOCK SIZE			
MATERIAL			
TYPE & TEMPER			
HEAT TREAT. SPEC.			
FINISH & SPEC. NO.			
ELEC. DES. APP. MECH. DES. APP.			

REQ. PER UNIT	MODEL	SECTION	USED ON	ASSY. NO.	DATE
	SBT-IKE-6				3-29-66

DRAWN	CHECKED	FINAL APPROVAL
B		
SHEET OF CK 1215		