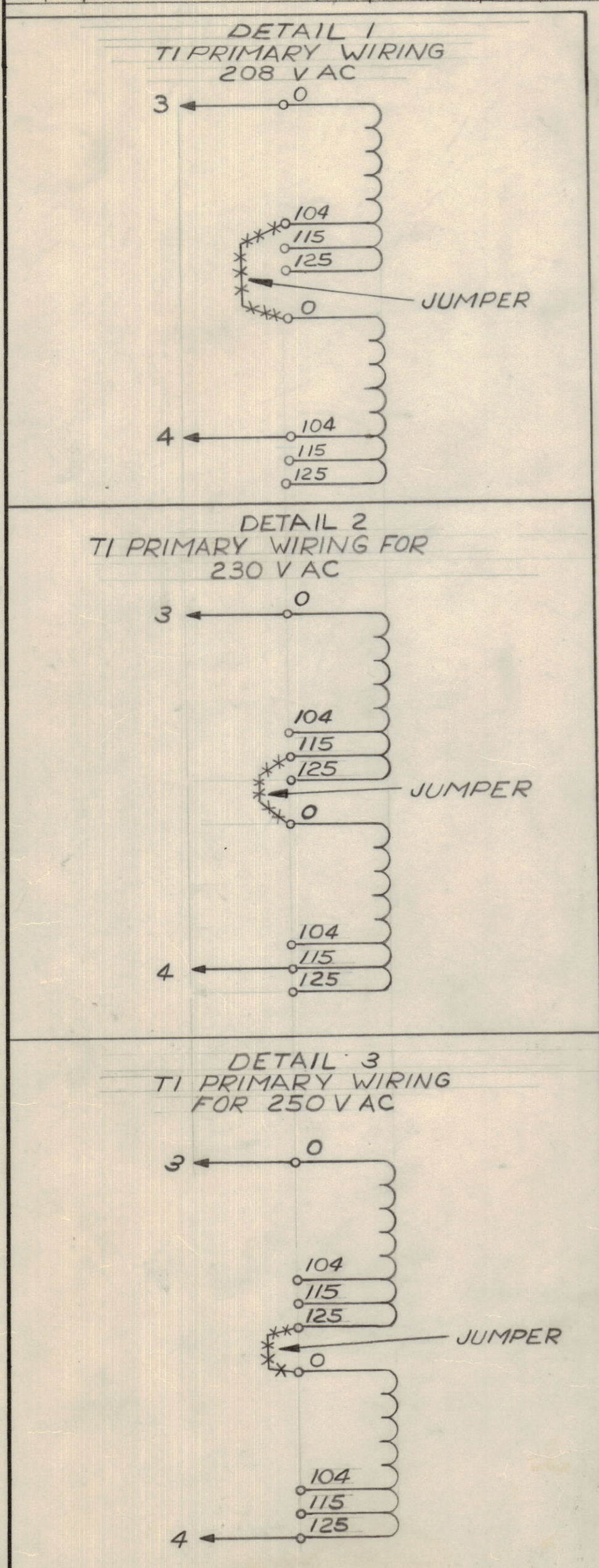


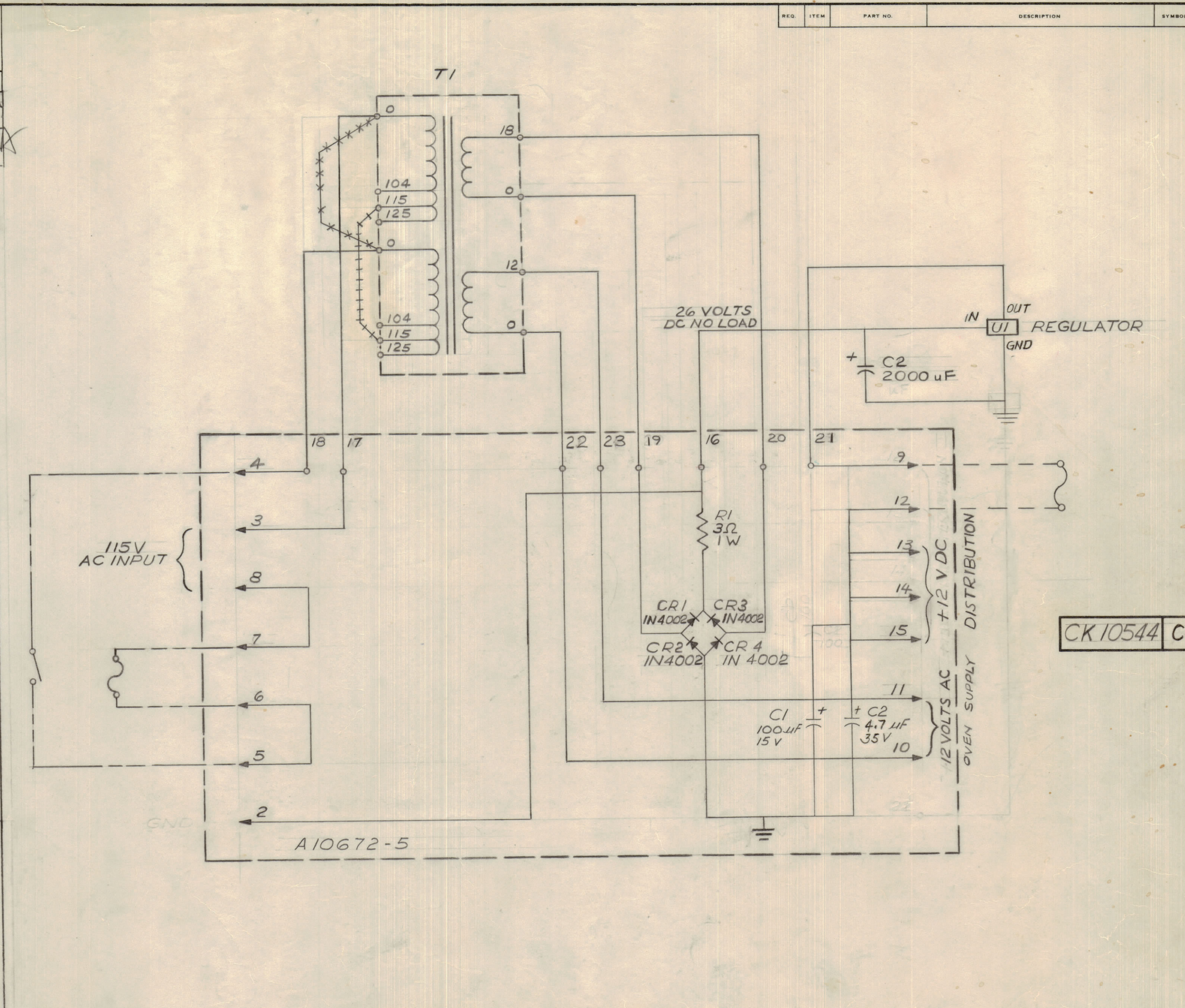
IF IT IS FOUND DESIRABLE TO CHANGE ANY TOLERANCE OR OTHER DETAIL SPECIFIED ON THIS DRAWING NOTIFY THE PURCHASER PROMPTLY.

MAXIMUM ALLOWABLE TOLERANCES HAVE BEEN DETERMINED AND DEVIATIONS WILL BE CAUSE FOR REJECTION; REMOVE ALL BURRS AND SHARP EDGES

| ISSUE | ITEM | CHANGED FROM | DATE | CH. NO. | DRAFTS | CHECKER | ENG. APP. |
|-------|------|---------------------|-----------|---------|--------|---------|-----------|
| Ø | | REL TO PROD | JAN 15/68 | | RPL | | |
| A | | REV AS PER CEMN | FEB 20/68 | 347 | RPL | | |
| B | | REVISED AS PER CEMN | 1 SEPT 71 | 1052 | LB | | |
| C | | REVISED PER CEMN | 4 JAN 73 | 1209 | MM | AGS | SDN |



| TOLERANCES | | SCALE: |
|------------|---|---|
| ALL OTHERS | DEC. DIM. ± FRAC. DIM. ± ANGULAR DIM. ± | DRILL, PUNCH, COMMERCIAL STOCK SIZES AND MANUFACTURERS TOLERANCES ARE NOT INCLUDED. |



NOTE: FOR 208, 230 OR 250V OPERATION REMOVE JUMPER MARKED +++++ (GREY COLOUR) AND REWIRE ONE SIDE OF JUMPER MARKED *-*-*-* (WHT & BROWN) COLOUR AS IN DETAIL 1, 2, 3 RESPECTIVELY.

CK10544 C

| | | | |
|---------|-------------|------------|------|
| STR-5 | 062/67 | OCT 24/67 | |
| MODEL | PROJECT NO. | ASS'Y. NO. | DATE |
| USED ON | | | |

| | |
|--|---------------------------------|
| TMC (Canada) LIMITED OTTAWA ONTARIO | |
| SCHEMATIC AC POWER SUPPLY | |
| RPL | A.S. |
| DRAWN | ELEC. DES. APP. MECH. DES. APP. |
| HEAT TREAT. SPEC. | |
| CHECKED | |
| FINAL APPROVAL | |
| CK10544 C | |