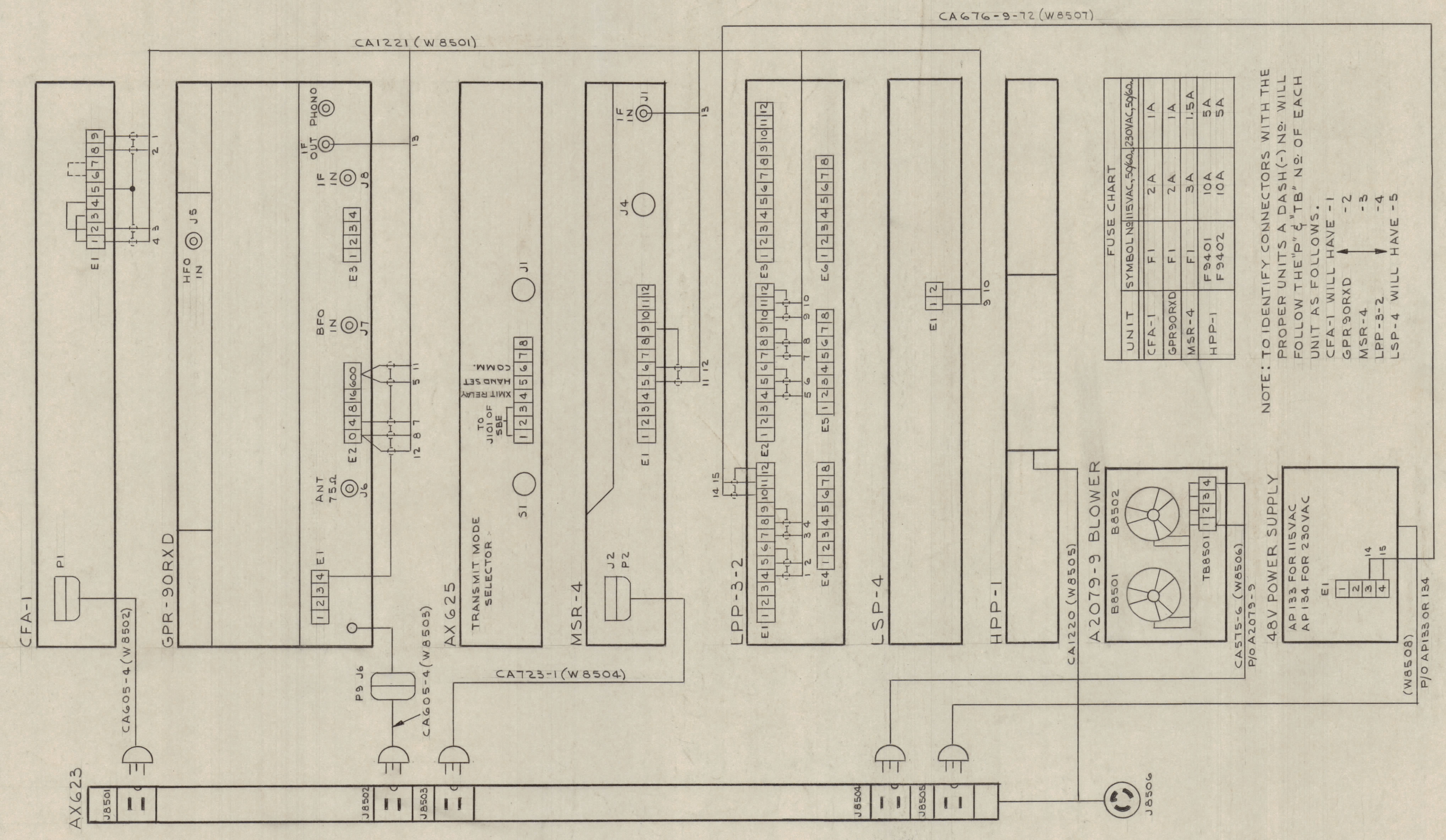


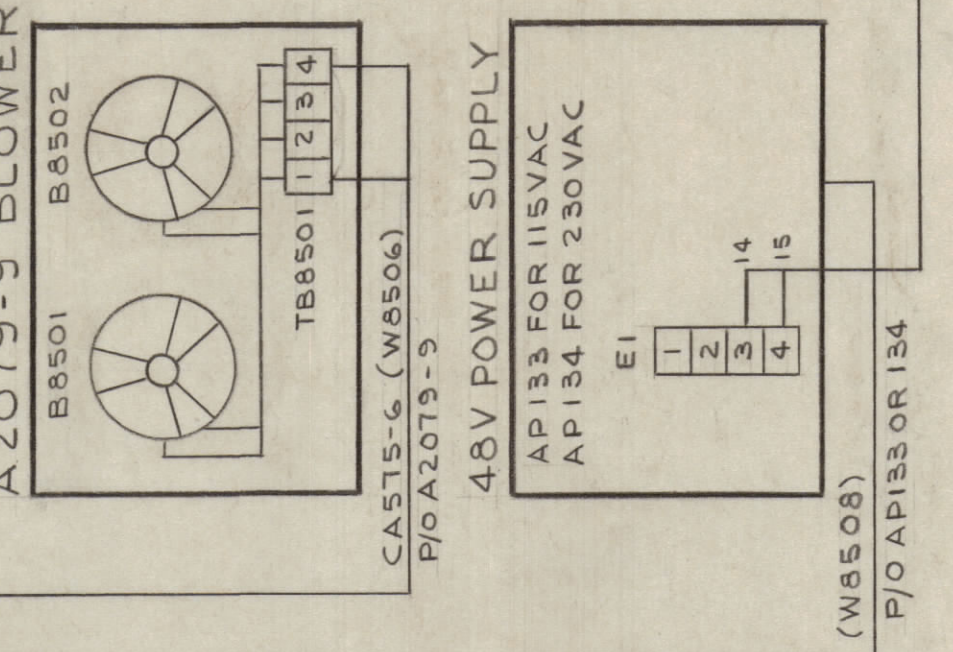
REVISIONS						
ZONE	BYM	DESCRIPTION	DATE	E.M.N. NO.	DRAFT	CHKD
B		COMPLETELY REDRAWN WITH CHANGES	4/6/66	16066	JL	



FUSE CHART

UNIT	SYMBOL	115VAC, 50/60	230VAC, 50/60
CFA-1	F1	2A	1A
GPR9ORXD	F1	2A	1A
MSR-4	F1	3A	1.5A
HPP-1	F9401	10A	5A
	F9402	10A	5A

NOTE: TO IDENTIFY CONNECTORS WITH THE PROPER UNITS, A DASH (-) NO. WILL FOLLOW THE "P" & "TB" NO. OF EACH UNIT AS FOLLOWS.  
 CFA-1 WILL HAVE -1  
 GPR9ORXD -2  
 MSR-4 -3  
 LPP-3-2 -4  
 LSP-4 WILL HAVE -5



Q'TY./UNIT	MODEL USED ON	ASSY. NO.
1	DDR-TJ	

NOTES

THE CONTENTS OF THIS DRAWING ARE THE EXCLUSIVE PROPERTY OF THE TECHNICAL MATERIEL CORP. ITS UNAUTHORIZED USE OR REPRODUCTION IN WHOLE OR IN PART IS STRICTLY FORBIDDEN.

REC'D	ITEM	PART NUMBER	DESCRIPTION	SYMBOL
STURMER LIST OF MATERIAL				
MATERIAL				
THE TECHNICAL MATERIEL CORP. MAMARONECK, NEW YORK				
FINISH				
TITLE WIRING DIAGRAM				
SCALE	CODE	DATE	DATE	DATE
		4/6/66	4/6/66	4/6/66
UNLESS OTHERWISE SPECIFIED DIMENSIONS ARE IN INCHES AND INCLUDE CHEMICALLY APPLIED OR PLATED FINISHES		DRAWN	DATE	FINAL APPROVAL
		J. LESHINSKI	4/6/66	
		CHECKED	DATE	DATE
			4-6-66	
		ELECT. DES.	DATE	DATE
			4-6-66	
		MECH. DES.	DATE	DATE

CK1093B