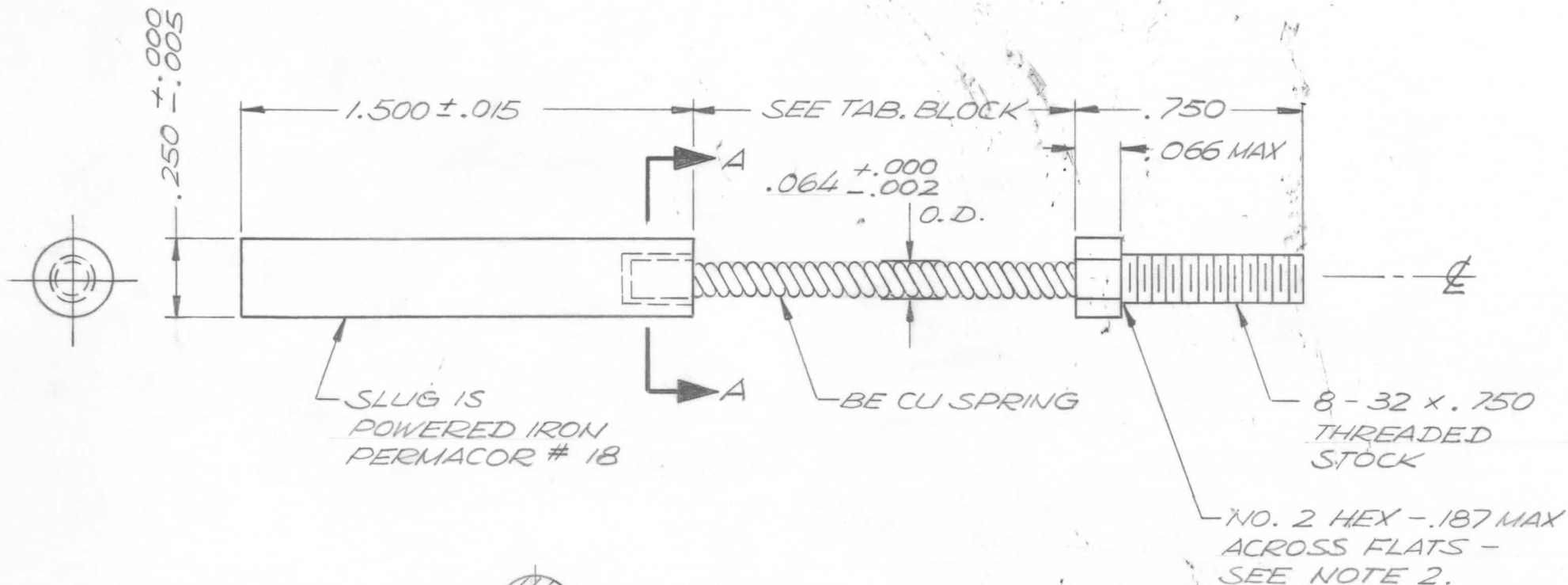


TMC P/N	MFR P/N	LENGTH OF SPRING
CI 141-1	52-6678-16	1.250
CI 141-2	52-6677-16	.500
CI 141-3	52-6679-16	.750

REVISIONS						
ZONE	LTR	DESCRIPTION	DATE	E.M.N.NO	DRAFT	CHKD APPD
	X	EXP. RELEASE	12/5/68		K.H.	
	Ø	ORIG. RELEASE FOR PROD.	12.23.68		RG	HO



NOTES

1. SPRING MUST BE CONCENTRIC WITH CENTER OF SLUG AND SPRING AND INSERT SHOULD BE ON A TRUE CENTER LINE FOR ENTIRE LENGTH.
2. NUT IS FIXED SOLID TO BOTH SPRING AND 8-32 THREADED STOCK
3. Q.D. DOES NOT INCLUDE ANY VARNISH
4. SPRING IS INSULATED FROM SLUG WITH PHENOLIC
5. ELECTRICAL TEST: MUST BE TESTED WITH Q METER AND PERMEABILITY TEST DEVICE SUPPLIED BY MFR.



REQ'D	ITEM	PART NUMBER	DESCRIPTION	SYM.
			LIST OF MATERIAL	
			THE TECHNICAL MATERIEL CORP. MAMARONECK, NEW YORK	
			CORE, TUNING	
			SIZE B	
			CODE IDENT. NO. 82679	
			DWG NO. CI 141	
			ISSUE Ø	
			SCALE 2:1	
			SHEET OF	

QTY / UNIT	MODEL USED ON	ASS'Y NO.
	HFR-4 GPR-10	
APPLICATION		
	CODE S401-330	
NOTICE TO PERSONS RECEIVING THIS DRAWING THE TECHNICAL MATERIEL CORPORATION claims proprietary right in the material disclosed hereon. This drawing is issued in confidence for engineering information only and may not be reproduced or used to manufacture anything shown hereon without permission from THE TECHNICAL MATERIEL CORPORATION to the user. This drawing is loaned for mutual assistance and is subject to recall at any time.		

UNLESS OTHERWISE SPECIFIED DIMENSIONS ARE IN INCHES AND INCLUDE CHEMICALLY APPLIED OR PLATED FINISHES	FINAL APPROVAL	DATE
DECIMALS .X ± .05		
FRACTIONS 1/64		
TOLS. .XX ± .01		
ANGLES 0° -30'		
.XXX ± .005		
MATERIAL SEE TABULATION BLOCK		
FINISH		

MECH. DES.	DATE
ELECT. DES.	DATE
CHECKED	DATE
DRAWN	DATE