

REVISIONS						
ZONE	LTR	DESCRIPTION	DATE	E.M.N.NO	DRAFT	CHKD APPD
	G	INC 136-8 MFG P/N WAS L53-3-CTB4 ON CI 136-9 MFG P/N WAS L53-2-CTB4	9/2/68	H	KM	KD EFM
	H	CI 136-9 OBSOLETE	9-2-74	21170	GSL	Ch Ch

REVISIONS						
SYM	DESCRIPTION	DATE	E.M.N. NO.	DRAFT	CHKD	APPD
X	EXPERIMENTAL RELEASE	7-8-64			SRG	
Ø	ORIGINAL RELEASE FOR PRODUCTION	9-8-64			G.D.L	
A	IT.1,2,3 ADD. ON SPECS; BOBBIN MAT'L P/NCF-1358 DEL "MANUFACTURER..." NOTE ADDED TO SPECS. ON PICT. CALLOUTS OF IT.1,2 & 3 ADDED	10.12.64	12540		JSB	
B	IT(4) ADDED TO B/M; MFG P/N FOR IT(4) ADDED TO CHART	4-30-65	13924		SRG	
C	ADD. P/N CI 136-5, 6 & 7; ADD. "A", "B", "C" & BOBBIN CHART	7-14-66	16534		HCA	
D	CI 136-7 MFG P/N WAS L45-12CTB4. PERM WAS 1.19-1.55. ITA MFG P/N WAS 2.7-005	12.5.66	17392		RME	
E	CI 136-8 & 9 ADDED	9-27-67	18524		ENJ	EFM
F	CI 136-10 ADDED	6.19.68	18965		H.C.	OP

TMC PT. NO.	MFG. PART NO.	FREQ. RANGE	CORE MATERIAL	NO. OF TERMS.	COLOR CODE	PERM.	MFG. PART NO. FOR IT.4
CI 136-1	L57-3CTB4	10KC-400KC	CARBONYL HP	4	GREY	1.45-5.47	27-003
-2	-2CTB4	400KC-10MC	E	4	RED	1.35-3.36	27-004
-3	-2CTB6	400KC-10MC	E	6	RED	1.35-3.36	27-004
-4	L57-6CTB4	10MC-50MC	SF	4	YELLOW	1.32-3.14	27-006
-5	L45-2CTB4	400KC-10MC	E	4	RED	1.35-3.36	27-004
-6	L45-6CTB4	10MC-50MC	CARBONYL SF	4	YELLOW	1.32-3.14	27-006
CI 136-7	L45-22CTB4	50MC-150MC	IRN B	4	GREEN	1.10-1.66	27-012
CI 136-8	L53-3-CTB4	10KC-400KC	CARBONYL HP	4	GREY	1.45-5.47	27-003
CI 136-9	OBSOLETE USE	CI 136-2					
CI 136-10	L57-6CTB6	10MC-50MC	CARBONYL SF	6	YELLOW	1.32-3.14	27-006

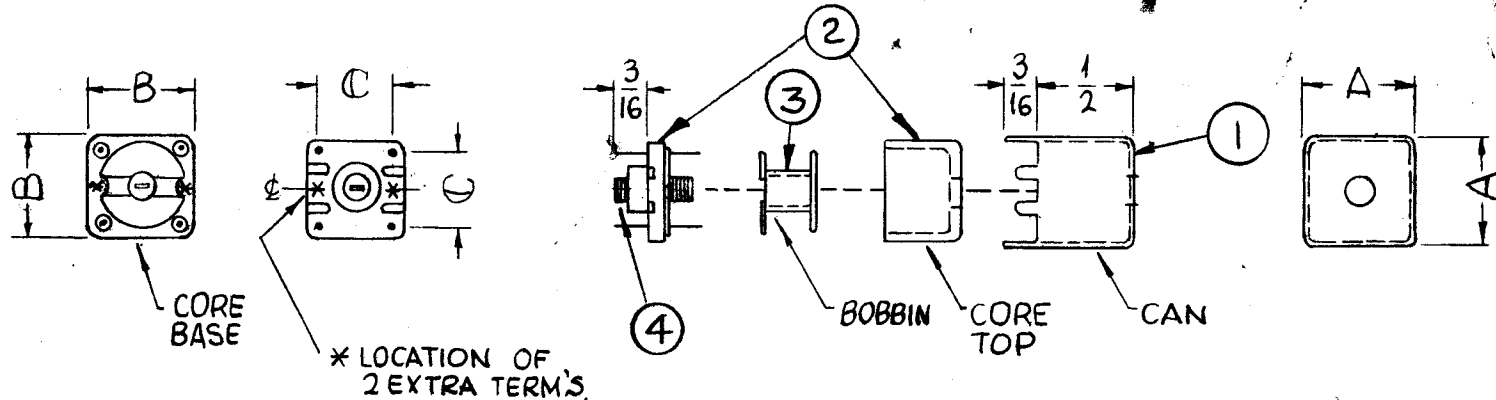
"A" DIM.	"B" DIM.	"C" DIM.	BOBBIN
9/16	.525	.375	CF 135-8
			-8
			-8
9/16	.525	.375	-8
7/16	.406	.275	-16
7/16	.406	.275	-16
7/16	.406	.275	CF 135-16
9/16	.530	.375	CF 135-8
9/16	.525	.375	CF 135-8

SPECIFICATIONS

CAN MATERIAL ~ COPPER, TIN PLATED
 BOBBIN MATERIAL ~ NYLON OR DELRIN
 CORE TOP, CORE BASE & SLUG ~ INDIVIDUAL COLOR CODED (SEE CHART)
 BASE MATERIAL ~ ALKYL WITH TINNED COPPER TERMINALS.
 MANUFACTURER IS TO SUPPLY UNIT ASSEMBLED.

REQ'D.	ITEM	PART NUMBER	DESCRIPTION	SYMBOL
1	4	CI 136-* -SL	SLUG * INSERT NO. PER CHART	
1	3	SEE CHART	BOBBIN	
1	2	CI 136-* -CO	CORE * INSERT NO. PER CHART	
1	1	CI 136-CA	CAN	

GELLMAN		LIST OF MATERIAL	
MATERIAL		THE TECHNICAL MATERIEL CORP. MAMARONECK, NEW YORK	
FINISH		TITLE CORE, CUP, SHIELDED	
UNLESS OTHERWISE SPECIFIED DIMENSIONS ARE IN INCHES AND INCLUDE CHEMICALLY APPLIED OR PLATED FINISHES		DRAWN SRG	DATE 7-8-64
DECIMALS X ± .05 .XX ± .01 .XXX ± .005		CHECKED	DATE 9-9-64
FRACTIONS ± 1/64 ANGLES ± 0° 30'		ELECT. DES.	DATE
TOLERANCES		MECH. DES.	DATE 9/9/64
		FINAL APPROVAL CI 136	
		SHEET	
		REV. LTR.	



STANDARD DRAWING

Q'TY./UNIT	MODEL USED ON	ASS'Y. NO.
SCALE 1:1	CODE C	5401-307

THE CONTENTS OF THIS DRAWING ARE THE EXCLUSIVE PROPERTY OF THE TECHNICAL MATERIEL CORP. ITS UNAUTHORIZED USE OR REPRODUCTION IN WHOLE OR IN PART IS STRICTLY FORBIDDEN.

NOTES

REVISIONS						
ZONE	LTR	DESCRIPTION	DATE	E.M.N.NO	DRAFT	CHKD APPD
	G	ON CI 136-8 MFG P/N WAS L53-3-CB4 ON CI 136-9 MFG P/N WAS L53-2-CB4	9/22/69	#	KH.	KD EFM
	H	CI 136-9 OBSOLETE	9-26-74	21170	G&L	Ch Ch

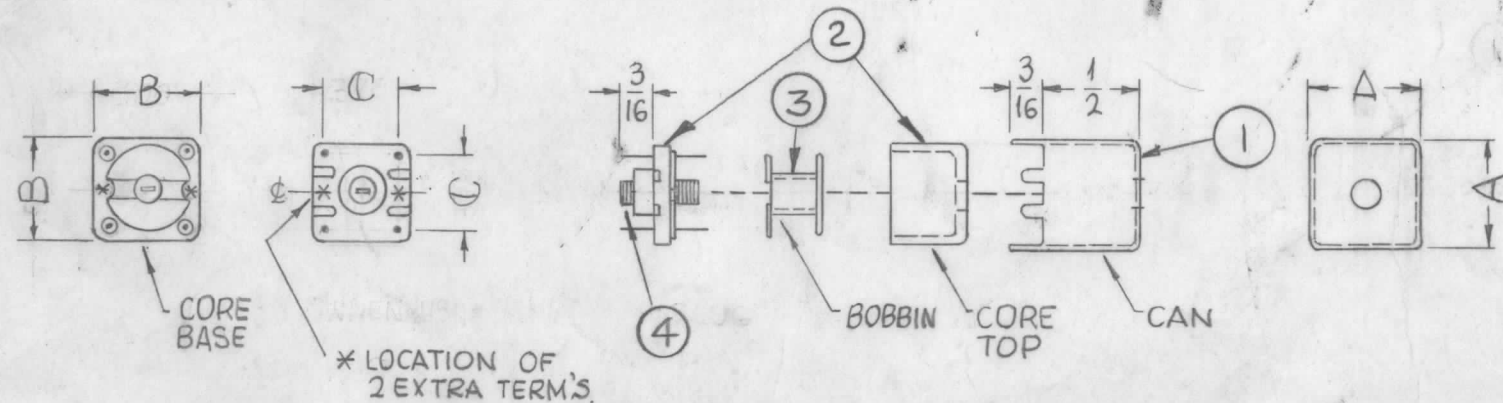
REVISIONS						
SYM	DESCRIPTION	DATE	E.M.N. NO.	DRAFT	CHKD	APPD
X	EXPERIMENTAL RELEASE	7-8-64			SRG	
Ø	ORIGINAL RELEASE FOR PRODUCTION	9-8-64			G.D.L	
A	IT.1,2,3 ADD., ON SPECS: BOBBIN MAT'L P/NCF-135-8 DEL "MANUFACTURER..." NOTE ADDED TO SPECS. ON PICT. CALLOUTS OF IT.1,2 & 3 ADDED	10.12.64	12540		JSB	
B	IT(4) ADDED TO B/M; MFG P/N FOR IT(4) ADDED TO CHART	4-30-65	13924		Phon	
C	ADD. P/N CI 136-5, 6 & 7; ADD. "A", "B", "C" & BOBBIN CHART	7-14-66	16534		HCA	
D	CI 136-7 MFG P/N WAS L45-12 CTB4. PERM WAS 1.19-1.59. IT 4 MFG P/N WAS 27-005	12.5.66	17392		RME	
E	CI 136-8 & 9 ADDED	9-27-67	18524		ENJ	EFM
F	CI 136-10 ADDED	6.19.68	18965		H.S.	OP

CI 136

TMC PT. NO.	MFG. PART NO.	FREQ. RANGE	CORE MATERIAL	NO. OF TERM'S.	COLOR CODE	PERM.	MFG. PART NO. FOR IT.4	"A" DIM.	"B" DIM.	"C" DIM.	BOBBIN
CI 136-1	L57-3CTB4	10KC-400 KC	CARBONYL HP	4	GREY	1.45-5.47	27-003	9/16	.525	.375	CF 135-8
-2	-2CTB4	400KC-10MC	E	4	RED	1.35-3.36	27-004	↑	↑	↑	-8
-3	-2CTB6	400KC-10MC	E	6	RED	1.35-3.36	27-004	↓	↓	↓	-8
-4	L57-6CTB4	10MC-50MC	SF	4	YELLOW	1.32-3.14	27-006	9/16	.525	.375	-8
-5	L45-2CTB4	400KC-10MC	E	4	RED	1.35-3.36	27-004	7/16	.406	.275	-16
-6	L45-6CTB4	10MC-50MC	CARBONYL SF	4	YELLOW	1.32-3.14	27-006	7/16	.406	.275	↓ -16
CI 136-7	L45-22CTB4	50MC-150MC	IRN 8	4	GREEN	1.10-1.66	27-012	7/16	.406	.275	CF 135-16
CI 136-8	L53-3-CTB4	10KC-400KC	CARBONYL HP	4	GREY	1.45-5.47	27-003	9/16	.530	.375	CF 135-8
CI 136-9	OBSOLETE	ETE USE	CI 136-2								
CI 136-10	L57-6CTB6	10MC-50MC	CARBONYL SF	6	YELLOW	1.32-3.14	27-006	9/16	.525	.375	CF 135-8

SPECIFICATIONS

CAN MATERIAL ~ COPPER, TIN PLATED
 BOBBIN MATERIAL ~ NYLON OR DELRIN
 CORE TOP, CORE BASE & SLUG ~ INDIVIDUAL COLOR CODED (SEE CHART)
 BASE MATERIAL ~ ALKYD WITH TINNED COPPER TERMINIALS.
 MANUFACTURER IS TO SUPPLY UNIT ASSEMBLED.



REQ'D.	ITEM	PART NUMBER	DESCRIPTION	SYMBOL
1	4	CI 136-* -SL	SLUG * INSERT NO. PER CHART	
1	3	SEE CHART	BOBBIN	
1	2	CI 136-* -CO	CORE * INSERT NO. PER CHART	
1	1	CI 136-CA	CAN	

GELLMAN LIST OF MATERIAL

MATERIAL		THE TECHNICAL MATERIEL CORP. MAMARONECK, NEW YORK			
FINISH		TITLE CORE, CUP, SHIELDED			
UNLESS OTHERWISE SPECIFIED DIMENSIONS ARE IN INCHES AND INCLUDE CHEMICALLY APPLIED OR PLATED FINISHES		DRAWN	DATE	FINAL APPROVAL	
DECIMALS .X ± .05 .XX ± .01 .XXX ± .005		SRG	7-8-64	KJL	
FRACTIONS ± 1/64 ANGLES ± 0° 30'		CHECKED	DATE	DATE	
TOLERANCES		①	9-9-64	CI 136	
		ELECT. DES.	DATE	H	
		MECH. DES.	DATE	SHEET	
		JC	9/9/64	REV. LTR.	

STANDARD DRAWING

Q'TY./UNIT	MODEL USED ON	ASS'Y. NO.
SCALE 1:1	CODE C	5401-307

THE CONTENTS OF THIS DRAWING ARE THE EXCLUSIVE PROPERTY OF THE TECHNICAL MATERIEL CORP. ITS UNAUTHORIZED USE OR REPRODUCTION IN WHOLE OR IN PART IS STRICTLY FORBIDDEN.

NOTES