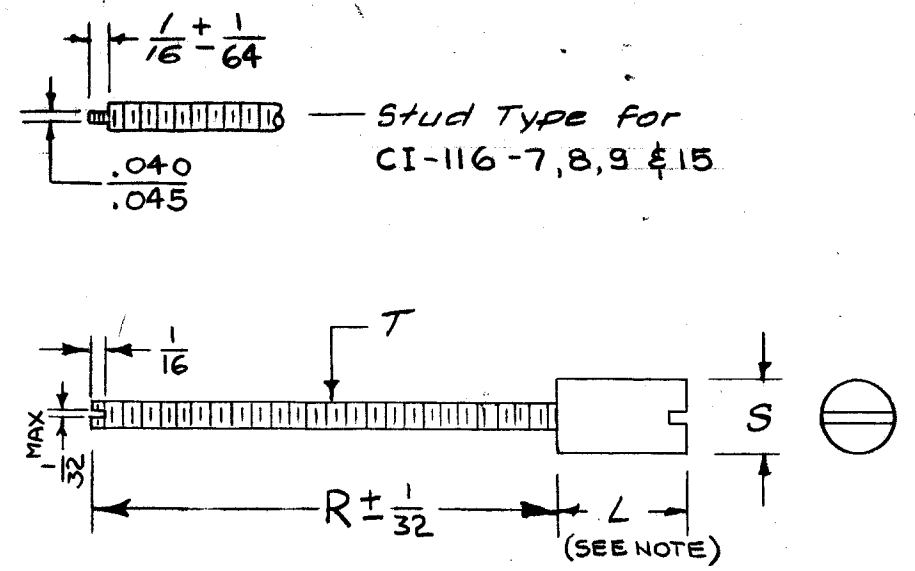


CI-116

PART NO.	FREQ. RANGE (MCS.)	COLOR CODE	DIMENSIONS				CORE MATERIAL	APPROX. TEST FREQ (MC)*	TEST COIL*
			L	S	R	T			
CI-116-1	30 & UP	WHITE	.312	.304 .309	1/8	6-32	IRON 9		
2	DIRECTLY REPLACED BY CI 109 -2								
3	0.2 - 1.5	YELLOW	.312	.304 .309	1/8	6-32	CARBONYL C		
4	30 & UP	WHITE	.312	.195 .200	7/8	3-48	IRON 9		
5	1-20	RED	.312	.195 .200	7/8	3-48	CARBONYL E	4.640	#2
6	0.2 - 1.5	YELLOW	.375	.195 .200	7/8	3-48	CARBONYL C	4.030	#2
7	30 & UP	WHITE	.250	.138 .143	11/16	2-56	IRON 9		
8	1-20	RED	.250	.138 .143	11/16	2-56	CARBONYL E		
9	0.2 - 1.5	YELLOW	.281	.138 .143	11/16	2-56	CARBONYL C		
10	DIRECTLY REPLACED BY CI 109 -13								
11	30 & UP	WHITE	.500	.365 .370	1 1/2	6-32	IRON 9		
12	0.2 - 1.5	YELLOW	.500	.365 .370	1 1/2	6-32	CARBONYL C		
13	20-50	GREEN	.312	.304 .309	1/8	6-32	J		
14	20-50	GREEN	.312	.195 .200	7/8	3-48	J		
15	20-50	GREEN	.250	.138 .143	11/16	2-56	J		
CI-116-16	20-50	GREEN	.500	.365 .370	1 1/2	6-32	CARBONYL J	39.100	#7
CI-116-17	0.2 - 1.5	NONE	.500	.195 .200	1/4	3-48	MP 39	0.660	*1
CI-116-18	1-20	RED	.312	.195 .200	1/8	3-48	CARBONYL E	6.220	*4



CONCENTRICITY - NOT TO EXCEED 0.020 INCH AT ANY POINT NOR 0.009 INCH AT JUNCTION OF CORE AND INSERT.

Stud- Brass, Cadmium Plate

"L" - TOLERANCE - FOR "L" .500 INCH OR LESS ± .0156
- FOR "L" GREATER THAN .500 ± .0312

ISSUE	ITEM	CHANGED FROM	DATE	CH. NO.	DRAFTS	CHECKER	ENG. APP.
5	"L" COLUMN REVISED						
4	CARBONYL ADD TO CORE COLU.						
3	DEC. DIM. MAX. ADDED		7.8.64	11748	hSB	[Signature]	[Signature]
2	NO. C. DIM. (NOTE) ADD.						
1	"L" TOL. NOTE ADDED						
4	MPG. PART COL. DELETED						
3	CONCENTR. NOTE ADDED						
2	INT. COLUMNS ADDED.		5.25.64	11413	hSB	@	[Signature]
1	MATERIAL COLUMNS REV.						
1	CI-116-18 & MATERIAL COLUMNS		2-20-62	6351	G.S.	[Signature]	[Signature]
1	CI-116-18 & MATERIAL COLUMNS		1-2-62	6136	L. L.	[Signature]	[Signature]
1	CI-116-18 & MATERIAL COLUMNS		11-22-61	5949	C.A.	[Signature]	[Signature]
1	Ref. NATIONAL HOLDING added ON CHART CI-116-17 added		8-17-61	5450	G.D.L.	[Signature]	[Signature]

NOTICE TO PERSONS RECEIVING THIS DRAWING

THE TECHNICAL MATERIEL CORPORATION claims proprietary right in the material disclosed hereon. This drawing is issued in confidence for engineering information only and may not be reproduced or used to manufacture anything shown hereon without permission from THE TECHNICAL MATERIEL CORPORATION to the user. This drawing is loaned for mutual assistance and is subject to recall at any time.

Property of:
THE TECHNICAL MATERIEL CORPORATION
MAMARONECK, NEW YORK

* Ref - S 794

REQ. ITEM	PART NO.	DESCRIPTION	SYMBOL
		THE TECHNICAL MATERIEL CORP. MAMARONECK, NEW YORK	
STOCK SIZE		CORE, TUNING	
MATERIAL			
TYPE & TEMPER		HEAT TREAT. SPEC.	DRAWN
FINISH & SPEC. NO.		MECH. DES. APP.	FINAL APPROVAL
		16 ⁸ /5/57	[Signature]
		[Signature]	[Signature]
		[Signature]	CI-116-18

