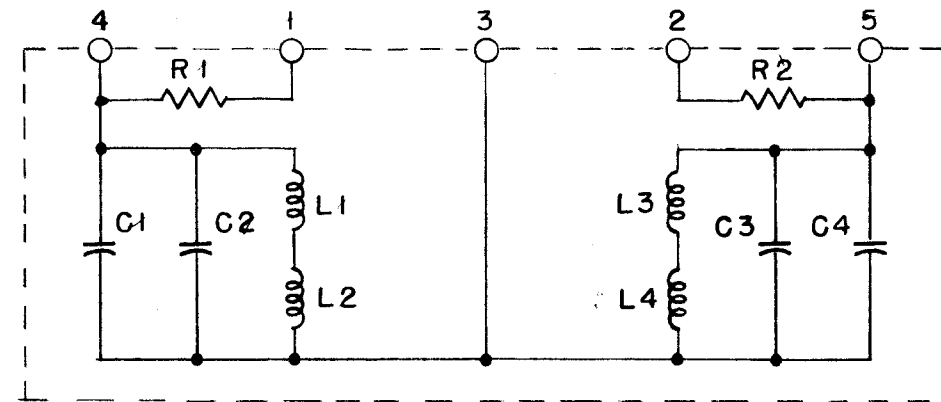


IF IT IS FOUND DESIRABLE TO CHANGE ANY TOLERANCE OR OTHER DETAIL SPECIFIED ON THIS DRAWING NOTIFY THE PURCHASER PROMPTLY.

MAXIMUM ALLOWABLE TOLERANCES HAVE BEEN DETERMINED AND DEVIATIONS WILL BE CAUSE FOR REJECTION. REMOVE ALL BURRS AND SHARP EDGES

CH-128

SCHEMATIC DIAGRAM



VALUE CHART

TMC #	1 Req. C1	1 Req. C2	1 Req. L1	1 Req. L2	1 Req. L3	1 Req. L4	1 Req. C3	1 Req. C4	f res (C1,C2-L1,L2)	f res (C3,C4-L3,L4)	2 Req. R1 & R2
FD-116-425	CM108F20001G	CM108F39000G	CL200B2000F	CL200B2150F	CL200B2300F	CL200B2450F	CM108F20001G	CM108F20001G	516	372	RE100E82001F
FD-116-595	CM108F15001G	—————	CL200B2000F	CL200B1250F	CL200B2000F	CL200B1650F	CM108F20001G	CM108F68000G	737	520	RE100E82001F
FD-116-765	CM108F10001G	—————	CL200B2000F	CL200B1030F	CL200B2000F	CL200B1820F	CM108F15001G	—————	935	680	RE100E82001F
FD-116-935	CM108F15001G	—————	CL200B1520F	—————	CL200B1820F	—————	CM108F20001G	—————	1090	854	RE100E82001F
FD-116-1105	CM108F10001G	—————	CL200B1650F	—————	CL200B1720F	—————	CM108F15001G	—————	1267	1016	RE100E82001F
FD-116-1275	CM108F15001G	—————	CL200B870ROF	—————	CL200B930ROF	—————	CM108F20001G	—————	1424	1191	RE100E82001F
FD-116-1445	CM108F10001G	—————	CL200B1020F	—————	CL200B965ROF	—————	CM108F15001G	—————	1618	1352	RE100E82001F
FD-116-1615	CM108F10001G	—————	CL200B825ROF	—————	CL200B1140F	—————	CM108F10001G	—————	1790	1520	RE100E82001F
FD-116-1785	CM108F68000G	—————	CL200B1020F	—————	CL200B930ROF	—————	CM108F10001G	—————	1955	1688	RE100E82001F
FD-116-1955	CM108F68000G	—————	CL200B870ROF	—————	CL200B1100F	—————	CM108F68000G	—————	2110	1880	RE100E82001F

NOTE: RESONANCE METHOD- INDUCTORS AND CAPACITORS PROCURED FROM MANUFACTURER AND PRECISION ADJUSTED AT T.M.C.

NOTICE TO PERSONS RECEIVING THIS DRAWING

THE TECHNICAL MATERIEL CORPORATION claims proprietary right in the material disclosed hereon. This drawing is issued in confidence for engineering information only and may not be reproduced or used to manufacture anything shown hereon without permission from THE TECHNICAL MATERIEL CORPORATION to the user. This drawing is loaned for mutual assistance and is subject to recall at any time.

Property of:

THE TECHNICAL MATERIEL CORPORATION  
MAMARONECK, NEW YORK

See S-206  
for process

ISSUE	ITEM	CHANGED FROM	DATE	CN. NO.	DRAFTS	CHECKER	ENG. APP.
TOLERANCES		SCALE:					
ALL OTHERS	DEC. DIM. ± FRAC. DIM. ± ANGULAR DIM. ±	DRILL, PUNCH, COMMERCIAL STOCK SIZES AND MANUFACTURERS TOLERANCES ARE NOT INCLUDED.					

FD - 116 -	A - 750	10/8/54
MODEL	PROJECT NO.	ASS'Y. NO.
USED ON		

REQ.	ITEM	PART NO.	DESCRIPTION	SYMBOL
			THE TECHNICAL MATERIEL CORP. MAMARONECK, NEW YORK	
STOCK SIZE			VALUE CHART	FD-116 (*)
MATERIAL		WEIGHT PER PC.	BY RESONANCE METHOD	
TYPE & TEMPER			DRAWN	ELEC. DES. APP.
HEAT TREAT. SPEC.			CHECKED	FINAL APPROVAL
FINISH & SPEC. NO.			A. J. J.	
			CH - 128	