

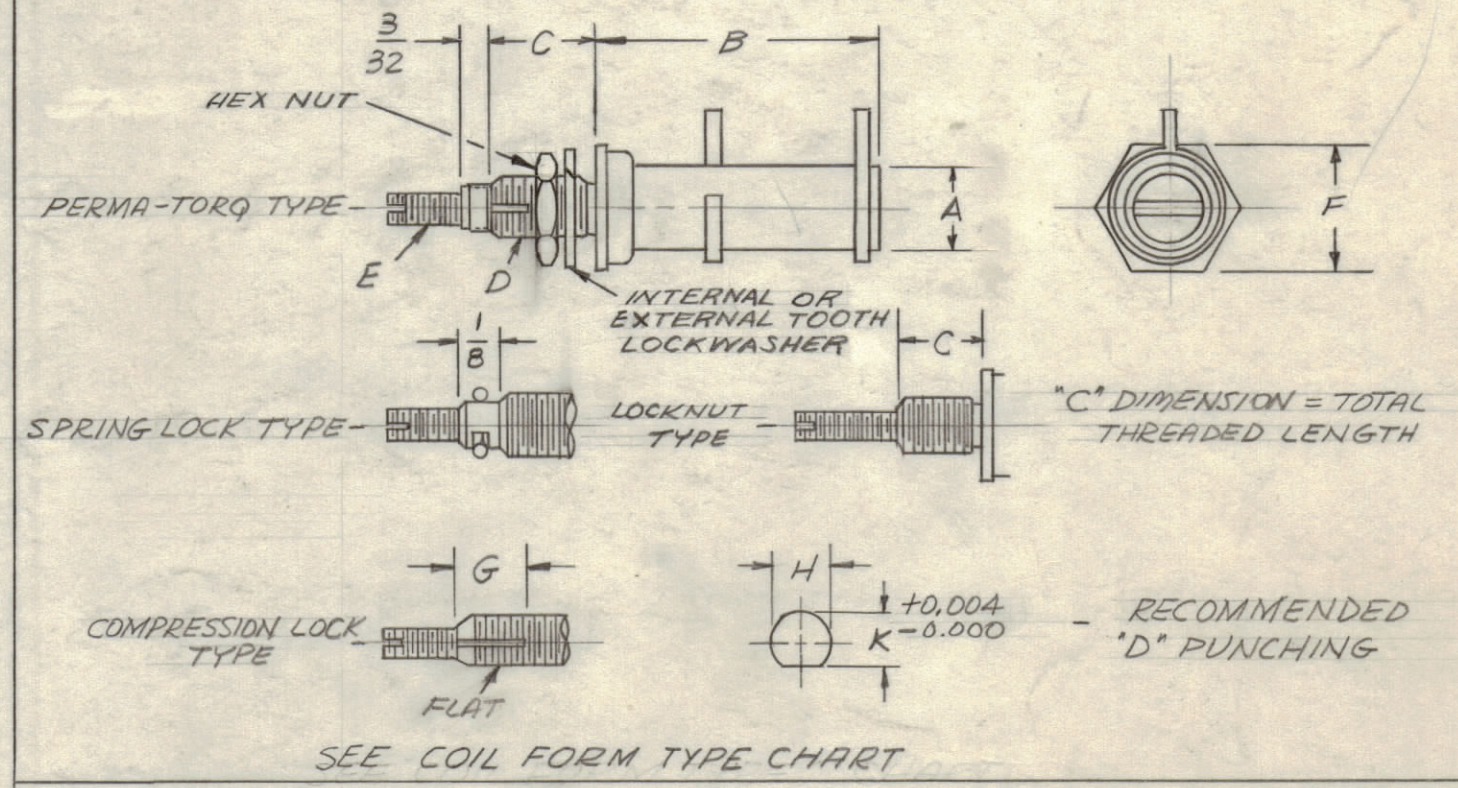
COIL FORM TYPES (W/RING TERMINALS)

| TMC PART NO. | MFG PART NO. | SLUG LOCK TYPE | A | B | C | D | E | F | G | H | K |
|--------------|--------------|----------------|------|---------|-------|--------|------|-----|-------|------|------|
| CF-134-1 | PLST | PERMA-TORQ | .205 | 19/32 | 1/4 | 8-32 | 2-56 | 1/4 | - | .166 | .146 |
| CF-134-2 | LST | LOCK NUT | .205 | 19/32 | 1/4 | 8-32 | 2-56 | 1/4 | - | - | - |
| CF-134-3 | LSTL | LOCKING SPG. | .205 | 19/32 | 1/4 | 8-32 | 2-56 | 1/4 | - | - | - |
| CF-134-4 | SLST | COMP. LOCK | .205 | 19/32 | 21/64 | 8-32 | 2-56 | 1/4 | 5/32 | .166 | .146 |
| CF-134-5 | PLS6 | PERMA-TORQ | .260 | 27/32 | 5/16 | 10-32 | 3-48 | 3/8 | - | .192 | .171 |
| CF-134-6 | LS6 | LOCKING SPG. | .260 | 27/32 | 9/32 | 10-32 | 3-48 | 3/8 | - | - | - |
| CF-134-7 | SLS6 | COMP. LOCK | .260 | 27/32 | 13/32 | 10-32 | 3-48 | 3/8 | 5/32 | .192 | .171 |
| CF-134-8 | PLS5 | PERMA-TORQ | .375 | 1 1/16 | 5/16 | 1/4-28 | 6-32 | 1/2 | - | .252 | .230 |
| CF-134-9 | L55 | LOCKING SPG. | .375 | 1 1/16 | 9/32 | 1/4-28 | 6-32 | 1/2 | - | - | - |
| CF-134-10 | SLS5 | COMP. LOCK | .375 | 1 1/16 | 27/64 | 1/4-28 | 6-32 | 1/2 | 13/64 | .252 | .230 |
| CF-134-11 | PLST | PERMA-TORQ | .500 | 1 11/16 | 5/16 | 1/4-28 | 6-32 | 5/8 | - | .252 | .230 |
| CF-134-12 | L57 | LOCKING SPG. | .500 | 1 11/16 | 5/16 | 1/4-28 | 6-32 | 5/8 | - | - | - |
| CF-134-13 | SLST | COMP. LOCK | .500 | 1 11/16 | 29/64 | 1/4-28 | 6-32 | 5/8 | 13/64 | .252 | .230 |
| 14 | | | | | | | | | | | |
| 15 | | | | | | | | | | | |
| 16 | | | | | | | | | | | |
| 17 | | | | | | | | | | | |
| 18 | | | | | | | | | | | |
| 19 | | | | | | | | | | | |
| 20 | | | | | | | | | | | |

TUNING SLUG

| TMC CODE | MFG PART NO. | COIL FORMS | FREQ. RANGE | COLOR CODE | TMC PART NO. |
|----------|--------------|---------------------------------|-------------|------------|--------------|
| A | 20063-A | LS3, PLS5, L55, SLS5 | 30# UP | WHITE | CI-116-1 |
| B | 20063-B | LS3, PLS5, L55, SLS5 | 1-20 | RED | CI-116-2 |
| C | 20063-C | LS3, PLS5, L55, SLS5 | 0.2-1.5 | YEL. | CI-116-3 |
| D | 20063-D | PLS6, LS6, SLS6, L58, LSM, LSML | 30# UP | WHITE | CI-116-4 |
| E | 20063-E | PLS6, LS6, SLS6, L58, LSM, LSML | 1-20 | RED | CI-116-5 |
| F | 20063-F | PLS6, LS6, SLS6, L58, LSM, LSML | 0.2-1.5 | YEL. | CI-116-6 |
| G | 20063-G | PLST, LST, SLST, LSTL | 30# UP | WHITE | CI-116-7 |
| H | 20063-H | PLST, LST, SLST, LSTL | 1-20 | RED | CI-116-8 |
| I | 20063-I | PLST, LST, SLST, LSTL | 0.2-1.5 | YEL. | CI-116-9 |
| K | 20063-K | PLS7, LS7, SLS7, LS4 | 1-20 | WHITE | CI-116-10 |
| L | 20063-L | PLS7, LS7, SLS7, LS4 | 30# UP | RED | CI-116-11 |
| M | 20063-M | PLS7, LS7, SLS7, LS4 | 0.2-1.5 | YEL. | CI-116-12 |
| N | 20063-N | LS3, PLS5, L55, SLS5 | 20-50 | GRN. | CI-116-13 |
| O | 20063-O | PLS6, LS6, SLS6, L58, LSM, LSML | 20-50 | GRN. | CI-116-14 |
| P | 20063-P | PLST, LST, SLST, LSTL | 20-50 | GRN. | CI-116-15 |
| Q | 20063-Q | PLS7, LS7, SLS7, LS4 | 20-50 | GRN. | CI-116-16 |

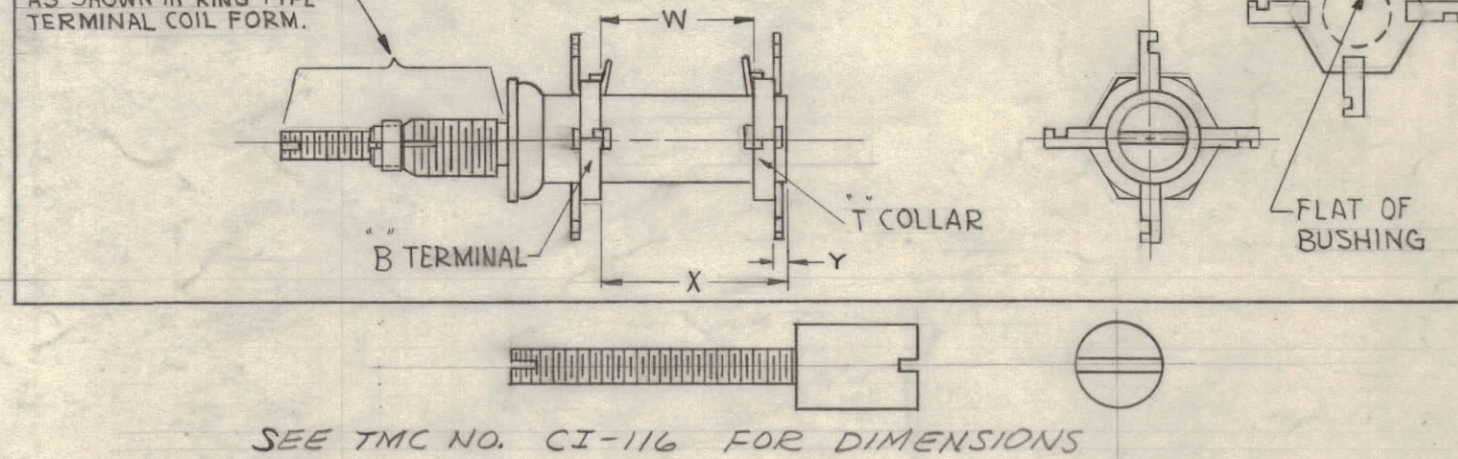
RING TYPE TERMINALS
CF-134-1 THRU CF-134-19



COIL FORM TYPES (W/SILICONE-FIBERGLASS TERM. COLLARS)

| TMC PART NO. | MFG PART NO. | SLUG LOCK TYPE | TOTAL NO. OF COLLARS | WITH B COLLAR | WITH T COLLAR | NO. OF LUGS PER COLLAR | TOTAL NO. OF LUGS | A | B | C | D | E | F | G | H | K | W | X | Y |
|--------------|--------------|----------------|----------------------|---------------|---------------|------------------------|-------------------|------|-------|------|-------|------|-----|---|------|------|---|-----|---|
| CF-134-20 | PLS6 | PERMA-TORQ | 1 | YES | NO | 4 | 4 | .260 | 27/32 | 5/16 | 10-32 | 3-48 | 3/8 | 1 | .192 | .171 | - | 1/2 | - |

COLLAR TYPE TERMINALS
CF-134-20 AND UP



NOTICE TO PERSONS RECEIVING THIS DRAWING

THE TECHNICAL MATERIEL CORPORATION claims proprietary right in the material disclosed hereon. This drawing is issued in confidence for engineering information only and may not be reproduced or used to manufacture anything shown hereon without permission from THE TECHNICAL MATERIEL CORPORATION to the user. This drawing is loaned for mutual assistance and is subject to recall at any time.

Property of:

THE TECHNICAL MATERIEL CORPORATION
MAMARONECK, NEW YORK

NOMENCLATURE TO BE IN THE FOLLOWING FORM:-

CF-134-1-A

BASIC NUMBER / TUNING SLUG (SEE CHART)

STANDARD DRAWING

| REQ. ITEM | PART NO. | J. ANGER | DESCRIPTION | SYMBOL |
|-----------|----------|----------|--|--------|
| | | | THE TECHNICAL MATERIEL CORP. MAMARONECK, NEW YORK | |
| | | | COIL FORM, CERAMIC | |
| | | | MATERIAL | |
| | | | DRAWN | |
| | | | CHECKED | |
| | | | FINAL APPROVAL | |
| | | | CF-134 | A |
| | | | SHEET OF | |
| | | | ELEC. DES. APP. | |
| | | | MECH. DES. APP. | |
| | | | | |

| SYM | ZONE | DESCRIPTION | DATE | CH. NO. | DRAFTS | CHECKER | ENG. APP. |
|-----|------|------------------------------------|---------|---------|--------|----------|-----------|
| A | | HEX NUT & WASHER ADDED TO CL. FORM | 7-21-67 | 18409 | UW | J. ANGER | R.H. |

UNLESS OTHERWISE SPECIFIED:
DIMENSIONS ARE IN INCHES
TOLERANCES ON
FRACTIONS ± 1/64 DECIMALS ± .005 ANGLES ± 1/2°

SCALE 5401-167

MAXIMUM ALLOWABLE TOLERANCES HAVE BEEN DETERMINED AND ANY DEVIATIONS WILL BE CAUSE FOR REJECTION. REMOVE ALL BURRS & SHARP EDGES

| REQ. PER UNIT | MODEL | SECTION | ASS'Y. NO. | DATE |
|---------------|-------|---------|------------|---------|
| | HFR-1 | | | 7-26-62 |