

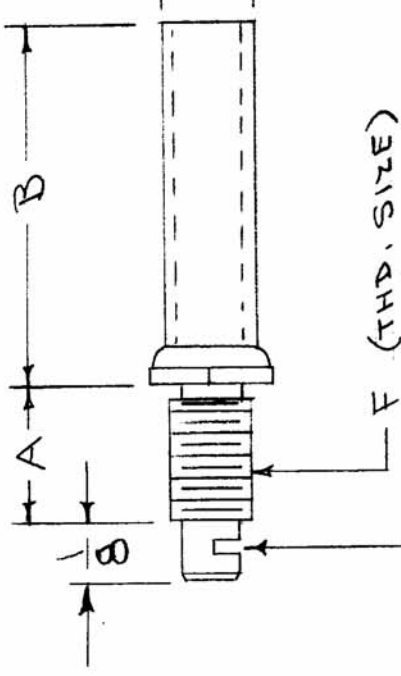
IF IT IS FOUND DESIRABLE TO CHANGE ANY TOLERANCE OR OTHER DETAIL SPECIFIED ON THIS DRAWING NOTIFY THE PURCHASER PROMPTLY.

MAXIMUM ALLOWABLE TOLERANCES HAVE BEEN DETERMINED AND DEVIATIONS WILL BE CAUSE FOR REJECTION. REMOVE ALL BURRS AND SHARP EDGES

| TMC NO.  | CAT. NO. | A    | B     | C    | D    | E   | F      | MATERIAL | G.   |
|----------|----------|------|-------|------|------|-----|--------|----------|------|
| CF-114-1 | LSG      | 9/32 | 27/32 | .260 | .205 | 3/8 | 10-32  | L-5      | 3-48 |
| CF-114-2 | LS5      | 9/32 | 17/16 | .375 | .313 | 1/2 | 1/4-28 | L-5      | 6-32 |
| CF-114-3 | LS7      | 5/16 | 11/16 | .500 | .375 | 5/8 | 1/4-28 | L-5      | 6-32 |

NOTICE TO PERSONS RECEIVING THIS DRAWING  
 THE TECHNICAL MATERIEL CORPORATION claims proprietary right in the material disclosed hereon. This drawing is issued in confidence for engineering information only and may not be reproduced or used to manufacture anything shown hereon without permission from THE TECHNICAL MATERIEL CORPORATION. assistance and is subject to recall at any time.

Property of:  
 THE TECHNICAL MATERIEL CORPORATION  
 MAMARONECK, NEW YORK



KEYWAY FOR LOCKING SPRING  
 WTG. HARDWARE & LOCKING SPRING TO BE FURNISHED BY HEBER.

REF: CAMBRIDGE THERMIONIC CORP. OR EQUIVA

CF-114 A

USED ON  
 PROJECT NO.  
 ASSY. NO.  
 DATE

| REQ. PER UNIT | MODEL | PROJECT NO. | ASSY. NO. | DATE |
|---------------|-------|-------------|-----------|------|
|               | G.    |             |           |      |

| REQ. ITEM | PART NO. | DESCRIPTION  | SYMBOL |
|-----------|----------|--|--------|
|           |          | THE TECHNICAL MATERIEL CORP.<br>MAMARONECK, NEW YORK |        |
|           |          | COIL FORM  |        |
|           |          | w/o SLUG   |        |
|           |          | WGT PER PC.  |        |
|           |          | TYPE & TEMPER  |        |
|           |          | ELEC. DES. APP.                                      |        |
|           |          | CHECKED  |        |
|           |          | FINAL APPROVAL                                       |        |

| ISSUE ITEM | CHANGED FROM  | DATE   | CN. NO. | DRAFTS CHECKER | ENG. APP. |
|------------|---|--------|---------|----------------|-----------|
| A          | ON CHART DIMS "C" & "D" CLARIFIED, DIM. ±.005 ADDED | 1-9-63 | 7992    | Yoe            | Yoe       |

TOLERANCES  
 DEC. DIM. ±  
 ALL FRACTIONAL DIM. ±  
 OTHERS ANGULAR DIM. ±

SCALE  
 DRILL, PUNCH, COMMERCIAL STOCK SIZES AND MANUFACTURERS TOLERANCES ARE NOT INCLUDED.