

STANDARD DRAWING

CF-10008

IF IT IS FOUND DESIRABLE TO CHANGE ANY TOLERANCE OR OTHER DETAIL SPECIFIED ON THIS DRAWING NOTIFY THE PURCHASER PROMPTLY.

MAXIMUM ALLOWABLE TOLERANCES HAVE BEEN DETERMINED AND DEVIATIONS WILL BE CAUSE FOR REJECTION. REMOVE ALL BURRS AND SHARP EDGES

USED ON

MODEL

PROJECT NO.

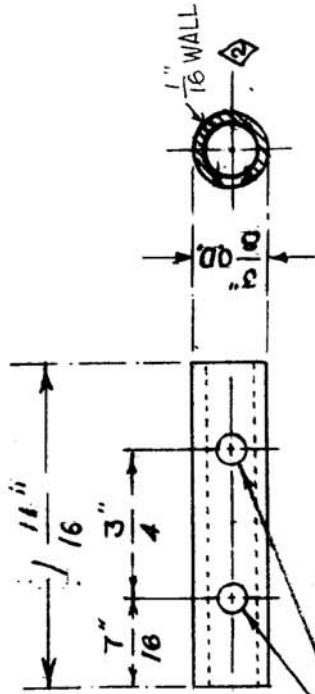
DATE

AMC6-2

AMC6-3

CL-10002 JUNE 24-55

CL-10003 Aug 14, 1956



2 HOLES - TAP FOR 4-40 MS

◇ ONE WALL ONLY

REF. DIAMOND STATE FIBRE

REQ. ITEM	PART NO.	DESCRIPTION	SYMBOL
		TMC (Canada) LIMITED OTTAWA ONTARIO	
		COIL FORM	
		AMC 6 - SERIES 2 & 3	
		M.A.C.	
		DRAWN	ELEC. DES. APP. MECH. DES. APP.
		T.H.	era
		CHECKED	FINAL APPROVAL
		CL-10 002	CF-10008
		CL-10 003	

STOCK SIZE	MATERIAL	WEIGHT-PCY.	TYPE & TEMPER	HEAT TREAT. SPEC.	FINISH & SPEC. NO.
3 OD BAKELITE TUBING	1/16" WALL				

ISSUE ITEM	CHANGED FROM	DATE	CN. NO.	DRAFTS CHECKER	ENG. APP.	SCALE
2	SECTION CORRECTED	25/8/55		EG		
1	ONE WALL ONLY					

ALL OTHERS	DEC. DIM. ±	FRAC. DIM. ±	ANGULAR DIM. ±

DRILL, PUNCH, COMMERCIAL STOCK SIZES AND MANUFACTURERS TOLERANCES ARE NOT INCLUDED.