

# STANDARD DRAWING

CF-10002A

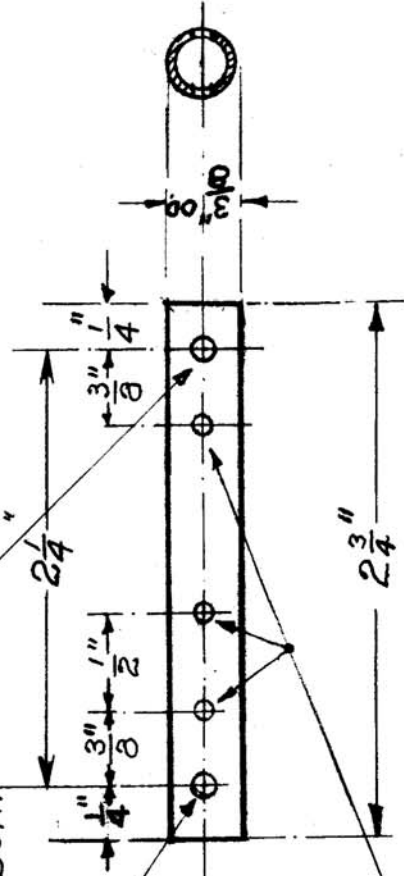
IF IT IS FOUND DESIRABLE TO CHANGE ANY TOLERANCE OR OTHER DETAIL SPECIFIED ON THIS DRAWING NOTIFY THE PURCHASER PROMPTLY.

MAXIMUM ALLOWABLE TOLERANCES HAVE BEEN DETERMINED AND DEVIATIONS WILL BE CAUSE FOR REJECTION. REMOVE ALL BURRS AND SHARP EDGES

USED ON

MODEL	PROJECT NO.	ASSY. NO.	DATE
AMC6-2			21-3-55
AMC6-10			
AMC6-3			

2 MOUNTING HOLES  
 #33 DRILL HOLES-THROUGH BOTH WALLS



\*A3 DRILL - THROUGH ONE WALL ONLY - 3 HOLES TAPPED 4-40

## NOTICE TO PERSONS RECEIVING THIS DRAWING

THE TECHNICAL MATERIEL CORPORATION claims proprietary right in the material disclosed hereon. This drawing is issued in confidence for engineering information only and may not be reproduced or used to manufacture anything shown hereon without permission from THE TECHNICAL MATERIEL CORPORATION to the user. This drawing is loaned for mutual assistance and is subject to recall at any time.

Property of:

THE TECHNICAL MATERIEL CORPORATION  
 MAMARONECK, NEW YORK

CHANGED FROM	DATE	CN. NO.	DRAFTS CHECKER	ENG. APP.
*43 DRILL WAS	36/5/57	35	L.M.	AK
TOLERANCES				
SCALE				

DEC. DIM.  $\pm \frac{1}{64}$   
 FRACTIONAL DIM.  $\pm \frac{1}{64}$   
 ANGULAR DIM.  $\pm$

DRILL, PUNCH, COMMERCIAL STOCK SIZES AND MANUFACTURERS TOLERANCES ARE NOT INCLUDED.

REF: DIAMOND STATE FIBRE

REQ. ITEM	PART NO.	DESCRIPTION	SYMBOL
$3 \frac{3}{8} \phi \times 2 \frac{3}{4} \text{ long}$		TMC (Canada) LIMITED OTTAWA ONTARIO	
STOCK SIZE		AMC6-2 & 3	
MATERIAL	WEIGHT PER PC.	COIL FORM - RF	
BARELITE TWISING		E.W.B.G.	
TYPE & TEMPER		DRAWN	
		ELEC. DES. APP.	
HEAT TREAT. SPEC.		CHECKED	
		FINAL APPR VAL	
FINISH & SPEC. NO.		(DL-10001)	CF-10002