

IF FOUND DESIRABLE TO CHANGE ANY TOLERANCE OR OTHER DETAIL SPECIFIED ON THIS DRAWING NOTIFY THE PURCHASER PROMPTLY.

RANGES ALLOWABLE TOLERANCES HAVE BEEN DETERMINED AND DEVIATIONS WILL BE CAUSE FOR REJECTION. REMOVE ALL BURRS AND SHARP EDGES

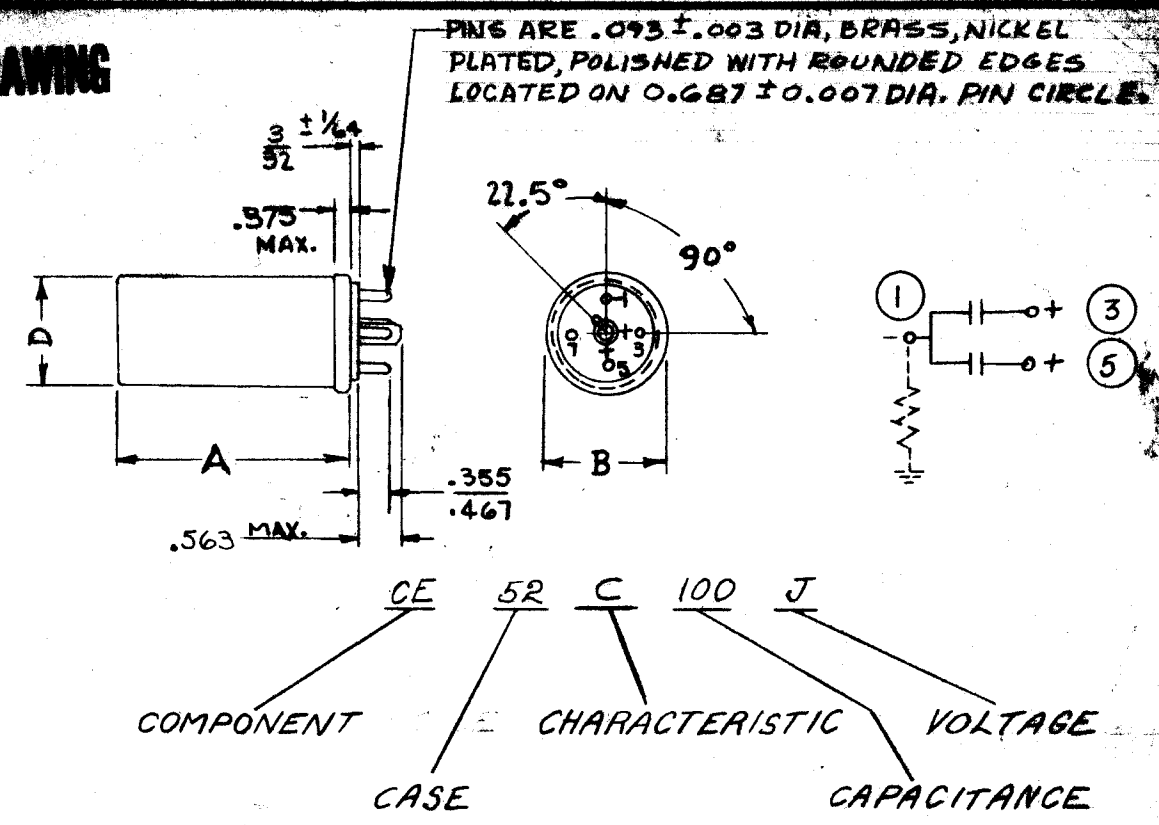
# STANDARD DRAWING

CE52 D

TYPE DESIGNATION	RATED CAPACITANCE	AVAILABLE CASE SIZE
CE52C100J	10-10	T1
CE52C250J	25-25	T1
CE52C550J	55-55	T1
CE52C600J	60-60	T2
CE52C900J	90-90	T3
CE52C121J	120-120	T4
CE52C161J	160-160	T5
CE52C100K	10-10	T1
CE52C250K	25-25	T1
CE52C450K	45-45	T1
CE52C500K	50-50	T2
CE52C750K	75-75	T3
CE52C900K	90-90	T4
CE52C121K	120-120	T5
CE52C100M	10-10	T1
CE52C250M	25-25	T1
CE52C350M	35-35	T1
CE52C400M	40-40	T2
CE52C550M	55-55	T3
CE52C700M	70-70	T4
CE52C750M	75-75	T5
CE52C100N	10-10	T1
CE52C200N	20-20	T1
CE52C300N	30-30	T1
CE52C350N	35-35	T2
CE52C450N	45-45	T3
CE52C550N	55-55	T4
CE52C700N	70-70	T5
CE52C100P	10-10	T1
CE52C200P	20-20	T1
CE52C250P	25-25	T1

TYPE DESIGNATION	RATED CAPACITANCE	AVAILABLE CASE SIZE
CE52C350P	35-35	T3
CE52C450P	45-45	T4
CE52C550P	55-55	T5
CE52C100Q	10-10	T1
CE52C160Q	16-16	T1
CE52C200Q	20-20	T2
CE52C300Q	30-30	T3
CE52C350Q	35-35	T4
CE52C450Q	45-45	T5
CE52C100R	10-10	T1
CE52C160R	16-16	T1
CE52C200R	20-20	T2
CE52C250R	25-25	T3
CE52C300R	30-30	T4
CE52C350R	35-35	T5

VOLTAGE DESIGNATION	
J	150VDC
K	200VDC
M	250VDC
N	300VDC
P	350VDC
Q	400VDC
R	450VDC



CASE SIZE	DIMENSIONS IN INCHES		
	A (±1/64)	B (+0.010 / -0.050)	D (±1/64)
T1	2 1/2	1 1/4	1 3/32
T2	2 1/2	1 1/2	1 3/8
T3	3	1 1/2	1 3/8
T4	3 1/2	1 1/2	1 3/8
T5	4 1/4	1 1/2	1 3/8

CHARACTERISTIC	
DESIGNATION	OPER. TEMP. RANGE
C	-40 TO +85°C

NOTE: FOR MAX. IMP. AT MIN. TEMPERATURE & MAX. RMS RIPPLE AT 120 CPS SEE SPECIFICATION MIL-C-62B.

REF: CAPACITOR TO BE IN ACCORDANCE WITH MIL-C-62B AND AMEND.

NOTE: The nominal capacitance is designated by a 3-digit number. The first two digits of the designation are the first two figures of the nominal capacitance in MICROFARADS. The third digit indicates the number of zeros following the figures of the nominal capacitance already described by the first two digits of the designations.

D	ADDED VOLTAGE PART	6306	LAK	RIN
1	DATE	EN. NO.	DRAFTS	CHECKED
SCALE:				
DRILL PUNCH, COMMERCIAL STOCK SIZES AND MANUFACTURERS TOLERANCES ARE NOT INCLUDED.				

REQ.	ITEM	PART NO.	DESCRIPTION	SYMBOL
			THE TECHNICAL MATERIEL CORP. MAMARONECK, NEW YORK	
			CAPACITOR; DRY ELECTROLYTIC	
			POLARIZED	
			L.M. B. 10/1/52	
			DRAWN	
			ELSK 10/1/52	
			CE52 D	

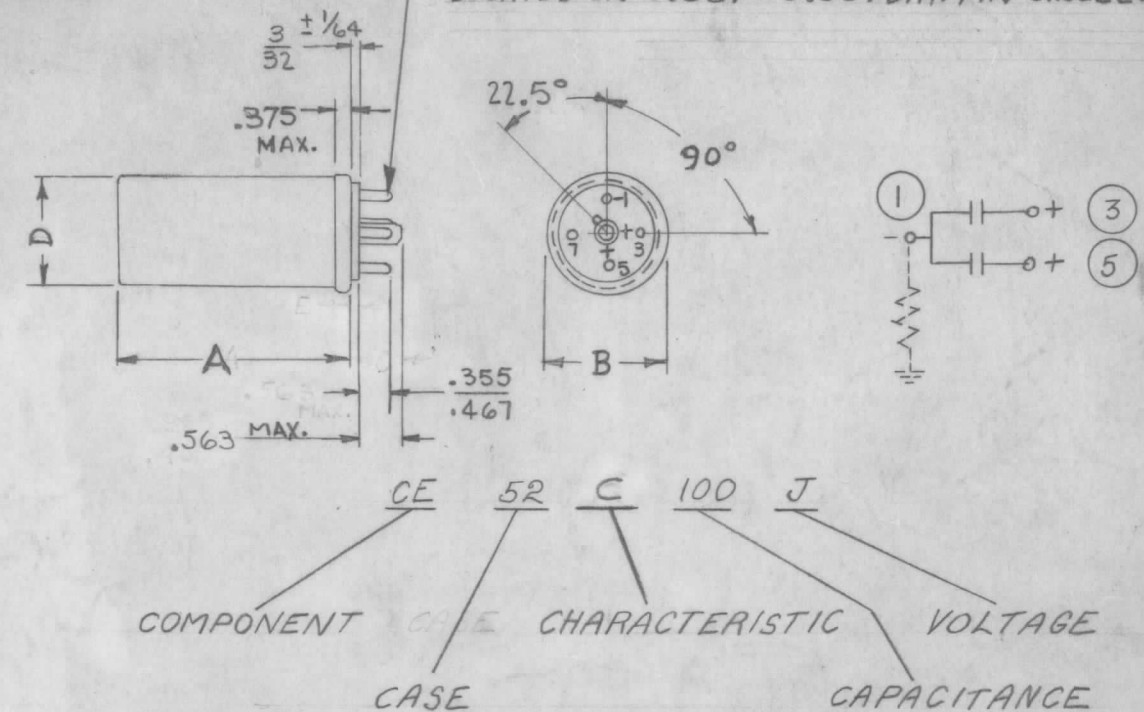
IF IT IS FOUND DESIRABLE TO CHANGE ANY TOLERANCE OR OTHER DETAIL SPECIFIED ON THIS DRAWING NOTIFY THE PURCHASER PROMPTLY.

MAXIMUM ALLOWABLE TOLERANCES HAVE BEEN DETERMINED AND DEVIATIONS WILL BE CAUSE FOR REJECTION. REMOVE ALL BURRS AND SHARP EDGES

# STANDARD DRAWING

CE52 D

PINS ARE .093 ± .003 DIA, BRASS, NICKEL PLATED, POLISHED WITH ROUNDED EDGES LOCATED ON 0.687 ± 0.007 DIA. PIN CIRCLE.



VOLTAGE DESIGNATION	
J	150 VDC
K	200VDC
M	250VDC
N	300VDC
P	350VDC
Q	400VDC
R	450VDC

TYPE DESIGNATION	RATED CAPACITANCE	AVAILABLE IN CASE SIZE
CE52C100J	150	10-10 T1
CE52C250J	150	25-25 T1
CE52C550J	150	55-55 T1
CE52C600J	150	60-60 T2
CE52C900J	150	90-90 T3
CE52C121J	150	120-120 T4
CE52C161J	150	160-160 T5
CE52C100K	200	10-10 T1
CE52C250K	200	25-25 T1
CE52C450K	200	45-45 T1
CE52C500K	200	50-50 T2
CE52C750K	200	75-75 T3
CE52C900K	200	90-90 T4
CE52C121K	200	120-120 T5
CE52C100M	250	10-10 T1
CE52C250M	250	25-25 T1
CE52C350M	250	35-35 T1
CE52C400M	250	40-40 T2
CE52C550M	250	55-55 T3
CE52C700M	250	70-70 T4
CE52C750M	250	75-75 T5
CE52C100N	300	10-10 T1
CE52C200N	300	20-20 T1
CE52C300N	300	30-30 T1
CE52C350N	300	35-35 T2
CE52C450N	300	45-45 T3
CE52C550N	300	55-55 T4
CE52C700N	300	70-70 T5
CE52C100P	350	10-10 T1
CE52C200P	350	20-20 T1
CE52C250P	350	25-25 T2

TYPE DESIGNATION	RATED CAPACITANCE	AVAILABLE IN CASE SIZE
CE52C350P	350	35-35 T3
CE52C450P	350	45-45 T4
CE52C550P	350	55-55 T5
CE52C100Q	400	10-10 T1
CE52C160Q	400	16-16 T1
CE52C200Q	400	20-20 T2
CE52C300Q	400	30-30 T3
CE52C350Q	400	35-35 T4
CE52C450Q	400	45-45 T5
CE52C100R	450	10-10 T1
CE52C160R	450	16-16 T1
CE52C200R	450	20-20 T2
CE52C250R	450	25-25 T3
CE52C300R	450	30-30 T4
CE52C350R	450	35-35 T5

CASE SIZE	DIMENSIONS IN INCHES		
	A ( $\pm 1/64$ )	B ( $^{+0.010}_{-0.050}$ )	D ( $\pm 1/64$ )
T1	2 1/2	1 1/4	1 5/32
T2	2 1/2	1 1/2	1 3/8
T3	3	1 1/2	1 3/8
T4	3 1/2	1 1/2	1 3/8
T5	4 1/4	1 1/2	1 3/8

CHARACTERISTIC	
DESIGNATION	OPER. TEMP. RANGE
C	-40 TO +85°C

NOTE:  
 FOR MAX. IMP. AT MIN. TEMPERATURE & MAX. RMS RIPPLE AT 120 CPS SEE SPECIFICATION MIL-C-62B.

REF: CAPACITOR TO BE IN ACCORDANCE WITH JAN SPEC MIL-C-62B AND AMEND.

NOTE: The nominal capacitance is designated by a 3-digit number. The first two digits of the designation are the first two figures of the nominal capacitance in MICROFARADS. The third digit indicates the number of zeros following the figures of the nominal capacitance already described by the first two digits of the designations.

D	ADDED VOLTAGE CHART	6-30-61	18352	L.A.K.	R.H.		
C	DELETED RATED DC VOLTS	6-12-63	924G				
ISSUE	ITEM	CHANGED FROM	DATE	CN. NO.	DRAFTS	CHECKER	ENG. APP.
TOLERANCES		SCALE:					
ALL OTHERS	DEC. DIM. $\pm$	DRILL, PUNCH, COMMERCIAL STOCK SIZES AND MANUFACTURERS TOLERANCES ARE NOT INCLUDED.					
	FRAC. DIM. $\pm$						
	ANGULAR DIM. $\pm$						
MODEL		PROJECT NO.		ASS'Y. NO.		DATE	
USED ON							

REQ.	ITEM	PART NO.	DESCRIPTION	SYMBOL
			THE TECHNICAL MATERIEL CORP. MAMARONECK. NEW YORK	
			CAPACITOR; DRY ELECTROLYTIC	
			POLARIZED	
			DATE: 8/21/52	
			DRAWN	MECH. DES. APP.
			CHECKED	FINAL APPROVAL
				CE52 D