

TMC BASIC PART NUMBER	MFR'S. BASIC PART NUMBER (See Note 1)	CAP. uf.	VDCW	CASE SIZE (Including Sleeve)	
				D $\pm 1/16$	L $\pm 3/16$ $-1/16$
CE 116-1V-	BR8-250V	8	250	9/16	1-19/32
CE 116-2V-	BR2000-6V	2000	6	13/16	2-5/32
CE 116-3V-	BR8-350V	8	350	11/16	1-19/32
CE 116-4V-	BR20-250V	20	250	13/16	1-19/32
CE 116-5V-	BR2000-25V	2000	25	15/16	2-11/16
CE 116-6V-	BR500-15V	500	15	1/2	1-9/16
CE 116-7V-	BR100-150V	100	150	7/8	2
CE 116-8V-	BR1000-50V	1000	50	1	2-11/16
CE 116-9V-	BR2000-12V	2000	12	25/32	2-3/16
CE 116-10V-	BR500-50V	500	50	15/16	1-7/8
CE 116-11V-	BR30-450V	80	450	1 1/16	3 3/4
CE 116-12V	BR20-350V	20	350	13/16	1-5/8
CE 116-13V	BR1000-25V	1000	25	3/4	2
CE 116-14V	BR 50-450V	50	450	1	2-11/16
CE 116-15V	BR150-50V	150	50	5/8	1-7/16
CE 116-16V	BR 50-50V	50	50	1/2	1-1/16
CE 116-17V	BR 5000-15V	5000	15	1-1/32	2 1/4
CE 116-18V	BBR 12-250	12	25 $\phi$	3/4	1 7/16
CE 116-19V	BR 5000-75V	1000MF	75	1"	2 1/2

SYMBOL	DESCRIPTION	DATE	E.M.N. NO.	DRAFT	CHKD.	APPD.
P	ADDED CE 116-19V	6-21-59	6 DL			
N	ADDED CE 116-18V	4-27-56	21326	G.D.L.		
M	ADDED CE 116-17V	4-23-56	21036	GE	el	el
L	ADDED -13V TO -16V. -12V WAS CC116	2-16-67	17800	RME	el	el
K	ON PICT STYLE EBE DELETED - CC116-12V ADDED ON SPEC. TOL. RANGE ADDED - TEMP. RANGE WAS -25 TO +65	7-2-66	16906	G.D.L.	el	el

**NOTES**

1-MFR'S NUMBER EXPLANATION  
(A) FOR MTG STRAP ADD "S" TO NUMBER SHOWN IN CHART.  
(ie: BR8-250VS)

2-STAMPING  
(A) CAPACITOR WILL BE STAMPED WITH VENDORS NUMBER, CAP. IN uf, W.V., "-" AND "+".  
MAX. TEMP. IN DEG. C.

3- SEE CE 103

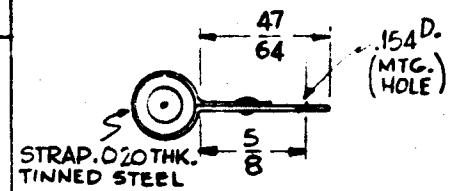
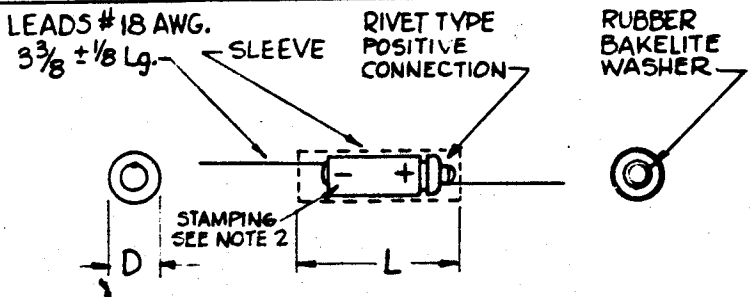
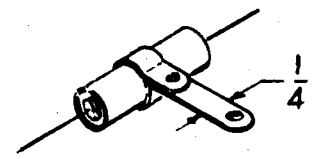
QTY/UNIT	MODEL USED ON	ASSY. NO.
SCALE	CODE	S401-146(BR)

THE CONTENTS OF THIS DRAWING ARE THE EXCLUSIVE PROPERTY OF THE TECHNICAL MATERIEL CORP. ITS UNAUTHORIZED USE OR REPRODUCTION IN WHOLE OR IN PART IS STRICTLY FORBIDDEN.

NOTES

**STANDARD DRAWING**

CE 116



- SPECIFICATIONS:**
1. NEGATIVE TERMINAL GROUNDED.
  2. CASE - ALUMINUM, HERMETICALLY SEALED (WITH BLACK VINYL SLEEVE)
  3. TEMPERATURE RANGE -20°C. TO +85°C.
  4. TOLERANCE : 3 TO 50V -10% +150%  
51 TO 350V -10% +100%  
351 TO 700V -10% +50%

T M C PART NUMBER TO BE IN THE FOLLOWING FORM:

**CE 116 - 1V - S**

BASIC T M C PART NUMBER SEE CHART

S - W/MTG. STRAP  
N - W/O MTG. STRAP

REQ'D.	ITEM	PART NUMBER	DESCRIPTION	SYMBOL
<b>LIST OF MATERIAL</b>				
MATERIAL		THE TECHNICAL MATERIEL CORP. MAMARONECK, NEW YORK		
FINISH		TITLE CAPACITOR, FIXED, ELECTROLYTIC POLARIZED		
UNLESS OTHERWISE SPECIFIED DIMENSIONS ARE IN INCHES AND INCLUDE CHEMICALLY APPLIED OR PLATED FINISHES		DRAWN DATE 7/16/62 CHECKED DATE 7/16/62 ELECT. DES. DATE 7/16/62 MECH. DES.	FINAL APPROVAL CE 116	DATE REV. LTR. P
DECIMALS X $\pm .05$ XX $\pm .01$ XXX $\pm .005$		FRACTIONS $\pm 1/64$ ANGLES $\pm 0^\circ 30'$		SHEET