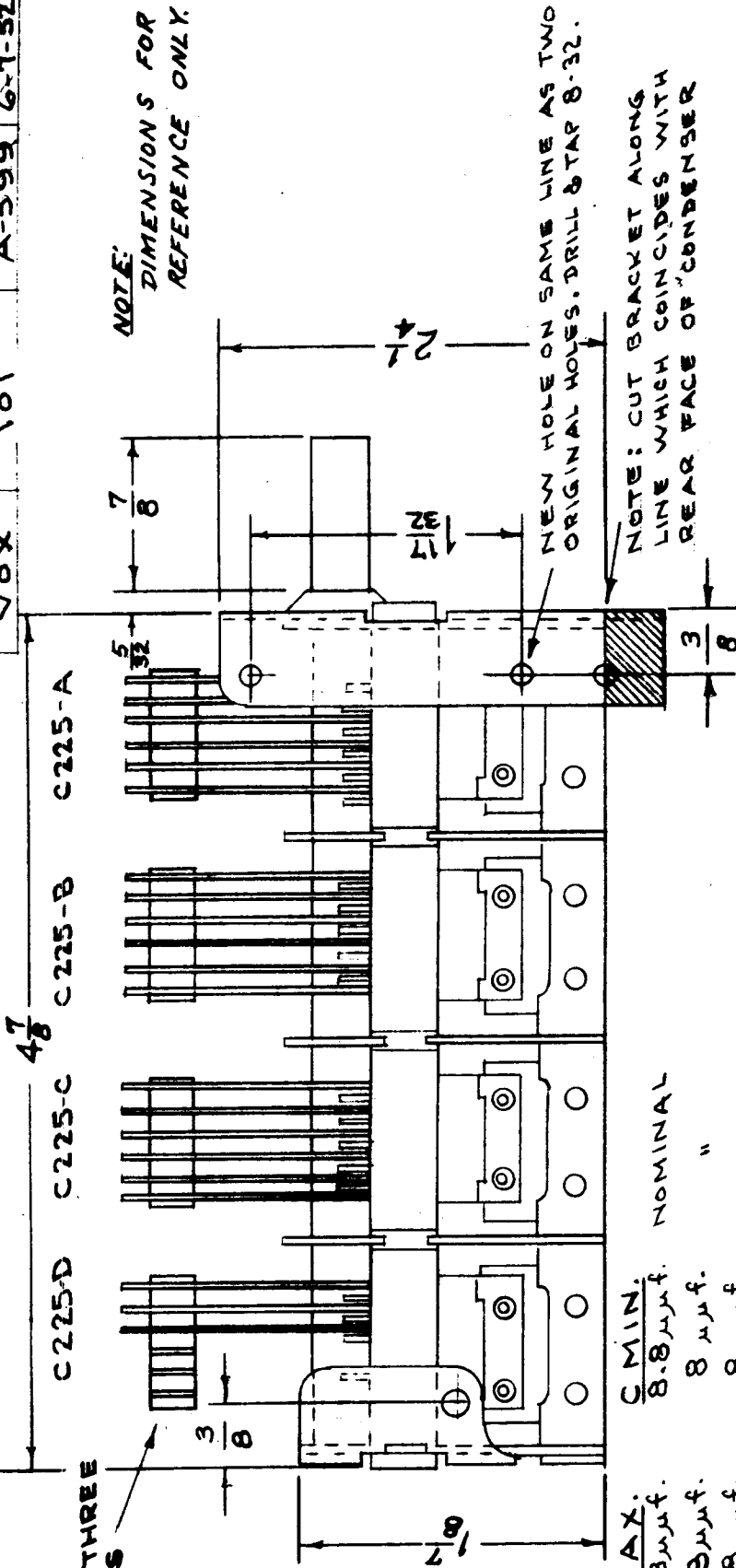


IF IT IS FOUND DESIRABLE TO CHANGE ANY TOLERANCE OR OTHER DETAIL SPECIFIED ON THIS DRAWING NOTIFY THE PURCHASER PROMPTLY.

MAXIMUM ALLOWABLE TOLERANCES HAVE BEEN DETERMINED AND DEVIATIONS WILL BE CAUSE FOR REJECTION. REMOVE ALL BURRS AND SHARP EDGES

REMOVE LAST THREE ROTOR PLATES



- C MAX. C MIN. NOMINAL
- C225-A: 228µf. 8.8µf.
  - C225-B: 208µf. 8µf.
  - C225-C: 208µf. 8µf.
  - C225-D: 106µf. 6µf.

ALL SPLIT PLATES TO BE LEFT FLAT (IN THE UNADJUSTED STATE)

ISSUE	ITEM	CHANGED FROM	DATE	CN. NO.	DRAFTS	CHECKER	ENG. APP.
C	1	DIMENSIONS ADDED	2-28-50	3	PB	JAW	WSE
		REDRAWN, NO CHANGE	2-11-54		C.D.D.	JAW	WSE

TOLERANCES

DEC. DIM. ±  
FRAC. DIM. ±  
ANGULAR DIM. ±

DRILL, PUNCH, COMMERCIAL STOCK SIZES AND MANUFACTURERS TOLERANCES ARE NOT INCLUDED.

CB-100 C

USED ON

PROJECT NO. ASSY. NO. DATE

MODEL

NOX

101

A-599

6-7-52

REQ. ITEM	PART NO.	DESCRIPTION	SYMBOL
#		THE TECHNICAL MATERIEL CORP. MAMARONECK, NEW YORK	
#		CAPACITOR, VARIABLE	
#		AIR TUNING	
#		C.D.D. 2-11-54	WSE
#		ATT	MECH. DES. APP.
#		ATT	WSE
#		FINAL APPROVAL	
#		SUPERCEDES	
#		AEM 078-A	
#		CB-100 C	

REF: RADIO CONDENSER CORP. NO. 8/9090

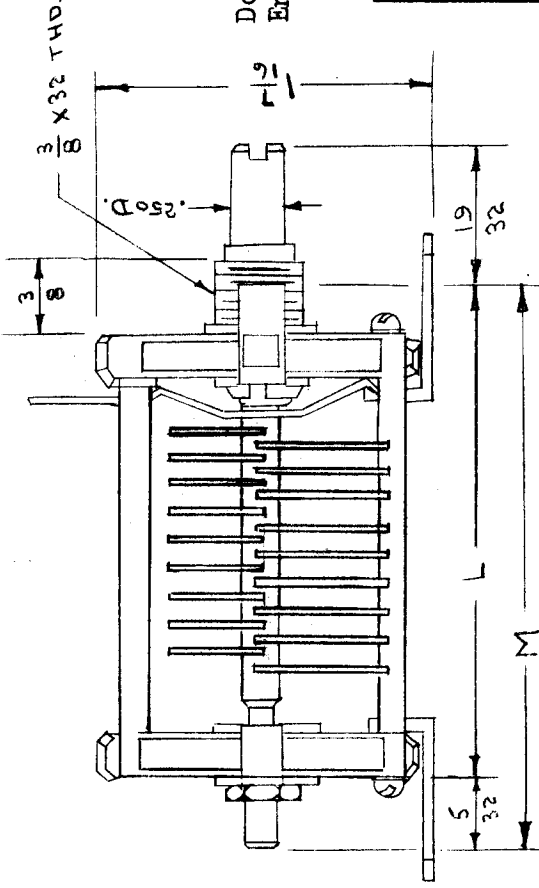
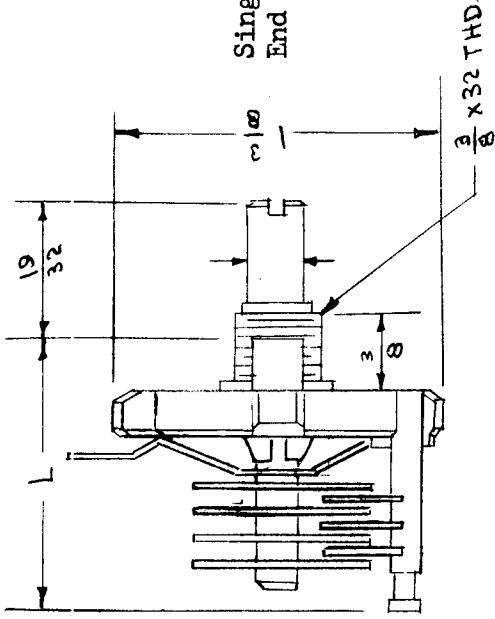
# STANDARD DRAWING

CB-102

C

IF IT IS FOUND DESIRABLE TO CHANGE ANY TOLERANCE OR OTHER DETAIL SPECIFIED ON THIS DRAWING NOTIFY THE PURCHASER PROMPTLY.

MAXIMUM ALLOWABLE TOLERANCES HAVE BEEN DETERMINED AND DEVIATIONS WILL BE CAUSE FOR REJECTION. REMOVE ALL BURRS AND SHARP EDGES



Mounting Dim.  $MM \frac{1}{2}''$  more than  $''L''$  Dimension.  
 End Plates-3/16 Steatite  
 Tie Rods & Shaft-Brass  
 \* Double End Plates  
 + Single End Plates

Dim. For Ref. Only

USED ON

MODEL	PROJECT NO.	ASSY. NO.	DATE
NOT LESS THAN CAP. MAX.	NOT MORE THAN PER-SECT. MIN.	SPACING	NO. PLATES
9	3.4	.030	3
23.5	4.2	.030	7
45	5.4	.030	13
67.5	6.7	.030	19
89	8.5	.030	25
182	13.7	.030	51

TMC NO.	CAT. NO.	PART NO.
+ CB 102-1	10LL5	167-101
+ CB 102-2	25LL5	167-102
+ CB 102-3	50LL5	167-103
+ CB 102-4	75LL5	167-104
* CB 102-5	100LL5	167-151
* CB 102-6	200LL5	167-152

ISSUE ITEM	CHANGED FROM	DATE	CN. NO.	DRAFTS CHECKER	ENG. APP.
C	CHART REV'D. DELE.	2-12-67	17818	RME	[Signature]
B	REF. ADD S 401 NO.	5-22-63	3074	[Signature]	[Signature]
A	COLLUMS 4 & 5 ON CHART CLARIFIED	2/18/65	1	[Signature]	[Signature]
PICTORIALS CLARIFIED					
SCALE 5401-47					
TOLERANCES					
DEC. DIM. ±					
FRAC. DIM. ±					
ANGULAR DIM. ±					
DRILL, PUNCH, COMMERCIAL STOCK SIZES AND MANUFACTURERS TOLERANCES ARE NOT INCLUDED.					

REQ. ITEM	PART NO.	DESCRIPTION	SYMBOL
THE TECHNICAL MATERIEL CORP. MAMARONECK, NEW YORK			
CAPACITOR, VARIABLE			
TUNING			
C.D.D. 12-16-S2			
DRAWN G.T.O.			
ELEC. DES. APP. [Signature]			
MECH. DES. APP. [Signature]			
CHECKED [Signature]			
FINAL APPROVAL			
CB-102			

# STANDARD DRAWING

IF IT IS FOUND DESIRABLE TO CHANGE ANY TOLERANCE OR OTHER DETAIL SPECIFIED ON THIS DRAWING NOTIFY THE PURCHASER PROMPTLY.

MAXIMUM ALLOWABLE TOLERANCES HAVE BEEN DETERMINED AND DEVIATIONS WILL BE CAUSE FOR REJECTION. REMOVE ALL BURRS AND SHARP EDGES

CB-104

USED ON

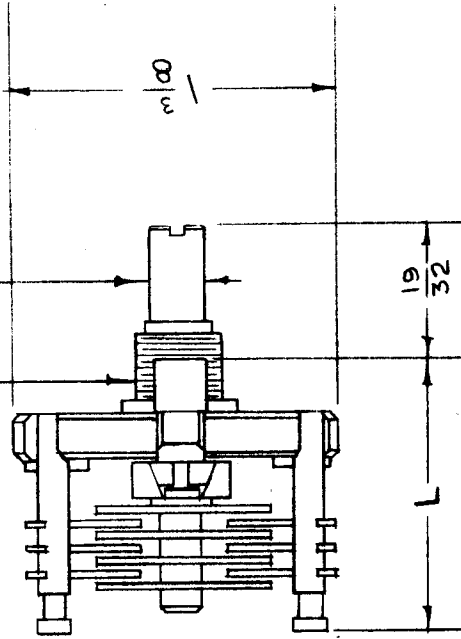
DATE

ASSY. NO.

PROJECT NO.

MODEL

$\frac{3}{8}$  - 32 THD. .250 DIA.



END PLATES - 3/16 STEATITE  
TIE RODS + SHAFT - BRASS

DIMENSIONS FOR REF. ONLY  
REF: E.F. JOHNSON CO.

BUTTERFLY

TMC NO.	CATALOG NO.	PART NO.	CARPER/SECT.		NO. SPACING PLATES	L.
			MAX.	MIN.		
CB-104-1	10LB15	167-201	10.5	2.8	.030"	7 13/64
CB-104-2	25LB15	167-202	26	4.3	.030"	18 7/16
CB-104-3	50LB15	167-203	51	6.5	.030"	34 15/16

REQ. ITEM	PART NO.	DESCRIPTION	SYMBOL
	ff	THE TECHNICAL MATERIEL CORP. MAMARONECK, NEW YORK	
SEE NOTE	ff	CAPACITOR, VARIABLE	
MATERIAL	ff	TUNING	
TYPE & TEMPER	ff		
HEAT TREAT. SPEC.	ff		
FINISH & SPEC. NO.	ff		

ISSUE ITEM	CHANGED FROM	DATE	CN. NO.	DRAFTS	CHECKER	ENG. APP.
Ø		12/10/68				
TOLERANCES						
SCALE						
ORIGINAL RELEASE FOR PRODUCTION						
DRILL, PUNCH, COMMERCIAL STOCK SIZES AND MANUFACTURERS TOLERANCES ARE NOT INCLUDED.						
ALL OTHERS	DEC. DIM. ±	FRAC. DIM. ±	ANGULAR DIM. ±			

CHECKED: *[Signature]*  
DATE: 10-14-52  
DRAWN: *[Signature]*  
ELEC. DES. APP. *[Signature]*  
MECH. DES. APP. *[Signature]*

FINAL APPROVAL: *[Signature]*  
CB-104

IF IT IS FOUND DESIRABLE TO CHANGE ANY TOLERANCE OR OTHER DETAIL SPECIFIED ON THIS DRAWING NOTIFY THE PURCHASER PROMPTLY.

MAXIMUM ALLOWABLE TOLERANCES HAVE BEEN DETERMINED AND DEVIATIONS WILL BE CAUSE FOR REJECTION. REMOVE ALL BURRS AND SHARP EDGES

ORIGINAL RELEASE FOR PRODUCTION CHANGED FROM

DATE 12/10/68

SCALE

TOLERANCES

DEC. DIM.  $\pm$

FRAC. DIM.  $\pm$

ANGULAR DIM.  $\pm$

DRILL, PUNCH, COMMERCIAL STOCK SIZES AND MANUFACTURERS TOLERANCES ARE NOT INCLUDED.

ISSUE ITEM

CN. NO.

DRAFTS CHECKER

ENG. APP.

DEC. DIM.  $\pm$

FRAC. DIM.  $\pm$

ANGULAR DIM.  $\pm$

USED ON

MODEL PROJECT NO. ASS'Y. NO. DATE

*Def: HAMMARLUND Mfg Co Part 11776-1*

REQ. ITEM	PART NO.	DESCRIPTION	SYMBOL
		THE TECHNICAL MATERIEL CORP. MAMARONECK. NEW YORK	
	STOCK SIZE		
	MATERIAL	CAPACITOR, VARIABLE, AIR	
	WEIGHT PER PC.		
	TYPE & TEMPER		
	HEAT TREAT. SPEC.		
	FINISH & SPEC. NO.		
		DRAWN	ELEC. DES. APP. MECH. DES. APP.
		CHECKED	FINAL APPROVAL
			CB-111

IF IT IS FOUND DESIRABLE TO CHANGE ANY TOLERANCE OR OTHER DETAIL SPECIFIED ON THIS DRAWING NOTIFY THE PURCHASER PROMPTLY.

MAXIMUM ALLOWABLE TOLERANCES HAVE BEEN DETERMINED AND DEVIATIONS WILL BE CAUSE FOR REJECTION. REMOVE ALL BURRS AND SHARP EDGES

Ø ORIGINAL RELEASE FOR PRODUCTION

12/10/68

U

CHANGED FROM

DATE

CN. NO.

DRAFTS

CHECKER

ENG. APP.

TOLERANCES

DEC. DIM. ±  
FRAC. DIM. ±  
ANGULAR DIM. ±

DRILL, PUNCH, COMMERCIAL STOCK SIZES AND MANUFACTURERS TOLERANCES ARE NOT INCLUDED.

SCALE

Ø CB-112

USED ON

ASS'Y. NO.

PROJECT NO.

MODEL

DATE

DMK-4

9/4/53

Def: Hammarlund Mtg Co Part 11726-109

REC. ITEM	PART NO.	DESCRIPTION	SYMBOL
		THE TECHNICAL MATERIEL CORP. MAMARONECK, NEW YORK	
	STOCK SIZE		
	MATERIAL	CAPACITOR, VARIABLE, AIR	
	WEIGHT PER PC.		
	TYPE & TEMPER		
	HEAT TREAT. SPEC.		
	FINISH & SPEC. NO.		
		DRAWN	ELEC. DES. APP. MECH. DES. APP.
		CHECKED	FINAL APPROVAL
			Ø CB-112

IF IT IS FOUND DESIRABLE TO CHANGE ANY TOLERANCE OR OTHER DETAIL SPECIFIED ON THIS DRAWING NOTIFY THE PURCHASER PROMPTLY.

MAXIMUM ALLOWABLE TOLERANCES HAVE BEEN DETERMINED AND DEVIATIONS WILL BE CAUSE FOR REJECTION. REMOVE ALL BURRS AND SHARP EDGES

Ø ORIGINAL RELEASE FOR PRODUCTION CHANGED FROM DATE 12/16/68

TOLERANCES SCALE

DEC. DIM. ±  
FRAC. DIM. ±  
ANGULAR DIM. ±

DRILL, PUNCH, COMMERCIAL STOCK SIZES AND MANUFACTURERS TOLERANCES ARE NOT INCLUDED.

USED ON PROJECT NO. ASS'Y. NO. DATE

MODEL DMK-4 9/4/53

Ref: Hammond Btz Co Part 34001-B1

REQ. ITEM	PART NO.	DESCRIPTION	SYMBOL
		THE TECHNICAL MATERIEL CORP. MAMARONECK, NEW YORK	
		CAPACITOR, VARIABLE A112	
		STOCK SIZE	
		MATERIAL	
		WEIGHT PER PC.	
		TYPE & TEMPER	
		DRAWN	ELEC. DES. APP. MECH. DES. APP.
		HEAT TREAT. SPEC.	
		FINISH & SPEC. NO.	
		CHECKED	FINAL APPROVAL

IF IT IS FOUND DESIRABLE TO CHANGE ANY TOLERANCE OR OTHER DETAIL SPECIFIED ON THIS DRAWING NOTIFY THE PURCHASER PROMPTLY.

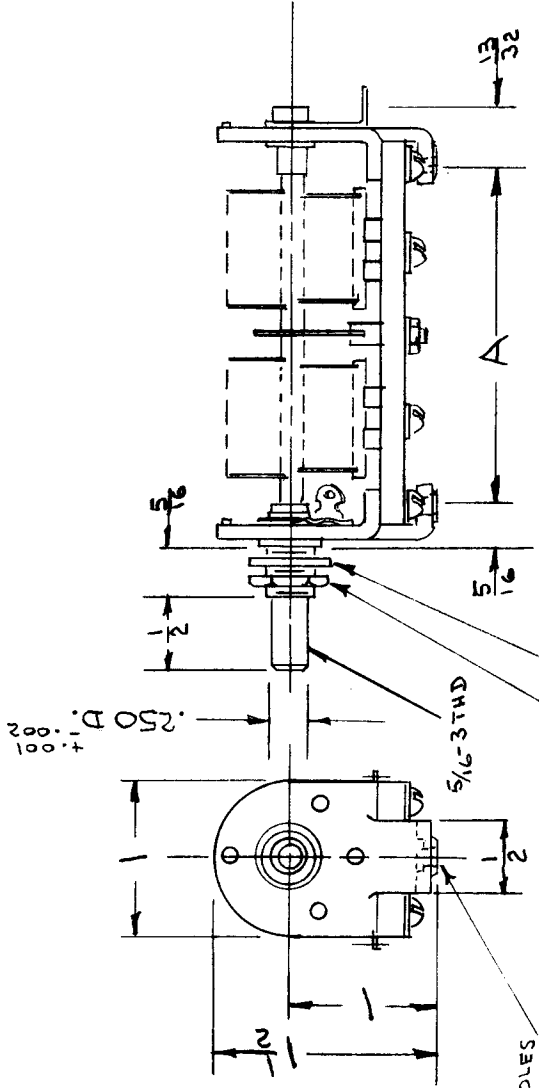
MAXIMUM ALLOWABLE TOLERANCES HAVE BEEN DETERMINED AND DEVIATIONS WILL BE CAUSE FOR REJECTION. REMOVE ALL BURRS AND SHARP EDGES

TMC NO	CODE NO	CAPACITY MAX.	MIN.	PLATES SECTION	MTG. DIM. A
CB-114-1	HFD-140	142.	6.0	37	2 15/16

CB-114

USED ON

MODEL	PROJECT NO.	ASSY. NO.	DATE
RSC	170		9-16-53



REF: HAMMARLUND MFG. CO. HFD-140

REQ. ITEM	PART NO.	DESCRIPTION	SYMBOL
	#	THE TECHNICAL MATERIEL CORP.	
		MAMARONECK. NEW YORK	
		CONDENSER	
		DUAL VARIABLE	
		G.T.O. WDC	
		ELEC. DES. APP.	MECH. DES. APP.
		G.T.O. 1	
		CHECKED	FINAL APPROVAL
			CB-114

STOCK SIZE	#
MATERIAL	#
WEIGHT PER PC.	#
TYPE & TEMPER	#
HEAT TREAT. SPEC.	#
FINISH & SPEC. NO.	#

ISSUE ITEM	CHANGED FROM	DATE	CN. NO.	DRAFTS	CHECKER	ENG. APP.

TOLERANCES

SCALE 1/2"

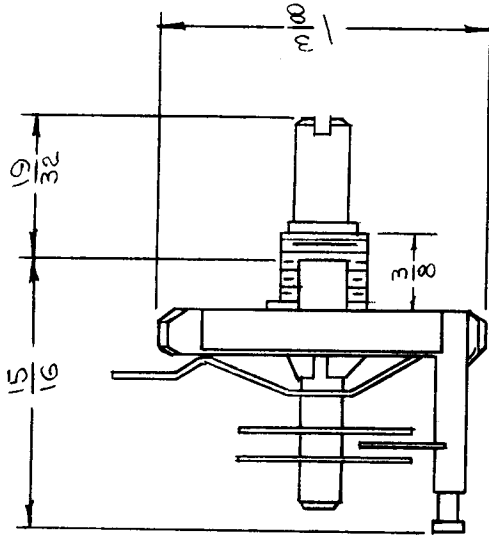
DRILL, PUNCH, COMMERCIAL STOCK SIZES AND MANUFACTURERS TOLERANCES ARE NOT INCLUDED.





IF IT IS FOUND DESIRABLE TO CHANGE ANY TOLERANCE OR OTHER DETAIL SPECIFIED ON THIS DRAWING NOTIFY THE PURCHASER PROMPTLY.

MAXIMUM ALLOWABLE TOLERANCES HAVE BEEN DETERMINED AND DEVIATIONS WILL BE CAUSE FOR REJECTION. REMOVE ALL BURRS AND SHARP EDGES



NOMINAL CAPACITY	
MIN	MAX
2.2 pF	10 pF
GUARANTEED CAPACITY	
MIN	MAX
3.4 pF	9 pF

B	CHG'D JOHNSON TO MFG. P/N ADD CAP. INFO.	2-12-67	17818	RME	<i>[Signature]</i>
A	REF WAS 10L15 SP	10/24/57	—	JR	<i>[Signature]</i>
ISSUE ITEM	CHANGED FROM	DATE	CN. NO.	DRAFTS	CHECKER
SCALE 5401-47					

TOLERANCES  
 DEC. DIM. ±  
 FRAC. DIM. ±  
 OTHERS ANGULAR DIM. ±

DRILL, PUNCH, COMMERCIAL STOCK SIZES AND MANUFACTURERS TOLERANCES ARE NOT INCLUDED.

CB 121 B

REQ. PER UNIT		MODEL		PROJECT NO.		ASSY. NO.		DATE	
1		VOX						5-19-58	
1		RTE						5-23-58	

This Capacitor shall be a conventional

Mfgs P/N 10L15 (TMC CB 102-1) but must meet the following additional Specifications.

- The shaft torque shall not exceed 3" ounces.
- There shall be a minimum of rotor wobble.

The Capacitor shall then be known by the

Mfgs P/N 167-101-7

REQ. ITEM	PART NO.	DESCRIPTION	SYMBOL
		THE TECHNICAL MATERIEL CORP.	
		MAMARONECK. NEW YORK	
		CAPACITOR, VARIABLE	
		TUNING	
		DRAWN <i>[Signature]</i> 2/23/55	
		CHECKED <i>[Signature]</i> 1/23/55	
		ELEC. DES. APP. <i>[Signature]</i>	MECH. DES. APP.
		HEAT TREAT. SPEC.	FINAL APPROVAL
		FINISH & SPEC. NO.	CB 121 B

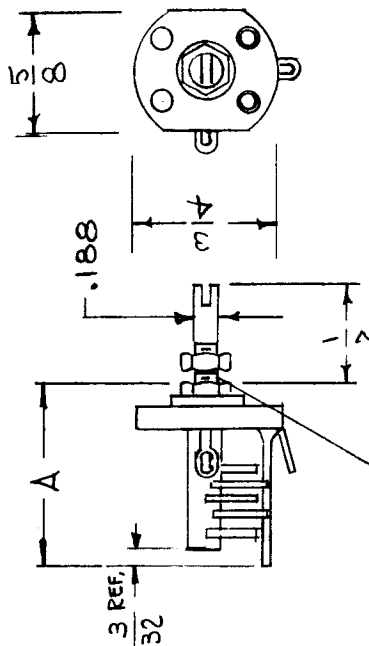
# STANDARD DRAWING

CB-122 B

IF IT IS FOUND DESIRABLE TO CHANGE ANY TOLERANCE OR OTHER DETAIL SPECIFIED ON THIS DRAWING NOTIFY THE PURCHASER PROMPTLY.

MAXIMUM ALLOWABLE TOLERANCES HAVE BEEN DETERMINED AND DEVIATIONS WILL BE CAUSE FOR REJECTION. REMOVE ALL BURRS AND SHARP EDGES

T.M.C. NO.	CAT. NO.	TYPE NO.	NOMINAL MAX	CAP. MIN. MUF	NO. PLATES	"A"
CB-122 -1	160-102	5M11	5.0	1.5	5	45/64
" -2	160-104	9M11	8.7	1.8	9	13/16
" -3	160-107	15M11	14.2	2.3	15	1"
" -A	160-110	20M11	19.6	2.7	21	1-11/64



FLATTED TOP & BOTTOM TO 3/16

REF: E.F. JOHNSON CO. TYPE M11

REQ. ITEM	PART NO.	DESCRIPTION	SYMBOL
		THE TECHNICAL MATERIEL CORP.	
		MAMARONECK, NEW YORK	
		CAPACITOR, TYPE M	
		STOCK SIZE	
		MATERIAL	
		WEIGHT PER PC.	
		TYPE & TEMPER	
		DRAWN	5/16/55
		ELEC. DES. APP.	HHH
		MECH. DES. APP.	WJ
		CHECKED	G.T.O
		FINAL APPROVAL	
		FINISH & SPEC. NO.	CB-122 B

ISSUE ITEM	CHANGED FROM	DATE	CN. NO.	DRAFTS CHECKER	ENG. APP.
B		11-1-62	7585	[Signature]	[Signature]
A	1 IN CB-122-4-143/64 WAS 13/64	4-12-60	2114	[Signature]	[Signature]

SCALE

TOLERANCES

DEC. DIM. ±  
FRAC. DIM. ±  
OTHERS ANGULAR DIM. ±

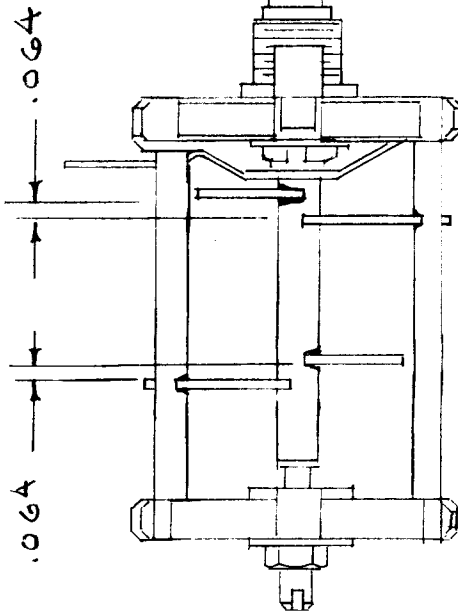
DRILL, PUNCH, COMMERCIAL STOCK SIZES AND MANUFACTURERS TOLERANCES ARE NOT INCLUDED.

CB-123 A

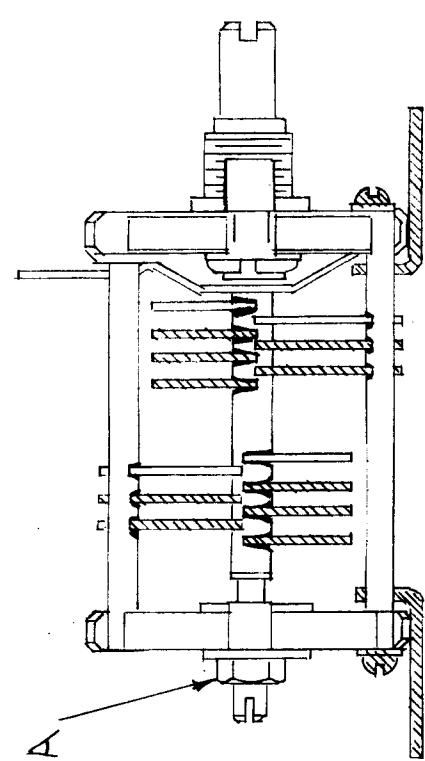
USED ON  
 PROJECT NO.  
 MODEL  
 ASS'Y. NO.  
 DATE

REQ. PER UNIT  
 1  
 FSS  
 Y-26-55

IF IT IS FOUND DESIRABLE TO CHANGE ANY TOLERANCE OR OTHER DETAIL SPECIFIED ON THIS DRAWING NOTIFY THE PURCHASER PROMPTLY.  
 MAXIMUM ALLOWABLE TOLERANCES HAVE BEEN DETERMINED AND DEVIATIONS WILL BE CAUSE FOR REJECTION. REMOVE ALL BURRS AND SHARP EDGES



( SHOWN AFTER MODIFICATION )  
 CB-123



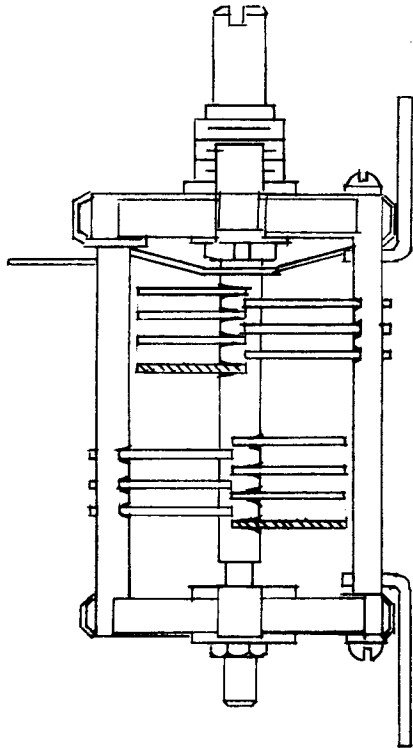
CB-103-1  
 (BEFORE MODIFICATION)  
 MODIFICATION PROCEDURE  
 STEP 1 - REMOVE MTG. BRACKETS. (SHADED).  
 " 2 - REMOVE REAR PLATES (SHADED) FROM BOTH SECTIONS.  
 " 3 - LOOSEN NUT "A". SCREWDRIIVER ADJUST TO .064 BETWEEN ROTOR & STATOR PLATES.  
 " 4 - TIGHTEN NUT "A".

REQ. ITEM	PART NO.	DESCRIPTION	SYMBOL
CB-103-1		THE TECHNICAL MATERIEL CORP. MAMARONECK. NEW YORK	
STOCK SIZE		CAPACITOR, VARIABLE, AIR	
MATERIAL	WEIGHT PER PC.	CA	FSS
TYPE & TEMPER		COD 7-26-55	AB
HEAT TREAT. SPEC.		DRAWN	ELEC. DES. APP. MECH. DES. APP.
FINISH & SPEC. NO.		YADG	KZ ATT.
		CHECKED	FINAL APPROVAL
			CB-123 A

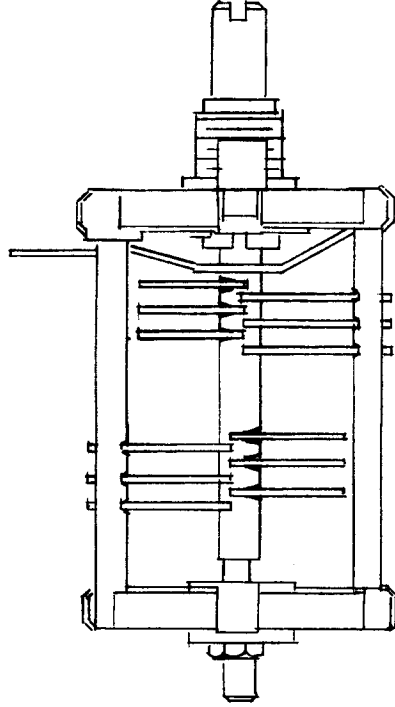
ISSUE ITEM	CHANGED FROM	DATE	CN. NO.	DRAFTS CHECKER	ENG. APP.
A	VALUE ADDED	10-7-55	1	B	KZ ATT
TOLERANCES					
SCALE					
DEC. DIM. ± .005					
FRAC. DIM. ±					
ANGULAR DIM. ±					
DRILL, PUNCH, COMMERCIAL STOCK SIZES AND MANUFACTURERS TOLERANCES ARE NOT INCLUDED.					

IF IT IS FOUND DESIRABLE TO CHANGE ANY TOLERANCE OR OTHER DETAIL SPECIFIED ON THIS DRAWING NOTIFY THE PURCHASER PROMPTLY.

MAXIMUM ALLOWABLE TOLERANCES HAVE BEEN DETERMINED AND DEVIATIONS WILL BE CAUSE FOR REJECTION. REMOVE ALL BURRS AND SHARP EDGES



CB-103-1  
(BEFORE MODIFICATION)  
REMOVE MOUNTING BRACKETS.  
REMOVE REAR ROTOR PLATE  
(SHADED) OF EACH SECTION  
TO MAKE CB-124 SHOWN NT RIGHT.



45-24.5  $\mu$ f  
CB-124  
(AFTER MODIFICATION)

REQ. PER UNIT	MODEL	PROJECT NO.	USED ON
1	FSS		
		ASS'Y. NO.	DATE
			8-3-55

CB-124 A

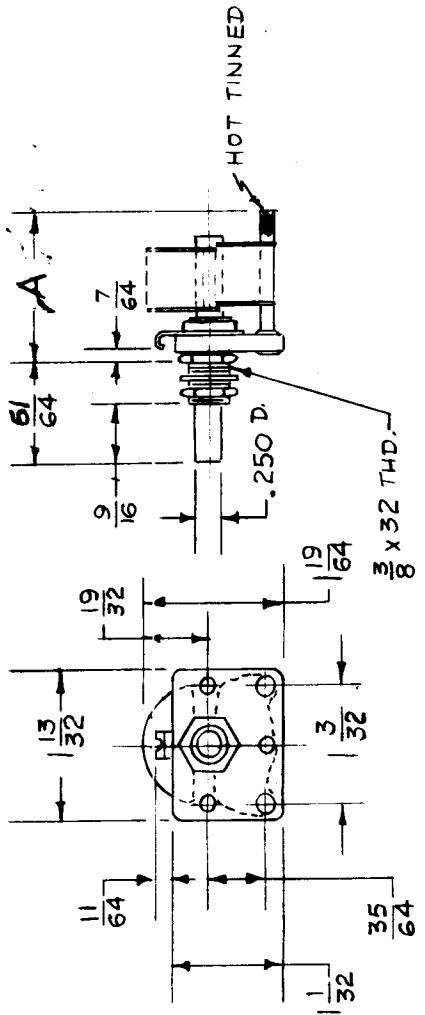
REQ. ITEM	PART NO.	DESCRIPTION	SYMBOL
CB-103-1		THE TECHNICAL MATERIEL CORP.	
STOCK SIZE		MAMARONECK, NEW YORK	
MATERIAL	WEIGHT PER PC.	CAPACITOR, VAR., AIR	
		CB	FSS
TYPE & TEMPER		CDR 8-3-55	KZ
HEAT TREAT. SPEC.		DRAWN	ELEC. DES. APP.
FINISH & SPEC. NO.		CHECKED	MECH. DES. APP.
		SCALE	FINAL APPROVAL
		DATE	
		10/2/55	
		1	
		P3	
		KZ	
		ATT	

ISSUE	ITEM	VALUE ADDED	CHANGED FROM	DATE	CN. NO.	DRAFTS	CHECKER	ENG. APP.
A	1							
TOLERANCES								
DEC. DIM. $\pm$								
FRAC. DIM. $\pm$								
OTHERS								
ANGULAR DIM. $\pm$								
DRILL, PUNCH, COMMERCIAL STOCK SIZES AND MANUFACTURERS TOLERANCES ARE NOT INCLUDED.								

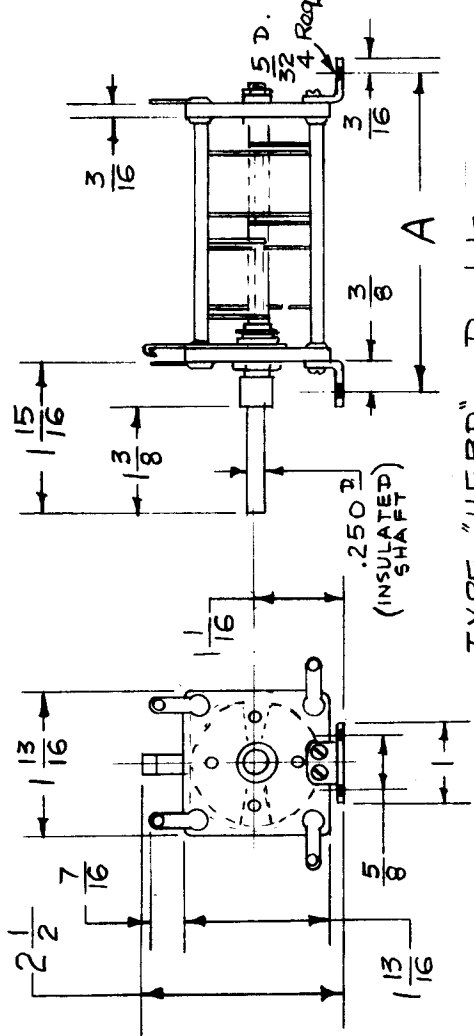


# STANDARD DRAWING

DATE \_\_\_\_\_ CB-135 A



TYPE "HFA" - Single



TYPE "HFBD" - Double

REF - HAMMARLUND

REQ. ITEM	PART NO.	DESCRIPTION	SYMBOL
#	#	THE TECHNICAL MATERIEL CORP. MAMARONECK. NEW YORK	
		CAPACITOR, VARIABLE	
		AIR DIELECTRIC	
		63-15-57	A.J.J.
		DRAWN	CHECKED
		TYPE & TEMPER	HEAT TREAT. SPEC.
		#	#
		FINISH & SPEC. NO.	ELEC. DES. APP. MECH. DES. APP.
			CB-135 A

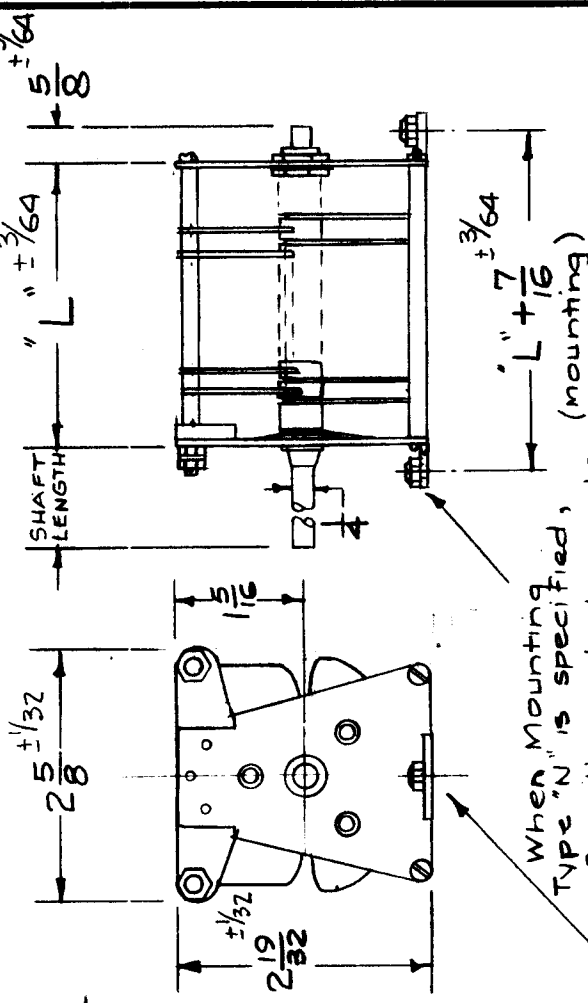
TMC NO.	MFG. NO.	CAPACITY		PLATE SPACING	PLATES PER SECTION	DIMENSION 'A'
		MAX.	MIN.			
CB-135-1	HFA-100-A	102.	4.5	0.020	19	1-13/32
CB-135-2	HFA-140-A	145.	6.0	0.020	27	1-23/32
CB-135-3	HFA-10-B	9.	2.3	0.030	3	25/32
CB-135-4	HFA-15-B	16.	2.8	0.030	5	7/8
CB-135-5	HFA-25-B	25.	3.0	0.030	7	31/32
CB-135-6	HFA-50-B	50.	4.3	0.030	14	1-3/8
CB-135-7	HFA-100-B†	100.	7.5	0.030	27	2-21/64
CB-135-8	HFA-15-E	16.	4.0	0.070	9	1-3/8
CB-135-9	HFBD-50-C	50.	9.0	0.050	11	3-5/8
CB-135-10	HFBD-100-C	105.	14.0	0.050	23	5-3/8
CB-135-11	HFBD-35-E*	37.	9.5	0.070	11	4.
CB-135-12	HFBD-65-E*	63.	12.5	0.070	19	5-9/16
CB-135-13	HFA-15-B MODIFIED	13.8	2.8	0.030	4	7/8

"HFA" - 'A' = 800 V. RMS 'B' = 1200 V. RMS 'E' = 1750 V. RMS  
 "HFBD" - 'C' = 1500 V. RMS 'E\*' = 3000 V. RMS (Round Edge Plates)  
 † - Has Front & Rear Supporting Panels.

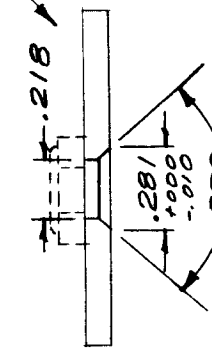
NOTE - HEX. NUT (3/32 x 1/2" Across Flats) & FLAT WASHER (5/16 O.D.) TO BE SUPPLIED BY MFG. (TMC EQUIV. - NTH3732BC16 & FW37LBC)

ISSUE ITEM	CHANGED FROM	DATE	CH. NO.	DRAFTS	CHECKER	ENG. APP.
A 1	CB-135-13 Added	11-15-60	3476	RM.	[Signature]	[Signature]
TOLERANCES						
MAXIMUM ALLOWABLE TOLERANCES HAVE BEEN DETERMINED AND ANY DEVIATIONS WILL BE CAUSE FOR REJECTION. REMOVE ALL BURRS AND SHARP EDGES						
DEC. DIM. ±						
FRAC. DIM. ±						
ANGULAR DIM. ±						

TMC NO.	MFG. NO.	CAP. MAX.	CAP. MIN.	NO. OF PLATES	SPACE IN.	"L"
CB-138-1	250E20	244	12	23	.045	2-25/32
2	350E20	353	15	33	.045	3-17/32
3	500E20	488	19	45	.045	4-13/32
4	100E30	100	11	15	.075	2-9/16
5	150E30	154	14	23	.075	3-7/16
6	250E30	251	20	37	.075	4-15/16
7	350E30	347	25	51	.075	6-7/16
8	35E45	38	9	9	.125	2-5/16
9	50E45	53	11	12	.125	2-31/32
10	70E45	74	13	17	.125	3-9/16
11	100E45	101	16	23	.125	4-17/32
12	150E45	145	20	33	.125	6-3/32
CB-138-13	250E45	241	32	55	.125	9-9/16



CODE	SHAFT LENGTH
A	3/4 (RFA-1)
B	1-1/2 (STD.)



Drilling Plan Required when Mounting Type "N" is Specified.

Type Designation to be as follows:

CB-138-3 A N

TMC DWG NO.

REQ. SHAFT LENGTH CODE (see Chart)

MTG. TYPE N = with Nuts as shown H = with Clearance Holes.

Ref: Johnson Condenser

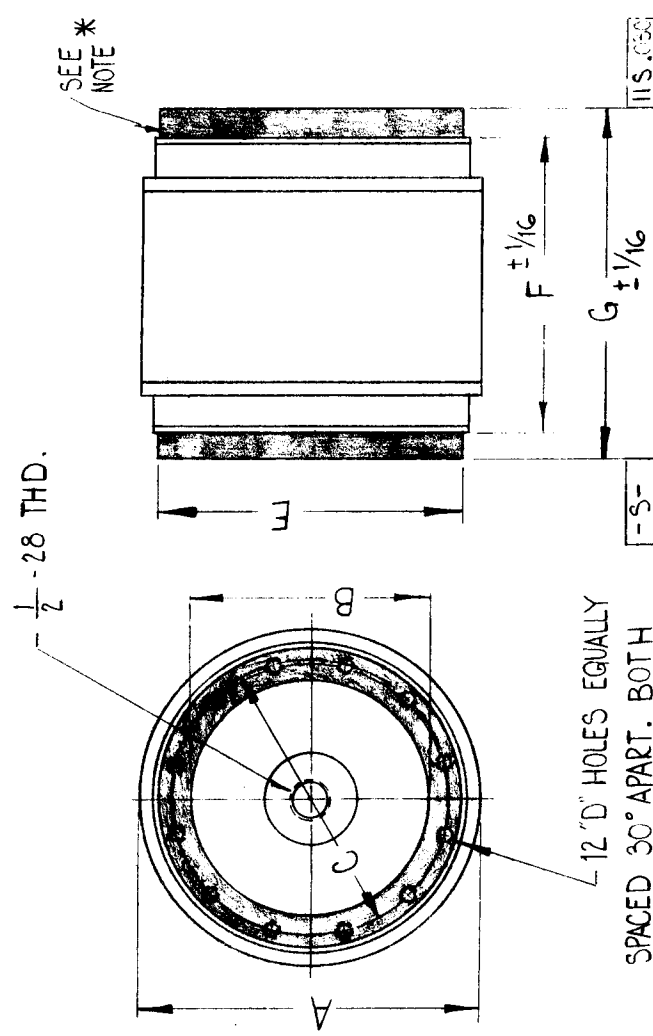
REQ. ITEM	PART NO.	DESCRIPTION	SYMBOL
.032 THK Plates.		THE TECHNICAL MATERIEL CORP. MAMARONECK, NEW YORK	
		STOCK SIZE	
		MATERIAL	
		AIR	
	6/17/58	ASE	ATT
		CHECKED	
		DRAWN	
		ELEC. DES. APP.	
		MECH. DES. APP.	
		FINISH & SPEC. NO.	
		TYPE & TEMPER HEAT TREAT. SPEC.	
		FINAL APPROVAL	
			CB-138 B

ISSUE ITEM	CHANGED FROM	DATE	CH. NO.	DRAFTS	CHECKER	ENG. APP.
B 1	Added Tolerances	2-14-61	4153		DMJ	gfm
A 1	Made into Family (shaft lengths & nuts)	6/9/58	1	16	JLO	gfm

SCALE:      MAXIMUM ALLOWABLE TOLERANCES HAVE BEEN DETERMINED AND ANY DEVIATIONS WILL BE CAUSE FOR REJECTION. REMOVE ALL BURRS AND SHARP EDGES

REQ. PER UNIT	MODEL	USED ON	SYMBOL
GPT-200K	AX 395	ASBY. NO.	CB 167
		DATE	B
		10-18-63	

TMC PART NO.	MFG PART NO.	CAP RANGE	VOLTAGE RATING PEAK KV	CUR RATING	DIMENSIONS TYP. BOTH ENDS			DIM	DIM	DIM	
					A	B	C	D	E	F	G
CB 167-1	CVFB 750	25-750	40	125	7.20	5.156	5.656	1/4-20 X 25/64 DP.	6.156	7 1/16	8 3/16
CB 167-2	CVFB 1500	100-1500	40	135	7.20	5.156	5.656	1/4-20 X 25/64 DP.	6.156	8 13/32	9 17/32



CB 167-1

TMC PART NO.  
(SEE CHART)

NOTE \*  
SHADED AREAS INDICATE CONTACT SURFACES.

B	MAX ADDED ON "A" DIM. CB167-1 & CB167-2 7.20 WAS 7	1-19-66	15544	MS	QC3	QA	F. BUDETTI	DESCRIPTION	SYMBOL
A	CB-167-2 CAP RANGE WAS 35-1500	11.11.64	12883	MS	QC3	QA		THE TECHNICAL MATERIEL CORP. MAMARONECK. NEW YORK	
O	ORIGINAL RELEASE	5.18.64		MS				CAPACITOR, VARIABLE, VACUUM CERAMIC CASE	
X2	REDRAWN & REVISED. WAS 2 SIZE DWG.	10-18-63							
SYM	DESCRIPTION	DATE	CH. NO.	DRAFTS	CHECKER	ENG. APP.	MATERIAL		
	UNLESS OTHERWISE SPECIFIED DIMENSIONS ARE IN INCHES AND INCLUDE CHEMICALLY APPLIED OR PLATED FINISHES								
	TOLERANCES	CODE							
	FRACTIONS	5401-48 (CVF)							
	DECIMALS								
	.X ± .05								
	.XX ± .01								
	.XXX ± .005								
	ANGLES								
	± 0° 30'								
	TYPE & TEMPER	HEAT TREAT. SPEC.							
	W.A. FRANCO	QA							
	DRAWN	CHECKED							
	MS	MS							
	ELEC. DES. APP.	MECH. DES. APP.							
	CB 167	B							



APPLICATION			REVISIONS						
QTY	MODEL USED ON	ASS'Y NO.	LTR	DESCRIPTION	DATE	E.M.N.NO	DRAFT	CHKD	APPD
	LPA-2		X	EXPERIMENTAL RELEASE	2/12/68		C.V.		
			B	ORIG. RELEASE FOR PRODUCTION	2-19-68	Ø	RG		
			A	ADD CB175-2	4/11/73	21053	GE		
			B	MFGR P/NO 154-10-51 WAS 154-10-7A & FOR CB175-2 WAS 154-10-4	5-25-76	21386	GDL		
			C	CB175-3 & 154-B ADD	8-6-79	21580	G.D.L		
CB175-3				CB175			CB175-2		

5401-47 154-8	MFGR (TMC CODE NO.) MFGR PART NO.	5401-47 154-10-51	5401-47 154-10-4
------------------	--------------------------------------	----------------------	---------------------

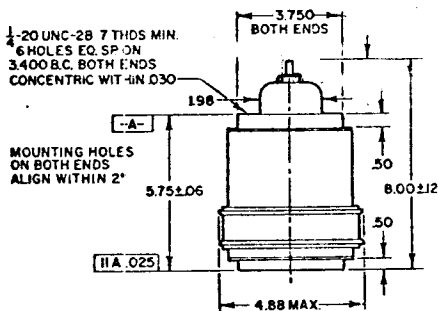
SPECS. ELECTRICAL: MECHANICAL:	23 TO 325 pF AT 3000V SUPPLIED WITH PRECISION BALL BEARINGS	300pF MAX, 3300V SUPPLIED WITH BALL BEARINGS. PLATES TO BE POLISHED. AIR GAP TO BE .081
--------------------------------------	---	--

**PURCHASING NOTE:** VENDOR MUST INCLUDE THE FOLLOWING INFORMATION WHEN SHIPPING THIS ITEM TO TMC.

1. AN OUTLINE DRAWING OR ILLUSTRATION FROM CATALOG SHOWING ALL PERTINENT DIMENSIONS AND TOLERANCES.
2. ELECTRICAL AND/OR MECHANICAL SPECIFICATIONS AS SHOWN IN THEIR CATALOGS.

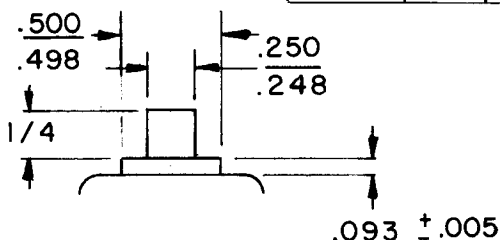
UNLESS OTHERWISE SPECIFIED DIMENSIONS ARE IN INCHES AND INCLUDE CHEMICALLY APPLIED OR PLATED FINISHES		REQ'D	ITEM	PART NUMBER	DESCRIPTION	SYM.	
DECIMALS .X ± .05 .XX ± .01 .XXX ± .005		F. BUDETTI		LIST OF MATERIAL			
FRACTIONS TOLS. 1/64 ANGLES 0° 30'		FINAL APPROVAL <i>[Signature]</i>		DATE 2/19/68	THE TECHNICAL MATERIEL CORP. MAMARONECK, NEW YORK		
MATERIAL	MECH. DES.	DATE		CAPACITOR AIR, VARIABLE			
FINISH	ELECT. DES.	DATE					
	CHECKED	DATE 2-19-68					
	DRAWN	DATE 2-16-68					
NOTICE TO PERSONS RECEIVING THIS DRAWING THE TECHNICAL MATERIEL CORPORATION claims proprietary right in the material disclosed hereon. This drawing is issued in confidence for engineering information only and may not be reproduced or used to manufacture anything shown hereon without permission from THE TECHNICAL MATERIEL CORPORATION to the user. This drawing is loaned for mutual assistance and is subject to recall at any time.				SIZE A	CODE IDENT. NO. 82679	DWG NO. CB 175	ISSUE C
				SCALE	SHEET OF		

APPLICATION			REVISIONS						
QTY	MODEL USED ON	ASS'Y NO.	LTR	DESCRIPTION	DATE	E.M.N.NO	DRAFT	CHKD	APP'D
1	PALA 10K	AX5084	X	EXPERIMENTAL RELEASE	1/15/70	—	KD		
			Ø	ORIGINAL RELEASE	1/20/70		Q		
			A	CHG SHAFT DETAIL	9/8/72	20814	GE	<i>DM</i>	<i>DM</i>



Mounting: Both ends have tapped holes.

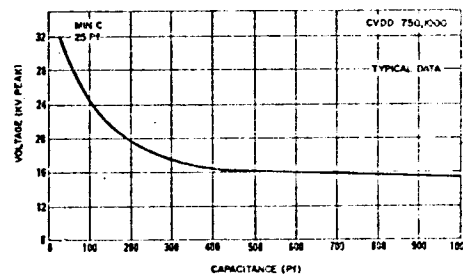
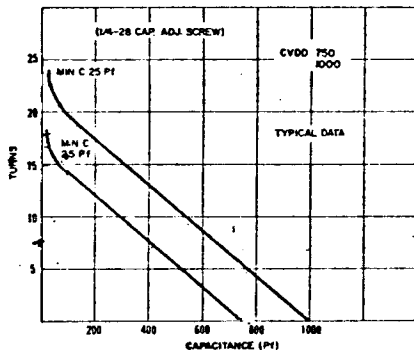
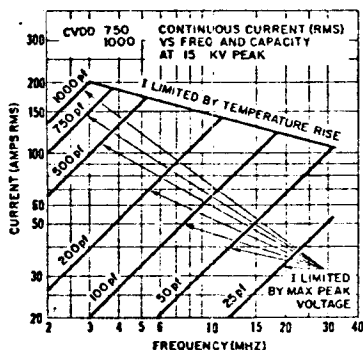
Capacity Range (pf)	Peak Test Voltage	Torque (In. lbs.)	Direct Pull (lbs.)	Weight (nom)
25-750	10 kv	4.2 max	68 max	6 lb 13 oz



CONTINUOUS RMS AMPERES VS FREQUENCY VS CAPACITY

CAPACITY VS TURNS

60 CYCLE PEAK TEST VOLTAGE VS CAPACITY

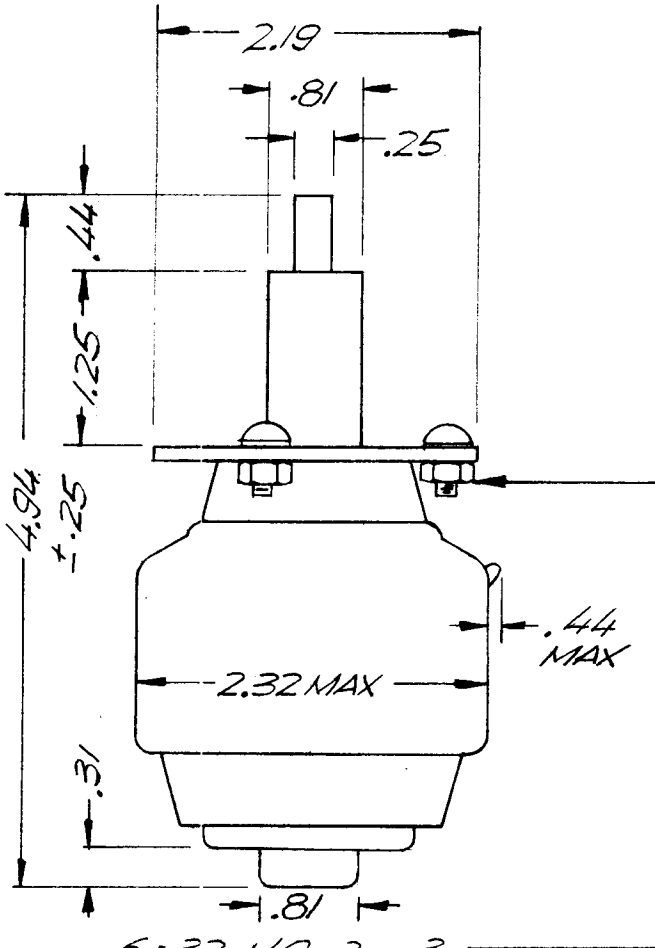


UNLESS OTHERWISE SPECIFIED DIMENSIONS ARE IN INCHES AND INCLUDE CHEMICALLY APPLIED OR PLATED FINISHES		REQ'D ITEM	PART NUMBER	DESCRIPTION	SYM.
DECIMALS: .X ± .05, .XX ± .01, .XXX ± .005 FRACTIONS: 1/64, ANGLES: 0°-30° TOLS.:		BUDETTI		LIST OF MATERIAL	
MATERIAL		FINAL APPROVAL <i>DB</i>	DATE 1-15-70	THE TECHNICAL MATERIEL CORP. MAMARONECK, NEW YORK	
FINISH		MECH. DES.	DATE	CAPACITOR, VARIABLE, CERAMIC	
S401-48 (CVDD 750-100)		ELECT. DES. <i>R. Holter</i>	DATE		
		CHECKED	DATE		
		DRAWN Deierlein	DATE 1-15-70		

NOTICE TO PERSONS RECEIVING THIS DRAWING  
 THE TECHNICAL MATERIEL CORPORATION claims proprietary right in the material disclosed herein. This drawing is issued in confidence for engineering information only and may not be reproduced or used to manufacture anything similar without permission from THE TECHNICAL MATERIEL CORPORATION, to the user. This drawing is loaned for mutual assistance and is subject to recall at any time.

SIZE	CODE IDENT. NO.	DWG NO.	SHEET
A	82679	CB176	A
SCALE <i>H</i>			

APPLICATION			REVISIONS						
QTY	MODEL USED ON	ASS'Y NO.	LTR	DESCRIPTION	DATE	E.M.N.NO	DRAFT	CHKD	APPD
1	TLAM 1K	AS 147	X	EXP RELEASE	8/31/70		GE		
			Ø	ORIGINAL RELEASE	9/3/71		Q		B.E.A.



CATALOG NO.	CAPACITY RANGE (pf)	PEAK TEST VOLTAGE	TORQUE (IN LBS)	DIRECT PULL (LBS)	WEIGHT (NOM)
UCSL 500 3S	5- 500	3 kv	3.8MAX	40MAX	9 OZ.

6-32 NC-2 3  
SCREWS, NUTS  
& LOCKWASHERS  
EQ. SP. ON 1.750 BC

S401-48 (UCSL-500-3S)

UNLESS OTHERWISE SPECIFIED DIMENSIONS ARE IN INCHES AND INCLUDE CHEMICALLY APPLIED OR PLATED FINISHES		REQ'D	ITEM	PART NUMBER	DESCRIPTION	SYM.
DECIMALS: .X ± .05, .XX ± .01, .XXX ± .005 FRACTIONS: 1/64 TOLS.: ANGLES 0°-30'		<b>BUDETTI</b> LIST OF MATERIAL				
MATERIAL		FINAL APPROVAL	<i>JM</i>	DATE	<b>THE TECHNICAL MATERIEL CORP.</b> MAMARONECK, NEW YORK	
FINISH		MECH. DES.	<i>JM</i>	DATE	CAPACITOR, VARIABLE, VACUUM	
		ELECT. DES.	<i>JM</i>	DATE		
		CHECKED		DATE		
		DRAWN	GE	DATE		
<b>NOTICE TO PERSONS RECEIVING THIS DRAWING</b> THE TECHNICAL MATERIEL CORPORATION claims proprietary right in the material disclosed hereon. This drawing is issued in confidence for engineering information only and may not be reproduced or used to manufacture anything shown hereon without permission from THE TECHNICAL MATERIEL CORPORATION to the user. This drawing is loaned for mutual assistance and is subject to recall at any time.		SIZE	CODE IDENT. NO.	DWG NO.	ISSUE	
		A	82679	CB 177	Ø	
SCALE			SHEET			OF

APPLICATION			REVISIONS						
QTY	MODEL USED ON	ASS'Y NO.	LTR	DESCRIPTION	DATE	E.M.N.NO	DRAFT	CHKD	APPD
1	TLAAIK	AX5132	Ø	ORIGINAL RELEASE	4/4/73		g		gag
			A	MARF. CO. WAS USL-500-55	10.3.85		gbl		

8-32 NC-2  
3 SCREWS  
LOCKWASHERS  
& NUTS EQ. SP.  
ON 2.060 BC

CATALOG NO.	CAPACITY RANGE (pf)	PEAK TEST VOLTAGE	TORQUE (IN LBS)	DIRECT PULL LBS.	WEIGHT (NOM)
CSVI-500-0005	5-500	5kv	4.0MAX	50 MAX	1-lb 4 oz

5401-48 (CSVI-500-0005)

UNLESS OTHERWISE SPECIFIED DIMENSIONS ARE IN INCHES AND INCLUDE CHEMICALLY APPLIED OR PLATED FINISHES	REQ'D	ITEM	PART NUMBER	DESCRIPTION	SYM.		
DECIMALS .X ± .05 .XX ± .01 .XXX ± .005 FRACTIONS 1/64 ANGLES 0°-30°		F.B.		LIST OF MATERIAL			
	FINAL APPROVAL	<i>[Signature]</i>	DATE	<b>THE TECHNICAL MATERIEL CORP.</b> MAMARONECK, NEW YORK  <i>CAP. VARIABLE VAC.</i>			
	MECH. DES.	<i>[Signature]</i>	DATE				
	ELECT. DES.	<i>[Signature]</i>	DATE				
	CHECKED		DATE				
DRAWN	GE	DATE					
				SIZE	CODE IDENT. NO.	DWG NO.	ISSUE
				A	82679	CB 178	A
				SCALE		SHEET	OF