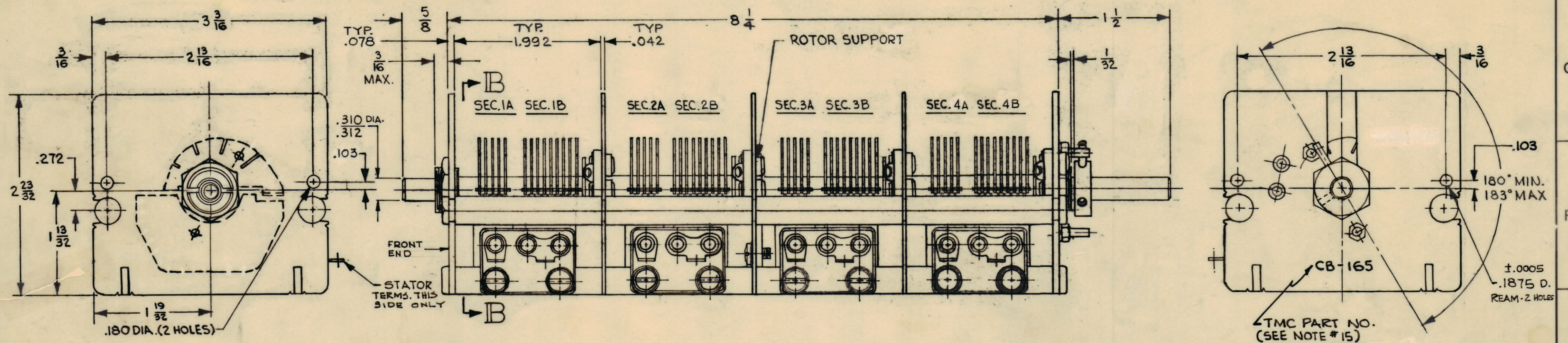


REVISIONS							
ZONE	SYM	DESCRIPTION	DATE	E.M.N. NO.	DRAFT	CHKD	APPD
A		ON NOTE 15, DELETED "METAL"	6/24/63	16458	HLA	JCB	JC



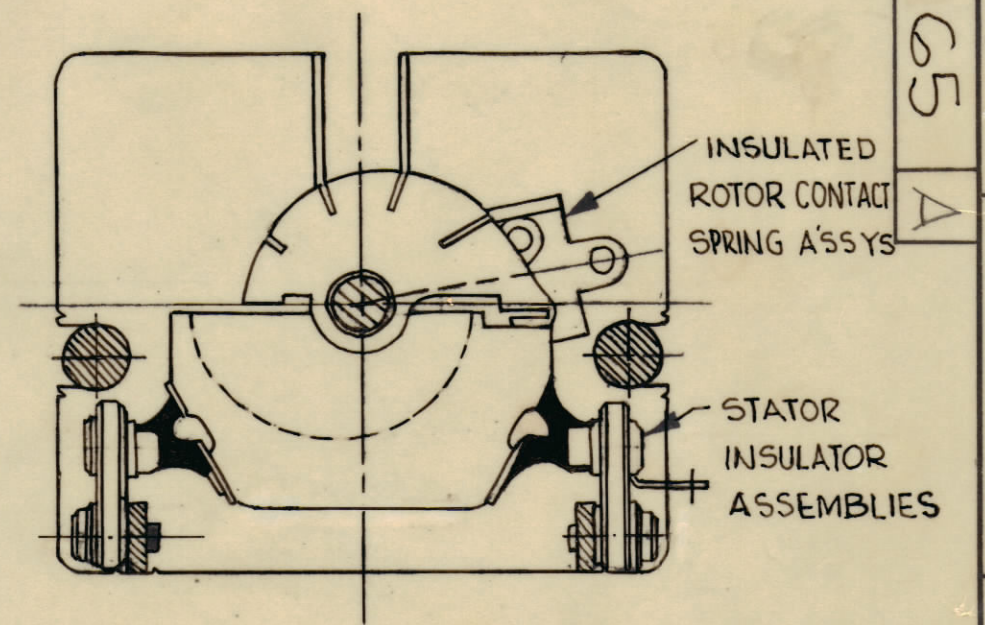
NOTES:

1. FRAME ASSEMBLY: C.R. STEEL, STAKED & SOLDERED - CADMIUM PLATED.
2. ROTOR ASSEMBLY: ROTOR SHAFT - ALUMINA PER JAN-I-10 GR.L-4, D.C. #200 TREATED - BRASS SLEEVES STAINLESS STEEL EXTENSIONS. ROTOR PLATES - H.H. BRASS SOLDERED - LIGHT ACID DIP.
3. BEARINGS: FRONT & REAR - FULL BALL RACE WITH STAINLESS STEEL BALLS.
4. ROTOR CONTACTS: SILVER CONTACTS ON BERYLLIUM SPRINGS (SEE NOTE 16) AGAINST COIN SILVER CONTACT DISCS.
5. STATOR ASSEMBLIES: STATOR STRAPS - C.R. STEEL - COPPER PLATED STATOR PLATES - H.H. BRASS. STAKED & SOLDERED - LIGHT ACID DIP
6. CAPACITY CHARACTERISTIC: SLF FOR 1.417,6 F.R. BETWEEN 5% & 95% ROT.
7. CAPACITY CURVE: SEE CALIBRATION CHART.
8. CAPACITY: SEE CALIBRATION CHART.
9. AIR GAP: .0235 NOMINAL.
10. TORQUE: 3.-6. IN. OZ.
11. VOLTAGE TEST /SECTION: 700V. RMS, 60 CYCLES.
12. ROTATION: INCREASE CAPACITY WITH CCW ROTATION AS VIEWED FROM FRONT END.
13. STATOR INSULATION: STEATITE PER JAN-I-10 GR.L-4. D.C. #200 TREATED.
14. STOPS: AS SHOWN.
15. STAMPING: STAMP TMC PART NO. 1/8 HIGH GOTHIC ON REAR PANEL APPROX. AS SHOWN
16. CONTACT PRESSURE: 30. GRAMS MIN. AT POINT OF CONTACT.

CALIBRATION CHART

CCW ROTATION IN % ★	EFFECTIVE CAP. IN M.M.F. ★★		MATCHING TOL. IN M.M.F. ★★	
	SECTION 1A	SECTION 1B	SECS. 2A, 3A & 4A	SECS 2B, 3B & 4B
5	0.0 -	0.0 -	TRIM	TRIM
25	7.2 ± .6	14.4 ± .65	± .55	± .6
50	18.6 ± .7	37.2 ± .9	± .6	± .7
75	33.8 ± .85	67.6 ± 1.2	± .7	± .85
95	50.0 ± 1.0	100.0 ± 1.5	± .75	± 1.0
MIN AT 5**	11.0 OR LESS	16.5 OR LESS	11.0 OR LESS	16.5 OR LESS

★ SET DIAL AT 100% WITH ROTOR PLATES OF SECTION 1B IN FULL MESH POSITION - TOP EDGES IN ALIGNMENT, WITH TOP EDGES OF STATOR PLATES.
 ★★ ALL CAPACITY MEASUREMENTS TO BE MADE WITH ROTOR GROUNDED TO ADJACENT FRAME PANEL.



CB 165 A

REQ'D.	ITEM	PART NUMBER	DESCRIPTION	SYMBOL
ANGER LIST OF MATERIAL				
MATERIAL			THE TECHNICAL MATERIEL CORP. MAMARONECK, NEW YORK	
FINISH			TITLE CAPACITOR, VARIABLE, AIR R.F. TUNING	
SCALE			DRAWN <i>A. Raulo</i> DATE 11/2/63	
NONE			CHECKED <i>AD</i> DATE 11/22/63	
C			ELECT. DES. <i>J. Anger</i> DATE 1/30/64	
S401-12 (41752-3)			MECH. DES. <i>Jc</i> DATE 11/26/63	
THE CONTENTS OF THIS DRAWING ARE THE EXCLUSIVE PROPERTY OF THE TECHNICAL MATERIEL CORP. ITS UNAUTHORIZED USE OR REPRODUCTION IN WHOLE OR IN PART IS STRICTLY FORBIDDEN.			UNLESS OTHERWISE SPECIFIED DIMENSIONS ARE IN INCHES AND INCLUDE CHEMICALLY APPLIED OR PLATED FINISHES	
DECIMALS .X ± .05 .XX ± .01 .XXX ± .005		FRACTIONS ± 1/64 ANGLES ± 0° 30'		TOLERANCES
REV. LTR.			SHEET	

NOTES