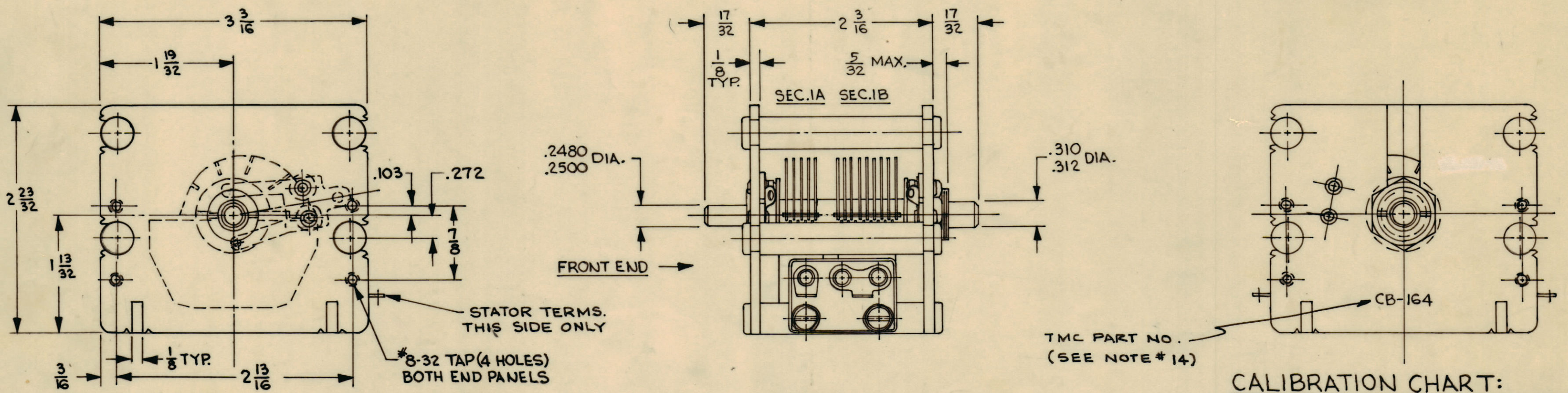


REVISIONS							
ZONE	SYM	DESCRIPTION	DATE	E.M.N. NO.	DRAFT	CHKD	APPD
A		ON NOTE 14, DELETED "METAL"	11-29-66	17342	RME	QA	QA



NOTES:

1. FRAME ASSEMBLY: C.R. STEEL, STAKED & SOLDERED - CADMIUM PLATED.
2. ROTOR ASSEMBLY: ROTOR SHAFT - C.D. STEEL } SOLDERED - CADMIUM PLATED.
 ROTOR PLATES - H.H. BRASS }
3. BEARINGS: FRONT - N.D. 77M1632D
 REAR - ADJ. FULL BALL RACE WITH S.S. BALLS.
4. ROTOR CONTACTS: SILVER CONTACTS ON BERYLLIUM SPRING AGAINST } CONTACT PRESSURE AT POINTS OF
 COIN SILVER CONTACT DISCS. (GROUNDED TO FRAME) } CONTACT NOT LESS THAN 30 GRAMS
5. STATOR ASSEMBLIES: STATOR STRAPS - C.R. STEEL } STAKED & SOLDERED - CADMIUM PLATED.
 STATOR PLATES - H.H. BRASS }
6. CAPACITY CHARACTERISTIC: SLF FOR 1.417,6 F.R. BETWEEN 5% & 95% ROTATION.
7. CAPACITY: SEE CALIBRATION CHART.
8. CAPACITY CURVE: SEE CALIBRATION CHART.
9. AIR GAP: .0235 NOMINAL.
10. TORQUE: 3.5 INCH OUNCES MAX.
11. VOLTAGE TEST/ SECTION: 700 V. RMS, 60 CYCLES.
12. ROTATION: INCREASE CAPACITY WITH CCW ROTATION AS VIEWED FROM FRONT END.
13. STATOR INSULATION: STEATITE PER JAN-1-10, GR. L-4, D.C. #200 TREATED.
14. STAMPING: STAMP TMC PART NUMBER $\frac{1}{8}$ HIGH GOTHIC ON REAR PANEL APPROX. AS SHOWN.

CALIBRATION CHART:

CCW ROTATION		EFFECTIVE CAPACITY IN M.M.F.	
%★ DEGREES		SEC. IA	SEC. IB
5	9	0.0 -	0.0 -
10	18	1.66 ±.15	3.32 ±.15
20	36	5.25 ±.15	10.50 ±.2
25	45	7.18 ±.15	14.36 ±.25
30	54	9.22 ±.15	18.44 ±.25
40	72	13.66 ±.2	27.32 ±.3
50	90	18.59 ±.2	37.18 ±.35
60	118	24.13 ±.25	48.26 ±.4
70	126	30.39 ±.25	60.78 ±.45
75	135	33.81 ±.3	67.62 ±.5
80	144	37.47 ±.3	74.94 ±.55
90	162	45.54 ±.35	91.08 ±.65
95	171	50.00 ±.4	100.00 ±.75
MIN. AT 5(9°)		12.0 OR LESS	17.5 OR LESS

★ SET DIAL AT 100% WITH ROTOR PLATES OF SECTION IB IN FULL MESH POSITION - TOP EDGES IN ALIGNMENT WITH TOP EDGES OF STATOR PLATES.

CB-164 A

REQ'D.	ITEM	PART NUMBER	DESCRIPTION	SYMBOL
ANGER. LIST OF MATERIAL				
MATERIAL			THE TECHNICAL MATERIEL CORP. MAMARONECK, NEW YORK	
FINISH			TITLE CAPACITOR, VARIABLE, AIR OSC TUNING	
DRAWN <i>L. Davis</i>		DATE 11/3/63	FINAL APPROVAL	
CHECKED <i>W. J. ...</i>		DATE 11/22/63	DATE	
ELECT. DES. <i>L. Davis</i>		DATE 1/30/64	DATE	
MECH. DES. <i>R. ...</i>		DATE 1/26/63	DATE	
UNLESS OTHERWISE SPECIFIED DIMENSIONS ARE IN INCHES AND INCLUDE CHEMICALLY APPLIED OR PLATED FINISHES			SHEET	
DECIMALS .X ± .05 .XX ± .01 .XXX ± .005			TOLERANCES ± 1/64 ANGLES ± 0° 30'	
THE CONTENTS OF THIS DRAWING ARE THE EXCLUSIVE PROPERTY OF THE TECHNICAL MATERIEL CORP. ITS UNAUTHORIZED USE OR REPRODUCTION IN WHOLE OR IN PART IS STRICTLY FORBIDDEN.				

Q'TY./UNIT	MODEL USED ON	ASS'Y. NO.
1	HFR-1A	
1	HFR-2	
1	SBG-3	
SCALE	CODE	5401-12(41752-4)
NONE	C	

NOTES