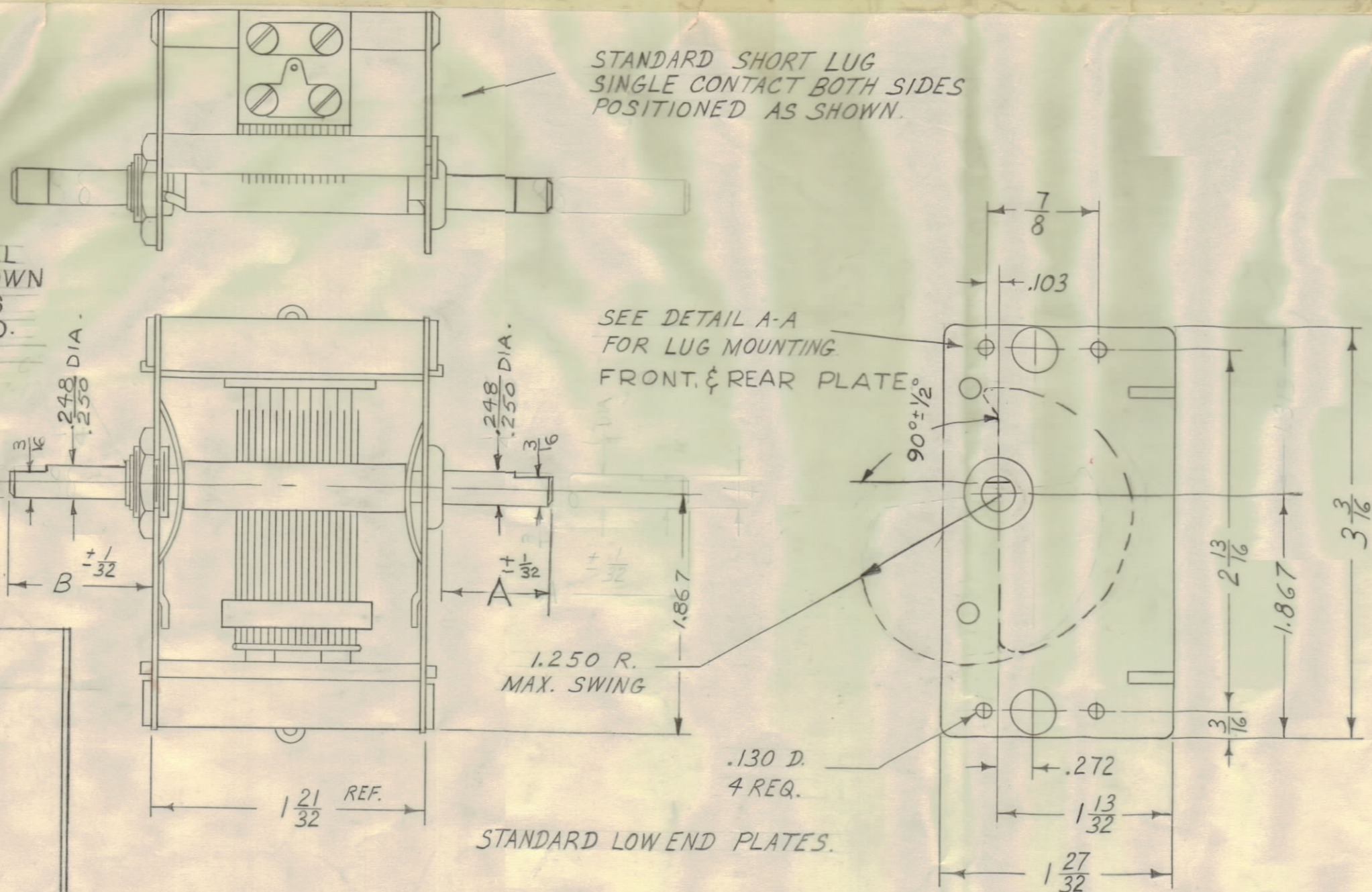


SHAFTS SHALL BE MESHED IN SHOWN $\pm 1/2^\circ$ WHEN PLATES ARE FULLY MESHED.

% OF ROTATION	CAP.(mmf) 21 PLATES
0	0
10	4.7
20	14.3
25	19.8
30	26.1
40	41.7
50	63.9
60	95.4
70	136.1
75	158.5
80	181.4
90	226.7
100	270.0
MIN	12.5

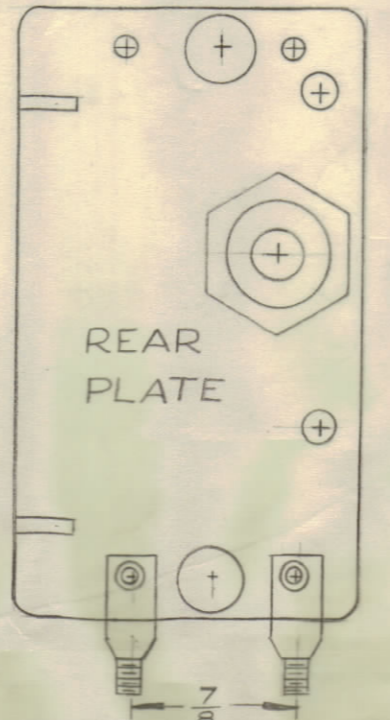
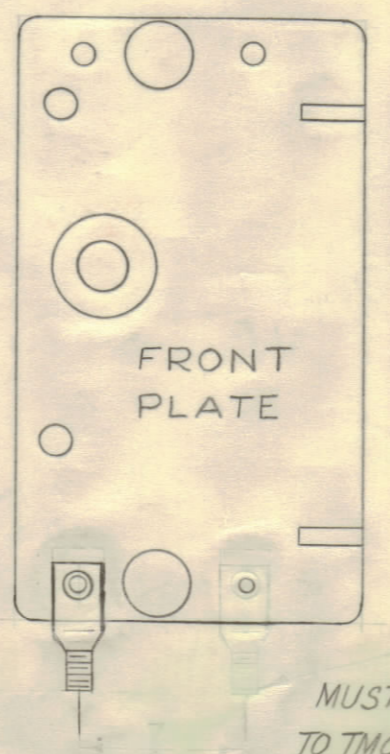
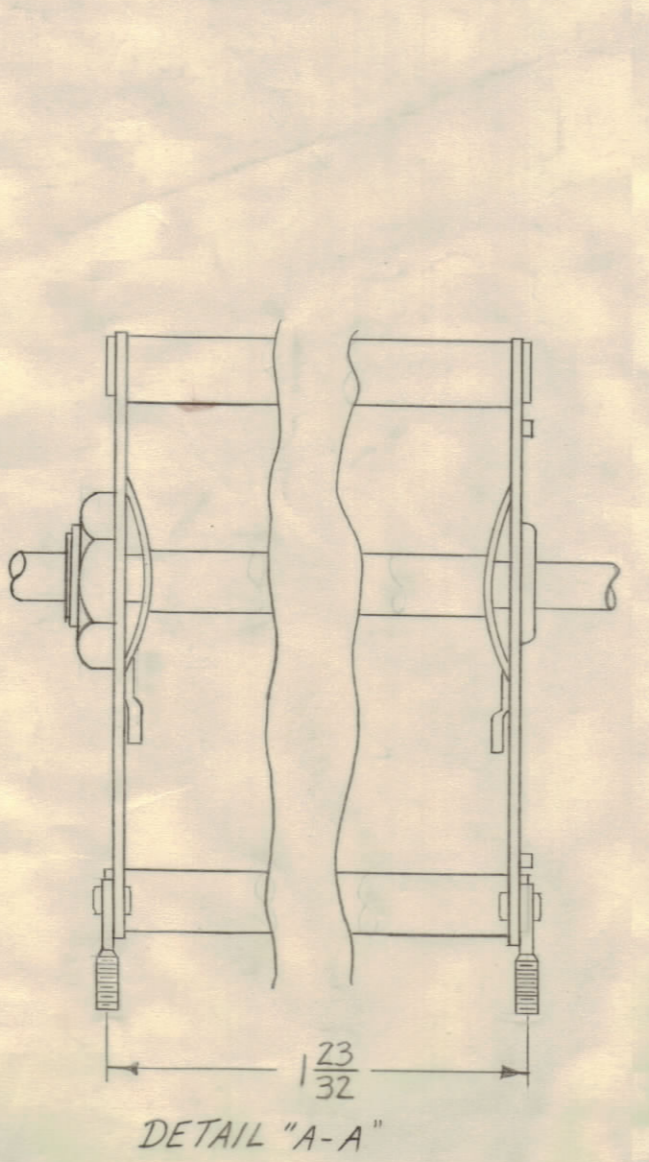
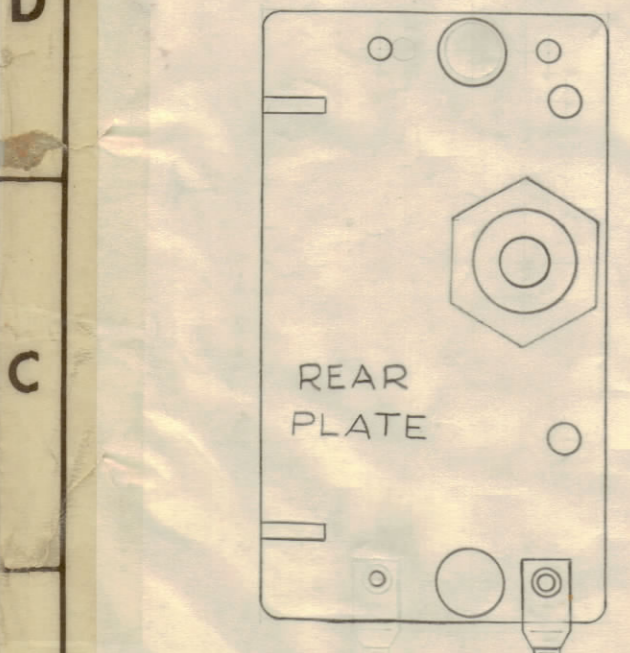
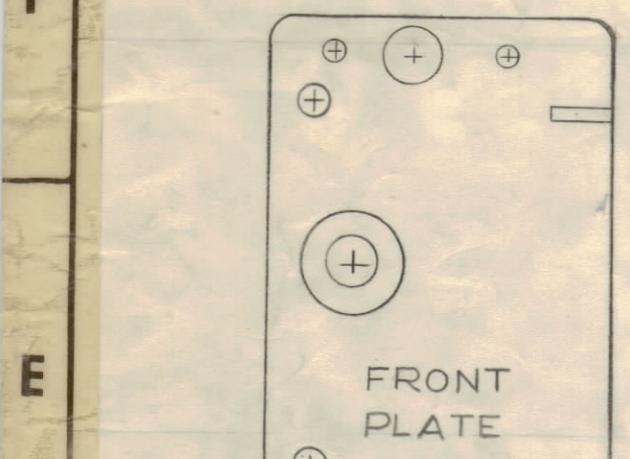
NOTE:

SHAFT FLATS SHALL BE IN POSITION SHOWN $\pm 1/2^\circ$ WHEN PLATES ARE FULLY MESHED.



TMC PART Nos.	SHAFT FLATS		SHAFT LENGTH DIM.		USED ON MODEL	QUAN. PER UNIT	LUG DETAIL
	A	B	A	B			
CB-157-1	3/16	5/16	7/32	7/16	CHG-1	3	"A"
CB-157-2	3/4	5/16	1 1/2	7/16	CHG-1	1	"B"

SERIES 17 - TYPE K 1 SECTION.
 C. C. W. ROTATION FOR MAX. CAP.
 CERAMIC STATOR INSULATION.
 SECTION
 STEEL ROTOR PLATES - 11
 STEEL STATOR PLATES - 10
 AIR GAP - .0235
 MAX. CAP. - APPROX. 282
 CAP. TOL. - ACCORDING TO RADIO COND. CORP. SPECS.
 ROTOR SHAFT - COLD ROLLED STEEL.
 LENGTHS AS SPEC. IN CHART.
 WIPERS - SPRING BRASS - POSITIONED AS SHOWN,
 AND SOLDER TO END PLATES.
 FINISH - ALL PARTS - CADMIUM PLATE.



NOTICE TO PERSONS RECEIVING THIS DRAWING

THE TECHNICAL MATERIEL CORPORATION claims proprietary right in the material disclosed hereon. This drawing is issued in confidence for engineering information only and may not be reproduced or used to manufacture anything shown hereon without permission from THE TECHNICAL MATERIEL CORPORATION to the user. This drawing is loaned for mutual assistance and is subject to recall at any time.

Property of:
 THE TECHNICAL MATERIEL CORPORATION
 MAMARONECK, NEW YORK

DETAIL-B
 CB-157-2
 SPADE LUGS MUST BE EQUIVALENT TO TMC TYPE SC-106-1. (3 REQ.)

ISSUE	ZONE	DESCRIPTION	DATE	CH. NO.	DRAFTS	CHECKER	ENG. APP.
G		101% CENTERLINE ADDED DIM 1.317	11/23/65	15186			
F	64	90° ± 1/2° ADDED	11/21/64	11273	A.M.		
F	67	SHAFT FLATS NOTE ADDED					

SCALE: 5401-131 F 5401-51

MAXIMUM ALLOWABLE TOLERANCES HAVE BEEN DETERMINED AND ANY DEVIATIONS WILL BE CAUSE FOR REJECTION.
 REMOVE ALL BURRS AND SHARP EDGES

REQ PER UNIT	MODEL	SECTION	ASSY. NO.	DATE
1	CHG-1	MF/RF		9-13-60

REQ. ITEM	PART NO.	DESCRIPTION	SYMBOL
		THE TECHNICAL MATERIEL CORP. MAMARONECK, NEW YORK	
		STOCK SIZE	
		MATERIAL	
		TYPE & TEMPER	
		HEAT TREAT. SPEC.	
		FINISH & SPEC. NO.	

CAPACITOR, VARIABLE, AIR

DRAWN: [Signature]
 ELEC. DES. APP. [Signature]
 MECH. DES. APP. [Signature]
 CHECKED: [Signature]
 FINAL APPROVAL: [Signature]
 CB-157