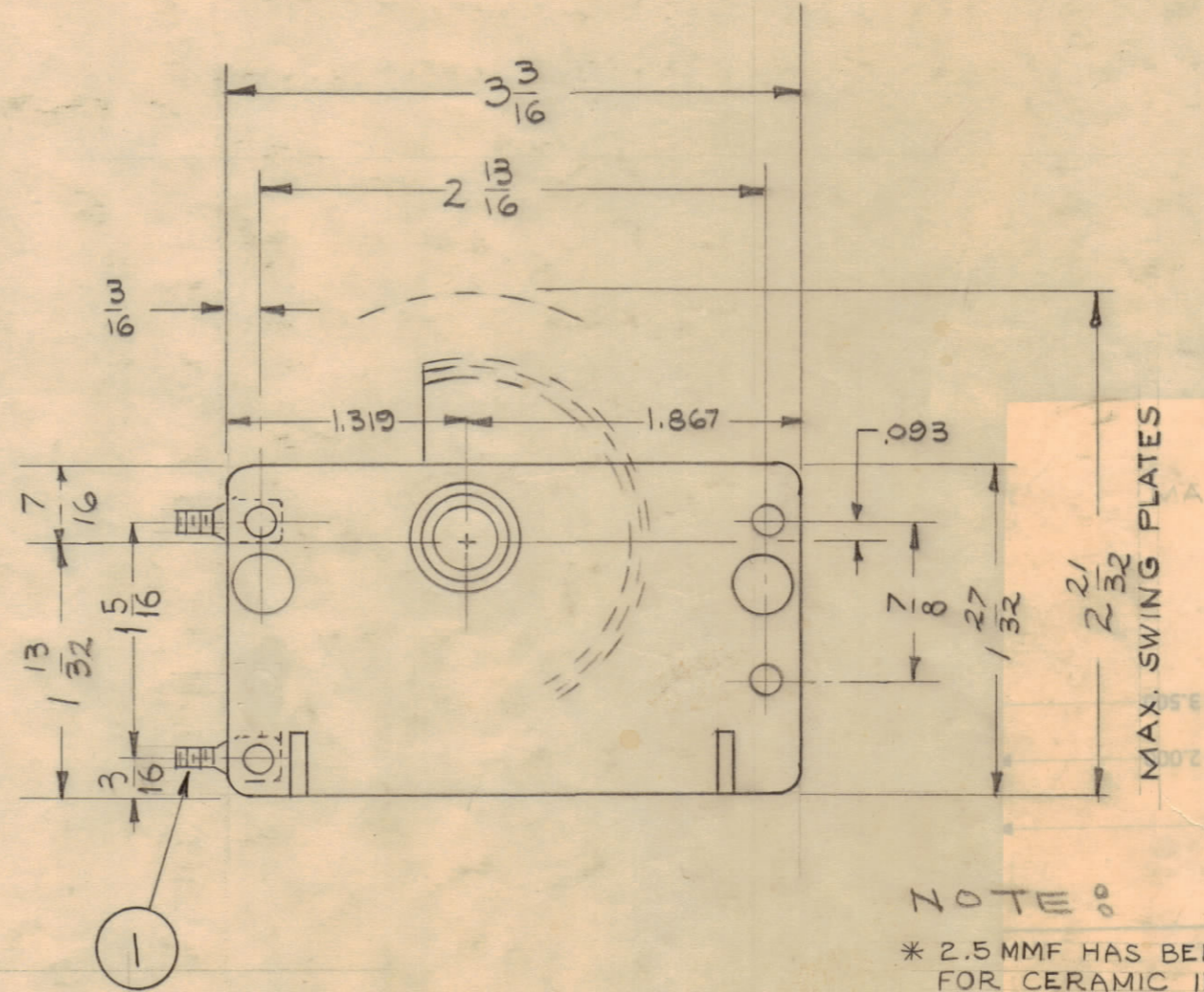
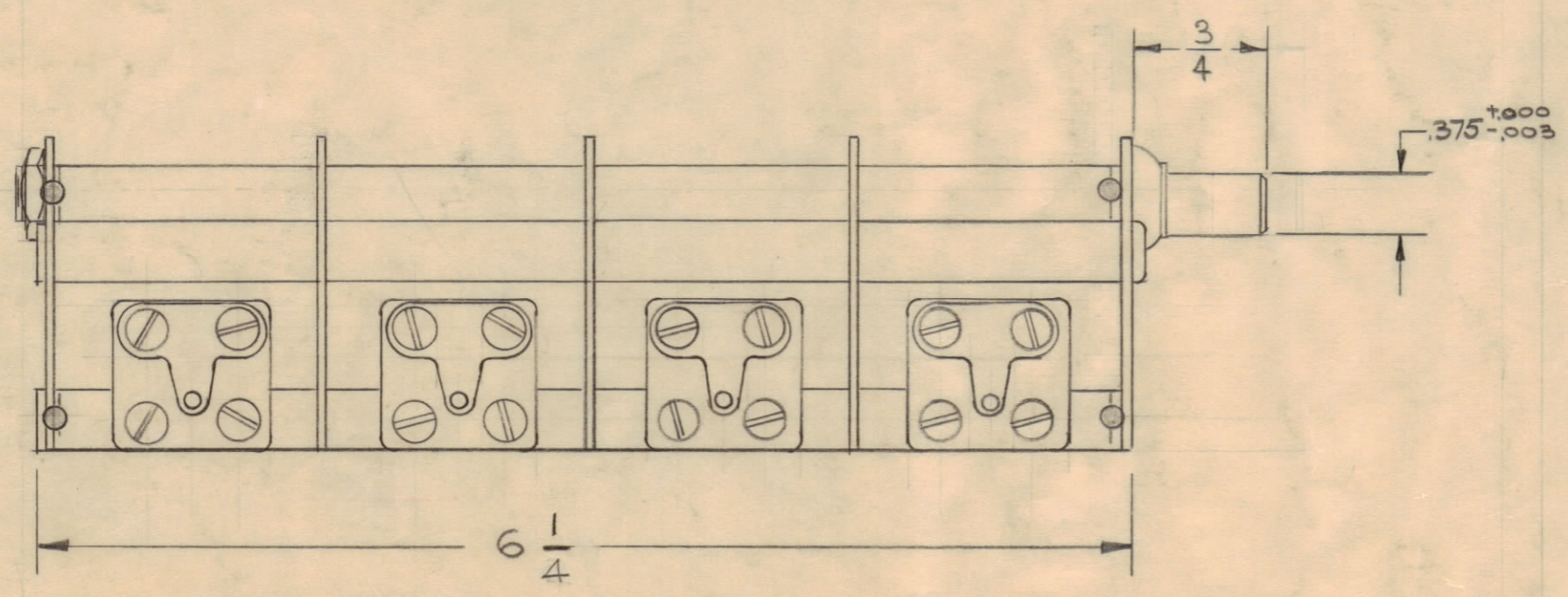
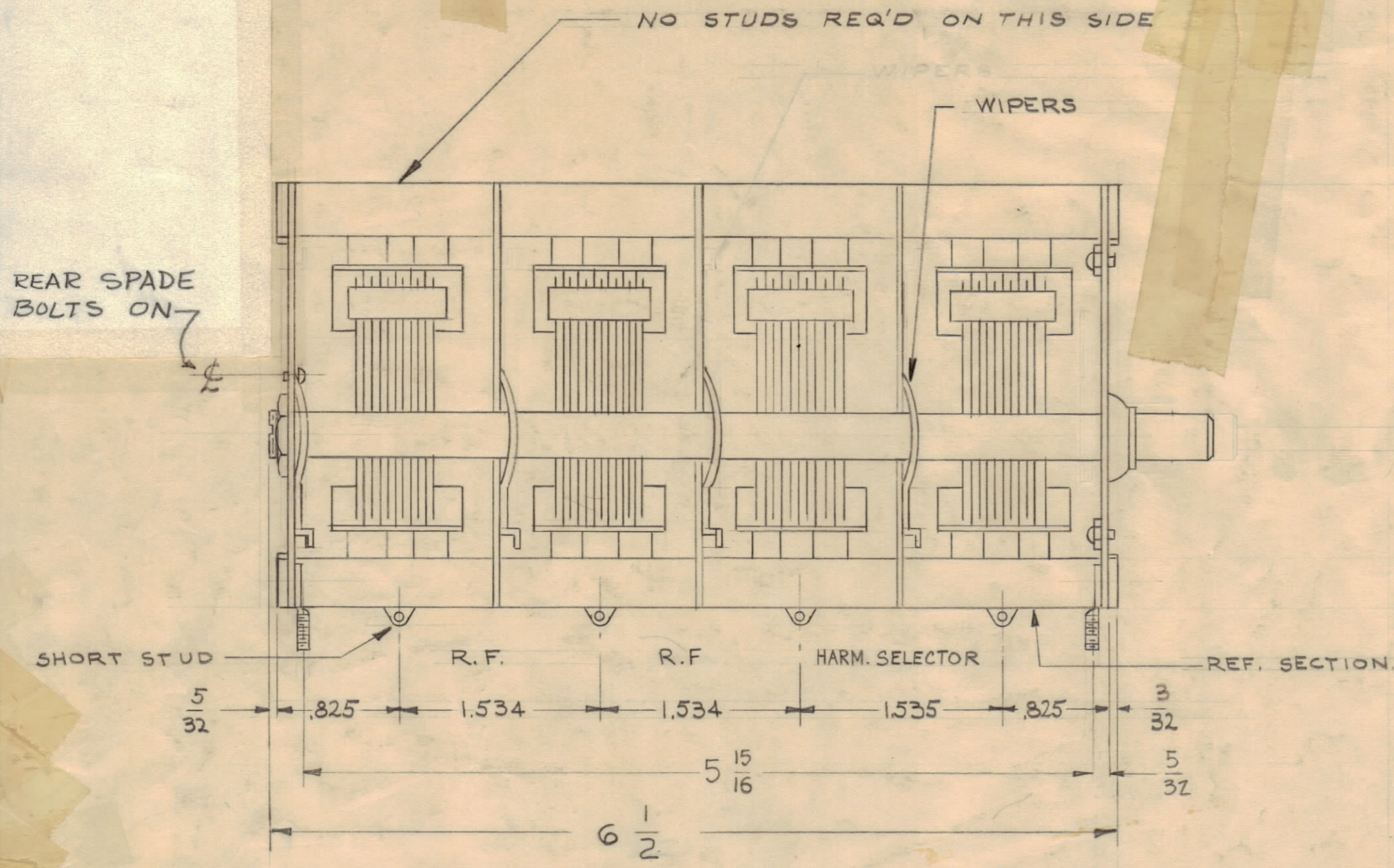


TYPE - SERIES. 417
 FREQUENCY DISTRIBUTION CURVE - K
 AIR CAP. .018
 STEEL PLATES, CADMIUM PLATED. SLOTTED END ROTOR PLATES, 9 SLOTS.
 SECTIONS 4
 25 PLATES PER SECTION. WIPERS 4
 CAPACITY INCREASES CLOCKWISE
 SHORT FRAME
 CONDENSER CALIBRATED EVERY 10%
 INSULATION - CERAMIC



CALIBRATION	
CAL % ROT	C
0	0
10	7.2
20	21.8
25	30.5
30	40.0
40	64.1
50	98.6
60	147.1
70	210.9
75	245.2
80	280.8
90	351.9
100	420.0
	125

NOTE:
 * 2.5 MMF HAS BEEN ADDED FOR CERAMIC INSULATION

NOTICE TO PERSONS RECEIVING THIS DRAWING
 THE TECHNICAL MATERIEL CORPORATION claims proprietary right in the material disclosed hereon. This drawing is issued in confidence for engineering information only and may not be reproduced or used to manufacture anything shown hereon without permission from THE TECHNICAL MATERIEL CORPORATION to the user. This drawing is loaned for mutual assistance and is subject to recall at any time.
 Property of:
 THE TECHNICAL MATERIEL CORPORATION
 MAMARONECK, NEW YORK

ISSUE	ZONE	DESCRIPTION	DATE	CH. NO.	DRAFTS	CHECKER	ENG. APP.
D	FC	CHG'D 6 1/4 TO 6 1/2	11-29-66	17341	RME	QC	[Signature]
C	FS-6	R.F. WAS MIX & HARM. SELECTOR WAS O.S.C.	2-7-61	4096	M.H.F.	QC	[Signature]
B	FS-5	3/4 DIM WAS 1" ON SHAFT	1/18/61	3954	DM	QC	[Signature]
A	H3	.018 WAS .023	9-23-60	2547	WJ	QC	[Signature]
A	B2	NOTE ADDED					

REQ PER UNIT	MODEL	SECTION	ASSY. NO.	DATE
1	CHO			5-9-

REQ. ITEM	PART NO.	DESCRIPTION	SYMBOL
4	1	SC-106-1	BOLT, SPADE (REG.)
THE TECHNICAL MATERIEL CORP. MAMARONECK, NEW YORK			
CAPACITOR, VARIABLE, AIR			
MATERIAL			
TYPE & TEMPER			
TREAT. SPEC.			
ISH & SPEC. NO.			