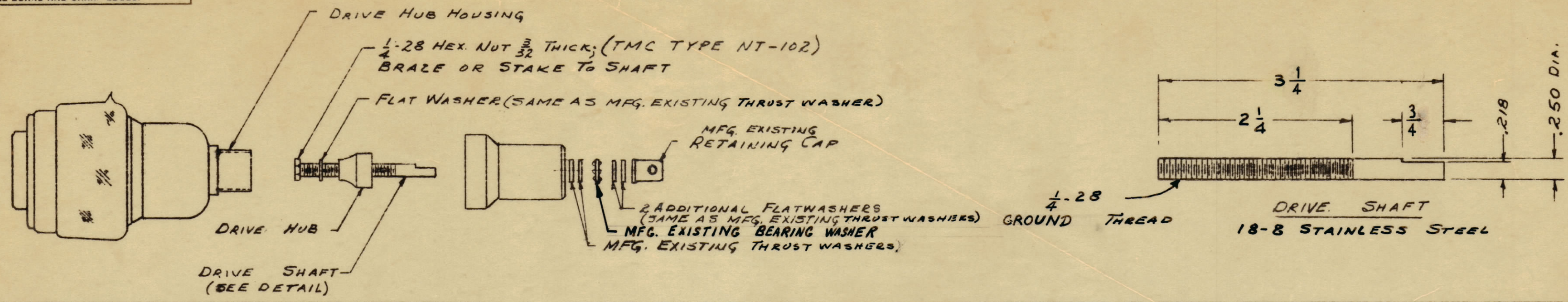
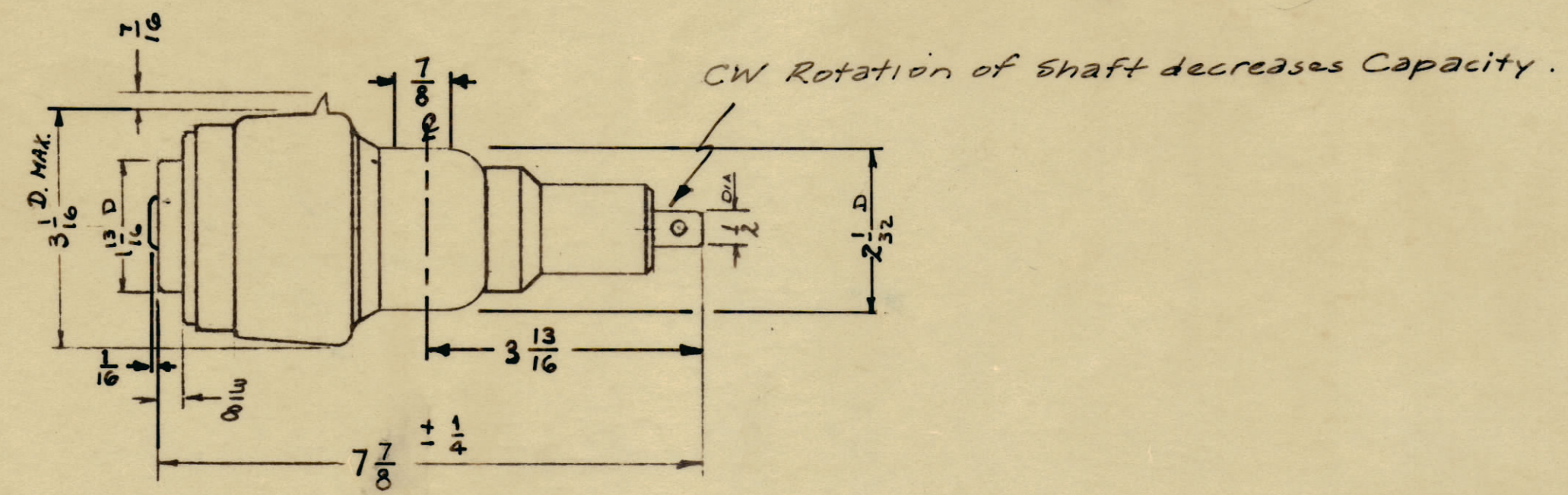


IF IT IS FOUND DESIRABLE TO CHANGE ANY TOLERANCE OR OTHER DETAIL SPECIFIED ON THIS DRAWING NOTIFY THE PURCHASER PROMPTLY.

MAXIMUM ALLOWABLE TOLERANCES HAVE BEEN DETERMINED AND DEVIATIONS WILL BE CAUSE FOR REJECTION. REMOVE ALL BURRS AND SHARP EDGES.



CAPACITANCE - 5-750 μ fd
 VOLTAGE - 5KV PEAK
 CURRENT RATING - 42 AMPS RMS



FINISHED ASSEMBLED ITEM

CB-147 D

MOUNTING FLANGE REF. for TMC USE ONLY

Fixed End Flange - PO-185-1
 Variable End Flange - PO-185-2

TMC Purchasing Note - Do Not order these Mtg. Flanges with this Capacitor, as they may not be required.

NOTICE TO PERSONS RECEIVING THIS DRAWING

THE TECHNICAL MATERIEL CORPORATION claims proprietary right in the material disclosed hereon. This drawing is issued in confidence for engineering information only and may not be reproduced or used to manufacture anything shown hereon without permission from THE TECHNICAL MATERIEL CORPORATION to the user. This drawing is loaned for mutual assistance and is subject to recall at any time.

Property of:
 THE TECHNICAL MATERIEL CORPORATION
 MAMARONECK, NEW YORK

D	1	ON TOL. CHART FRAC. DIM. 1/32 WAS 1/64	11-9-61	5815	GDL		
C	3	ON FINISHED ASSEMBLY 7/8 DIM WAS 7/16					
	2	ON DRIVE SHAFT 3/4 DIM WAS 3 3/16	6-9-61	5041	M.A.F.	JCB	
	1	ON DRIVE SHAFT 3/4 DIM WAS 13/16					
B	3	7/8 DIM WAS 7 3/4					
	2	CW ROTATION WAS CCW	5-12-61	4879	M.A.F.		
	1	DIMS. 3 13/16, 7/8, 9 1/16 ADDED					
A	1	SHAFT WAS 3 1/16	7-22-60	2629	CY	HDE	
		SHAFT FLAT WAS 5/8					

ISSUE	ITEM	CHANGED FROM	DATE	CH. NO.	DRAFTS	CHECKER	ENG. APP.
TOLERANCES		SCALE: NTS					
ALL OTHERS	DEC. DIM. \pm	FRAC. DIM. \pm 1/32	DRILL, PUNCH, COMMERCIAL STOCK SIZES AND MANUFACTURERS TOLERANCES ARE NOT INCLUDED.				

REF. TMC - CB-143-750-5A } MODIFIED AS SHOWN
 UCSL-5-750-5KV

REQ. ITEM	PART NO.	DESCRIPTION	SYMBOL
		THE TECHNICAL MATERIEL CORP. MAMARONECK, NEW YORK	
STOCK SIZE		CAPACITOR, VAR., Vac. 5-750 μ fd	
MATERIAL		(W/LOCKING SHAFT)	
TYPE & TEMPER		16	
HEAT TREAT. SPEC.		CHECKED	FINAL APPROVAL
FINISH & SPEC. NO.		CB-147 D	

1	AM-103	A-1693		
REQ. PER UNIT	MODEL	PROJECT NO.	ASSY. NO.	DATE
USED ON				