

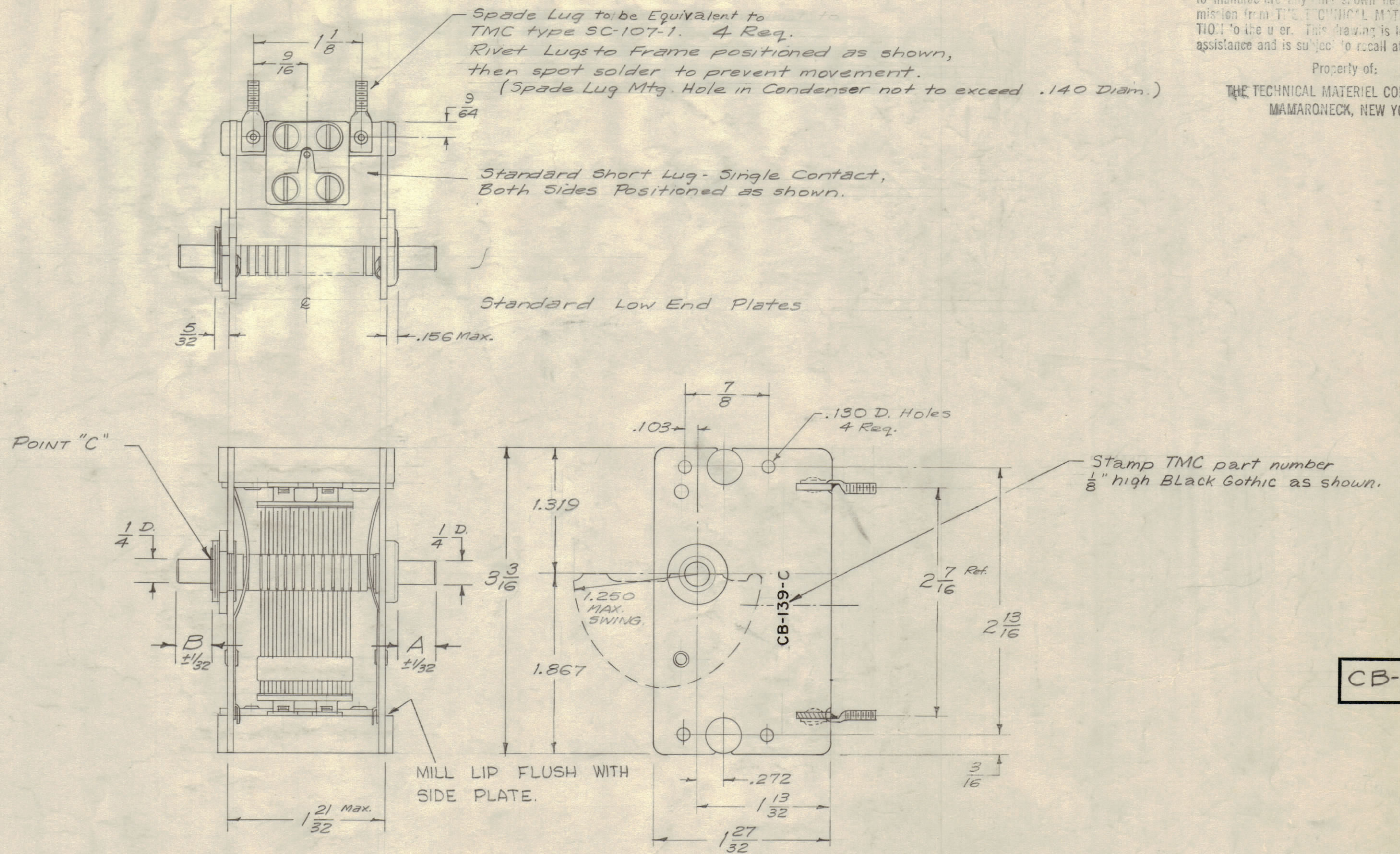
IF IT IS FOUND DESIRABLE TO CHANGE ANY TOLERANCE OR OTHER DETAIL SPECIFIED ON THIS DRAWING NOTIFY THE PURCHASER PROMPTLY.

MAXIMUM ALLOWABLE TOLERANCES HAVE BEEN DETERMINED AND DEVIATIONS WILL BE CAUSE FOR REJECTION. REMOVE ALL BURRS AND SHARP EDGES

NOTICE TO PERSONS RECEIVING THIS DRAWING

THE TECHNICAL MATERIEL CORPORATION claims proprietary right in the material disclosed hereon. This drawing is issued in confidence for engineering information only and may not be reproduced or used to manufacture any line shown hereon without permission from THE TECHNICAL MATERIEL CORPORATION to the user. This drawing is loaned for mutual assistance and is subject to recall at any time.

Property of:
THE TECHNICAL MATERIEL CORPORATION
MAMARONECK, NEW YORK



CB-139 C

SPECS.

MFG. - Radio Corp. Series 7 - Type K-1524
ROTATION-CCW for maximum Capacitance.
STATOR INSULATION - Ceramic.

ROTOR PLATES - Steel, Quan. 11
STATOR PLATES - Steel, Quan. 10
AIR GAP - .0235
MAX. CAPACITANCE - 282 μ f. \pm 5 μ f.
CAPACITANCE TOL. - in accordance with Radio Corp. Spec.

ROTOR SHAFT - Cold Rolled Steel, Lengths as per chart.
WIPERS - Spring Brass, Positioned as shown, and soldered to end plates.
FINISH - All parts to be cadmium Plated.

% OF ROTATION	ΔC (μ f.)
0	0
10	4.7
20	14.3
25	19.8
30	26.1
40	41.7
50	63.9
60	95.4
70	136.1
75	158.5
80	181.4
90	226.7
100	270.0
MIN.	12.5

TMC NO.	SHAFT LENGTH DIM.		USED ON MODEL	QUAN PER UNIT	SYM
	A	B			
CB-139-1	$\frac{3}{8}$	$\frac{3}{8}$	RFA-1 RFB-1 RFC-1 RFD-1	1	
CB-139-2	$\frac{3}{8}$	FLUSH WITH POINT "C"	RFA-1 RFB-1	1	
CB-139-3	$\frac{3}{4}$	FLUSH WITH POINT "C"	RFC-1 RFD-1	1	

NOTE - THIS IS A MODIFIED CB-128

REQ. ITEM	PART NO.	DESCRIPTION	SYMBOL
THE TECHNICAL MATERIEL CORP. MAMARONECK, NEW YORK			
CAPACITOR, VARIABLE, AIR			
MATERIAL		WEIGHT PER PC.	
TYPE & TEMPER		16 $\frac{5}{23}$ 58	RFB
DRAWN		ELEC. DES. APP.	MECH. DES. APP.
HEAT TREAT. SPEC.		CHECKED	FINAL APPROVAL
FINISH & SPEC. NO.		CB-139 C	

ISSUE	ITEM	CHANGED FROM	DATE	CN. NO.	DRAFTS	CHECKER	ENG. APP.
C	1	NOTES, CHART SPECS & SPADE LUG NOTE MOD. TMC STAMP ADDED	8-13-65	9763	AK.	WAF	WAB
B	1	LIP FLUSH WITH SIDE PLATE; NOTE ADDED	4-2-62	6579	EE	WAF	RC
A	1	CB-139-3 was added to M/L	8-24-59	1211	DM		

TOLERANCES SCALE: 5-401-4A (SEE 11, TYPE K, 1524)

ALL OTHERS DEC. DIM. \pm $\frac{1}{64}$ DRILL, PUNCH, COMMERCIAL STOCK
FRAC. DIM. \pm $\frac{1}{64}$ SIZES AND MANUFACTURERS
ANGULAR DIM. \pm TOLERANCES ARE NOT INCLUDED.

REQ PER UNIT	MODEL	PROJECT NO.	ASS'Y. NO.	DATE
	RFD-1	PAL 1000		
	RFC-1	GPT-10K		
	RFB-1	GPT-10K		
CHART	RFA-1	PAL-350		6-23-58
	USED ON			