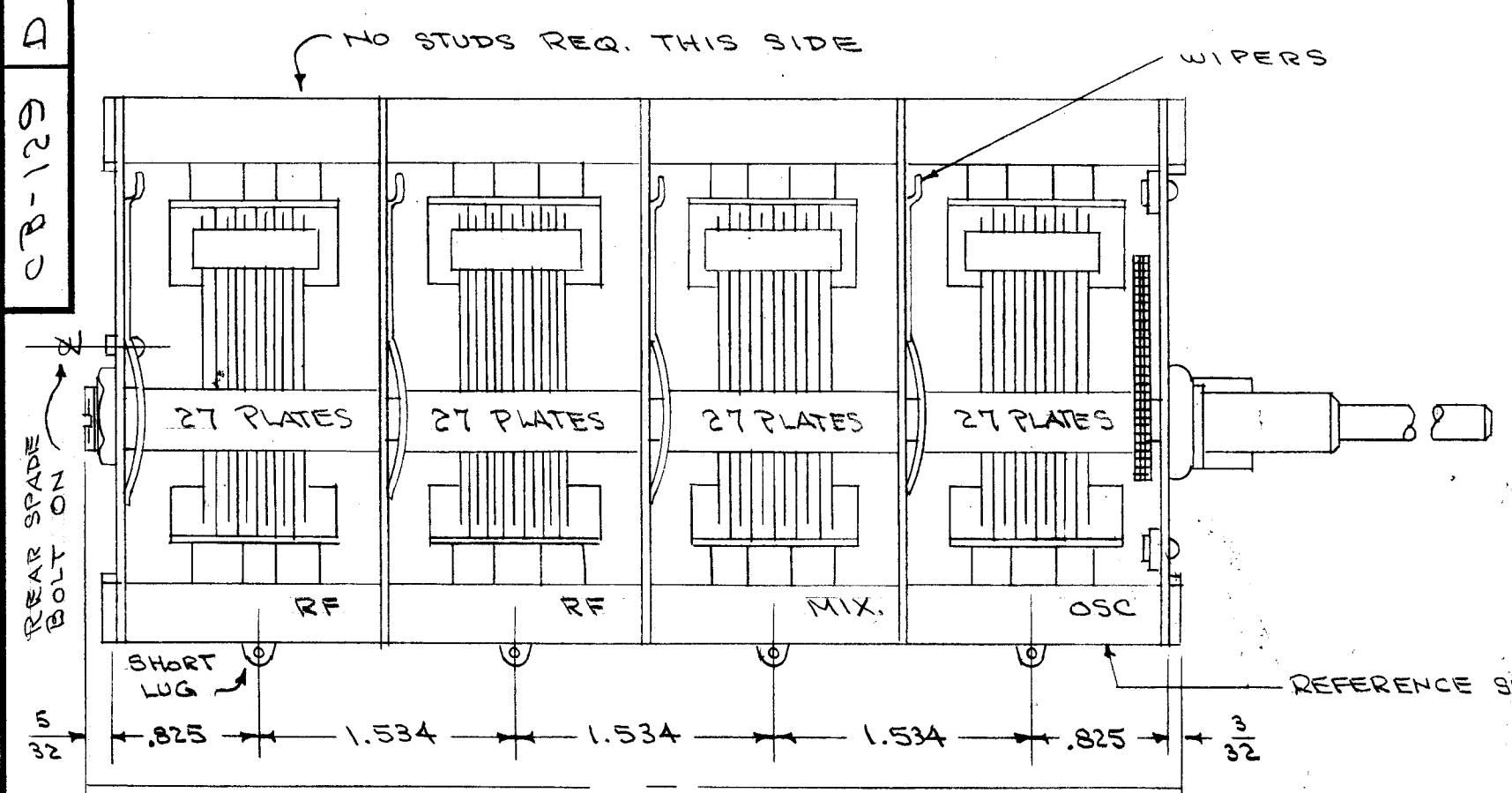
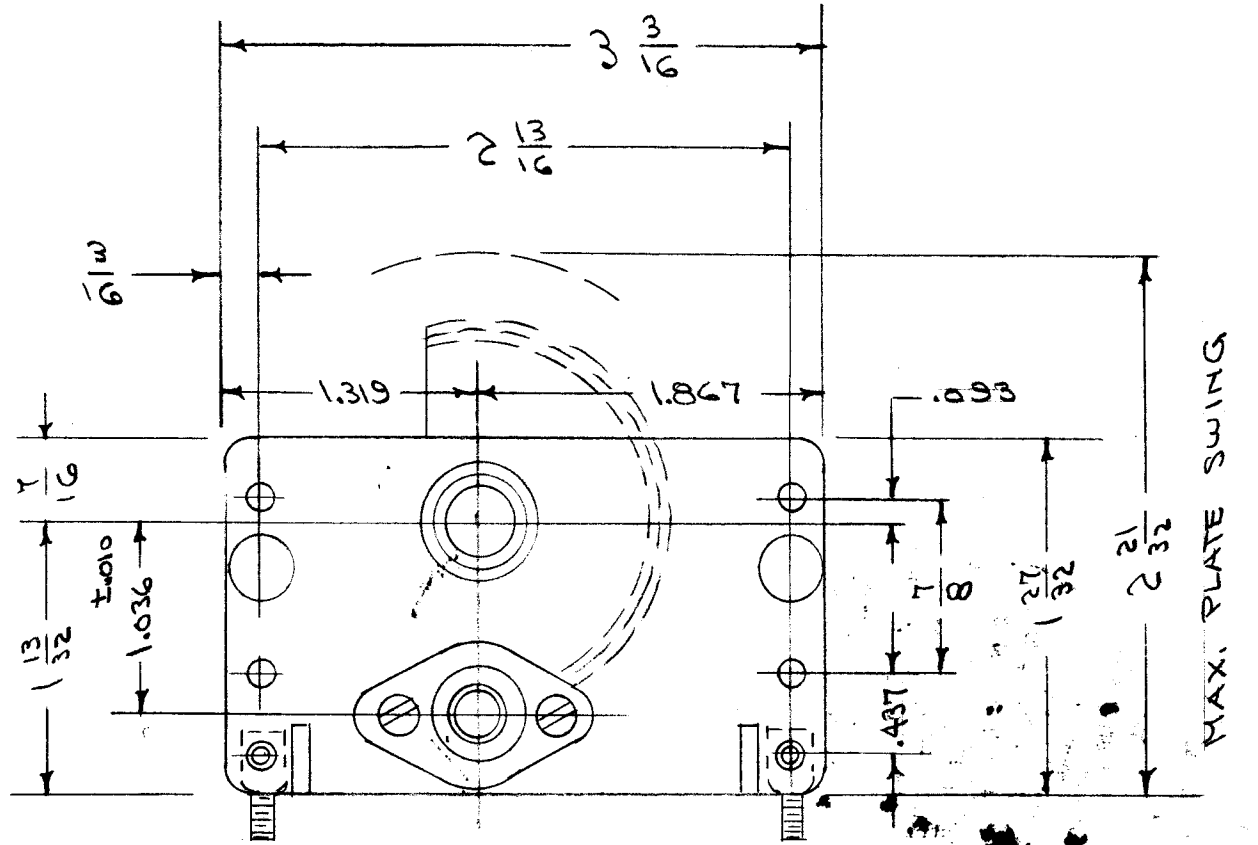
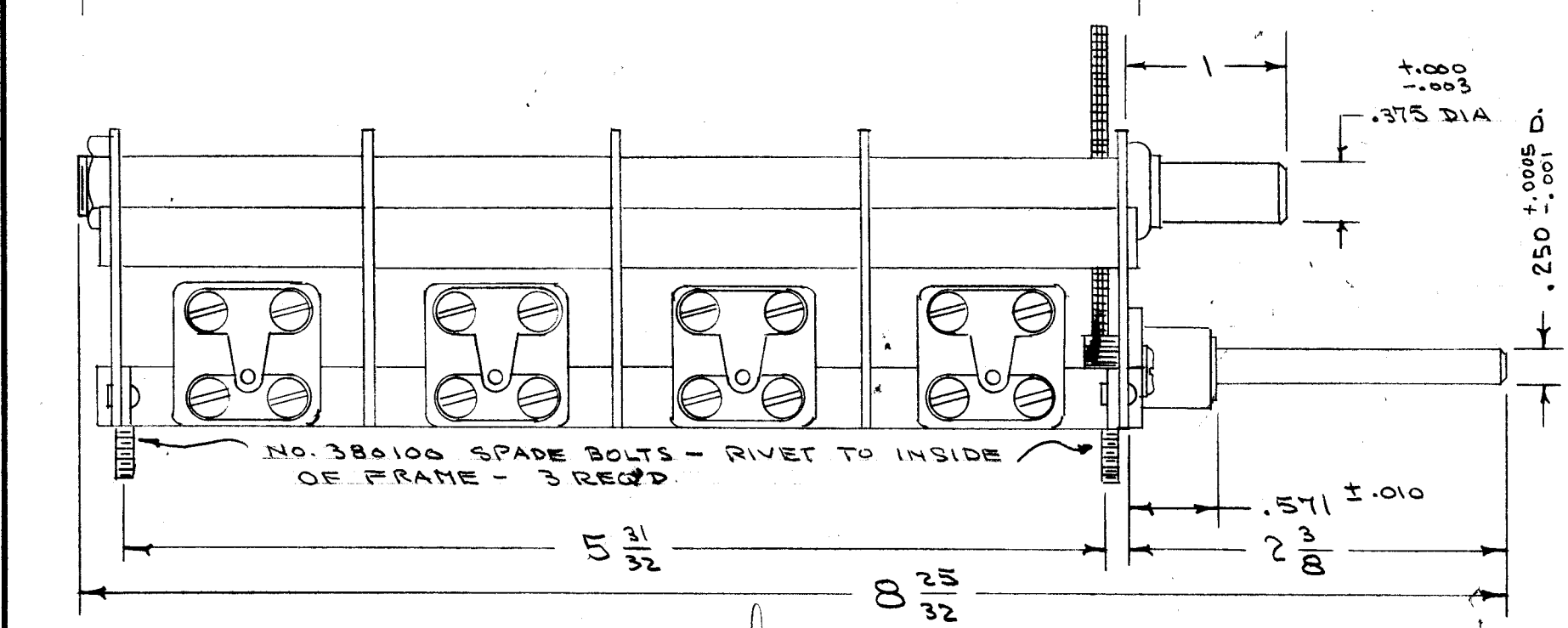


CB-129



CALIBRATION	
% ROT.	C
0	0
10	7.8
20	23.8
30	43.4
40	69.5
50	106.8
60	159.3
70	228.4
80	304.2
90	381.3
100	455.0
MIN.	10.6

TYPE-SERIES 417
 FREQ. DIST. CURVE-K
 AIR GAP-.018
 PLATES-STEEL, CAD. PLATED
 SECTIONS-4
 PLATES PER SECTION-27
 WIPERS-4
 INSULATION-CERAMIC
 CAP. INCREASE-CLOCKWISE
 FRAME-SHORT
 DRIVE-10:1 90 TOOTH SPLIT GEAR
 WITH 9 TOOTH PINION
 TAKE UP ON SPLIT GEAR ASSEMBLY MUST BE SET AT NO LESS THAN
 2 TEETH. TO TEST FOR SUFFICIENT SPRING TENSION ROTATE
 PINION SHAFT TO BRING ROTOR TO FULLY OPEN POSITION AGAINST
 STOP. RELEASE SHAFT AND THE ANTI-BACKLASH GEAR SHOULD
 ROTATE PINION SHAFT SLIGHTLY BACKWARDS.
 COND. CALIBRATED EVERY 10°



REF: RADIO CONDENSER CORP

ISSUE	ITEM	CHANGED FROM	DATE	CH. NO.	DRAFTS	CHECKER	ENG. APP.
D	2	SHAFT BUSHING DIM DELETED	7/15/57	4	SC.	J.H.D.	[Signature]
C	1	INFO DELETED FROM CHART	8/20/56	3	J.H.D.	P.L.K.	A.J.J.
B	1	TENSION NOTE ADDED	8/9/56	2	J.H.D.	P.L.K.	A.J.J.
A	1	INFO ADDED TO CAL. CHART	3/21/56	1	[Signature]	P.L.K.	

TOLERANCES		SCALE:	
DEC. DIM. ±		MAXIMUM ALLOWABLE TOLERANCES HAVE BEEN DETERMINED AND ANY DEVIATIONS WILL BE CAUSE FOR REJECTION. REMOVE ALL BURRS AND SHARP EDGES	
FRAC. DIM. ±			
ANGULAR DIM. ±			

1	FFRD-1-2-3	E-458-P	11-1-55
REQ. PER UNIT	MODEL	PROJECT NO.	ASS'Y. NO.
			DATE
USED ON			

REQ. ITEM	PART NO.	DESCRIPTION	SYMBOL
THE TECHNICAL MATERIEL CORP.			
MAMARONECK, NEW YORK			
STOCK SIZE		CAPACITOR, VARIABLE	
MATERIAL		27 PLATE, AIR TUNING	
TYPE & TEMPER		HEAT TREAT. SPEC.	DRAWN
FINISH & SPEC. NO.		ELEC. DES. APP.	MECH. DES. APP.
		CDR. 4/155	G.T.O.
		[Signature]	[Signature]
		PLK 4/19/56	CB-129 D