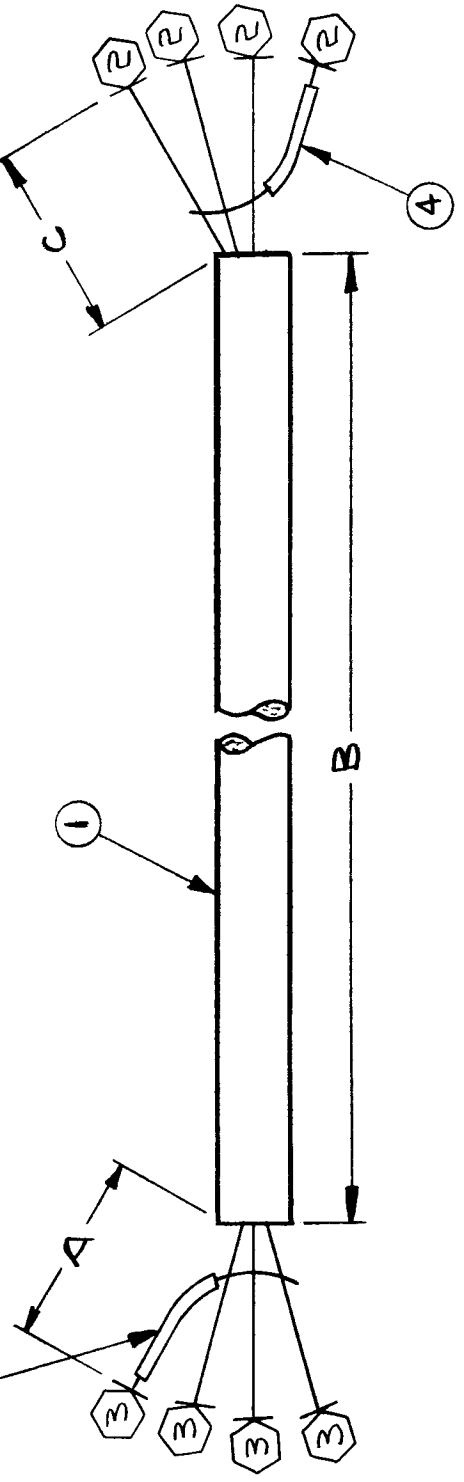
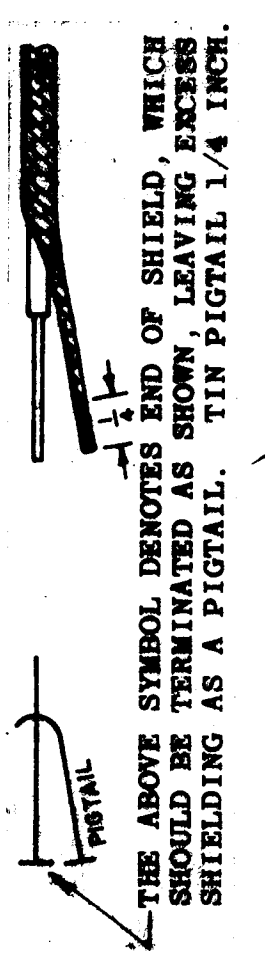


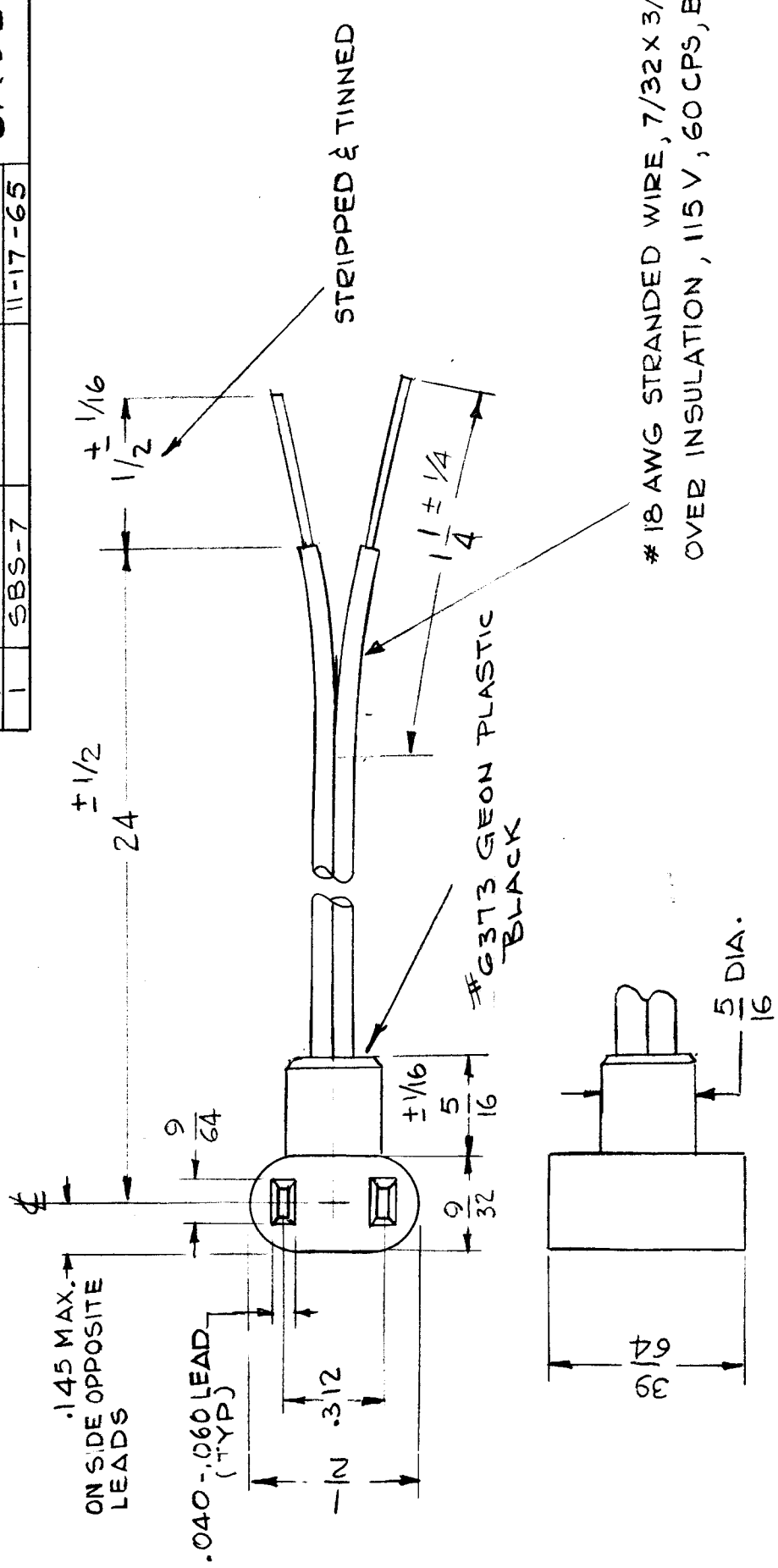
TMC PART NUMBER	CA908-1	A	B	C	FROM	TO
	4	4	36	6	HPP-1	AC FILTER
						CA908 A



REQ. ITEM	PART NO.	DESCRIPTION	SYMBOL
X 5	BS100	SOLDER, TIN ALLOY	
4	PX100-1-085	SLEEVING, INSULATION	
4	TE159-34158	TERMINAL, SOLDERLESS	
4	TE159-34161	TERMINAL, SOLDERLESS	
	WI142-12	CABLE, SPECIAL PURPOSE	
REQ. PER UNIT	MODEL	DATE	USED ON
	RAK-473	7.15.64	CA908 A
MATERIAL		THE TECHNICAL MATERIEL CORP. MAMARONECK, NEW YORK	
FINISH & SPEC. NO.		CABLE ASSY, AC POWER	
TYPE & TEMPER		DRAWN BY [Signature] @ 7-4-64	
HEAT TREAT. SPEC.		CHECKED BY [Signature] 9-4-64	
MATERIAL		FINAL APPROVAL [Signature]	
SCALE		CODE	
DATE		92364 12437	
DRAFTS		ORIGINAL RELEASE FOR PRODUCTION	
CHECKER		X1 ITEM (4) ADDED	
ENG. APP.		EXPER. RELEASE	
SCALE		TOLERANCES	
DATE		FRACTIONS	
DRAFTS		X ± .05	
CHECKER		XX ± .01	
ENG. APP.		.XXX ± .005	
SCALE		± 0° 30'	
DATE		A	
DRAFTS		CA908 A	
CHECKER			
ENG. APP.			

# STANDARD DRAWING

REQ. PER UNIT	1	USED ON	CA925
MODEL	SBS-7	ASSY. NO.	
		DATE	11-17-65

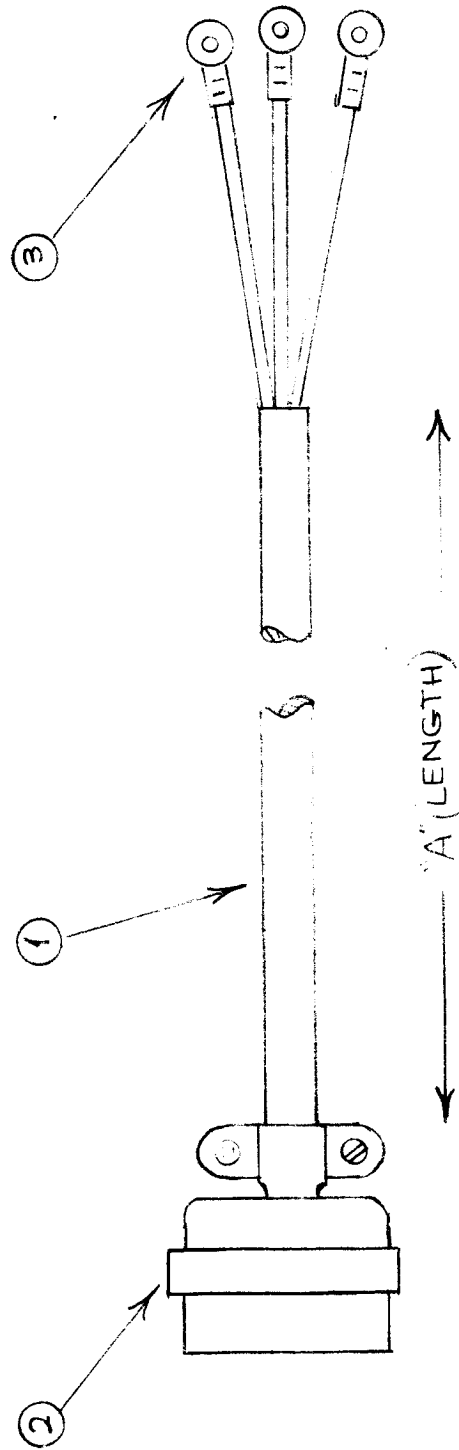


REQ. ITEM	PART NO.	DESCRIPTION	SYMBOL
		THE TECHNICAL MATERIEL CORP. MAMARONECK. NEW YORK	
		CABLE, ASS'Y.	
		POWER, ELECTRICAL	
		G.D.L. 11-17-65	11/19/65
		DRAWN	CHECKED
		TYPE & TEMPER	HEAT TREAT. SPEC.
		FINISH & SPEC. NO.	
		ELEC. DES. APP.	MECH. DES. APP.
			FINAL APPROVAL
			11/19/65
			CA925

ORIGINAL RELEASE  
 DATE 11-19-65  
 SCALE DO NOT SCALE  
 UNLESS OTHERWISE SPECIFIED DIMENSIONS ARE IN INCHES AND INCLUDE CHEMICALLY APPLIED OR PLATED FINISHES  
 TOLERANCES  
 .X ± .05  
 .XX ± .01  
 .XXX ± .005  
 FRACTIONS ± 1/64 ANGLES ± 0° 30'

TMC PART NO.	A
CA933-1	15'
CA933-2	9'

REQ. PER UNIT	1	MODEL	RAK102	USED ON	ASSY. NO.	DATE	CA 933	X
						9-14-64		



**OBSOLETE** SEE CA 696-243  
10.27.64 2.L

**PROTO-TYPE DRAWING**  
NOT FOR PRODUCTION  
Engineering Approval Required For Release App. By

*Technical drawing of a cable*  
*10.27.64 2.L*

3	3	TE155-34170	LUG, SOLDERLESS	SYMBOL	
1	2	PL176	PLUG, TWIST LOCK, FEMALE		
X	1	WI121-1	WIRE, RUBBER SHEATHED		
	REQ. ITEM	PART NO.	F. EATON	DESCRIPTION	
			THE TECHNICAL MATERIEL CORP. MAMARONECK, NEW YORK		
		STOCK SIZE	CABLE, POWER, AC		
		MATERIAL	SPR		
	TYPE & TEMPER	HEAT TREAT. SPEC.	DRAWN	CHECKED	FINAL APPROVAL
					CA 933
	FINISH & SPEC. NO.		ELEC. DES. APP.	MECH. DES. APP.	

X	EXPERIMENTAL RELEASE	9-14-64	X	FLG	CH. NO.	DRAFTS	CHECKER	ENG. APP.	
SYM	DESCRIPTION	DATE	CH. NO.	DRAFTS	CHECKER	ENG. APP.	SCALE		
UNLESS OTHERWISE SPECIFIED DIMENSIONS ARE IN INCHES AND INCLUDE CHEMICALLY APPLIED OR PLATED FINISHES									
TOLERANCES									
FRACTIONS									
DECIMALS									
ANGLES									
CODE									
A									

# STANDARD DRAWING

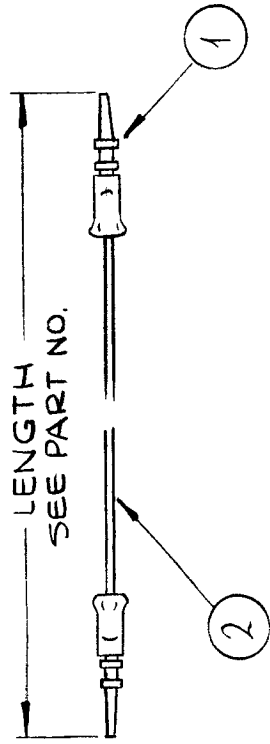
REQ. PER UNIT  
9

MODEL  
VLRB-1

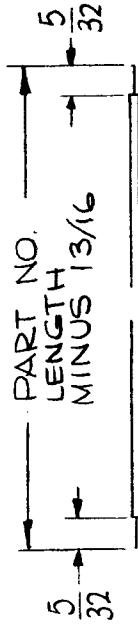
USED ON  
ASSY. NO.  
A3771

DATE  
10-21-64

CA943



LENGTH  
SEE PART NO.



PART NO.  
LENGTH  
MINUS 13/16

ITEM 2 COLOR CODE	ITEM 1 COLOR CODE
1	BRN
2	RED
3	ORN
4	YEL
5	GRN
6	BLU
7	VIO
8	GRY
9	WHT
0	BLK

EXAMPLE PART NO.

CA943 - 9 - 2.31

BASIC  
TMC NO.

COLOR  
CODE

LENGTH  
(TO 2 DEC. PLACES)

REQ. ITEM	DESCRIPTION	PART NO.	SYMBOL
9 2	WIRE ELECTRICAL INSULATED		
2 1	CONNECTOR PLUG, TAPERED PIN		
THE TECHNICAL MATERIEL CORP. MAMARONECK, NEW YORK LEAD, ELECTRICAL			
TYPE & TEMPER HEAT TREAT. SPEC.		DRAWN @ 10-26-64	CHECKED RDR
FINISH & SPEC. NO.		ELEC. DES. APP. 10/26/64	FINAL APPROVAL CA943

ORIGINAL RELEASE FOR  
PRODUCTION

EXP. RELEASE

DATE

SCALE

UNLESS OTHERWISE SPECIFIED  
DIMENSIONS ARE IN INCHES AND INCLUDE  
CHEMICALLY APPLIED OR PLATED FINISHES

FRACTIONS  
± 1/64  
ANGLES,  
± 0° 30'

TOLERANCES  
DECIMALS  
.X ± .05  
.XX ± .01  
.XXX ± .005

CODE  
A

REQ. PER UNIT  
1

USED ON  
MODEL  
TER 5K-50  
TER 5K-70

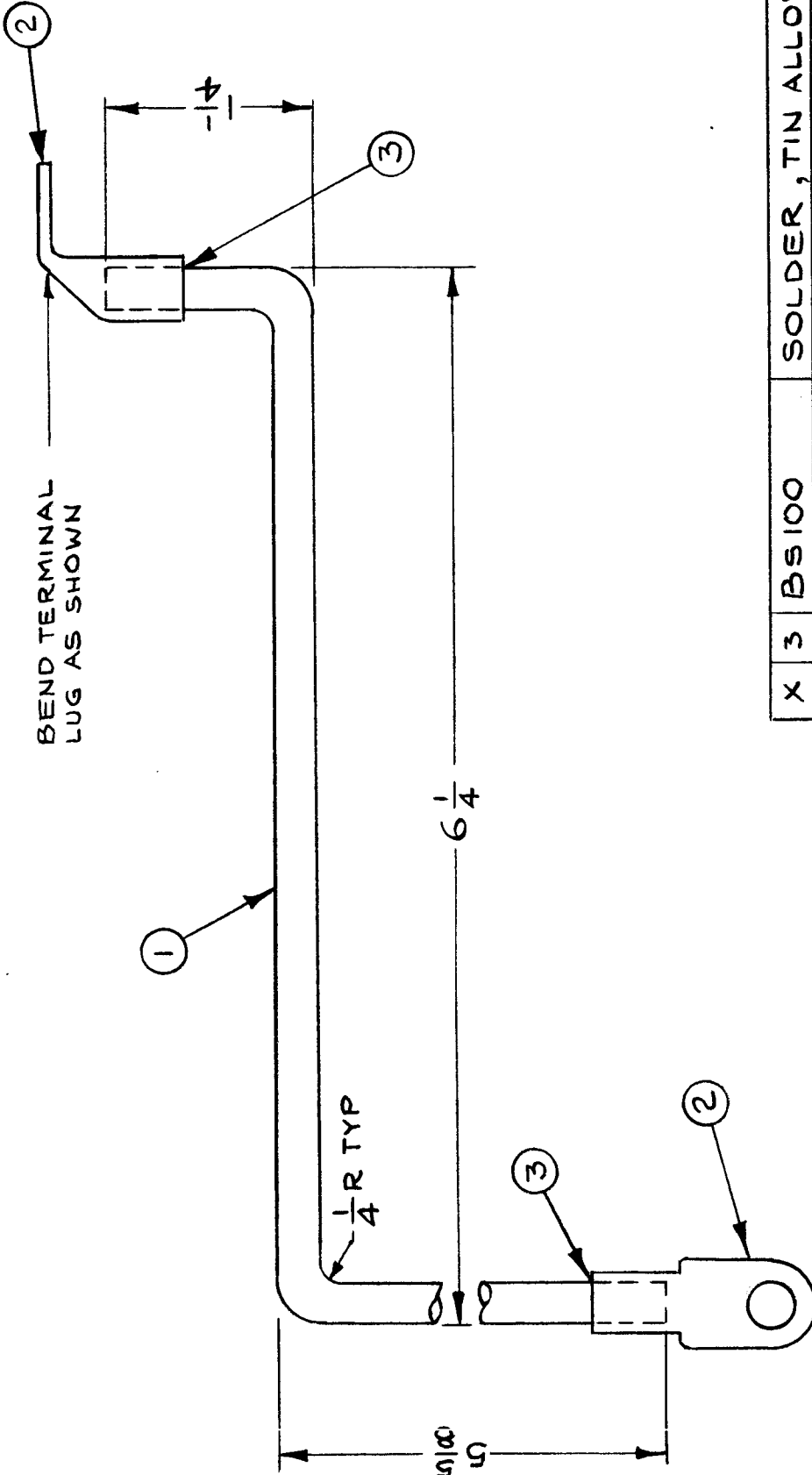
ASSY. NO.  
A2358  
A1587

DATE  
12.11.1964

CA954

Ø

BEND TERMINAL LUG AS SHOWN



X 3	BS100	SOLDER, TIN ALLOY	SYMBOL
2	TE178-2	TERMINAL, LUG-NO. 1/4	
1	TU100-4	TUBE, COP-SOFT	
REQ. ITEM	PART NO.	F. BUDETTI	DESCRIPTION
		THE TECHNICAL MATERIEL CORP. MAMARONECK, NEW YORK	
	STOCK SIZE	LEAD, ELECTRICAL	
	MATERIAL		
	TYPE & TEMPER	MB	CHECKED
	HEAT TREAT. SPEC.	MB	DRAWN
	S245-SILVER PLATE	<del>MB</del>	FINAL APPROVAL
	S423-IRIDITE	MB	CA954
	FINISH & SPEC. NO.		MECH. DES. APP.
			ELEC. DES. APP.

Ø	ORIGINAL RELEASE FOR PRODUCTION	1.14.65	P.F.				
X	EXPER. RELEASE	12.11.64	X	MB	CHECKER	ENG. APP.	
SYM	DESCRIPTION	DATE	CH. NO.	DRAFTS	CHECKER	ENG. APP.	
	UNLESS OTHERWISE SPECIFIED DIMENSIONS ARE IN INCHES AND INCLUDE CHEMICALLY APPLIED OR PLATED FINISHES	SCALE					
	TOLERANCES	FRACTIONS					
	.X ± .05	± 1/64					
	.XX ± .01	ANGLES,					
	.XXX ± .005	± 0° 30'					
	CODE	A					

# ENGINEERING SKETCH

NOT FOR PRODUCTION

REQ. PER UNIT  
MODEL  
TPC-1

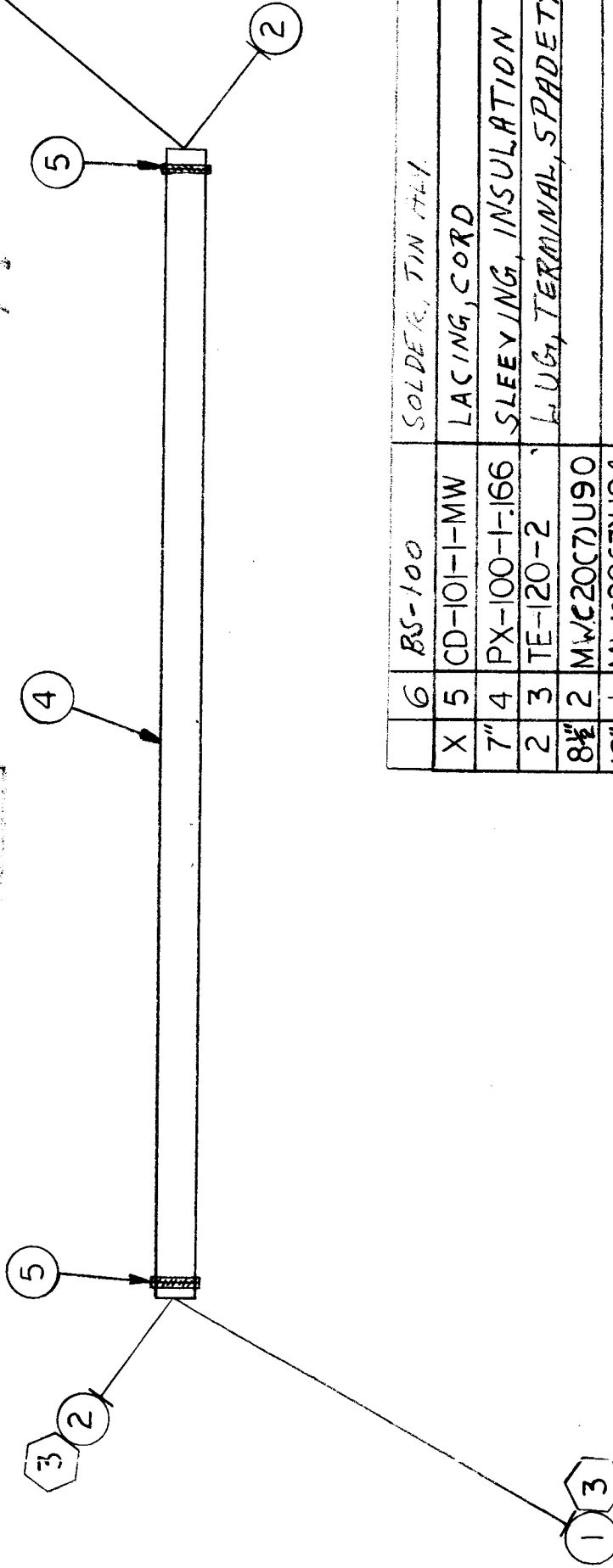
USED ON  
ASSY. NO.  
CA961

DATE

NOT TO BE RELEASED  
WITHOUT PERMISSION

FOR SPARE PARTS USE ONLY  
NOT FOR NEW PRODUCTION

1/11/64  
4/23/65



REQ. ITEM	PART NO.	DESCRIPTION	SYMBOL
6	BS-100	SOLDER, TIN LEAD	
X 5	CD-101-1-MW	LACING, CORD	BLK
7" 4	PX-100-1-166	SLEEVING, INSULATION	BLK
2 3	TE-120-2	LUGS, TERMINAL, SPADE TYPE	
8 1/2" 2	MWC20C7U90		WH/BLK
12" 1	MWC20C7U94		WH/YEL
STOCK SIZE		THE TECHNICAL MATERIEL CORP. MAMARONECK, NEW YORK	
MATERIAL		HARNES, WIRING TO LS-106	
TYPE & TEMPER		DRAWN	
HEAT TREAT. SPEC.		CHECKED	
FINISH & SPEC. NO.		ELEC. DES. APP. MECH. DES. APP.	
		CA-961	

SYM	DESCRIPTION	DATE	CH. NO.	DRAFTS	CHECKER	ENG. APP.
	ORIGINAL RELEASE	12/16				
UNLESS OTHERWISE SPECIFIED		SCALE				
DIMENSIONS ARE IN INCHES AND INCLUDE						
CHEMICALLY APPLIED OR PLATED FINISHES						
TOLERANCES		CODE				
DECIMALS		FRACTIONS				
.X ± .05		± 1/64				
.XX ± .01		ANGLES				
.XXX ± .005		± 0° 30'				

# ENGINEERING SKETCH

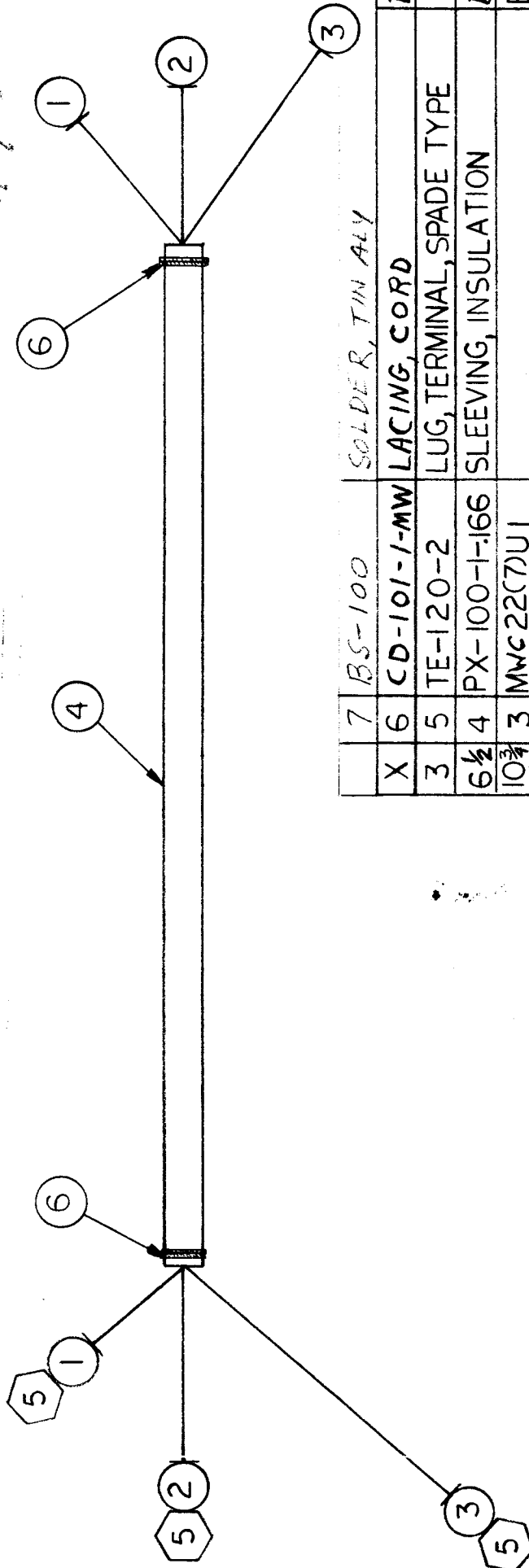
NOT FOR PRODUCTION

REQ. PER UNIT: 1  
 MODEL: TPC-11  
 USED ON: \_\_\_\_\_  
 ASSY. NO.: \_\_\_\_\_  
 DATE: \_\_\_\_\_

CA 962

FOR SPARE PARTS USE  
 NOT FOR NEW PRODUCTION

*MHW*  
*4/27/65*



REQ. ITEM	PART NO.	DESCRIPTION	SYMBOL
7	BS-100	SOLDER, TIN ALY	
X 6	CD-101-1-MW	LACING, CORD	BLK
3 5	TE-120-2	LUG, TERMINAL, SPADE TYPE	
6 1/2 4	PX-100-1-166	SLEEVING, INSULATION	BLK
10 3/4 3	MWC 22(7)U1		BRN
8 3/4 2	5		GRN
8 3/4 1	MWC 22(7)U2		RED

TYPE & TEMPER	HEAT TREAT. SPEC.	DRAWN	CHECKED	FINAL APPROVAL
				<i>[Signature]</i>

SYMBOL	DESCRIPTION	SCALE	DATE	CH. NO.	DRAFTS	CHECKER	ENG. APP.
X	ORIGINAL RELEASE		7/18/66				<i>[Signature]</i>

STOCK SIZE	MATERIAL	FINISH & SPEC. NO.

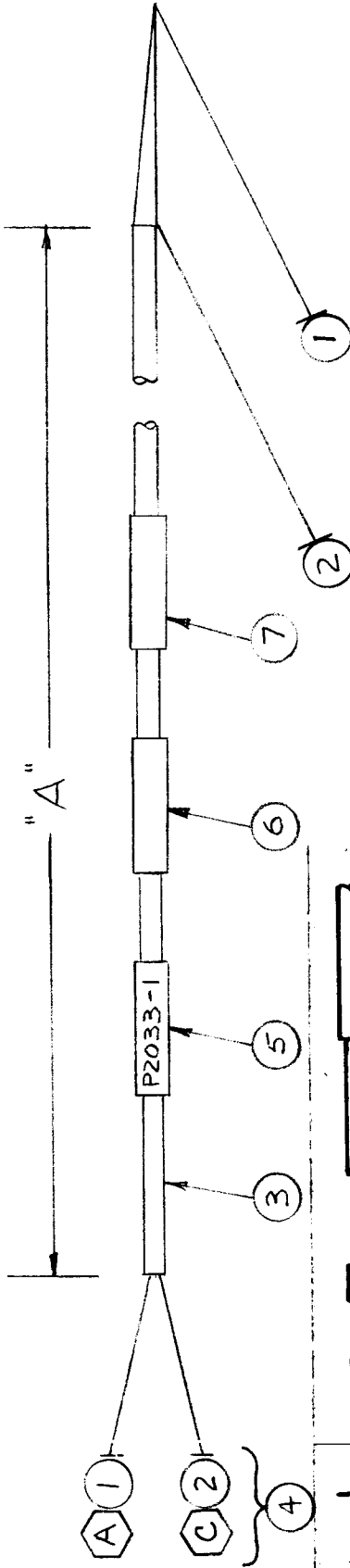
  

THE TECHNICAL MATERIEL CORP.	MAMARONECK.	NEW YORK
HARNES, WIRING TO RV-107-L-4		

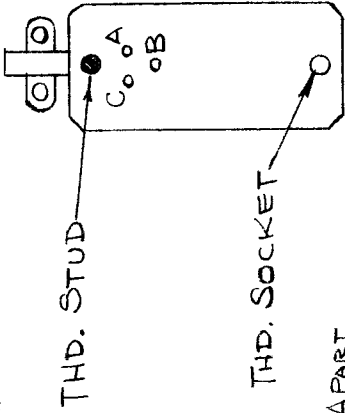
FINISH & SPEC. NO.	ELEC. DES. APP.	MECH. DES. APP.
CA-962		

TMC PART NO.	"A"	ITEM NO. 6	ITEM NO. 7	USED ON
CA 974	181"	LA107-12-BTIA1 UNIT #1	LA107-12-CA974	ASSY. NO.
CA974-2	65"	LA107-12-RTID-1	LA107-12-CA974-2	DATE
				11-18-64
				MODEL
				CO PA-2
				CA 977
				REQ. PER UNIT
				1
				CA 974
				B



NOTE \* USE ITEM 11 FOR PINS A, C ON ITEM 4.  
+ CUT AS REQ.

THIS SYMBOL DENOTES END OF INSULATION AND NAIL DRIVING POINT. WIRE MUST BE STRIPPED 3/4" BEYOND THIS POINT AND TINNED 1/2" UNLESS OTHERWISE SPECIFIED.



DETAIL - ITEM 4

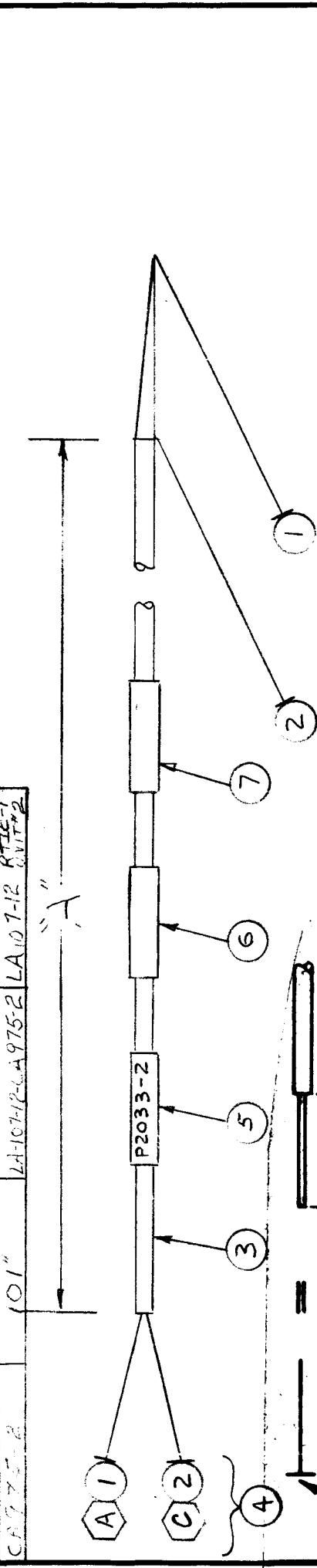
- 1- ALL RF CABLES
  - 2- ALL SHIELDED CABLES
  - 3- ALL OTHERS
- SPACE LACING APPROX. 3/4" PART

REQ. ITEM	* PART NO.	DESCRIPTION	SYMBOL
X 11	PX830-16-1	INSULATION, SLEEVING, ELECT.	
X 10	TA100-1	INS. TAPE, EL PLST	
X 9	CD101-1MW	CORD, NYLON, LACING	
X 8	BS100	SOLDER, TIN ALLOY	
1	SEE CHART	SLVG, MARKER, CABLE	
1	SEE CHART	SLVG, MARKER, CABLE	
1	LA107-12-P2033-1	SLVG, MARKER, CABLE	
1	PL247-1P	CONN., PLUG, MALE - 11/C	
+	PX100-1-166	INSULATION, SLVG, SIZE 6	
+	MWC24(7)V6	WIRE, ELEC, INSULATION	
+	MWC24(7)V4	WIRE, ELEC, INSULATION	
		STOCK SIZE	
		MATERIAL	
		TYPE & TEMPER	
		HEAT TREAT. SPEC.	
		FINISH & SPEC. NO.	
		MECH. DES. APP.	
		ELEC. DES. APP.	
		CHECKED	
		BRAWN	
		M.H.S.	
		QC'S	
		RTIA-1 UNIT #1 TO FILTER ASSY	
		CABLE ASSY, SP	
		THE TECHNICAL MATERIEL CORP.	
		MAMARONECK.	
		NEW YORK	
		FINAL APPROVAL	
		CA 974	
		B	

SYM	DESCRIPTION	DATE	CH. NO.	DRAFTS	CHECKER	ENG. APP.
B	ADDED PART NO. CHART	3.14.66	15946	HLA	HLA	
A	75 WAS - 122' 206 WAS - 1229	7.27.65	24465	HLA	HLA	
Ø	ORIGINAL RELEASE FOR PRODUCTION	2.17.65				
X1	ITEM 4 DETAIL ADDED DASH					
	NO'S ADDED TO ITEMS 5, 6, 7.					
UNLESS OTHERWISE SPECIFIED		SCALE				
DIMENSIONS ARE IN INCHES AND INCLUDE		CHEMICALLY APPLIED OR PLATED FINISHES				
DECIMALS		FRACTIONS				
.XX ± .01		± 1/64				
.XXX ± .005		ANGLES,				
		± 0° 30'				

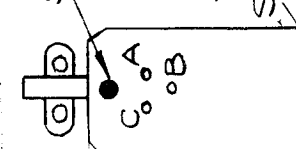


TMC P/N	"A"	ITEM # 7	ITEM # 6	REQ. PER UNIT	MODEL	USED ON ASSY. NO.	DATE
CA975	70"	LA107-12	LA107-12	1	COPA-2	CA977	11-18-64
CA975-B	101"	LA107-12	LA107-12				



NOTE \* USE ITEM 11 FOR PINS A, C, ON ITEM 4

THIS SYMBOL DENOTES END OF INSULATION AND NAIL DRIVING POINT. WIRE MUST BE STRIPPED 3/4" BEYOND THIS POINT AND TINNED 1/2" UNLESS OTHERWISE SPECIFIED.



Wires should be placed in cable in numerical sequence as they appear in item column by category.

1- ALL REFCABLES  
 2- ALL SHIELDED CABLES  
 3- ALL OTHERS

X 11	PX030-16-1	INSULATION, SLEEVING ELECT.
X 10	TA100-1	INSULATION TAPE, EL PLST
X 9	CD101-1MW	CORD, NYLON, LACING
X 8	BS100	SOLDER, TIN ALY
1	SEE CHART	SLEEVING, MARKER, CABLE
1	SEE CHART	SLEEVING, MARKER, CABLE
1	P2033-2	SLEEVING, MARKER, CABLE
1	FL247-1P	CONNECTOR, PLUG, MALE-11/C
	PX100-1-166	INSULATION, SLEEVING, SIZE G
	MWC24(7)U96	WIRE, ELEC. INSULATION
	MWC24(7)U94	WIRE, ELEC. INSULATION

REQ. ITEM	PART NO.	DESCRIPTION	SYMBOL
		THE TECHNICAL MATERIEL CORP. MAMARONECK. NEW YORK	
		CABLE ASSEMBLY, SP	
TYPE & TEMPER	HEAT TREAT. SPEC.	DRAWN	CHECKED
		MHS	9078
FINISH & SPEC. NO.		ELEC. DES. APP.	MECH. DES. APP.
		2-26-65	CA975
			A

DETAIL - ITEM 4

IT. 6, 7 ADDED TO CHART, IT 5 WAS LA107-12. 1222, LACING NOTE DELETED. IT 1, 2, 3 LENGTHS ADDED TO CHART	6-25-65	1A341	DVA	JCP	JCC
ORIGINAL RELEASE FOR PRODUCTION	2-24-65		HLA	M	
ITEM 4 DE TAIL ADDED. DASH NOS ADDED TO ITEMS 5, 6, 7	2-17-65		HLA	M	
PIN C WAS B					

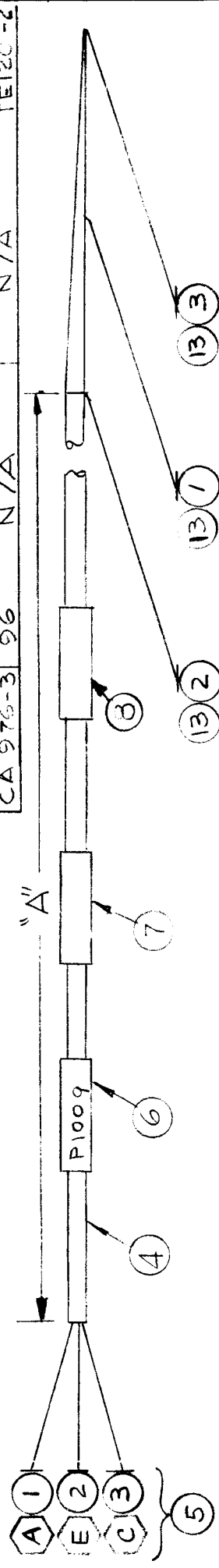
REQ. PER UNIT	1	MODEL	COPA-2	ASSY. NO.	CA 977	DATE	11-18-64
	1		ARCD-1				6-25-65

CA976 B

NOTE \* USE ITEM 12 FOR PINS A, C, E ON ITEM 5.

TMC P/No	A	ITEM 7	ITEM 8	ITEM 13
CA 976	185	LA107-12-RTPA-1	LA107-12-CA976	N/A
CA 976-2	96	LA107-12-RTPE-1	LA107-12-CA976-2	N/A
CA 976-3	96	N/A	N/A	TE12C-2

THIS SYMBOL DENOTES END OF INSULATION AND NAIL DRIVING POINT. WIRE MUST BE STRIPPED 3/4" BEYOND THIS POINT AND TINNED 1/2" UNLESS OTHERWISE SPECIFIED.



USE AS APPLIES

- 1. WIRES SHOULD BE PLACED IN CABLE IN NUMERICAL SEQUENCE AS THEY APPEAR IN ITEM COLUMN BY CATEGORY. 1. ALL RF CABLES.
- 2. ALL SHIELDED CABLES.
- 3. ALL OTHERS.

3	13	SEE CHART	TERMINAL LUG-SPADE
X	12	PX830-16-1	INSULATION, SLEEVING ELECT.
X	11	TA100-1	INSULATION TAPE, EL PLST
X	10	CD101-1MW	CORD, NYLON, LACING
X	9	BS100	SOLDER, TIN ALLOY
1	8	SEE CHART	SLEEVING, MARKER, CABLE
1	7	SEE CHART	SLEEVING, MARKER, CABLE
1	6	P1009	SLEEVING, MARKER, CABLE
1	5	PL247-1P	CONN., PLUG, MALE - 11/C
	4	PX100-1-166	INSULATION, SLEEVING-SIZE G
	3	MWC24(7)U3	WIRE, ELEC., INSULATION
	2	MWC24(7)U2	WIRE, ELEC., INSULATION
	1	MWC24(7)U1	WIRE, ELEC., INSULATION

B	ITEM 13 ADDED-CHART CLARIFIED	4-19-66	16112	G.D.L	QRB	QRB		
A	IT 7, 8 ADDED TO CHART. IT 6 WAS LA107-12-1228. LACING NOTE DELETED. CA976-2 ADDED LENGTH TO CHART	6-25-65	A341	D.V.V	QRB	QRB		
Ø	ORIGINAL RELEASE FOR PRODUCTION	20-4-65		H.A	AM			
X1	ITEM 5 DETAIL ADDED DASH NB'S ADDED TO ITEMS 6, 7, 8.	2-17-65		H.A				
SYM	DESCRIPTION	DATE	CH. NO.	DRAFTS	CHECKER	ENG. APP.	SCALE	
	UNLESS OTHERWISE SPECIFIED DIMENSIONS ARE IN INCHES AND INCLUDE CHEMICALLY APPLIED OR PLATED FINISHES							
	TOLERANCES						CODE	
	FRACTIONS ± 1/64 ANGLES ± 0° 30'							
	DECIMALS ± .01 ± .005							
	TYPE & TEMPER	HEAT TREAT. SPEC	MATERIAL		FINISH & SPEC. NO.		ELEC. DES. APP. MECH. DES. APP.	
			CABLE ASSY, SP		M.H.S. QRB		ELEC. DES. APP. MECH. DES. APP.	
			THE TECHNICAL MATERIEL CORP. MAMARONECK. NEW YORK		DRAWN QRB		ELEC. DES. APP. MECH. DES. APP.	
					CHECKED KAC		ELEC. DES. APP. MECH. DES. APP.	
					FINAL APPROVAL		ELEC. DES. APP. MECH. DES. APP.	
					CA 976		ELEC. DES. APP. MECH. DES. APP.	
					B		ELEC. DES. APP. MECH. DES. APP.	

REQ. PER UNIT	MODEL	USED ON	DATE
	RAK-55	ASSY. NO.	9-30-65

CA 984

THIS DRAWING NUMBER  
 HAS BEEN DECLARED VOID  
 & IS NOT REQUIRED FOR RAK-55  
 Ref: M. STORMER  
 9/30/65

REQ. ITEM	PART NO.	DESCRIPTION	SYMBOL
		THE TECHNICAL MATERIEL CORP. MAMARONECK. NEW YORK	
	STOCK SIZE		
	MATERIAL	CABLE ASSY, SPECIAL PURPOSE	
	TYPE & TEMPER	DRAWN	CHECKED
	HEAT TREAT. SPEC.		
	FINISH & SPEC. NO.		ELEC. DES. APP. MECH. DES. APP.
			CA 984

NO LONGER REQ. 7/30/65

UNLESS OTHERWISE SPECIFIED  
 DIMENSIONS ARE IN INCHES AND INCLUDE  
 CHEMICALLY APPLIED OR PLATED FINISHES

DECIMALS  
 .X ± .05  
 .XX ± .01  
 .XXX ± .005

FRACTIONS  
 ± 1/64  
 ANGLES  
 ± 0° 30'

SCALE

CODE

DATE 7/30/65

CH. NO.

DRAFTS

CHECKER

ENG. APP.

REQ. PER UNIT	MODEL	USED ON	DATE
	RAK-55	ASSY. NO.	9-30-65
			CA 985

THIS DRAWING NUMBER  
 HAS BEEN DECLARED VOID  
 & IS NOT REQUIRED FOR RAK-55

Ref: M. STURMER  
 9/30/65

REQ. ITEM	PART NO.	DESCRIPTION	SYMBOL
		THE TECHNICAL MATERIEL CORP. MAMARONECK. NEW YORK	
	STOCK SIZE		
	MATERIAL	CABLE ASSY, S/P	
	TYPE & TEMPER	DRAWN	CHECKED
	HEAT TREAT. SPEC.		FINAL APPROVAL
	FINISH & SPEC. NO.		CA 985
	ELEC. DES. APP.	MECH. DES. APP.	

NO LONGER REQ. 9/30/65

UNLESS OTHERWISE SPECIFIED  
 DIMENSIONS ARE IN INCHES AND INCLUDE  
 CHEMICALLY APPLIED OR PLATED FINISHES

DECIMALS  
 .X ± .05  
 .XX ± .01  
 .XXX ± .005

FRACTIONS  
 ± 1/64  
 ANGLES  
 ± 0° 30'

TOLERANCES

SCALE

DATE

CH. NO.

DRAFTS

CHECKER

ENG. APP.

CODE

REQ. PER UNIT	MODEL	USED ON	DATE
	RAK-55	ASSY. NO.	
		CA 986	

THIS DRAWING NUMBER HAS BEEN DECLARED VOID & IS NOT REQUIRED FOR RAK55

9/30/65 REF: M. STURMER

REQ. ITEM	PART NO.	STURMER	DESCRIPTION	SYMBOL
			THE TECHNICAL MATERIEL CORP. MAMARONECK. NEW YORK	
	STOCK SIZE		CABLE ASSY, AF	
	MATERIAL			
	TYPE & TEMPER	DRAWN	CHECKED	
	HEAT TREAT. SPEC.			
	FINISH & SPEC. NO.			CA 986
	ELEC. DES. APP.			
	MECH. DES. APP.			

NO LONGER REQ. 9/30/65

UNLESS OTHERWISE SPECIFIED DIMENSIONS ARE IN INCHES AND INCLUDE CHEMICALLY APPLIED OR PLATED FINISHES

DECIMALS: .X ± .05, .XX ± .01, .XXX ± .005

FRACTIONS: ± 1/64, ANGLES: ± 0° 30'

SCALE: \_\_\_\_\_

CODE: \_\_\_\_\_

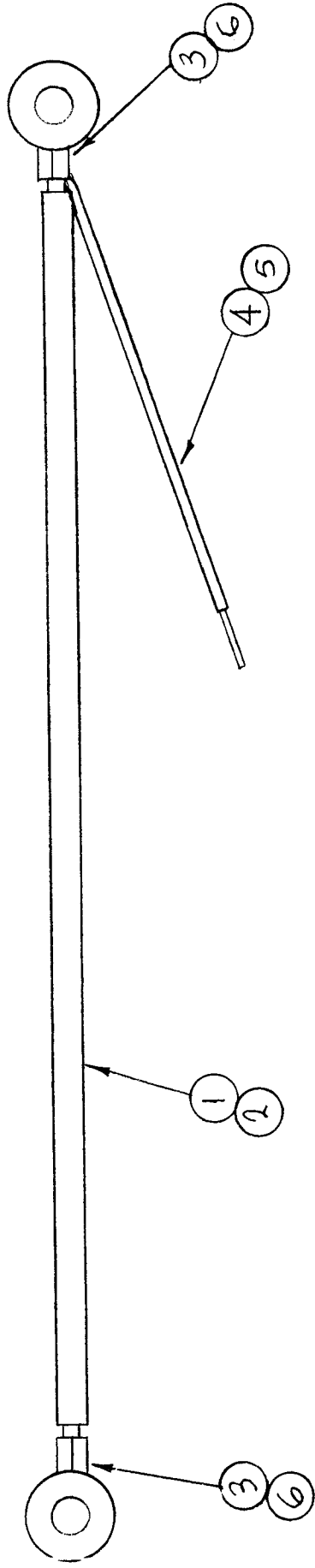
REQ. PER UNIT	MODEL	USED ON	DATE
	TRAK-55	ASBY. NO.	
		CA 987	Ø

THIS DRAWING NUMBER HAS BEEN  
 DECLARED VOID & IS NOT REQUIRED  
 FOR TRAK-55  
 9/30/65  
 Ref: M. STURMER

REQ. ITEM	PART NO.	DESCRIPTION	SYMBOL
		THE TECHNICAL MATERIEL CORP. MAMARONECK. NEW YORK	
	STOCK SIZE	WIRING HARNESS, BRANCHED	
	MATERIAL		
	TYPE & TEMPER	DRAWN	
	HEAT TREAT. SPEC.	CHECKED	
	FINISH & SPEC. NO.	ELEC. DES. APP. MECH. DES. APP.	
	DATE	CH. NO.	DATE
	9/30/65		
	DESCRIPTION	CHECKER	ENG. APP.
	NO LONGER REQ		
UNLESS OTHERWISE SPECIFIED DIMENSIONS ARE IN INCHES AND INCLUDE CHEMICALLY APPLIED OR PLATED FINISHES			
DECIMALS .X ± .05 .XX ± .01 .XXX ± .005			
TOLERANCES FRACTIONS ± 1/64 ANGLES ± 0° 30'			
SCALE CODE			
FINAL APPROVAL <i>[Signature]</i> CA 987 Ø			

REQ. PER UNIT	USED ON	MODEL	ASSY. NO.	DATE
1		GPT-10KLF	AX569	2-28-66

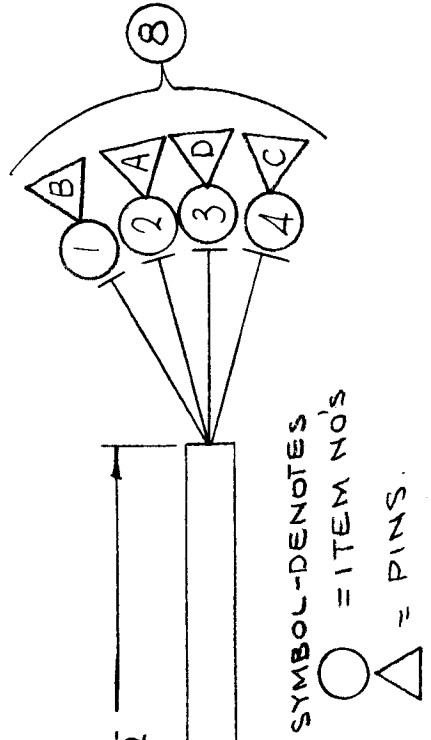
CA993	Ø
-------	---



REQ. ITEM	PART NO.	DESCRIPTION	SYMBOL
X 6	BS100	SOLDER, TIN ALLOY	
X 5	PX 370-16-7-25	INS. SLVG ELECT.	
X 4	WL100-6	WIRE, ELECT. BUSS	
2 3	TE141-4	TERM LUG, 1/4-20	
X 2	PX 370-12-7-75	INS. SLVG ELECT	
X 1	WL100-2	WIRE, ELECT, BUSS	
		F. BUDETTI	
		THE TECHNICAL MATERIEL CORP. MAMARONECK. NEW YORK	
		CABLE, INTERCONNECT	
		SWR COUPLER	
		<i>[Signature]</i>	<i>[Signature]</i>
		DRAWN	CHECKED
		HEAT TREAT. SPEC.	FINAL APPROVAL
		FINISH & SPEC. NO.	MECH. DES. APP.
			CA993
			Ø

ORIGINAL RELEASE FOR PRODUCTION	DATE	CH. NO.	DRAFTS	CHECKER	ENG. APP.
3-1-66	A	Jc	Jc	Jc	HDe
DESCRIPTION	SCALE				
UNLESS OTHERWISE SPECIFIED DIMENSIONS ARE IN INCHES AND INCLUDE CHEMICALLY APPLIED OR PLATED FINISHES	1:1				
TOLERANCES	CODE				
.X ± .05 .XX ± .01 .XXX ± .005	A				
FRACTIONS ± 1/64 ANGLES ± 0° 30'					

REC. PER UNIT	1
MODEL	GPT-10KLF
ASBY. NO.	AX534
DATE	3-3-66
USED ON	CA999

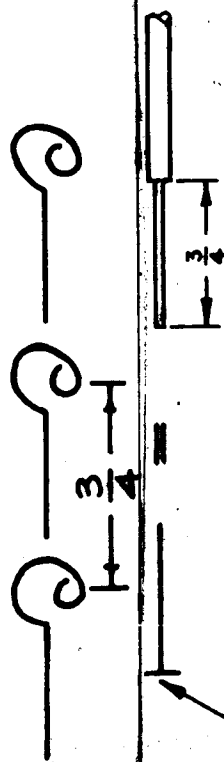


SYMBOL-DENOTES  
 ○ = ITEM NO'S  
 △ = PINS

UNLESS OTHERWISE SPECIFIED  
 WIRES SHOULD BE PLACED IN CABLE IN NUMERICAL SEQUENCE  
 AS THEY APPEAR IN ITEM COLUMN BY CATEGORY.

1. ALL R.F. CABLES
2. ALL SHIELDED CABLES
3. ALL OTHERS

SPACE LACING APPROXIMATELY 3/4" APART.



THIS SYMBOL DENOTES END OF INSULATION  
 AND NAIL DRIVING POINT. WIRE MUST BE  
 STRIPPED 3/4" BEYOND THIS POINT AND  
 TINNED 1/2" UNLESS OTHERWISE SPECIFIED.

REQ. ITEM	PART NO.	DESCRIPTION	SYMBOL
2	12	MS3057-6	CLP,CBL,EI,CONN.
2	11	MS3420-6A	BUSHING,RUBBER
X	10	PX100-1-129	INS. SLVG.,ELECT
X	9	BS100	SOLDER,TIN ALLOY
1	8	MS3102A14S-2S	CONN.RECP.FML
1	7	MS3106A14S-2P	CONN.PL.ML
X	6	CD101-1MW	CORD,NYLON,LACING
X	5	PX100-1-263	INS. SLVG.ELECT.
	4	MWC22(7)U3	WIRE,ELECT.INS.
	3	U4	
	2	U9	
	1	MWC22(7)U2	WIRE,ELECT.INS.

THE TECHNICAL MATERIEL CORP. MAMARONECK. NEW YORK	FINAL APPROVAL CA999
CABLE, JUMPER AUX FRAME	
STOCK SIZE	
MATERIAL	
TYPE & TEMPER	HEAT TREAT. SPEC.
FINISH & SPEC. NO.	

SYM	DESCRIPTION	DATE	CH. NO.	DRAFTS	CHECKER	ENG. APP.
Ø	ORIGINAL RELEASE FOR PRODUCTION	3-7-66			Je	[Signature]
UNLESS OTHERWISE SPECIFIED		SCALE		1:1		
DIMENSIONS ARE IN INCHES AND INCLUDE						
CHEMICALLY APPLIED OR PLATED FINISHES						
TOLERANCES		FRACTIONS		CODE		
.X ± .05		± 1/64		A		
.XX ± .01		ANGLES				
.XXX ± .005		± 0° 30'				