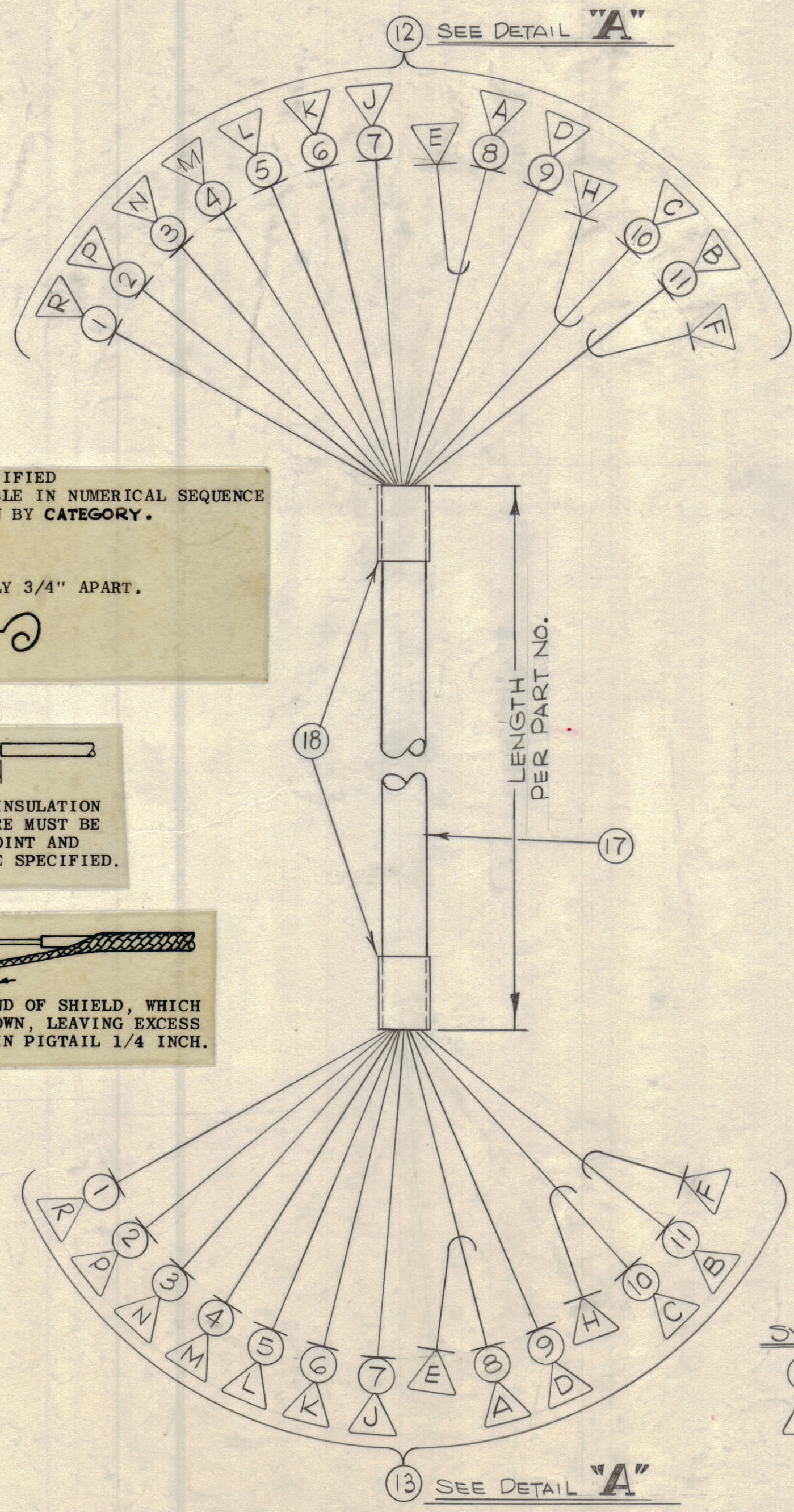


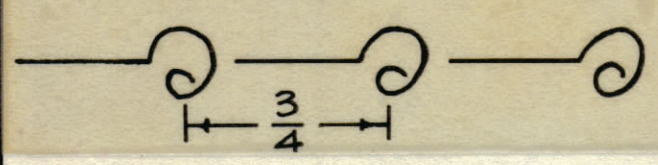
REVISIONS							
ZONE	SYM	DESCRIPTION	DATE	E.M.N. NO.	DRAFT	CHKD	APPD
X	1	ADD. PT. No. NOTE: ON IT. 17 ADD. 375" 1518 "BA"	11/165	X	HCA		
		ORIGINAL RELEASE FOR PRODUCTION	11/17/65		HVV		



UNLESS OTHERWISE SPECIFIED WIRES SHOULD BE PLACED IN CABLE IN NUMERICAL SEQUENCE AS THEY APPEAR IN ITEM COLUMN BY CATEGORY.

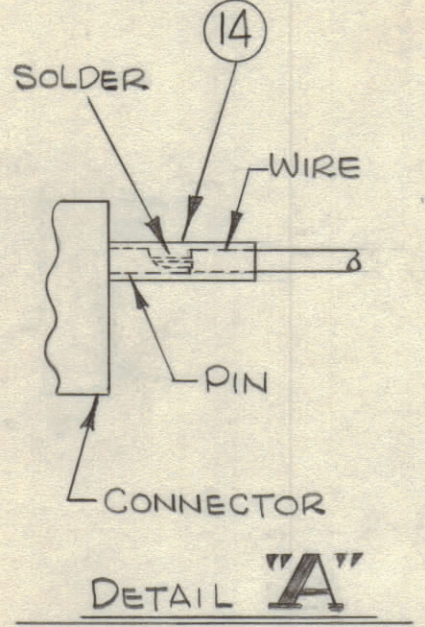
1. ALL R.F. CABLES
2. ALL SHIELDED CABLES
3. ALL OTHERS

SPACE LACING APPROXIMATELY 3/4" APART.



THIS SYMBOL DENOTES END OF INSULATION AND NAIL DRIVING POINT. WIRE MUST BE STRIPPED 3/4" BEYOND THIS POINT AND TINNED 1/2" UNLESS OTHERWISE SPECIFIED.

THE ABOVE SYMBOL DENOTES END OF SHIELD, WHICH SHOULD BE TERMINATED AS SHOWN, LEAVING EXCESS SHIELDING AS A PIGTAIL. TIN PIGTAIL 1/4 INCH.



TMC PART NO. TO BE IN FOLLOWING FORM:

CA982 - 100  
 BASIC PT. NO.      LENGTH IN FEET

NOTE: DIMENSION NOT TO EXCEED 100 FT. IN LENGTH.

CA982

REQ'D.	ITEM	PART NUMBER	DESCRIPTION	SYMBOL
2	18	MS3420-8A	BUSHING, RUBBER	
X	17	PX100-1-375	INS, SLEEVING	
X	16	BS100	SOLDER, TIN, ALLOY	
X	15	CD101-1MW	CORD, NYLON, LACING	
X	14	PX830-18-1	INS. SLEEVING	
1	13	PL212-1	CONNECTOR, PLUG - MALE	
1	12	PL248-2	CONNECTOR, PLUG - FEMALE	
	11	MWC20(7)SJ9	CABLE, SP, SHLD/JKT	
	10	↑ SJ4	CABLE, SP, SHLD/JKT	
	9	↑ U0	WIRE, ELEC, INSULATED	
	8	↑ SJ5	CABLE, SP, SHLD/JKT	
	7	MWC20(7)U91	WIRE, ELEC, INSULATED	
	6	MWC18(16)U90	↑	
	5	↑ U95	↑	
	4	↑ U96	↑	
	3	↑ U98	↑	
	2	↑ U9	↑	
1	1	MWC18(16)U7	WIRE, ELEC, INSULATED	

SYMBOL DENOTES  
 ○ = ITEM NOS.  
 △ = PIN NOS.

POSE LIST OF MATERIAL

MATERIAL	THE TECHNICAL MATERIEL CORP. MAMARONECK, NEW YORK			
FINISH	TITLE CABLE, INTERCONNECT			
Q'TY./UNIT	TPCA-1	ASS'Y. NO.	DRAWN	DATE
SCALE	1:1	CODE	H. AUSTIN	9-23-65
THE CONTENTS OF THIS DRAWING ARE THE EXCLUSIVE PROPERTY OF THE TECHNICAL MATERIEL CORP. ITS UNAUTHORIZED USE OR REPRODUCTION IN WHOLE OR IN PART IS STRICTLY FORBIDDEN.		DECIMALS	ELECT. DES.	DATE
		.XX ± .01	A. D. ...	11/17/65
		.XXX ± .005	MECH. DES.	DATE
		TOLERANCES		CA982
		FRACTIONS ± 1/64		REV. LTR.
		ANGLES ± 0° 30'		

NOTES