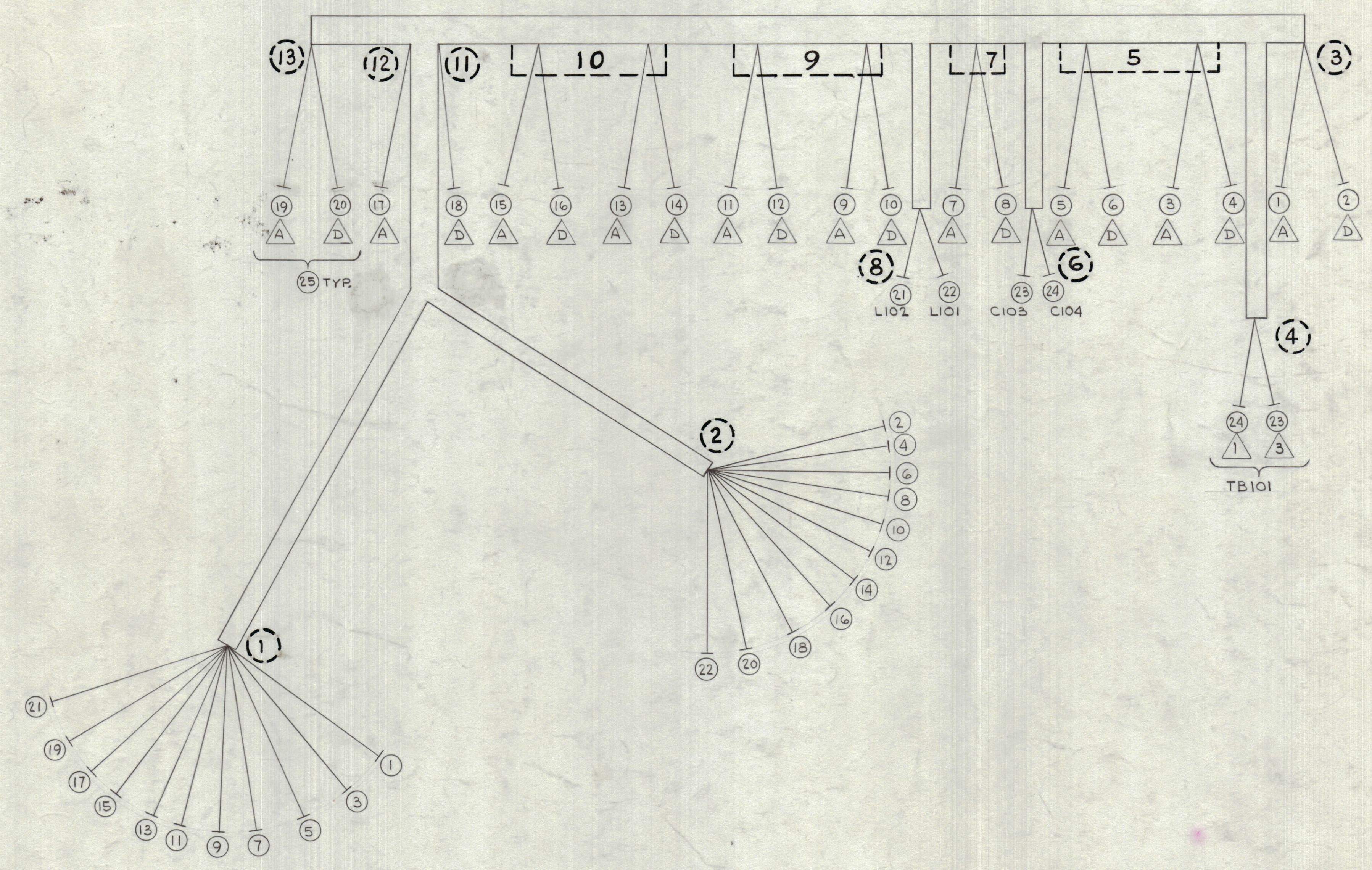
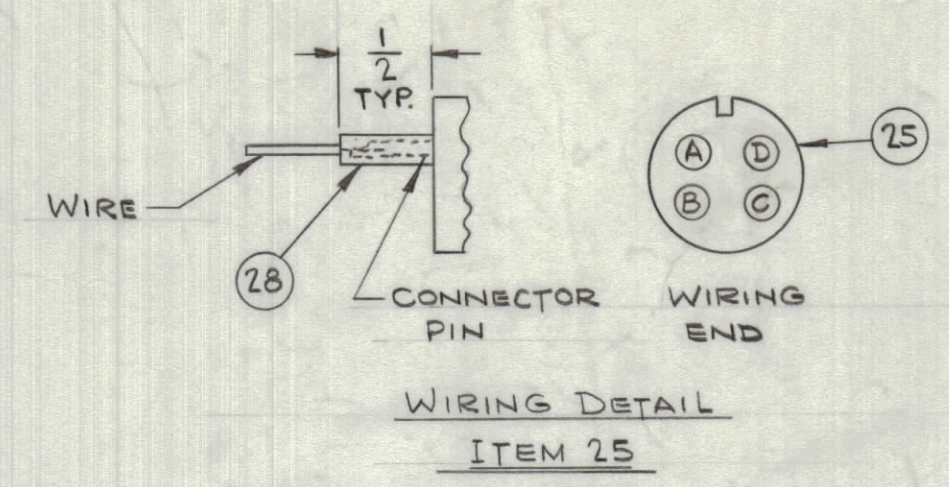


| REVISIONS | | | | | | |
|-----------|-----|---------------------------------|---------|------------|-------|------|
| ZONE | SYM | DESCRIPTION | DATE | E.M.N. NO. | DRAFT | CHKD |
| X | | EXPERIMENTAL RELEASE | 2-9-65 | | HLA | |
| | | ORIGINAL RELEASE FOR PRODUCTION | 2-11-65 | | HLA | |



SYMBOL NOTES:
 ○ DENOTES ITEM NO.
 ▽ DENOTES PIN NO.
 ○ DENOTES BREAKOUTS

WIRES SHOULD BE PLACED IN CABLE IN NUMERICAL SEQUENCE AS THEY APPEAR IN ITEM COLUMN BY CATEGORY-
 1. ALL RF CABLES 2. ALL SHIELDED CABLES 3. ALL OTHERS.

THIS SYMBOL DENOTES END OF INSULATION AND NAIL DRIVING POINT. WIRE MUST BE STRIPPED 3/4" BEYOND THIS POINT AND TINNED 1/2" UNLESS OTHERWISE SPECIFIED.

| FROM | TO | REQ'D. | ITEM | PART NUMBER | DESCRIPTION | SYMBOL |
|------|----|--------|------|---------------|--------------------------|--------|
| | 10 | 28 | | PX-830-22-1 | INS. SLEEVING, SHRINK | |
| | X | 27 | | PCD-101-1-MW | CORD, NYLON, LACING | |
| | X | 26 | | BS 100 | SOLDER, TIN | |
| | 10 | 25 | | MSB102A14S-2P | CONN., RECP., MALE ALLOY | |
| 6 | 4 | | 24 | MWC22(7)U-2 | WIRE, ELEC., INS. | |
| 6 | 4 | | 23 | | | |
| 8 | 2 | | 22 | | | |
| 8 | 1 | | 21 | | | |
| 13 | 2 | | 20 | | | |
| 13 | 1 | | 19 | | | |
| 11 | 2 | | 18 | | | |
| 12 | 1 | | 17 | | | |
| 10 | 2 | | 16 | | | |
| 10 | 1 | | 15 | | | |
| 10 | 2 | | 14 | | | |
| 10 | 1 | | 13 | | | |
| 9 | 2 | | 12 | | -PINK | |
| 9 | 1 | | 11 | | -92 | |
| 9 | 2 | | 10 | | -91 | |
| 9 | 1 | | 9 | | -93 | |
| 7 | 2 | | 8 | | -94 | |
| 7 | 1 | | 7 | | -95 | |
| 5 | 2 | | 6 | | -96 | |
| 5 | 1 | | 5 | | -97 | |
| 5 | 2 | | 4 | | -98 | |
| 5 | 1 | | 3 | | -90 | |
| 3 | 2 | | 2 | | -92 | |
| 3 | 1 | | 1 | MWC22(7)U-91 | WIRE, ELEC., INS. | |

| LIST OF MATERIAL | | | | | | |
|---|--|---|--|------------------------------|--|--|
| MATERIAL | | THE TECHNICAL MATERIEL CORP. MAMARONECK, NEW YORK | | | | |
| FINISH | | TITLE WIRING HARNESS, BRANCHED | | | | |
| SCALE 1:1 | | MODEL USED ON SWR-10K-RM | | ASSY. NO. | | |
| THE CONTENTS OF THIS DRAWING ARE THE EXCLUSIVE PROPERTY OF THE TECHNICAL MATERIEL CORP. ITS UNAUTHORIZED USE OR REPRODUCTION IN WHOLE OR IN PART IS STRICTLY FORBIDDEN. | | UNLESS OTHERWISE SPECIFIED DIMENSIONS ARE IN INCHES AND INCLUDE CHEMICALLY APPLIED OR PLATED FINISHES | | DRAWN BY AUSTIN DATE 12-9-65 | | |
| DECIMALS ±.05 ANGLES ±.005 | | TOLERANCES ±.1/64 | | ELECT. DES. DATE 2/11/65 | | |
| FRACTIONS ±.1/64 ANGLES ±.0° 30' | | MECH. DES. | | DATE 2/11/65 | | |
| NOTES | | SHEET | | REV. LTR. | | |

CA979