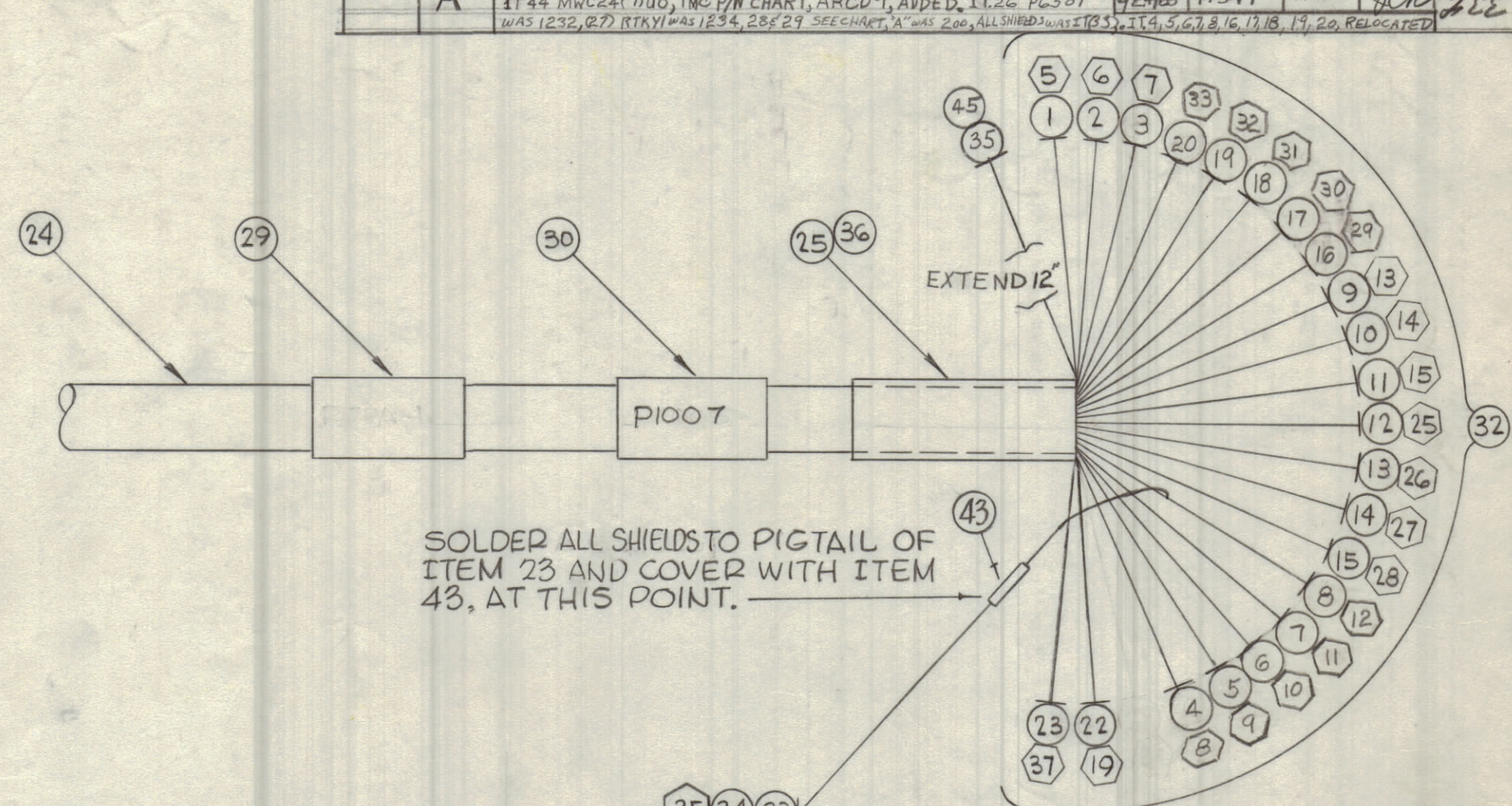
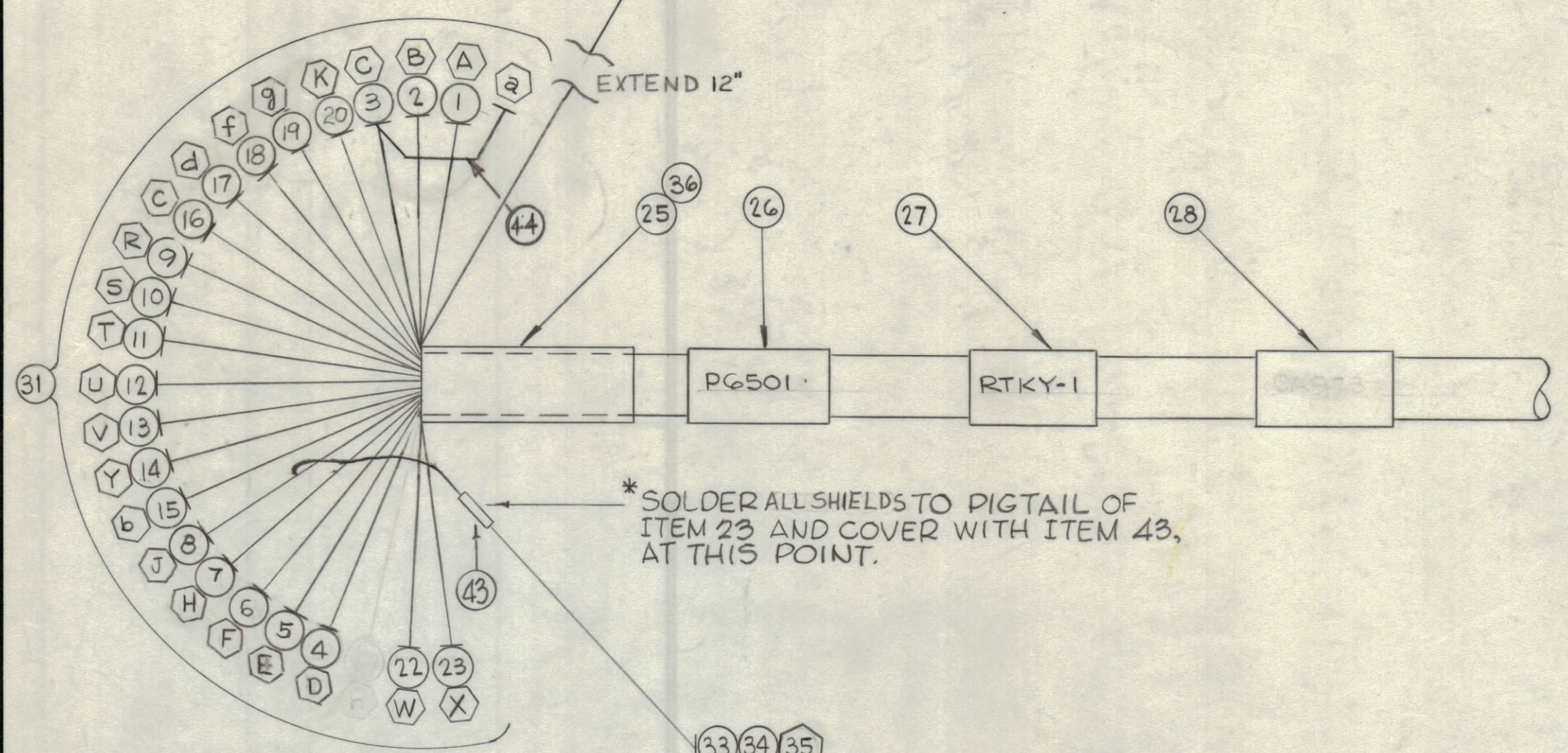


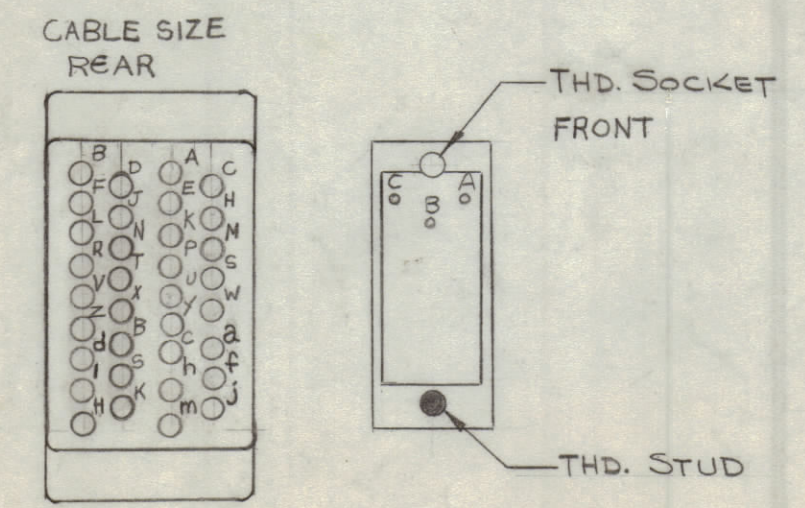
TMC P/N	"A" IN INCHES	ITEM #28	ITEM #29
CA973	200	LA107-15-CA973	LA107-15-RTPA-1
CA973-2	68	LA107-15-CA973-2	LA107-15-RTPE-1

REVISIONS							
ZONE	SYM	DESCRIPTION	DATE	E.M.N. NO.	DRAFT	CHKD	APPD
-	X	EXPERIMENTAL RELEASE	2-23-65		HLA		
-	X <sub>1</sub>	ON B/M IT. 4, 5, 6, 7 WAS WIRE, ELEC., INS. IT. 24 WAS PX100-1-375; ON PICT. ADD. NOTE & DETAIL - IT. 31	2-24-65		HLA		
	Ø	ORIGINAL RELEASE FOR PRODUCTION	2/25/65		HLA		
	A	IT 21, IT 37 Ø 101-MW, LACING NOTE, TITLE BLOCK RTPA-1, RTKY-1, DELETE IT 44 MWC24(7)U0, TMC P/N CHART, ARCD-1, ADDED, IT 26, PG 501 WAS 1232, (27) RTKY WAS 1234, 28 & 29 SEE CHART, "A" WAS 200, ALL SHIELDS WERE 103, 114, 5, 6, 7, 8, 16, 17, 18, 19, 20, RELOCATED	4/24/65	14341	DKV		JEE



**NOTE**

39 USED ON WIRES 22 & 23  
 40 USED ON ALL OTHER WIRES (EXCEPT ITEM 33). **THIS END ONLY**



DETAIL - ITEM 31

THIS SYMBOL DENOTES END OF INSULATION AND NAIL DRIVING POINT. WIRE MUST BE STRIPPED 3/4" BEYOND THIS POINT AND TINNED 1/2" UNLESS OTHERWISE SPECIFIED.

THE ABOVE SYMBOL DENOTES END OF SHIELD, WHICH SHOULD BE TERMINATED AS SHOWN, LEAVING EXCESS SHIELDING AS A PIGTAIL. TIN PIGTAIL 1/4 INCH.

WIRES SHOULD BE PLACED IN CABLE IN NUMERICAL SEQUENCE AS THEY APPEAR IN ITEM COLUMN BY CATEGORY.  
 1. ALL RF CABLES 2. ALL SHIELDED CABLES 3. ALL OTHERS.

SEE NOTE

REQ'D	ITEM	PART NUMBER	DESCRIPTION	SYMBOL
	45	WL 103-6	BRAID, WIRE, FLAT	
3"	44	MWC24(7)U0	WIRE, ELEC, INSULATED	
X	43	PX830-10-1	INS. SLEEVING, ELECTRICAL	
X	42	PX830-12-1	INS. SLEEVING, ELECTRICAL	
X	41	BS 100	SOLDER, SOFT	
2	40	PN122-2	PIN	
22	39	PN122-1	PIN	
X	38	TA100-1	INS TAPE, EL PLST	
#	37	M	M	
2	36	MS3420-12A	BUSHING, RUBBER	
4	35	TE120-2	TERM, LUG-SPADE	
2	34	PX830-14-1	INS SLEEVING, ELECTRICAL	
5	33	MWC22(7)U0	WIRE, ELEC, INSULATED	
1	32	JJ313-3H	CONN, PLUG, MALE - 37/C	
1	31	PL249	CONN, PLUG, MALE - 37/C	
1	30	LA107-15-P1007	SLEEVING, MARKER, CABLE	
1	29	SEE CHART		
1	28	SEE CHART		
1	27	LA107-15-RTKY-1		
1	26	LA107-15-P6501	SLEEVING, MARKER, CABLE	

○ DENOTES ITEM NO.  
 ◡ DENOTES LUG

REQ'D	ITEM	PART NUMBER	DESCRIPTION	SYMBOL
3"	25	PX100-1-438	INS SLEEVING - SIZE 7/16	
	24	PX100-1-263	INS SLEEVING - SIZE 2	
	23	MWC16(19)SJ1	CABLE, POWER, SHLD/JKT	
	22	MWC16(19)SJ0	CABLE, POWER, SHLD/JKT	
M	21	M	M	
	20	MC24(7)U3	WIRE, ELEC, INSULATION	
	19	90		
	18	98		
	17	97		
	16	96		
	15	95		
	14	94		
	13	93		
	12	92		
	11	91		
	10	0		
	9	MWC24(7)U9	WIRE, ELECT, INSULATED	
	8	MWC24(7)SJ8	CABLE, SP. SHLD/JKT	
	7	MWC24(7)SJ7		
	6	6		
	5	5		
	4	MWC24(7)SJ4	CABLE, SP. SHLD/JKT	
	3	MWC24(7)U3	WIRE, ELEC, INSULATED	
	2	2		
	1	MWC24(7)U1	WIRE, ELEC, INSULATED	

LIST OF MATERIAL

MATERIAL		THE TECHNICAL MATERIEL CORP. MAMARONECK, NEW YORK	
FINISH		TITLE CABLE ASSY. SP	
UNLESS OTHERWISE SPECIFIED DIMENSIONS ARE IN INCHES AND INCLUDE CHEMICALLY APPLIED OR PLATED FINISHES		DRAWN H. AUSTIN	DATE 2-23-65
DECIMALS .X ± .05 .XX ± .01 .XXX ± .005		CHECKED [Signature]	DATE 2-26-65
FRACTIONS ± 1/64 ANGLES ± 0° 30'		ELECT. DES. [Signature]	DATE 2-26-65
TOLERANCES		MECH. DES. [Signature]	DATE 2-26-65
THE CONTENTS OF THIS DRAWING ARE THE EXCLUSIVE PROPERTY OF THE TECHNICAL MATERIEL CORP. ITS UNAUTHORIZED USE OR REPRODUCTION IN WHOLE OR IN PART IS STRICTLY FORBIDDEN.		FINAL APPROVAL [Signature]	
NOTES		SHEET CA973	
		REV. LTR. A	